



WELCOME

to the **SR 524 Corridor Planning Study** Public Meeting



Florida Department of Transportation
District 5



This meeting, project, or study is being conducted without regard to race, color, national origin, age, sex, religion, disability or family status. Persons wishing to express their concerns relative to FDOT compliance with Title VI may do so by contacting:

Jennifer Smith

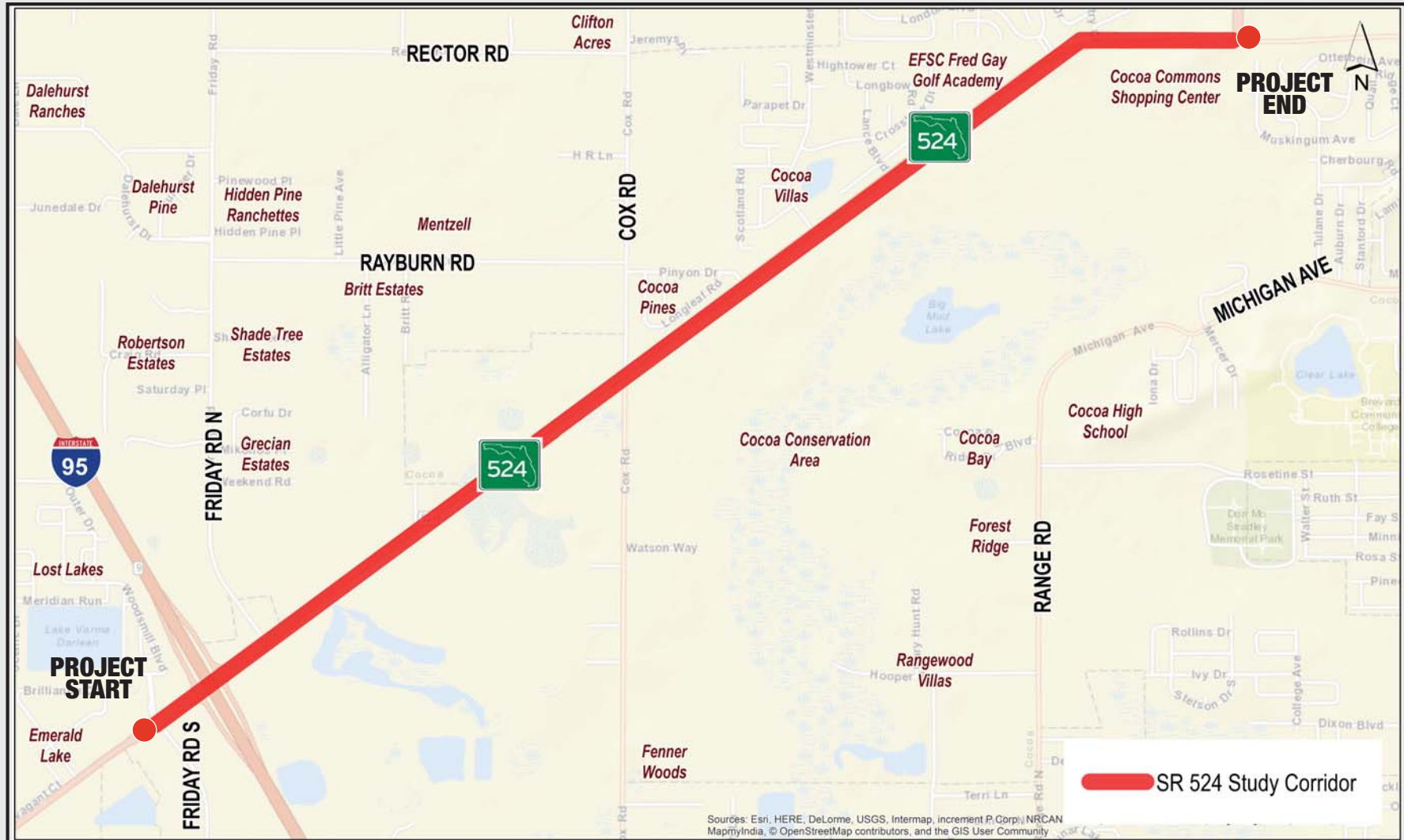
FDOT District Five Title VI Coordinator
719 South Woodland Boulevard
DeLand, Florida 32720
386-943-5367
Jennifer.Smith2@dot.state.fl.us

Jacqueline Paramore

State Title VI Coordinator
605 Suwannee Street, Mail Station 65
Tallahassee, FL 32399-0450
850-414-4753
Jacqueline.Paramore@dot.state.fl.us

All inquiries or complaints will be handled according to FDOT procedure and in a prompt and courteous manner.

Project Study Area



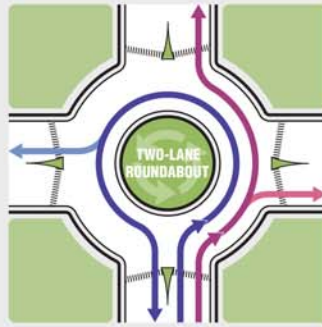
Sources: Esri, HERE, DeLorme, USGS, Intermap, increment P Corp., NRCAN, MapmyIndia, © OpenStreetMap contributors, and the GIS User Community



Development within Project Study Area



Roundabout Examples and Benefits



Typical 2-Lane Roundabout Configuration

Benefits of a Roundabout

- **Saves Lives**
 - Up to a 90% reduction in fatal crashes and 75% fewer injuries
 - 30-40% fewer pedestrian/bicycle crashes
- **Efficient Traffic Flow**
 - 30 to 50% increase in traffic capacity
 - Less delay than waiting at stops and signals
- **Environmentally Friendly**
 - Reduces pollution (from cars not waiting at traffic signals)
 - Roundabout islands can be landscaped with native plants and trees
- **Can Save Money**
 - No traffic signals to install and maintain
 - Intersection still operates in power outages, no need for police to direct traffic
- **Community Benefits**
 - Traffic calming
 - Aesthetic landscaping

SR 60 at Coronado Drive, Mandalay Avenue, and Poinsettia Avenue Clearwater, FL



SR 44 at Grand Avenue Volusia County, FL



Main Street at Winchester Street Keene, NH



SR A1A at SR 108 Fernandina Beach, FL



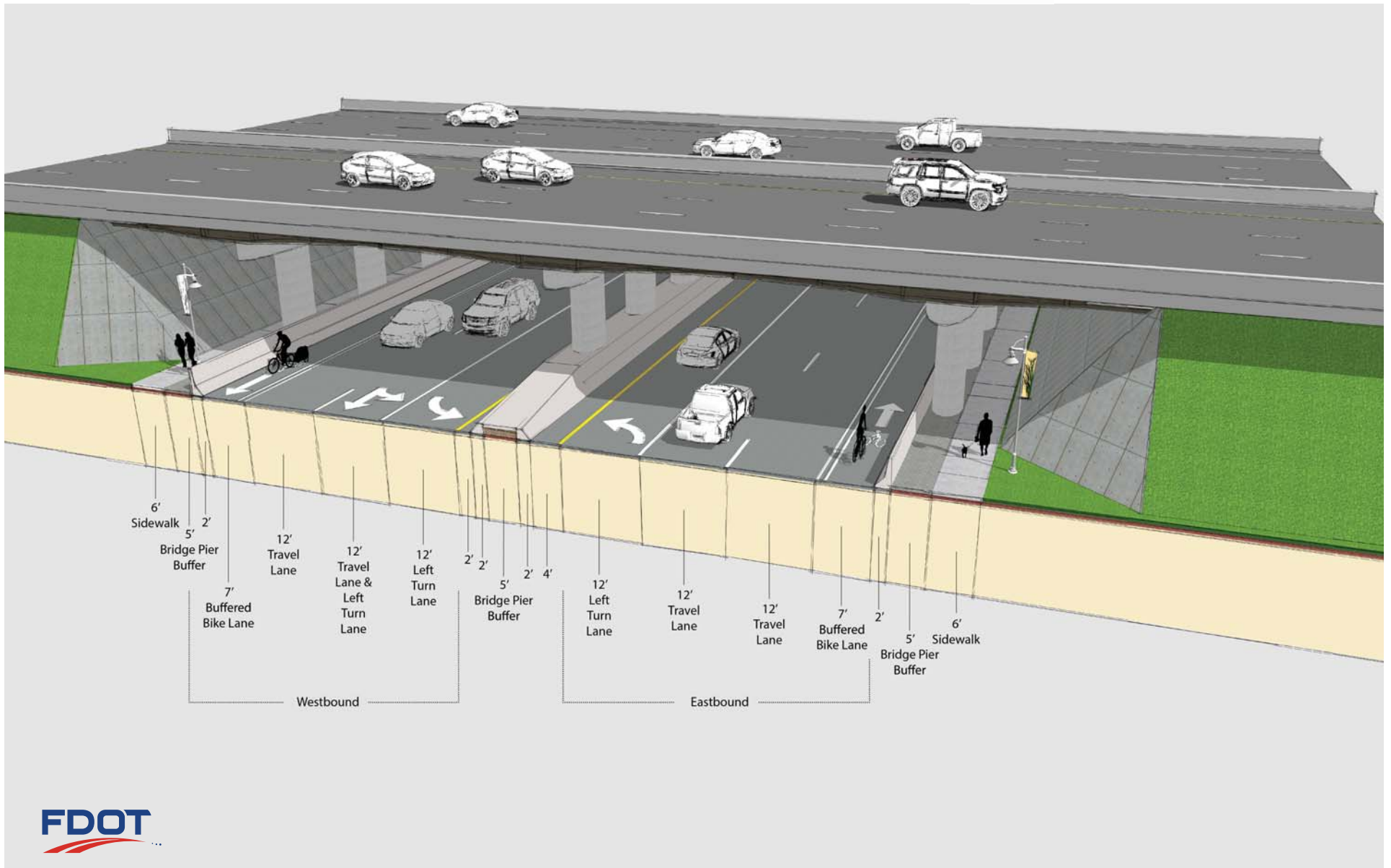
Korean Veterans Boulevard, Nashville, TN



SR A1A at SR 732 Jensen Beach, FL



Proposed Typical Section I-95 Interchange



Proposed Typical Section

Coventry Court to west of Industry Road



Proposed Typical Section

Cox Road to Coventry Court



Proposed Typical Section

Friday Road North to Cox Road



Proposed Typical Section

London Boulevard Intersection

