



## Title VI

The Florida Department of Transportation complies with various nondiscrimination laws and regulations, including Title VI of the Civil Rights Act of 1964 and the Americans with Disabilities Act (ADA).

Public participation is solicited without regard to race, color, national origin, age, sex, religion, disability or family status. Persons wishing to express their concerns relative to FDOT compliance with Title VI may do so by contacting either:

### District 5 Office

#### Florida Department of Transportation

Jennifer Smith  
District 5 Title VI Coordinator  
719 South Woodland Boulevard  
DeLand, FL 32720  
(386) 943-5367  
Jennifer.Smith2@dot.state.fl.us

### Central Office

#### Florida Department of Transportation

Jacqueline Paramore  
State Title VI Coordinator  
605 Suwannee Street, MS 65  
Tallahassee, FL 32399-0450  
(850) 414-4753  
Jacqueline.Paramore@dot.state.fl.us



### Why Are You Here?

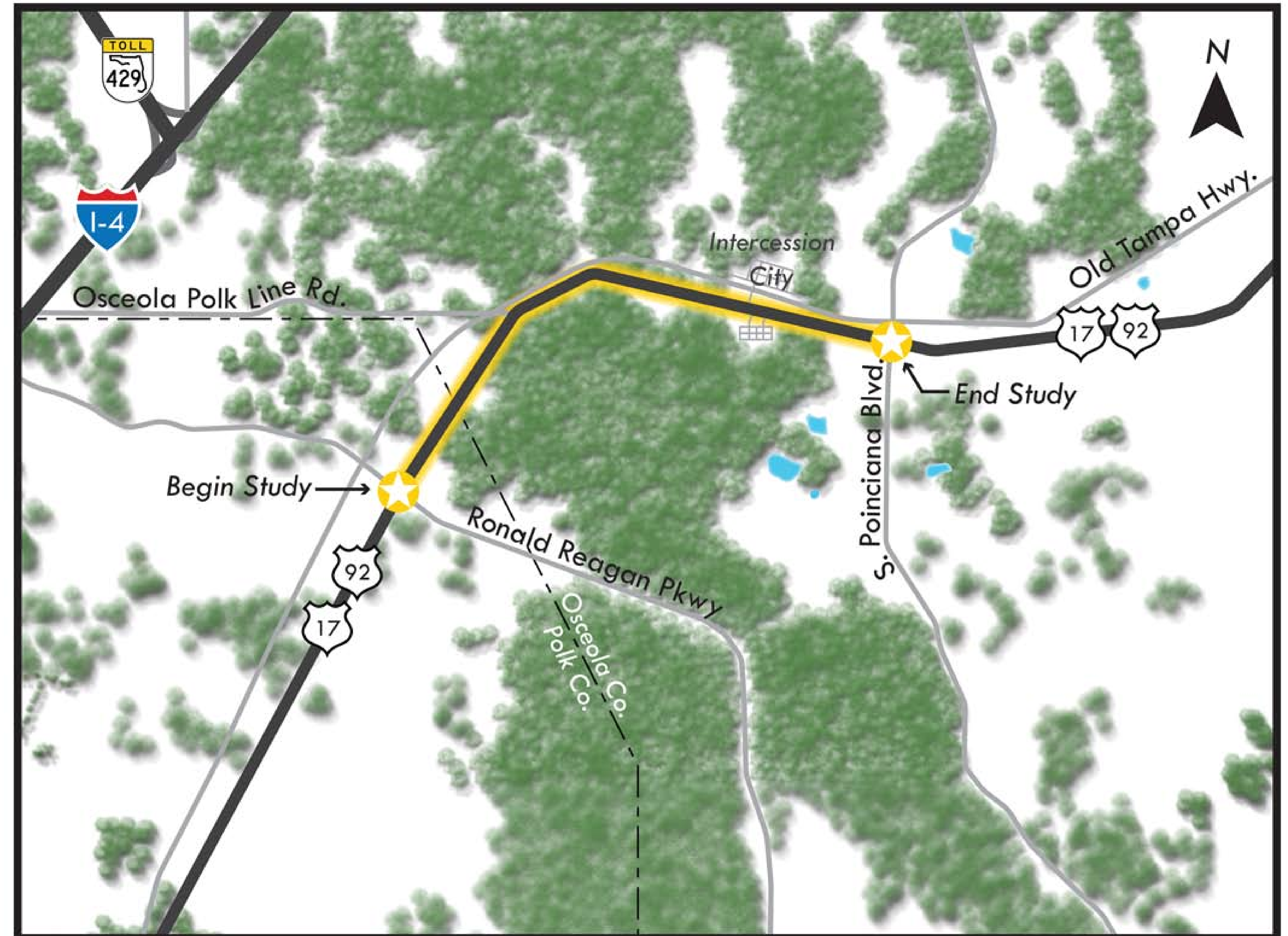
- 1) To participate in the Corridor Planning Study process
- 2) To review the future build alternatives along U.S. 17/92
- 3) To provide your thoughts, concerns, and comments regarding the project

**WE WANT YOUR FEEDBACK!**

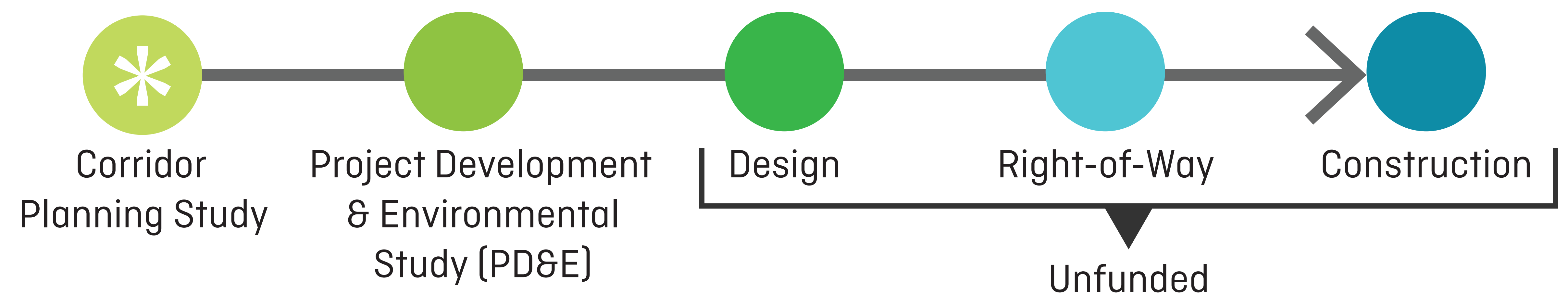
### How Can You Get Involved?

- Participate in open discussion with the project team
- Ask questions about specific aspects of the project
- Fill out a comment form with your input
- Visit the project website at [www.cflroads.com](http://www.cflroads.com) and search by FM number: **FM# 437200**

## Project Location

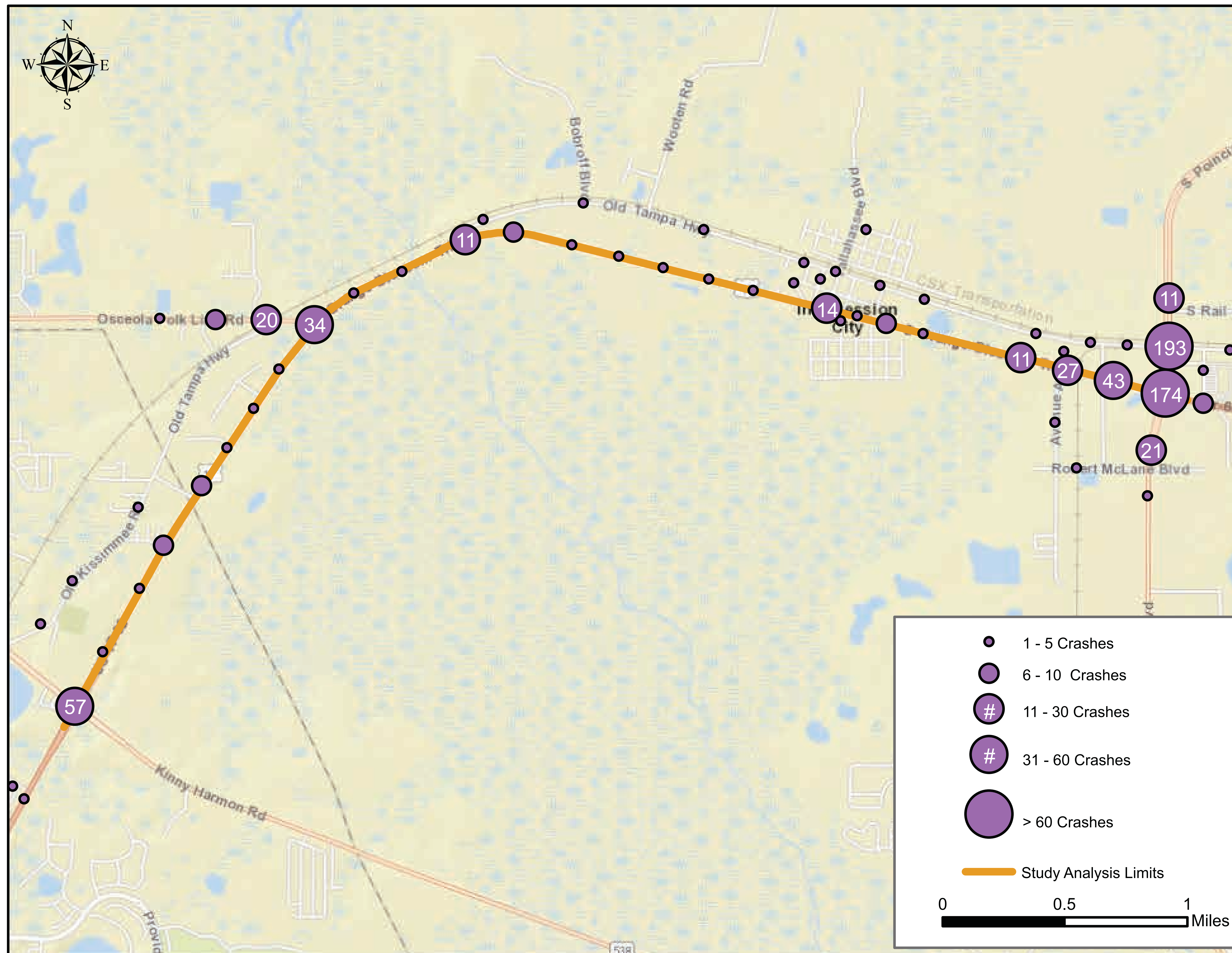


### Where Are We Now?



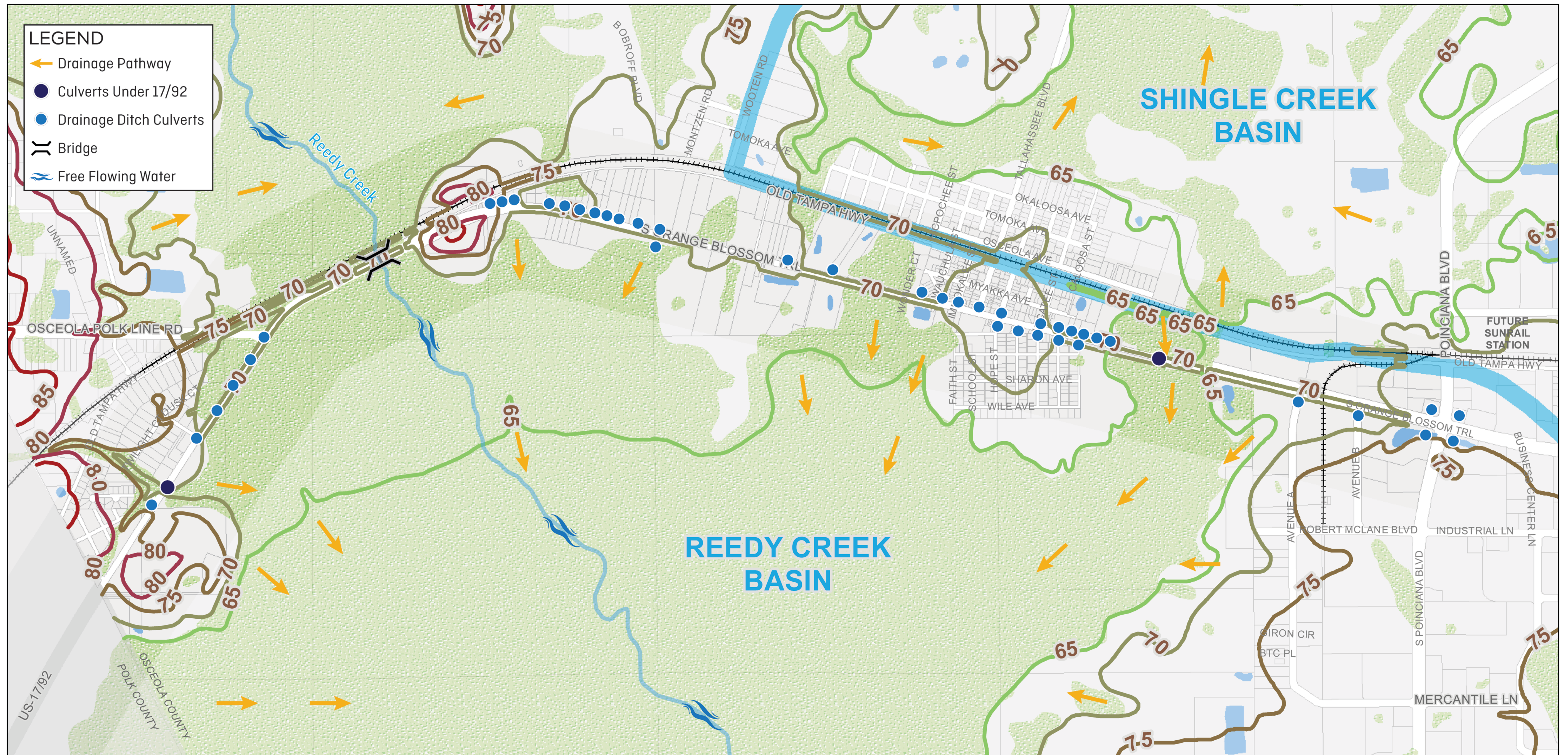


### Crash Data





## Drainage Basin and Culverts



0 0.125 0.25 0.5  
Miles

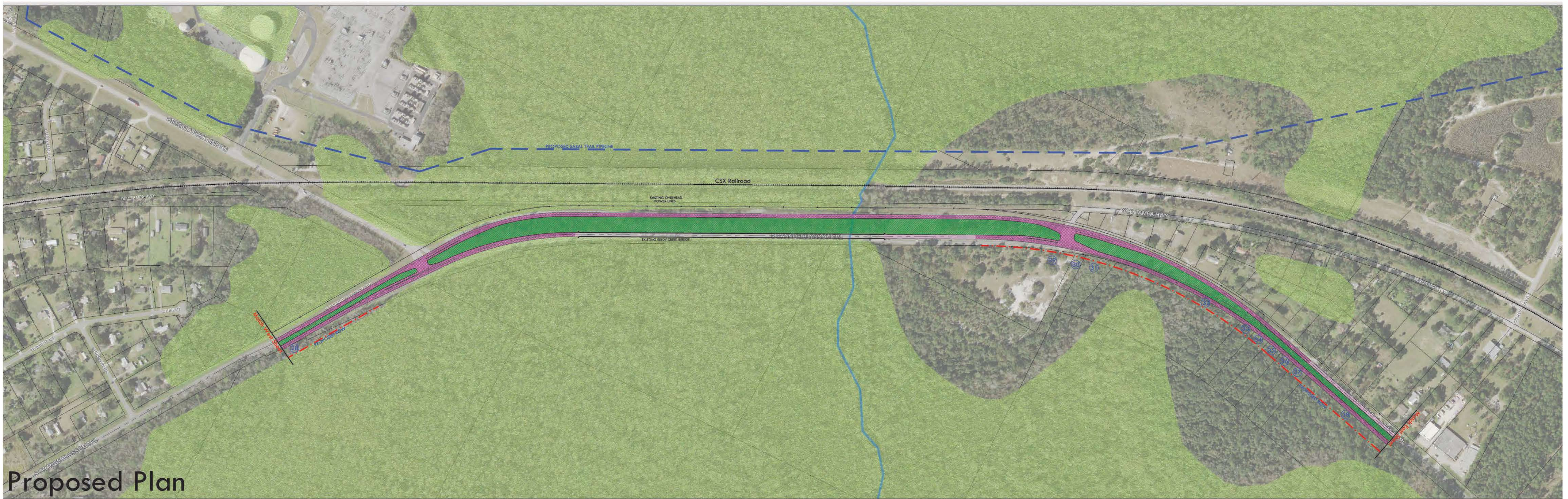
5 foot Contours — 65 — 70 — 75 — 80 — 85 — Drainage Basin Boundary



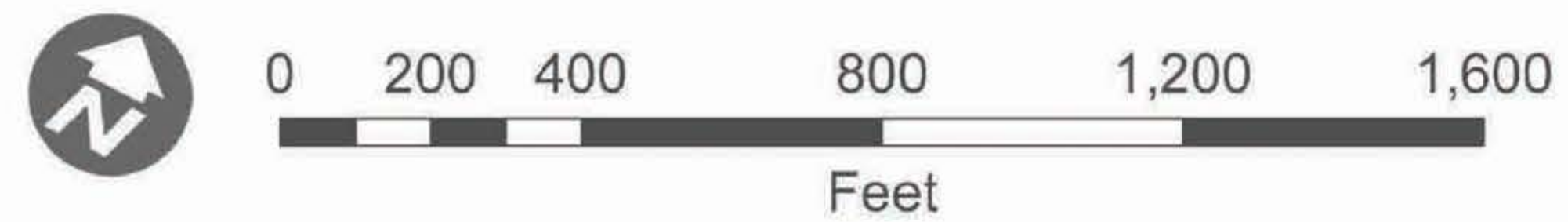
# US 17/92 CORRIDOR PLANNING STUDY FM# 437200

## Preliminary Roadway Alignment Option- Middle Segment

Background



Proposed Plan



- Proposed Pipeline
- Proposed ROW
- Apparent ROW
- Existing Bridge
- Existing Overhead Powerlines
- Centerline
- New Construction
- Existing Roadway
- Median
- Wetlands

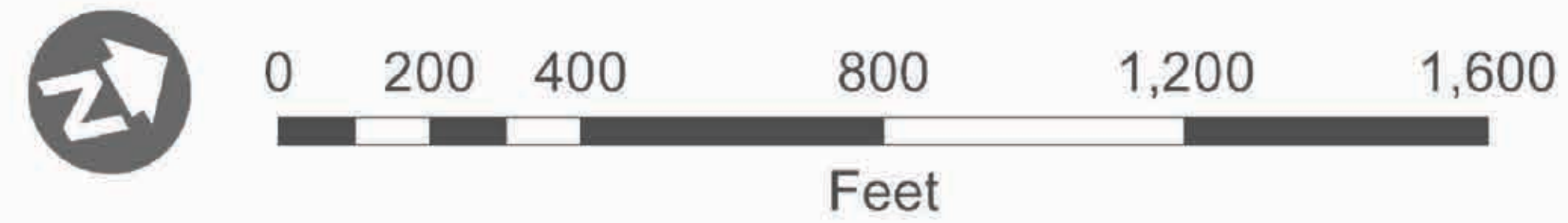


## Preliminary Roadway Alignment Option- West Segment

Background



Proposed Plan



- |                   |                              |                  |
|-------------------|------------------------------|------------------|
| Proposed Pipeline | Existing Bridge              | New Construction |
| Proposed ROW      | Existing Overhead Powerlines | Existing Roadway |
| Apparent ROW      | Centerline                   | Median           |
|                   |                              | Wetlands         |



Background



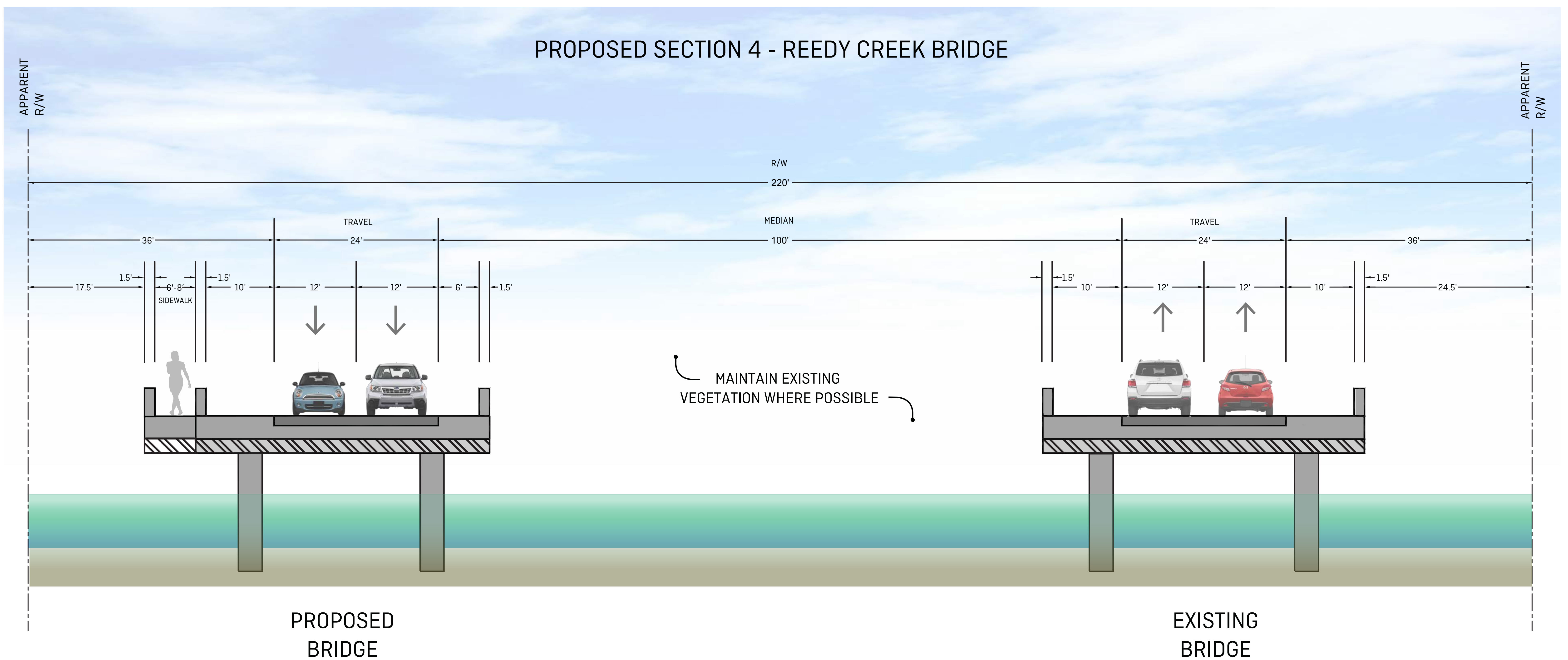
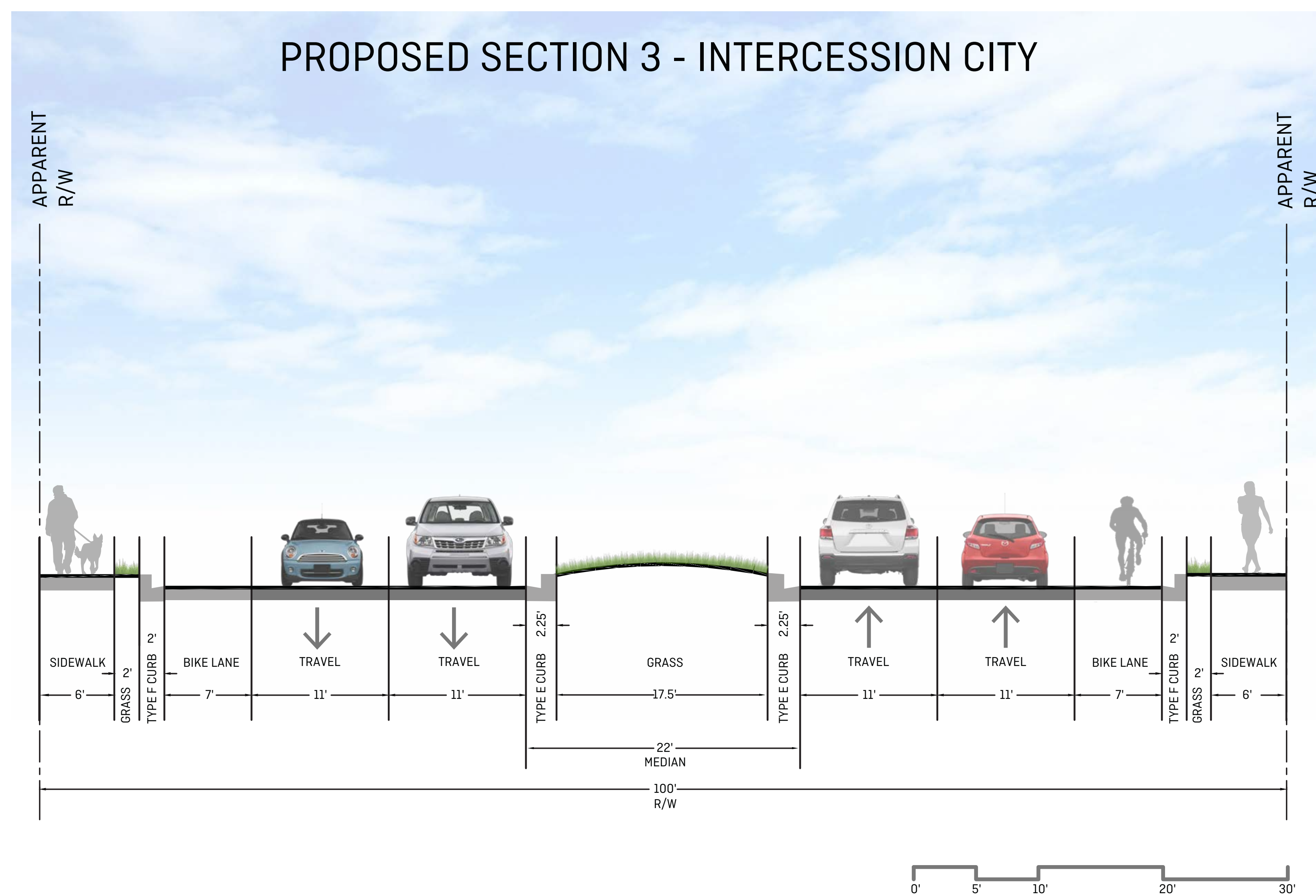
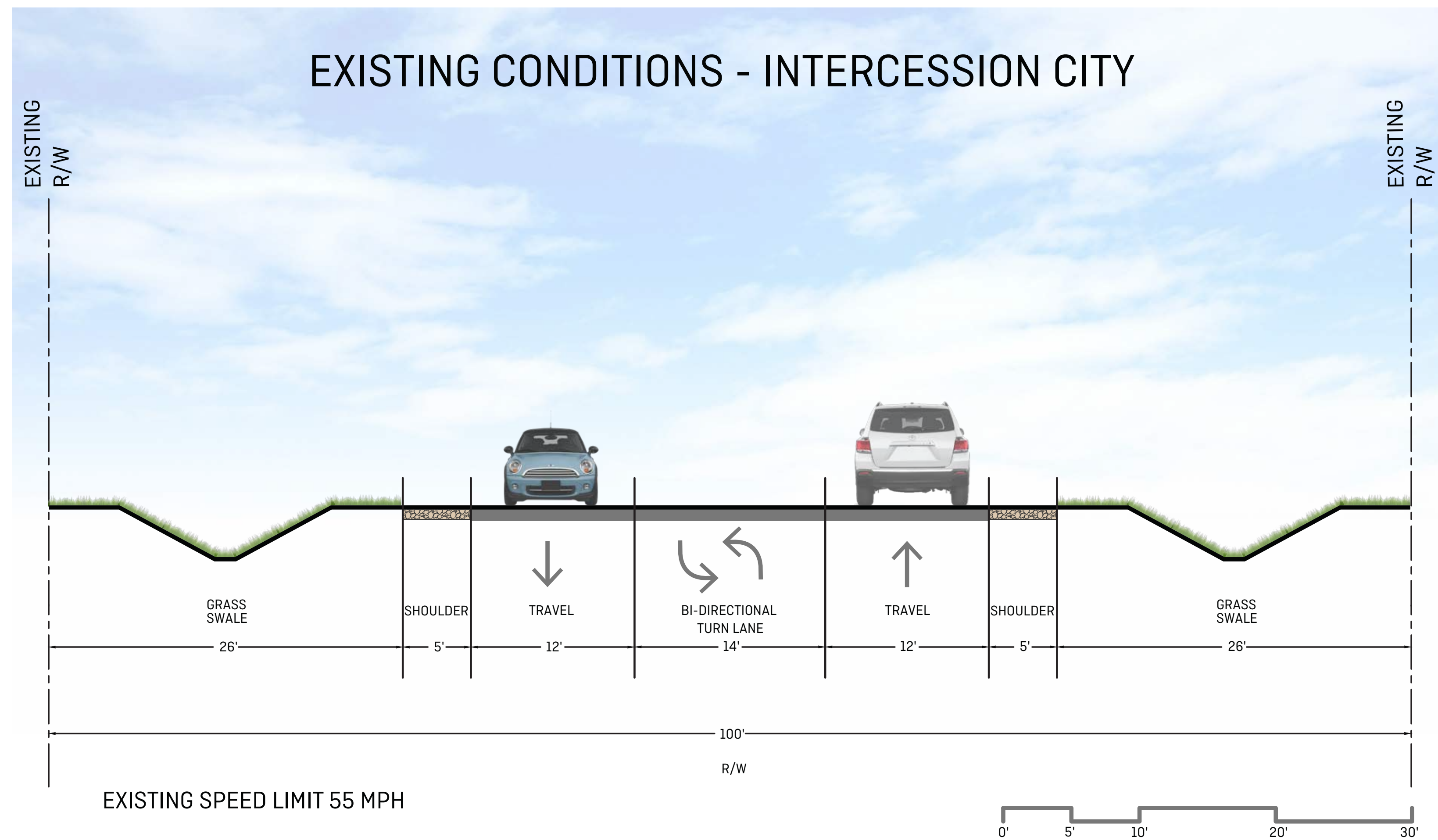
Proposed Plan



- Proposed Pipeline
- Proposed ROW
- Existing Bridge
- Existing Overhead Powerlines
- New Construction
- Existing Roadway
- Apparent ROW
- Centerline
- Median
- Wetlands



## FROM RONALD REAGAN PARKWAY TO POINCIANA BOULEVARD

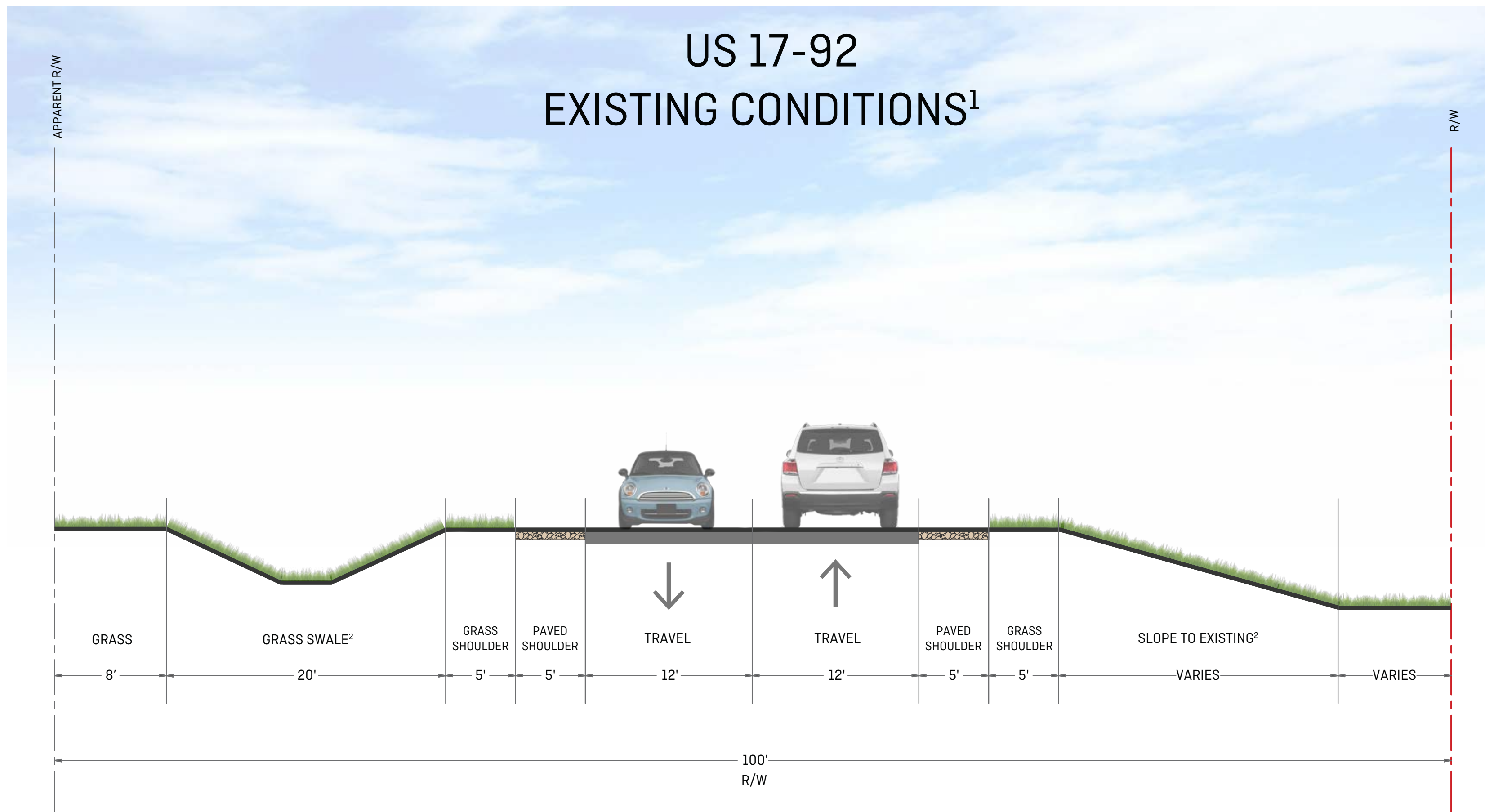


NOTE: Sidewalk, trail and/or bike lanes to be further evaluated





## FROM RONALD REAGAN PARKWAY TO POINCIANA BOULEVARD



EXISTING SPEED LIMIT 55 MPH

<sup>1</sup>GENERALLY TYPICAL FOR CORRIDOR EXCEPT REEDY CREEK BRIDGE (SEE SECTION 4) AND BETWEEN INTERCESSION CITY AND AVENUE 'A' WHERE RIGHT OF WAY WIDENS TO 200 FEET.

<sup>2</sup>ONE OR BOTH OF THESE EDGE CONDITIONS MAY BE PRESENT ALONG THE SAME SIDE OF THE ROADWAY AT DIFFERENT LOCATIONS ON THE CORRIDOR.

