

PROJECT KICKOFF NEWSLETTER  
**U.S. 17-92 Project Development  
and Environment (PD&E) Study**



From Ivy Mist Lane to Avenue A

**OSCEOLA COUNTY | Financial Project Identification (FPID) No.: 437200-1**

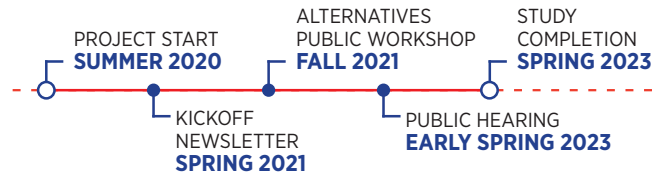
**WHAT IS A PD&E STUDY?**

A PD&E study is a blending of engineering, environmental assessments and public involvement activities. The process is used by engineers and planners to develop transportation improvements incorporating community and agency input, minimizing impacts to the natural and social environment and providing viable engineering and transportation solutions.

During this PD&E study phase, feasible alternatives will be developed based on the findings and recommendations of the corridor planning study completed in 2018. These alternatives, also known as “Build” alternatives, are evaluated based on environmental, engineering and socioeconomic conditions, safety needs and public input. The need for additional right of way for stormwater and environmental mitigation will be evaluated during the PD&E study phase. The no-build alternative is considered to be a viable alternative and will remain so for the duration of the PD&E study phase.

Public engagement activities are planned throughout the duration of the project, including newsletters, an alternatives public workshop, and a public hearing. This newsletter is one of the first steps to introduce the study, describe the study process, provide contact information and establish communication with members of the public, agency staff, elected officials and other interested stakeholders.

Below is a tentative schedule of public engagement activities. We strongly encourage public participation and welcome your comments and questions.



Public participation is solicited without regard to race, color, national origin, age, sex, religion, disability or family status. Persons wishing to express their concerns relative to FDOT compliance with Title VI may do so by contacting Jennifer Smith, FDOT District Five Title VI Coordinator via email at Jennifer.Smith2@dot.state.fl.us.

The environmental review, consultation, and other actions required by applicable federal environmental laws for this project are being, or have been, carried on by FDOT pursuant to 23 U.S.C. §327 and a Memorandum of Understanding dated December, 14, 2016, and executed by the Federal Highway Administration and FDOT.

Name/Title  
Address Line 1  
Address Line 2  
City, State Zip

DISTRICT FIVE - MS-A1-C15  
719 SOUTH WOODLAND BOULEVARD  
DELAND, FLORIDA 32720

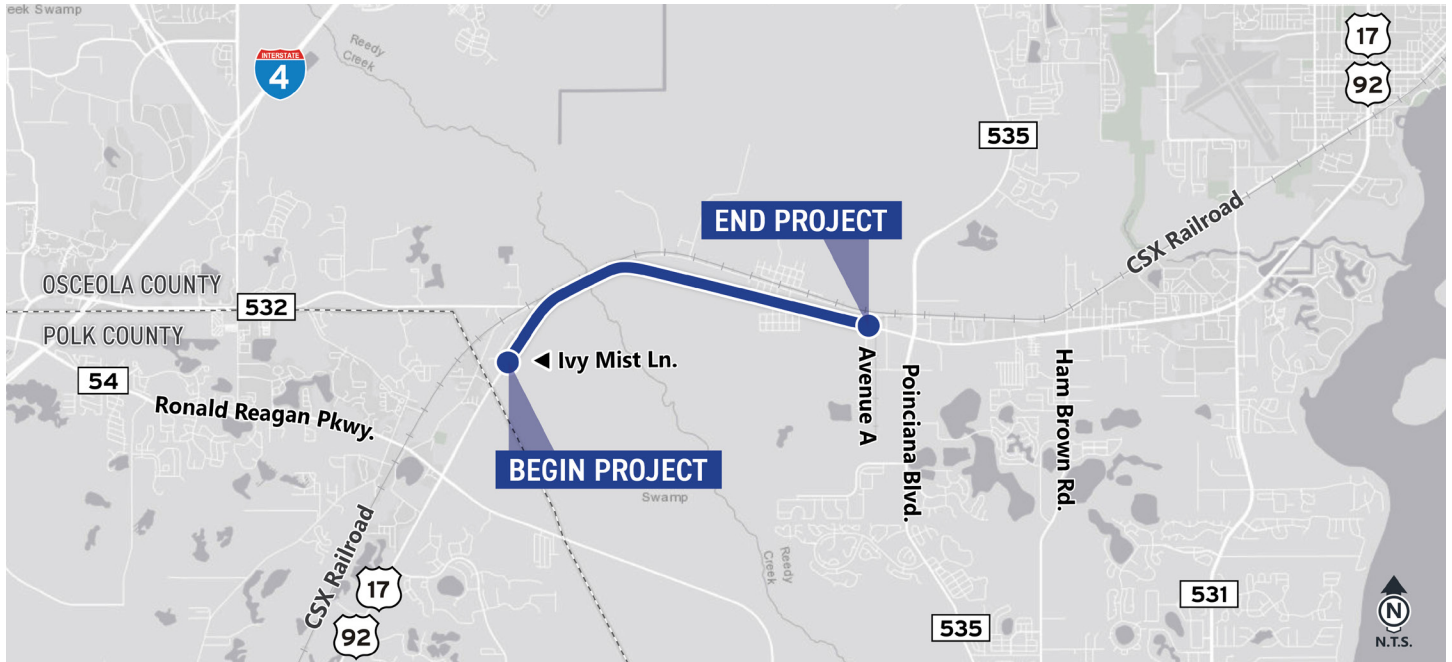


POSTAGE

# U.S. 17-92 Project Development and Environment (PD&E) Study

From Ivy Mist Lane to Avenue A

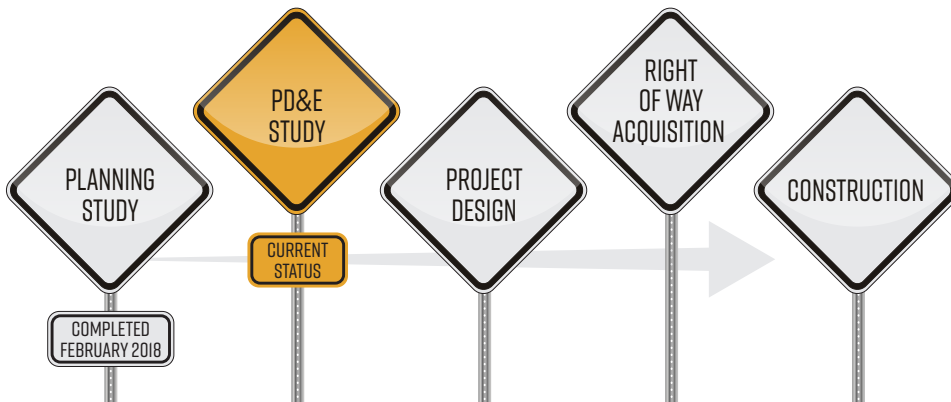
OSCEOLA COUNTY | Financial Project Identification (FPID) No.: 437200-1



The Florida Department of Transportation (FDOT) is conducting a Project Development and Environment (PD&E) study for U.S. 17-92, evaluating alternatives to widen the existing two-lane roadway to four lanes and the evaluation of accommodating four lanes across Reedy Creek. The study's limits begin at Ivy Mist Lane and ends at Avenue A in Osceola County, just west of Poinciana Boulevard. The project is approximately 3.8 miles long and extends through Poinciana and Intercession City. The purpose of this project is to address current and future travel demand, improve safety and provide system linkage for this regionally significant arterial roadway.

A project location map shown above depicts the study limits.

This PD&E study is the second phase of FDOT's five step project life cycle. The first phase, the corridor planning study, was completed in February 2018. During the corridor planning study, FDOT analyzed existing and future safety, traffic and other community needs in coordination with local and regional agency partners and stakeholders. The findings and recommendations from the corridor planning study will be evaluated and refined during this PD&E study with continued coordination with local partners, stakeholders and the public in accordance with National Environmental Policy Act (NEPA).



Please visit [CFLRoads.com/437200-1](https://CFLRoads.com/437200-1) to access the project webpage, or visit CFLRoads.com, click the magnifying glass, and search 437200-1. The project webpage will be updated as information becomes available. We invite you to check back regularly.



**CONTACT**  
 FDOT Project Manager  
 Lorena Cucek, FCCM, CPM  
 386-943-5392  
 Lorena.cucek@dot.state.fl.us

