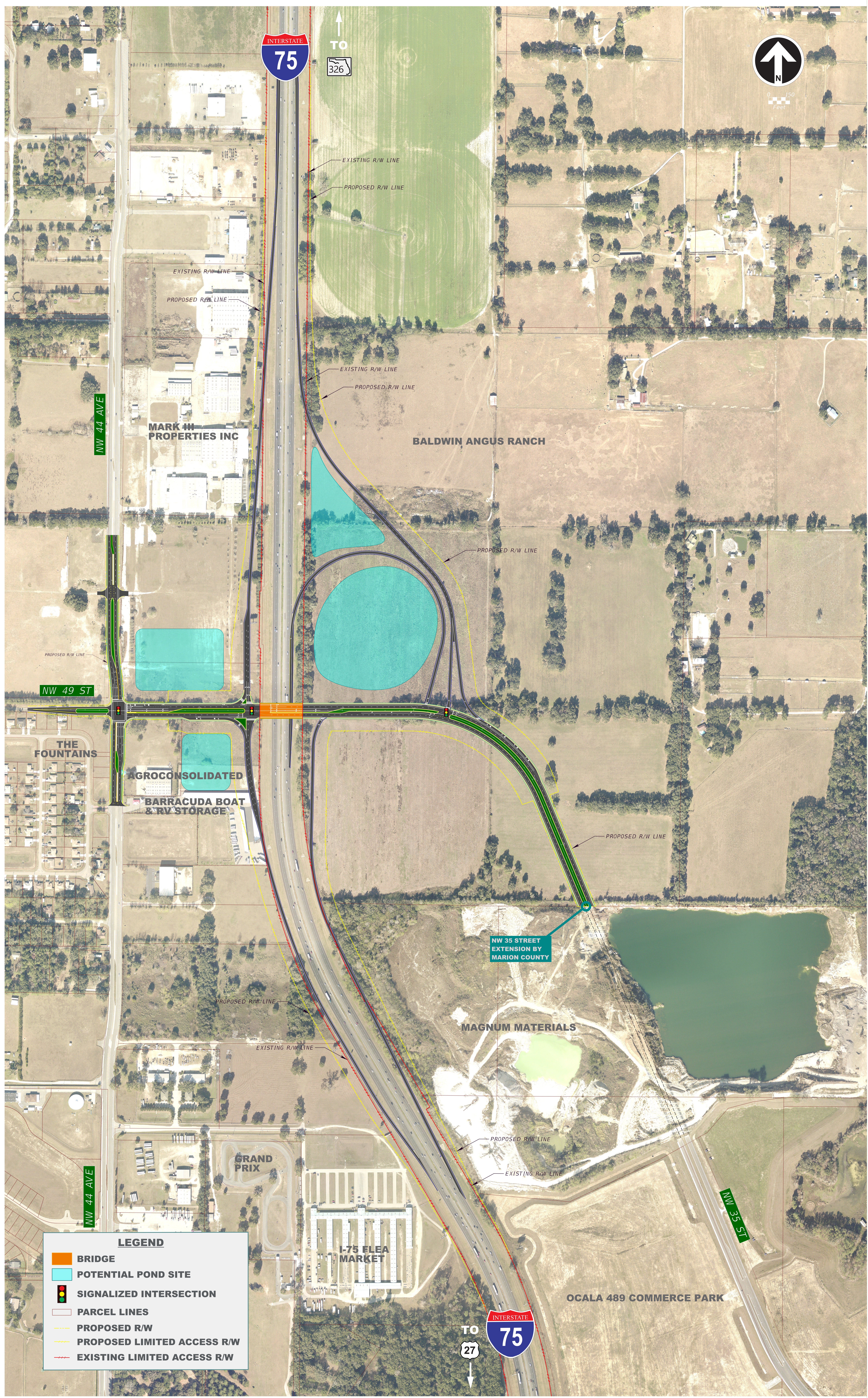


I-75 (S.R. 93) at NW 49th Street PD&E Study - Partial Cloverleaf North East Interchange Alternative



LEGEND

- BRIDGE
- POTENTIAL POND SITE
- SIGNALIZED INTERSECTION
- PARCEL LINES
- PROPOSED R/W
- PROPOSED LIMITED ACCESS R/W
- EXISTING LIMITED ACCESS R/W