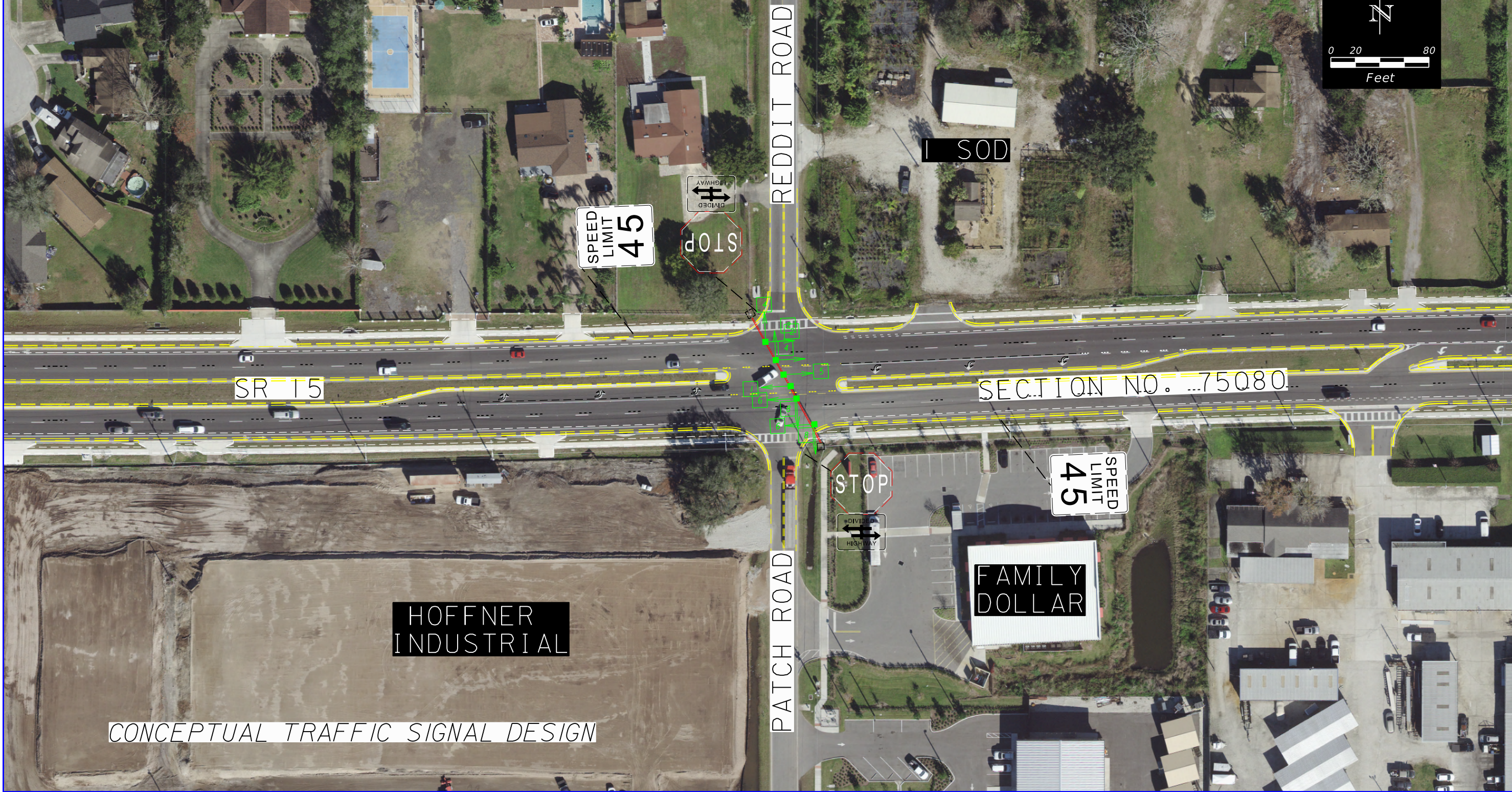
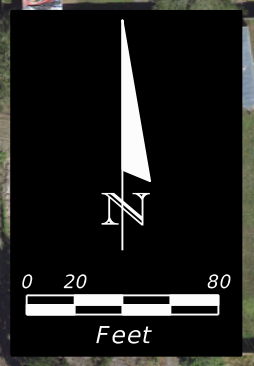


- IMPROVEMENTS:
1. INSTALL TRAFFIC SIGNAL
 2. REMOVE THE STOP AND DIVIDED HIGHWAY SIGNS
 3. INSTALL STOP LINE ON EASTBOUND AND WESTBOUND APPROACHES
 4. REMOVE CONFLICTING PAVEMENT MARKINGS



REVISIONS				STATE OF FLORIDA DEPARTMENT OF TRANSPORTATION			IMPROVEMENT DIAGRAM	SHEET NO.
DATE	DESCRIPTION	DATE	DESCRIPTION	ROAD NO.	COUNTY	SECTION NO.		
				15	ORANGE	75080		