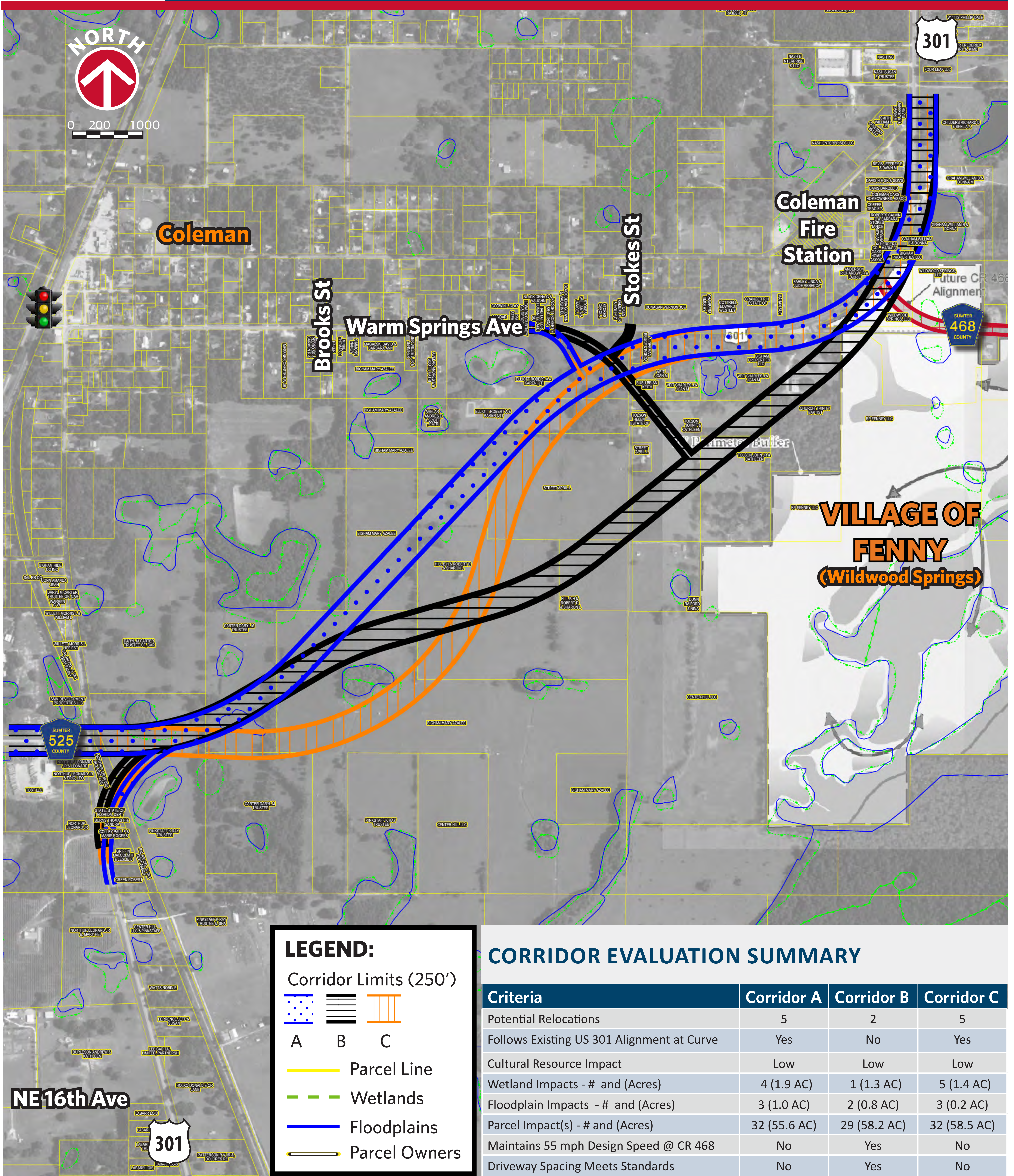




US 301 PD&E

From CR 470 E to SR 44 in Sumter County
Potential Truck Routes



Coleman Fire Station

VILLAGE OF FENNY (Wildwood Springs)

LEGEND:

Corridor Limits (250')

A B C

Parcel Line
Wetlands
Floodplains
Parcel Owners

CORRIDOR EVALUATION SUMMARY

Criteria	Corridor A	Corridor B	Corridor C
Potential Relocations	5	2	5
Follows Existing US 301 Alignment at Curve	Yes	No	Yes
Cultural Resource Impact	Low	Low	Low
Wetland Impacts - # and (Acres)	4 (1.9 AC)	1 (1.3 AC)	5 (1.4 AC)
Floodplain Impacts - # and (Acres)	3 (1.0 AC)	2 (0.8 AC)	3 (0.2 AC)
Parcel Impact(s) - # and (Acres)	32 (55.6 AC)	29 (58.2 AC)	32 (58.5 AC)
Maintains 55 mph Design Speed @ CR 468	No	Yes	No
Driveway Spacing Meets Standards	No	Yes	No

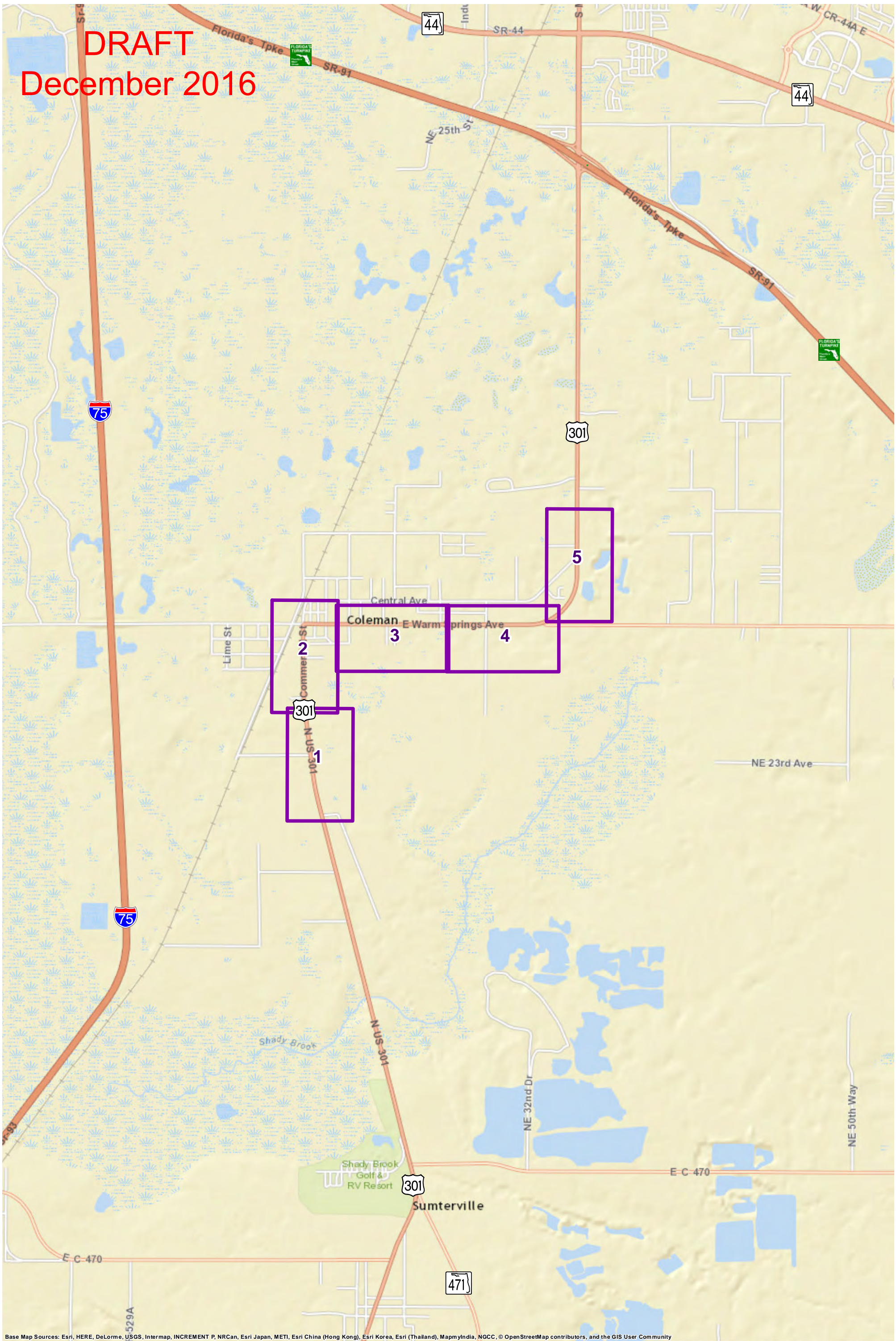
NE 16th Ave



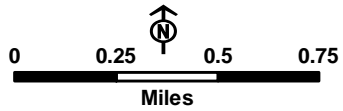
DRAFT
December 2016

Best-Fit Alignment – Widening Alternative

DRAFT
December 2016

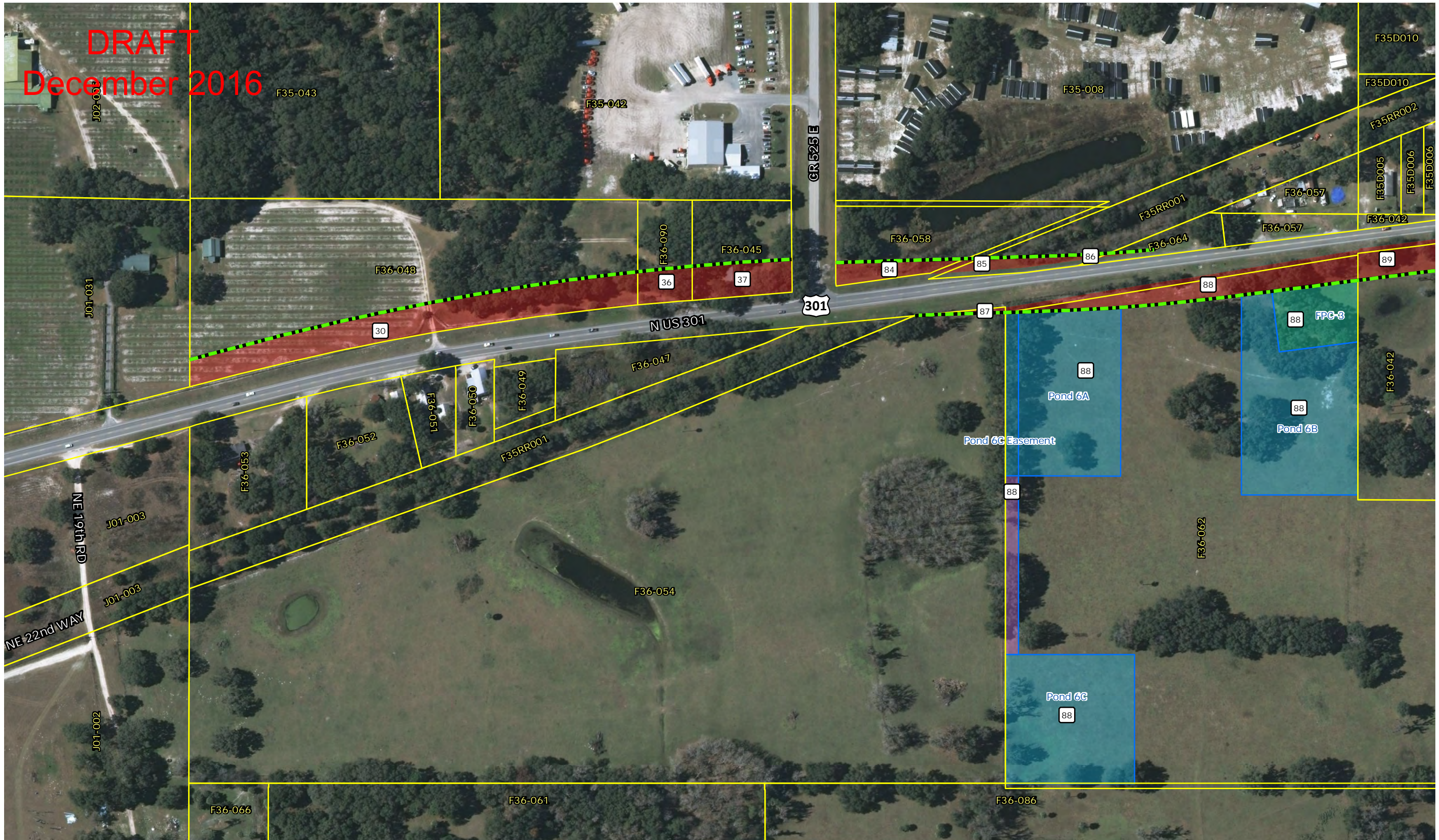


Base Map Sources: Esri, HERE, DeLorme, USGS, Intermap, INCREMENT P, NRCan, Esri Japan, METI, Esri China (Hong Kong), Esri Korea, Esri (Thailand), MapmyIndia, NGCC, © OpenStreetMap contributors, and the GIS User Community

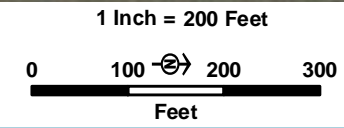


US 301 PD&E Study
Potentially Impacted Parcels - Through-Coleman Best Fit
Map Sheet Overview

DRAFT
December 2016

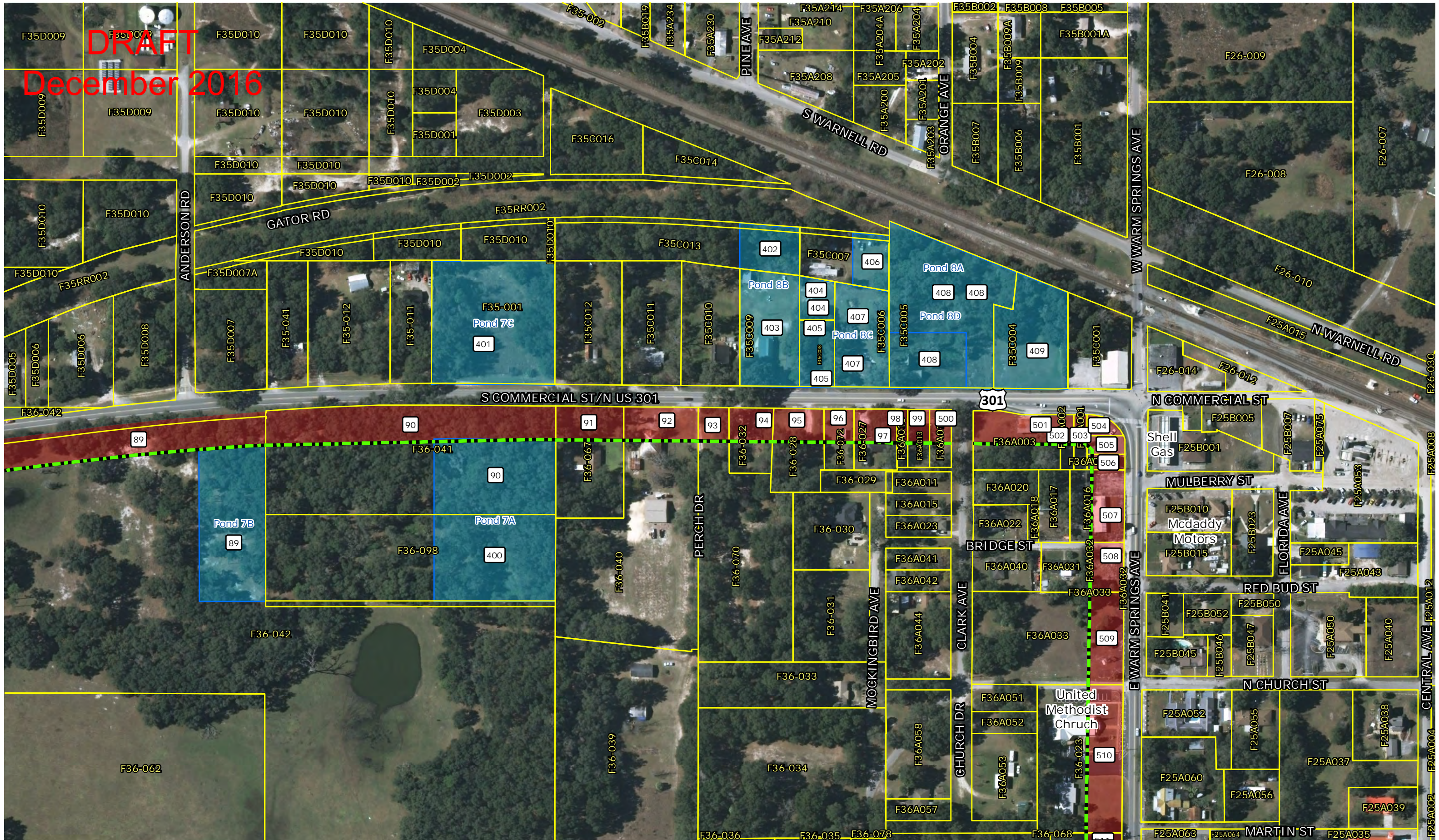


- R/W
- Pond Easement
- Proposed R/W Line
- 6 Impacted Parcel ID
- Pond
- Retention Area
- Parcels & PIN

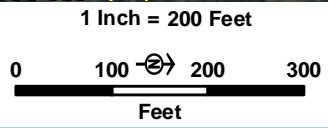


US 301 PD&E Study
Potentially Impacted Parcels - Through-Coleman Best Fit
Map Sheet 1 of 5

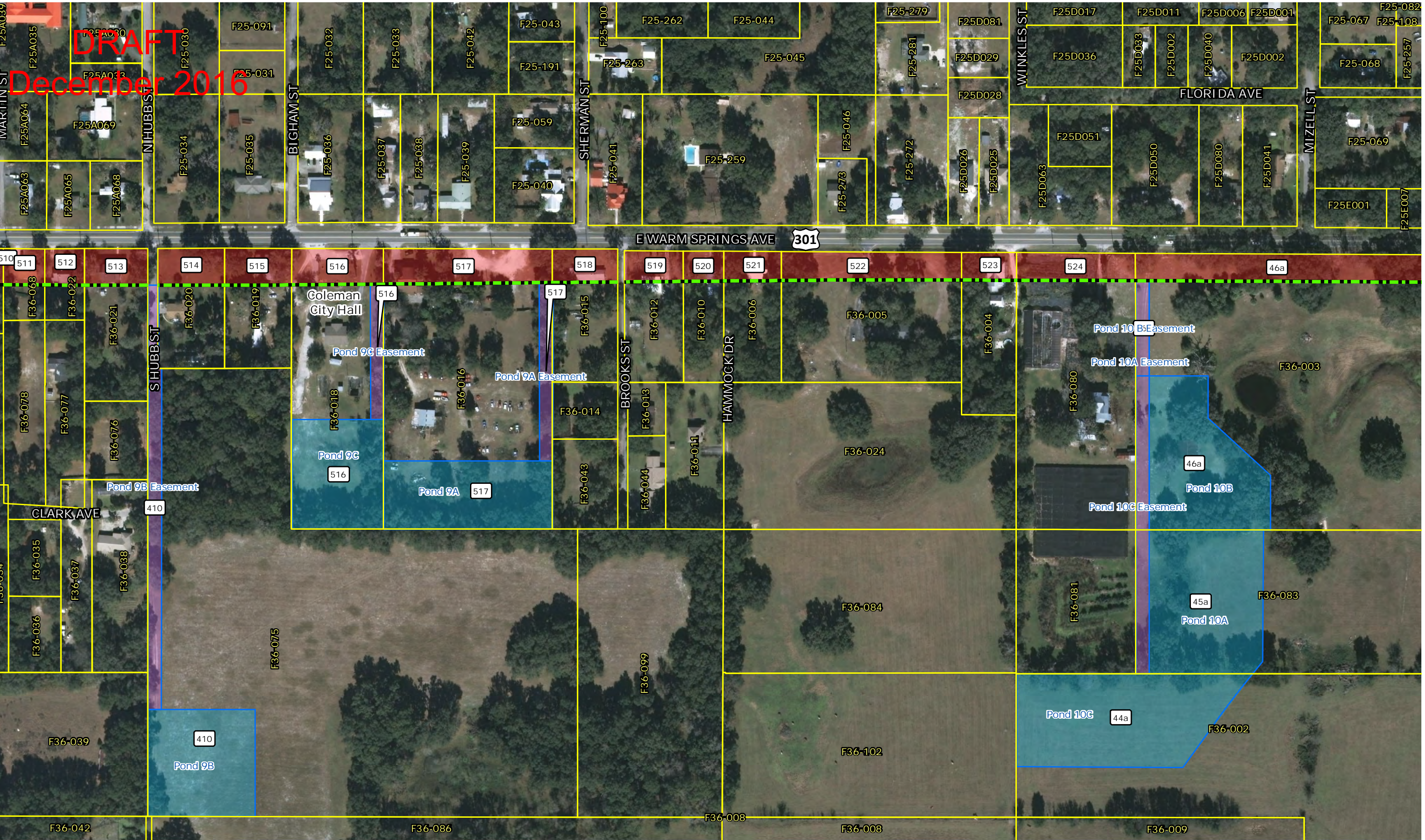
DRAFT
December 2016



- R/W
- Pond Easement
- Proposed R/W Line
- 6 Impacted Parcel ID
- Pond
- Retention Area
- F35D009 Parcels & PIN



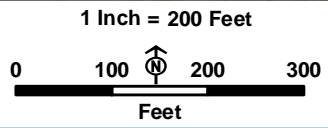
US 301 PD&E Study
Potentially Impacted Parcels - Through-Coleman Best Fit
Map Sheet **2** of 5



DRAFT
December 2016

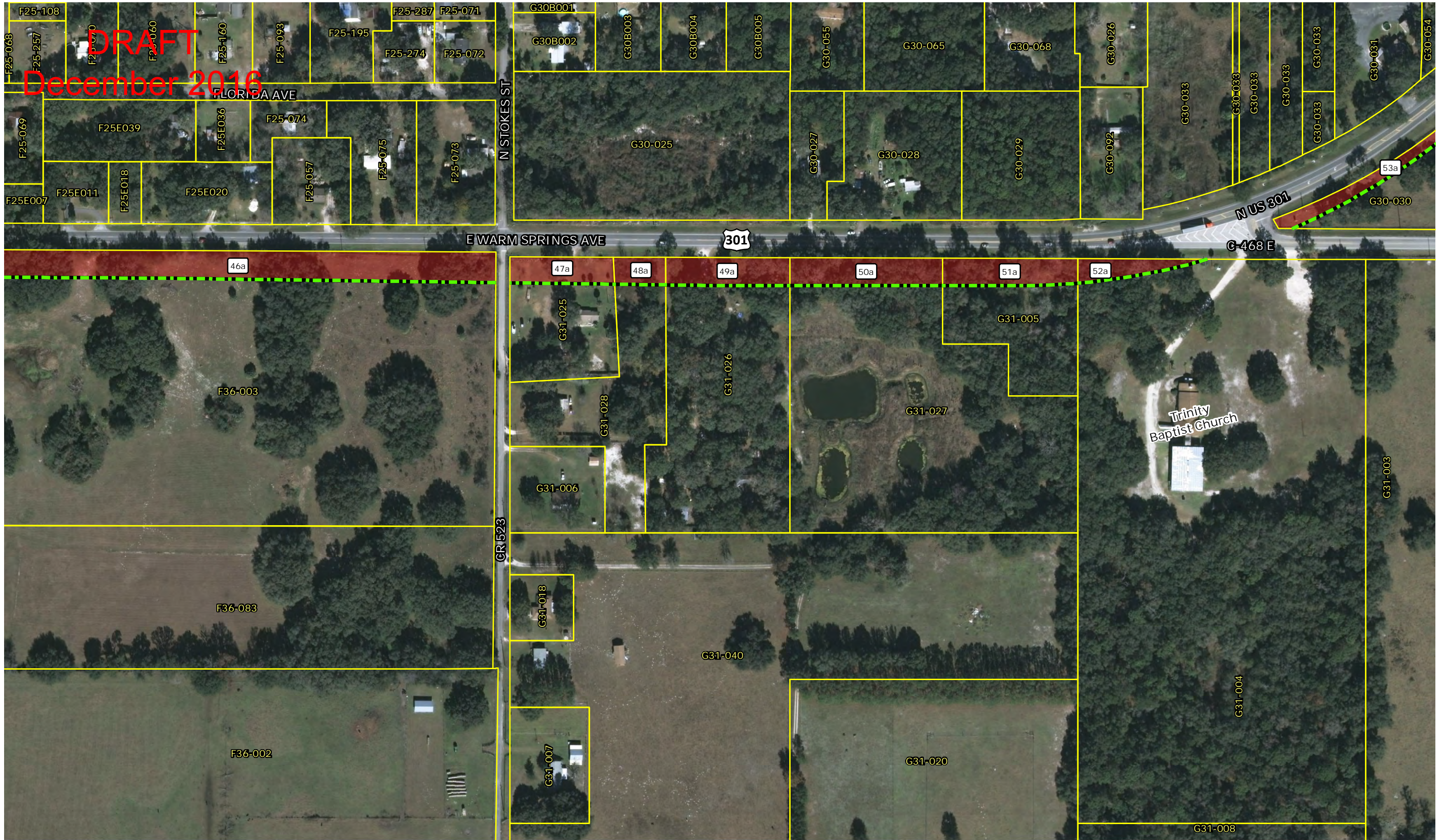


- R/W
- Pond Easement
- Proposed R/W Line
- Impacted Parcel ID
- Pond
- Retention Area
- Parcels & PIN

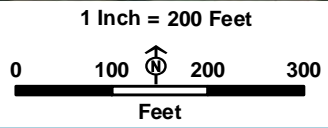


US 301 PD&E Study
Potentially Impacted Parcels - Through-Coleman Best Fit
Map Sheet **3** of 5

DRAFT
December 2016



- R/W
- Pond Easement
- Proposed R/W Line
- Impacted Parcel ID
- Pond
- Retention Area
- Parcels & PIN

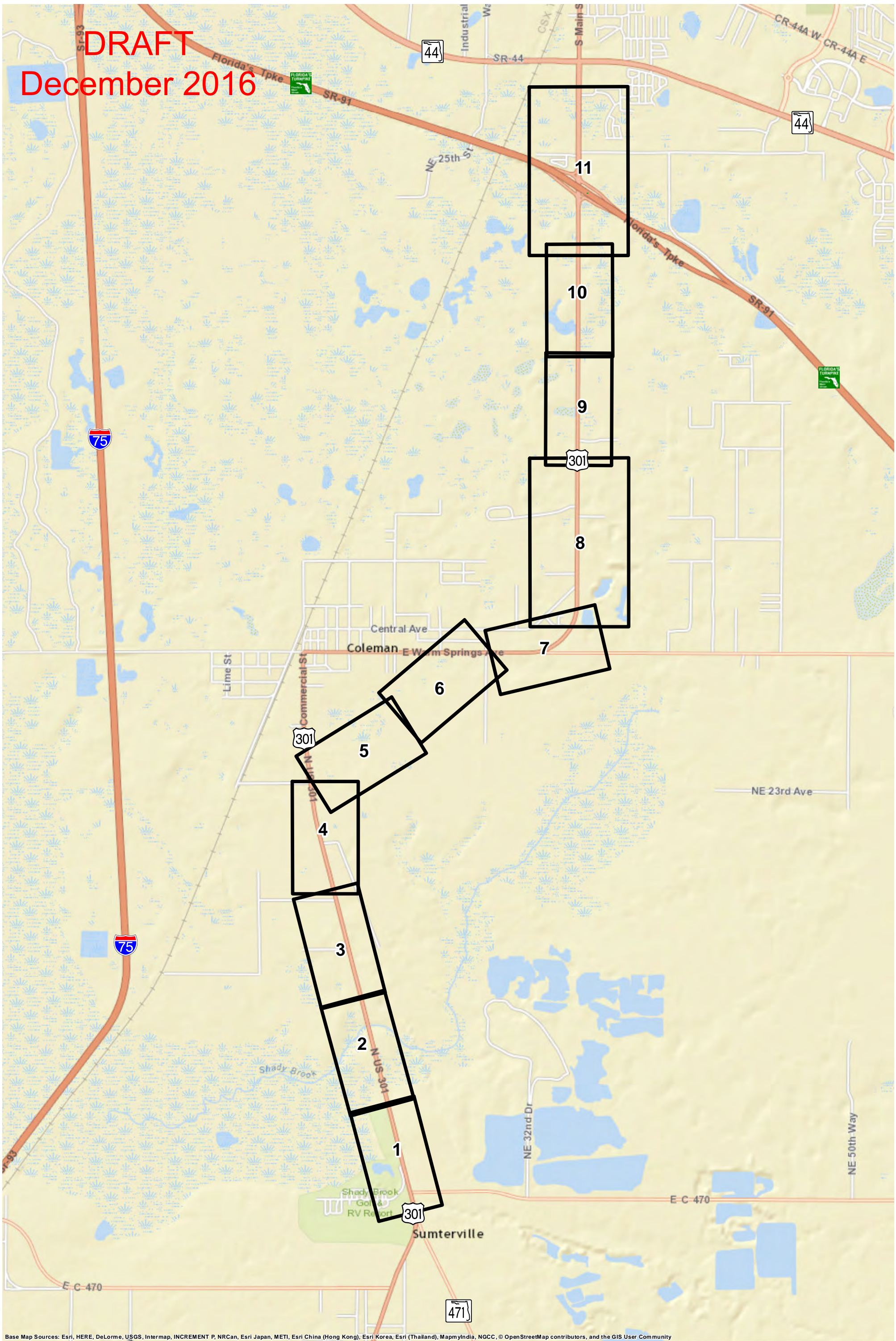


US 301 PD&E Study
Potentially Impacted Parcels - Through-Coleman Best Fit
Map Sheet **4** of 5

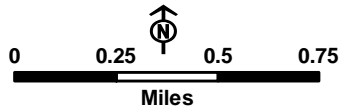
DRAFT
December 2016

Best-Fit Alignment – Truck Route Alternative

DRAFT
December 2016



Base Map Sources: Esri, HERE, DeLorme, USGS, Intermap, INCREMENT P, NRCan, Esri Japan, METI, Esri China (Hong Kong), Esri Korea, Esri (Thailand), MapmyIndia, NGCC, © OpenStreetMap contributors, and the GIS User Community

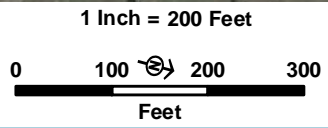


US 301 PD&E Study
Potentially Impacted Parcels - Truck Route Best Fit
Map Sheet Overview

DRAFT
December 2016



- R/W
- Pond Easement
- Proposed R/W Line
- Impacted Parcel ID
- Pond
- Retention Area
- Parcels & PIN



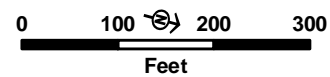
US 301 PD&E Study
Potentially Impacted Parcels - Truck Route Best Fit
Map Sheet 1 of 11

DRAFT
December 2016



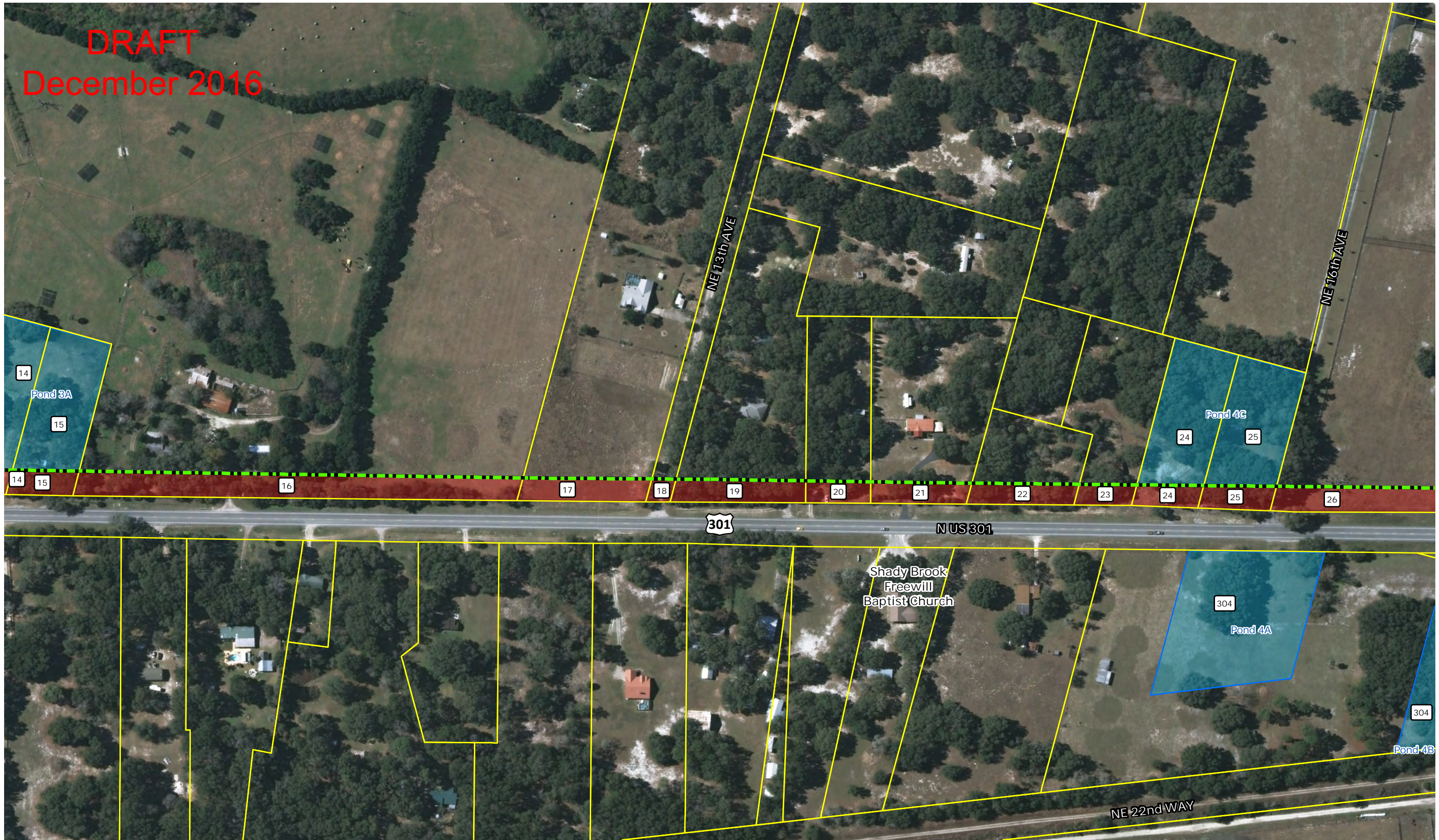
- R/W
- Pond Easement
- Proposed R/W Line
- Impacted Parcel ID
- Pond
- Retention Area
- Parcels & PIN

1 Inch = 200 Feet

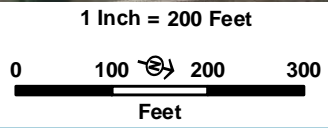


US 301 PD&E Study
Potentially Impacted Parcels - Truck Route Best Fit
Map Sheet 2 of 11

DRAFT
December 2016



- R/W
- Pond Easement
- Proposed R/W Line
- Impacted Parcel ID
- Pond
- Retention Area
- Parcels & PIN

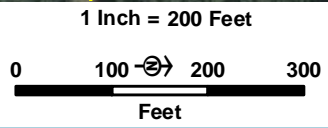


US 301 PD&E Study
Potentially Impacted Parcels - Truck Route Best Fit
Map Sheet 3 of 11

DRAFT
December 2016



- R/W
- Pond
- Retention Area
- Pond Easement
- Parcels & PIN
- Proposed R/W Line
- Impacted Parcel ID

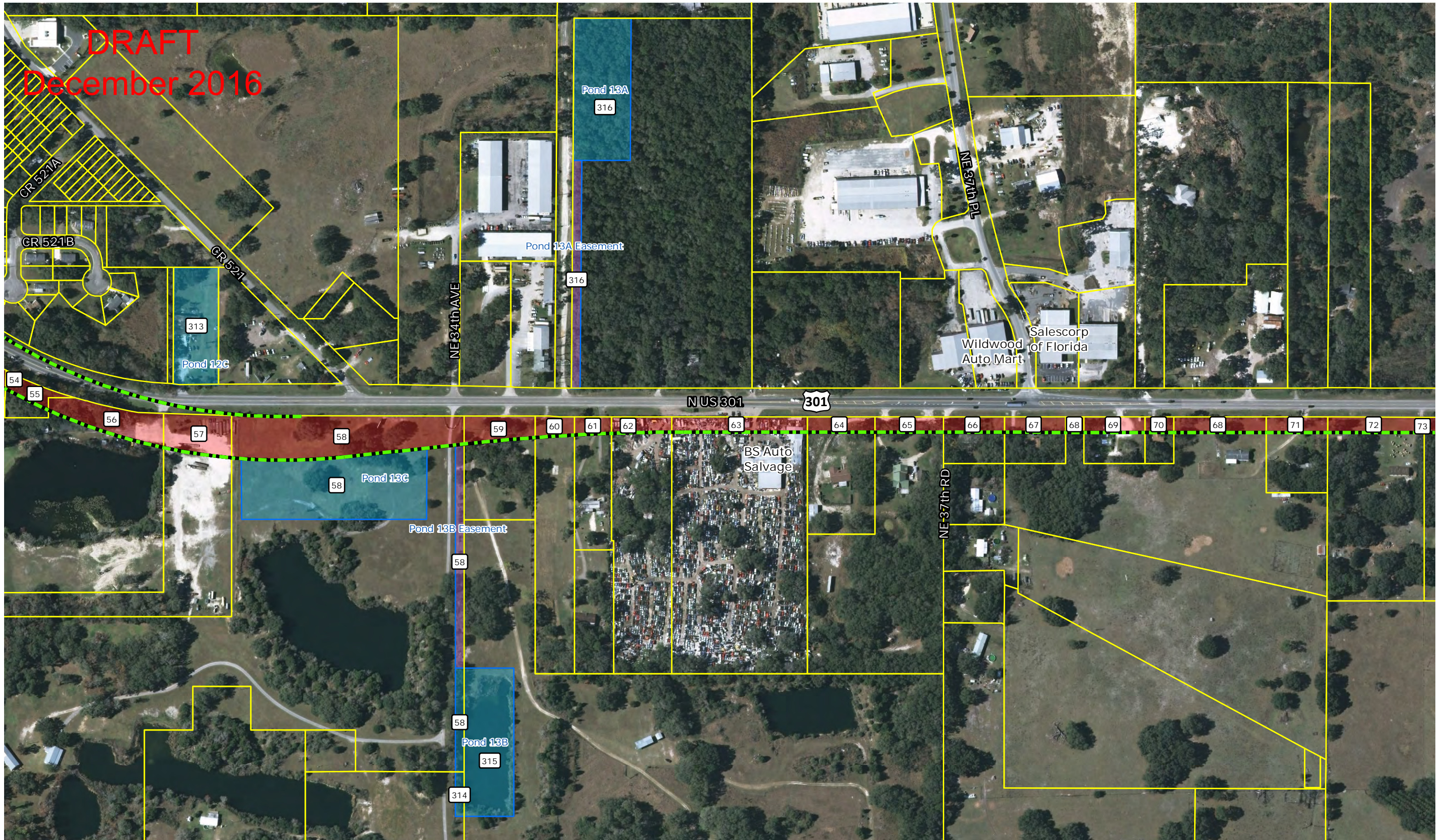


US 301 PD&E Study
Potentially Impacted Parcels - Truck Route Best Fit
Map Sheet 4 of 11

DRAFT
December 2016

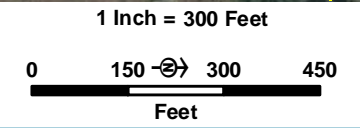
**Best-Fit Alignment –
Truck Route Alternative**
**Sheets 5, 6, 7 are currently under
development**

DRAFT
December 2016



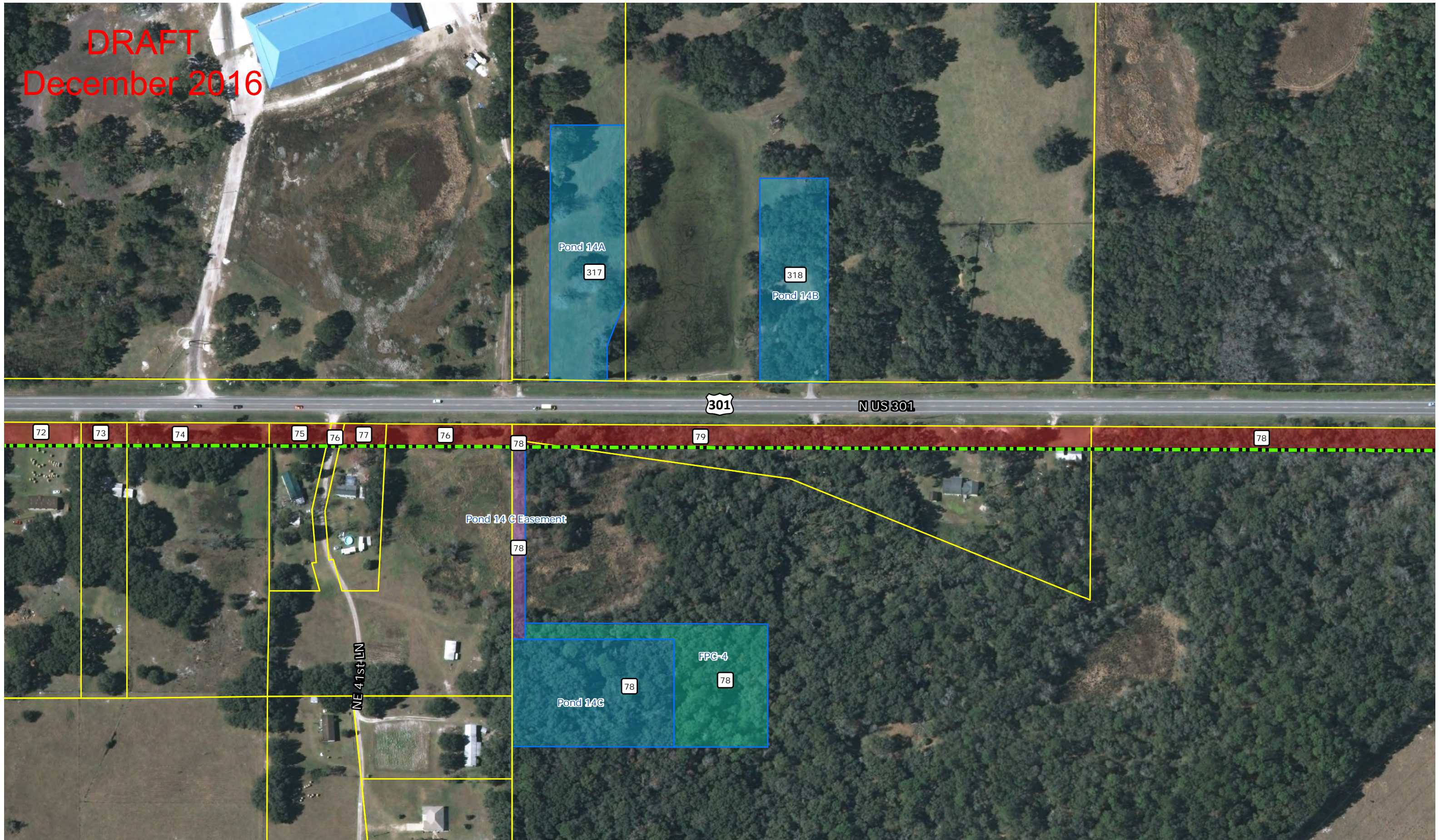
- R/W
- Pond
- Pond Easement
- Retention Area
- Proposed R/W Line
- Parcels & PIN

6 Impacted Parcel ID

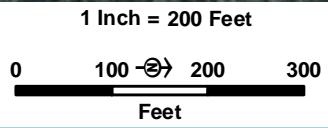


US 301 PD&E Study
Potentially Impacted Parcels - Truck Route Best Fit
Map Sheet 8 of 11

DRAFT
December 2016



- R/W
- Pond Easement
- Proposed R/W Line
- Impacted Parcel ID
- Pond
- Retention Area
- Parcels & PIN



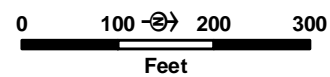
US 301 PD&E Study
Potentially Impacted Parcels - Truck Route Best Fit
Map Sheet 9 of 11

DRAFT
December 2016



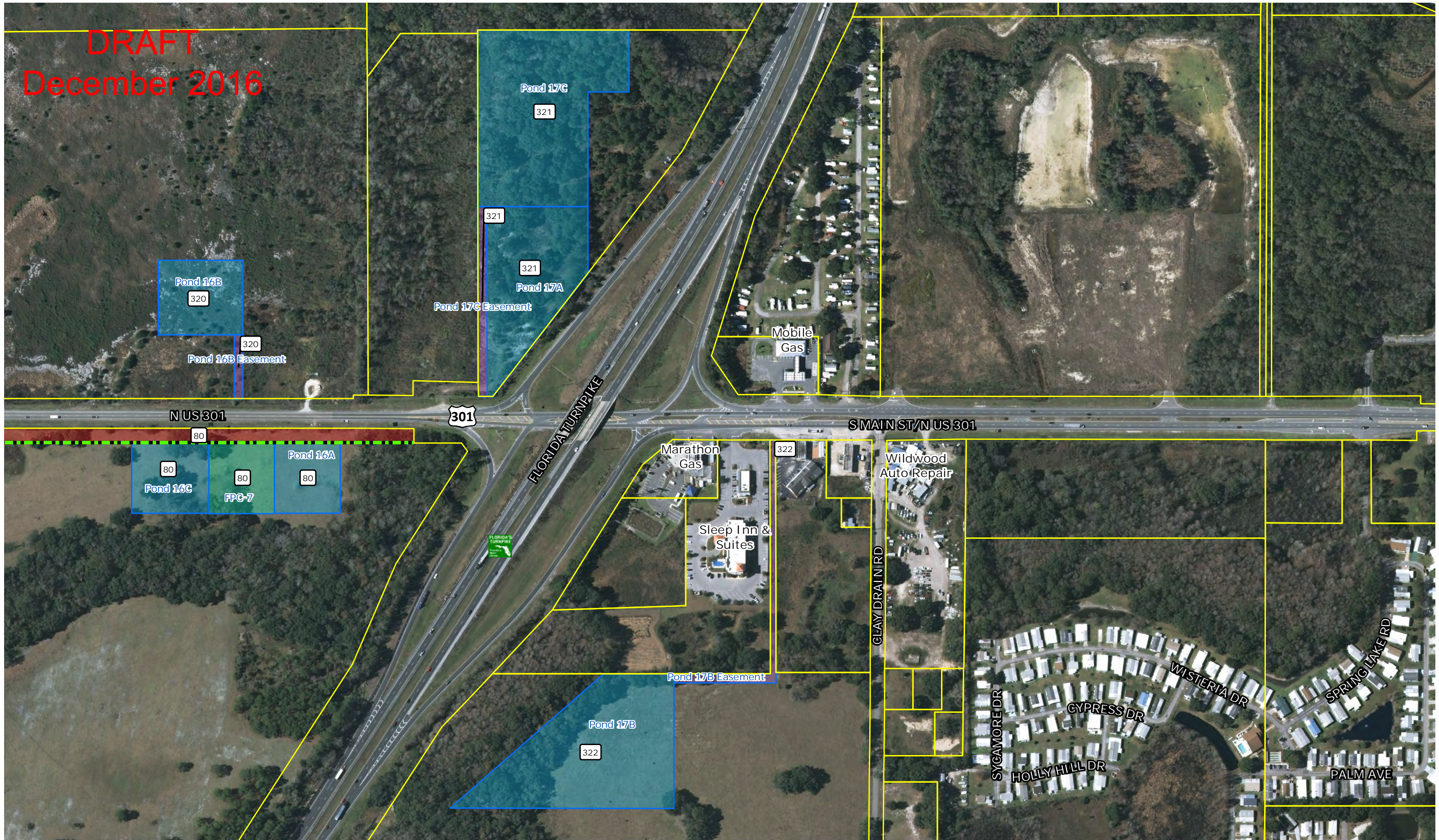
- R/W
- Pond
- Pond Easement
- Retention Area
- Proposed R/W Line
- 312-009 Parcels & PIN
- Impacted Parcel ID

1 Inch = 200 Feet

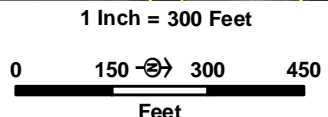


US 301 PD&E Study
Potentially Impacted Parcels - Truck Route Best Fit
Map Sheet 10 of 11

DRAFT
December 2016



- R/W
- Pond Easement
- Proposed R/W Line
- 6 Impacted Parcel ID
- Pond
- Retention Area
- Parcels & PIN

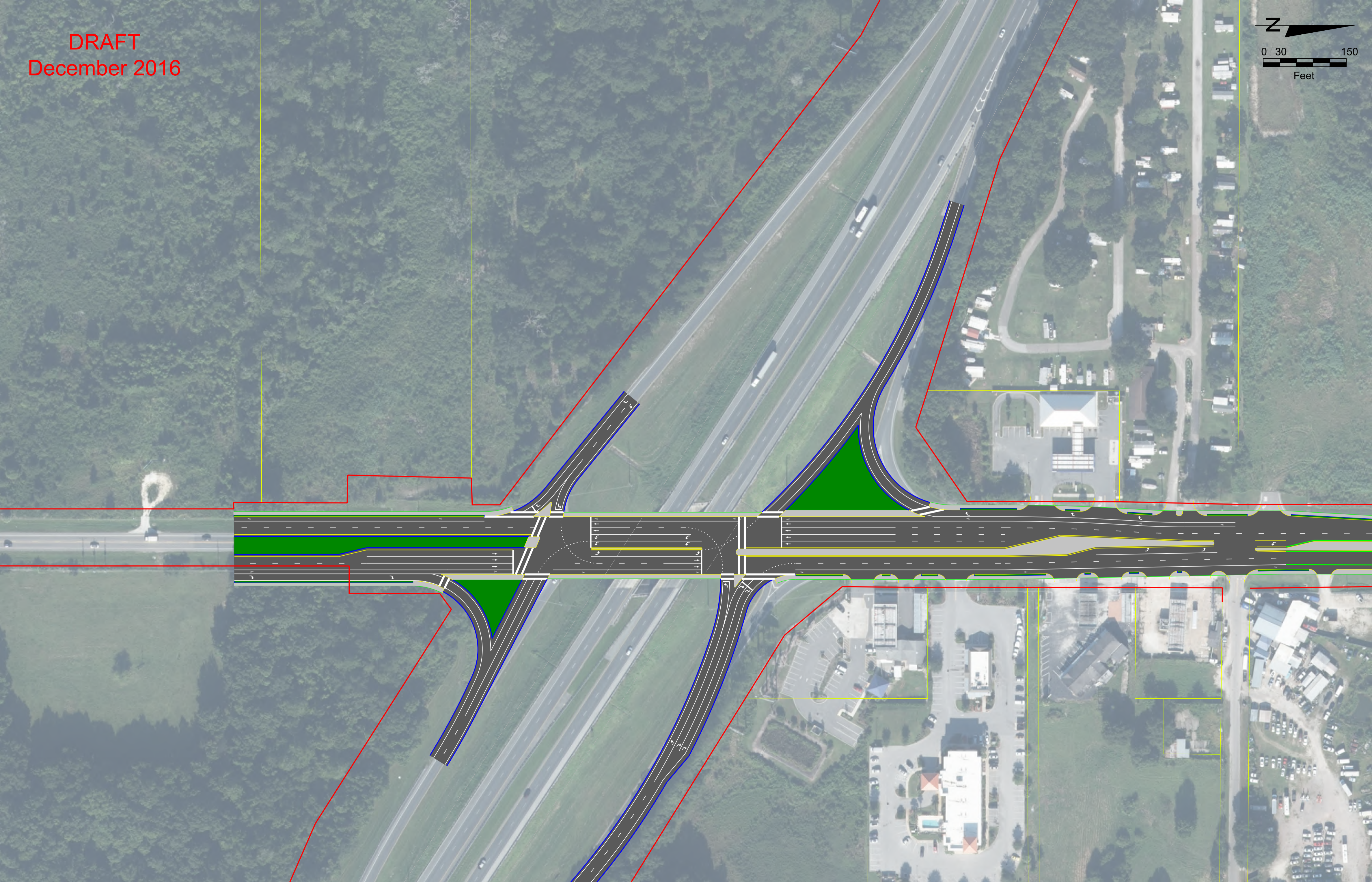
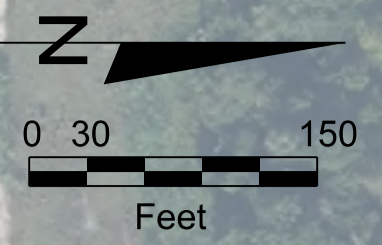


US 301 PD&E Study
Potentially Impacted Parcels - Truck Route Best Fit
Map Sheet 11 of 11

DRAFT
December 2016

Interchange Alternative - TUDI

DRAFT
December 2016



DRAFT
December 2016

Interchange Alternative - DDI

DRAFT
December 2016

