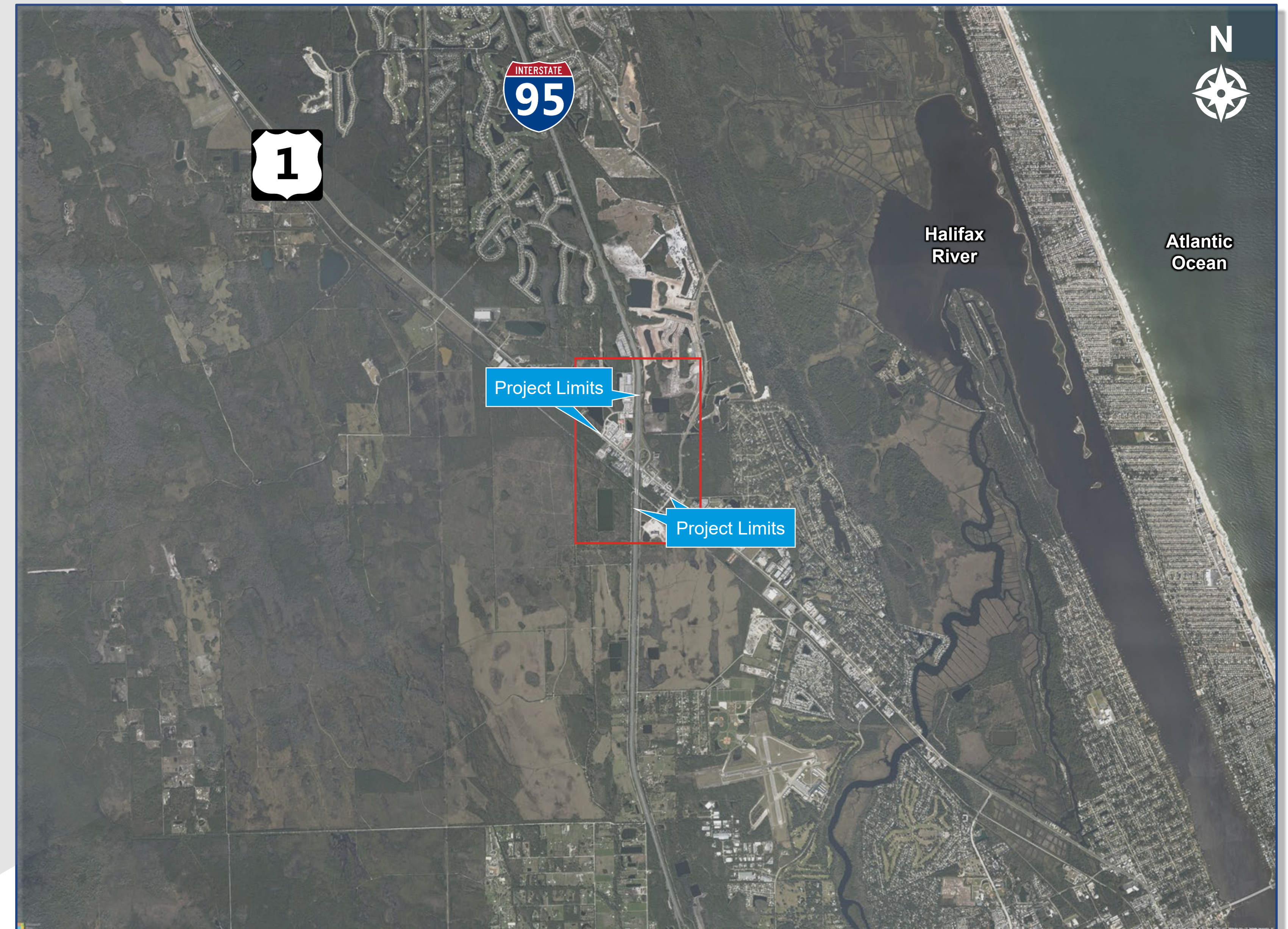
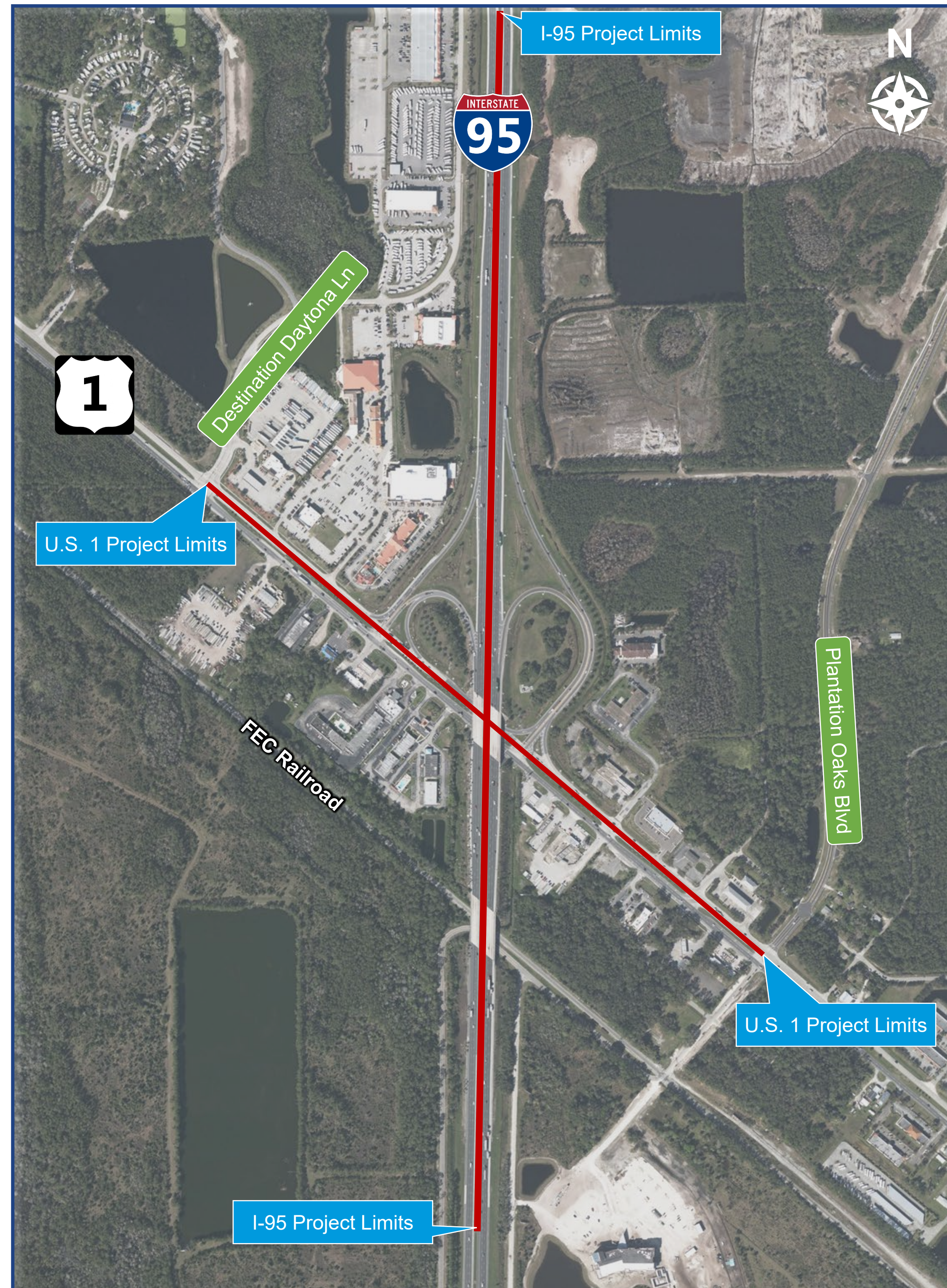


About this Project



What is the purpose of this study?

The purpose of this PD&E Study is to accommodate the existing and future travel demand, improve safety, and enhance pedestrian connectivity by developing solutions, known as alternatives, that improve operations at the I-95 interchange and along U.S. 1.

What is the need for this study?

This project is needed to improve traffic operations and mobility, reduce congestion, and enhance safety for all modes of travel, including bicyclists and pedestrians.