

ROADWAY RESURFACING

U.S. 1 (S.R. 5) from north of Palm Coast Parkway to south of Pellicer Creek

Flagler County

**Financial Project
Identification
(FPID) No.:**
445216-2

PROJECT DESCRIPTION

The Florida Department of Transportation (FDOT) is repaving a nearly seven-mile segment of U.S. 1 (State Road (S.R.) 5) from north of Palm Coast Parkway to south of the St. Johns County line in Palm Coast to extend the lifespan of the existing roadway. Additional improvements include minor drainage enhancements, updated roadway signage, and pavement markings. In addition, the in-ground sensors located at the weigh station will be replaced. Please note that this project does not include work on the roundabouts at the West Matanzas Woods Parkway and Old Kings Road intersections.

WHAT TO EXPECT

Motorists should expect intermittent daytime lane closures throughout the project. Some driveways along the corridor may experience limited access; therefore, the project team will coordinate directly with affected property owners before any such impacts.

Uneven pavement is a common, unavoidable roadway condition in resurfacing projects, as the contractor must apply different layers of asphalt during various construction phases. Motorists are asked to use extra caution while driving through the work zone. Road conditions during construction are temporary and will improve as the project progresses.

Drivers are encouraged to follow posted signage, remain alert, and exercise caution while traveling through the work zone. The construction schedule is subject to change due to inclement weather or other unforeseen circumstances. For the latest project updates and lane closure information, please visit FDOT's Central Florida website at www.cflroads.com.

CONTRACTOR

P&S Paving, Inc.

PROJECT COST

\$8 million

PROJECT START

July 2025

ESTIMATED COMPLETION

Late 2025



**FOR QUESTIONS, CONCERNS,
OR PROJECT UPDATES**

Send a request to:

Debbie Cople
Community Outreach Specialist
386-740-3566
Debbie.Cople@dot.state.fl.us



For more information,
scan the QR code above or
visit the project website at
[www.cflroads.com/project/
445216-2](http://www.cflroads.com/project/445216-2)

SEE REVERSE SIDE FOR PROJECT LOCATION MAP



Follow us on social media



CFLRoads.com



Facebook.com/MyFDOTCFL



[@MyFDOT_CFL](https://twitter.com/MyFDOT_CFL)



[@MyFDOT_CFL](https://www.instagram.com/MyFDOT_CFL)

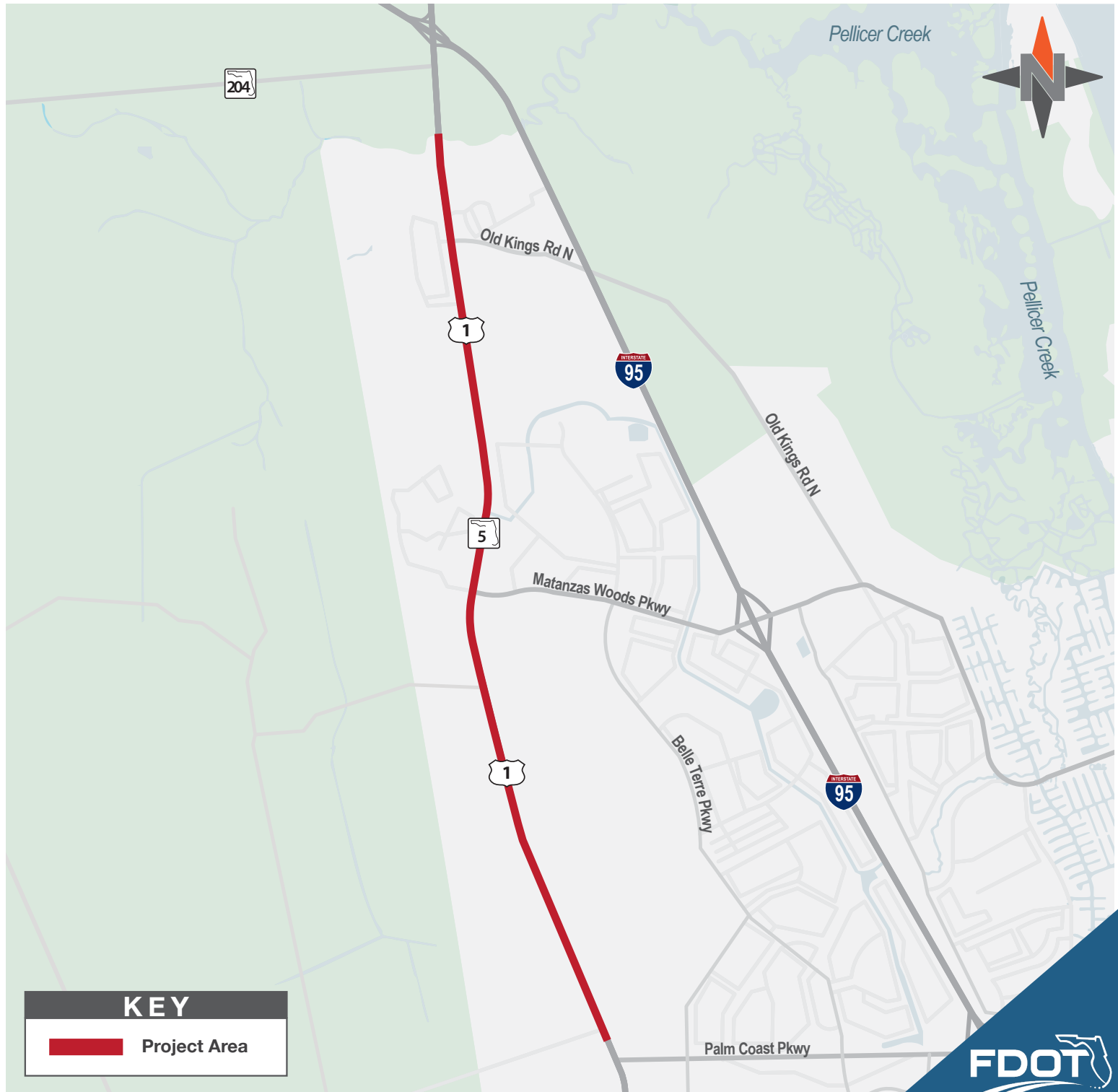
ROADWAY RESURFACING

Financial Project
Identification
(FPID) No.:
445216-2

U.S. 1 (S.R. 5) from north of Palm Coast Parkway to south of Pellicer Creek

Flagler County

PROJECT MAP



KEY

Project Area



Follow us on social media



CFLRoads.com



Facebook.com/MyFDOTCFL



@MyFDOT_CFL



@MyFDOT_CFL