

Welcome!

Nova Road (S.R. 5A) at Miles Drive
Safety Improvements

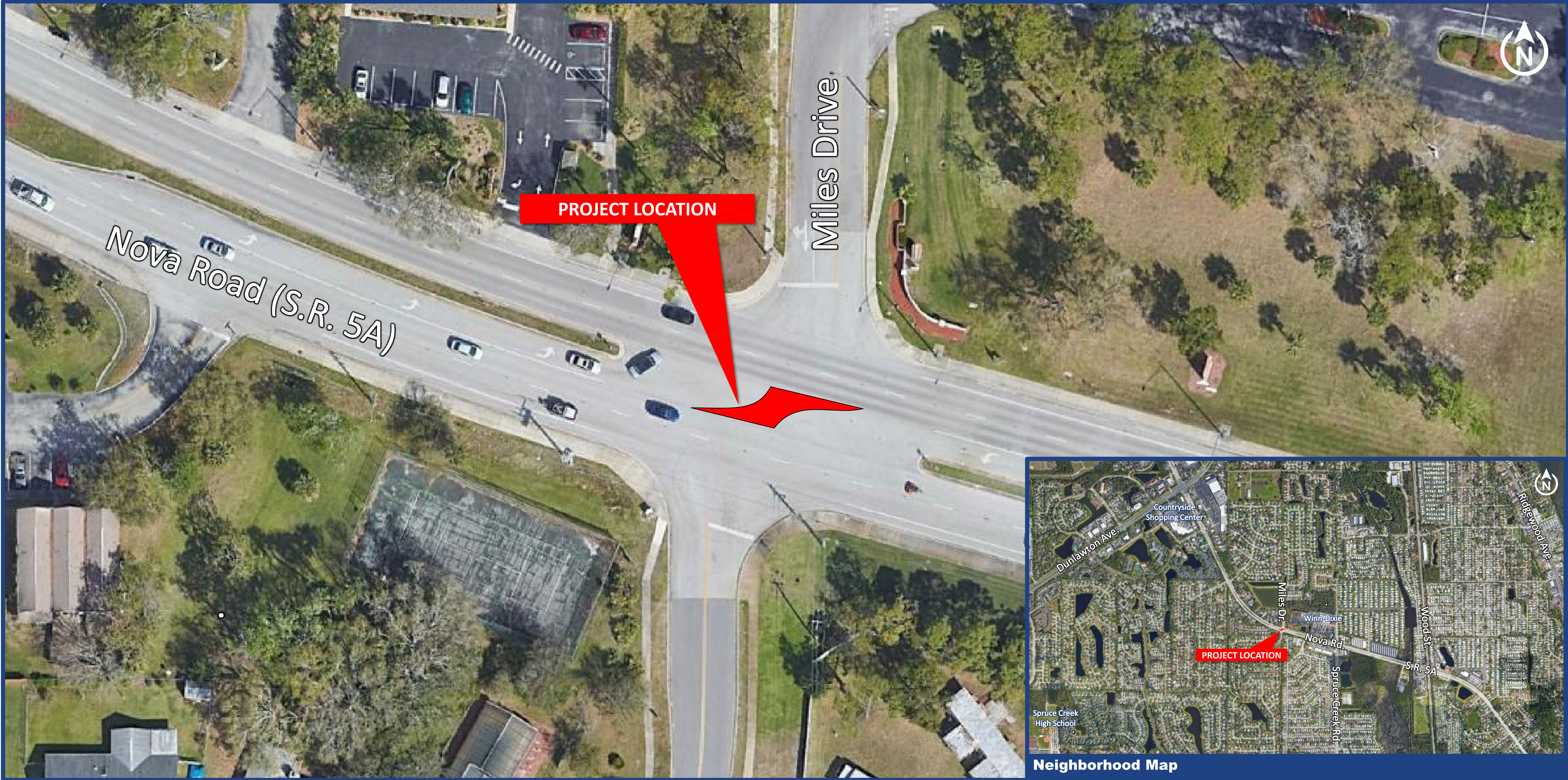
Public Meeting
Thursday, February 3, 2022



Volusia County, Florida
Financial Project Identification (FPID) No. 992100-4
www.CFLRoads.com/project/992100-4



Project Location



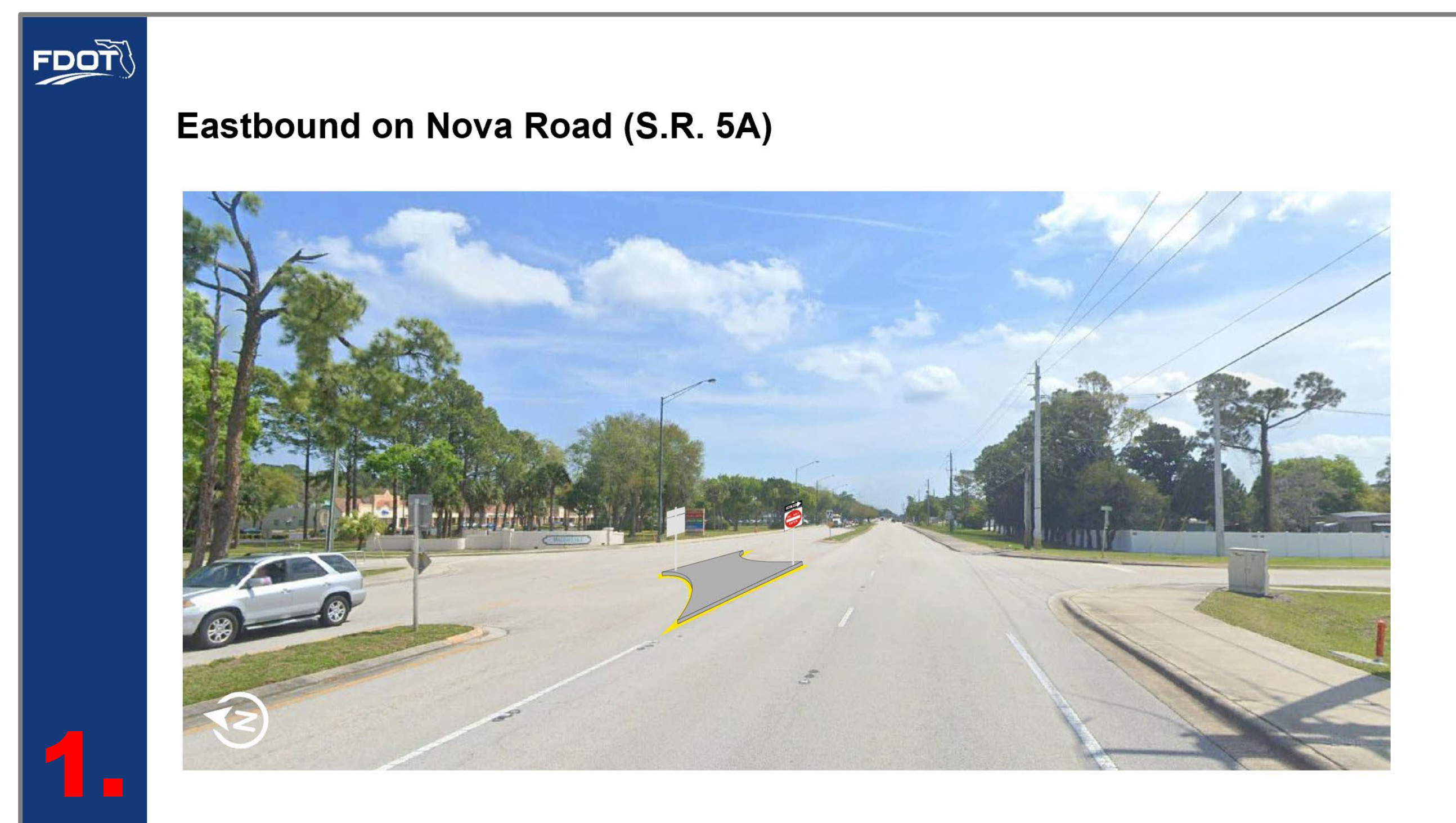
Download this exhibit on the project website
www.CFLRoads.com/project/992100-4
Volusia County, Florida
Financial Project Identification (FPID) No. 992100-4



Proposed Improvements



Project Map showing the proposed improvements and viewpoints for the renderings to the right.



Proposed improvements looking eastbound on Nova Road (S.R. 5A), including the construction of a median island, creating a two-way directional median opening.



Proposed improvements looking southbound at Miles Drive, including the construction of a median island, creating a two-way directional median opening. Motorists will only be able to turn right onto Nova Road (S.R. 5A).



Download this exhibit on the project website
www.CFLRoads.com/project/992100-4
 Volusia County, Florida
 Financial Project Identification (FPID) No. 992100-4



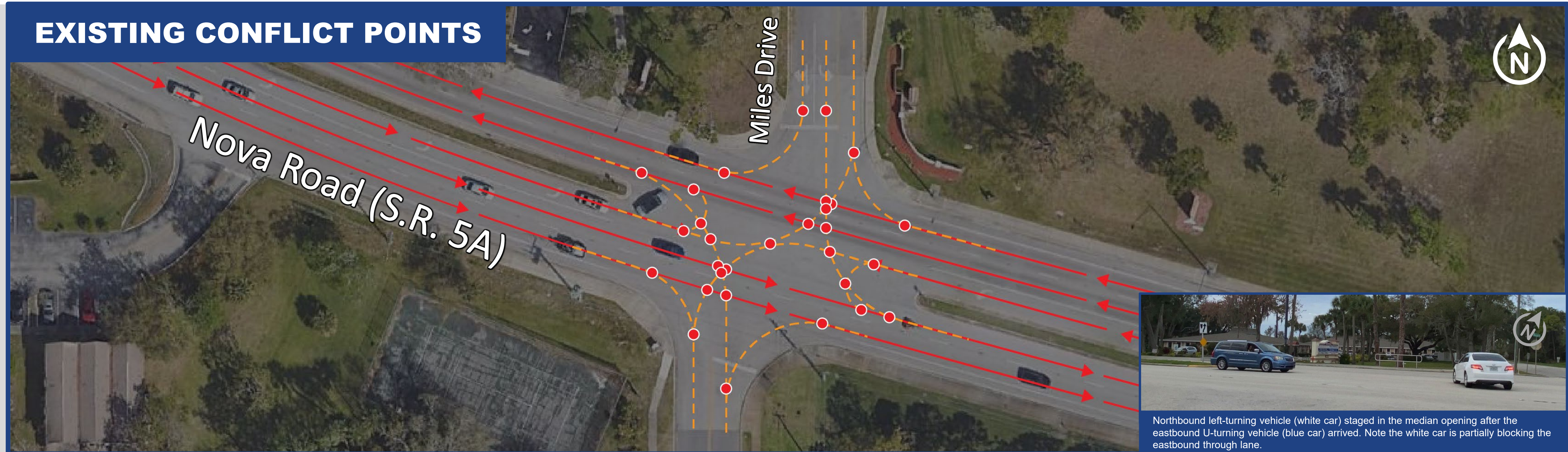
Conflict Points

Conflict points are locations along a roadway where the paths of two vehicles can legally cross just not at the same time. Each conflict point is a location where a crash can occur.

Currently, there is a full median opening at the intersection of Nova Road (S.R. 5A) and Miles Drive. Drivers staged in the median intending to turn northbound or southbound cannot clearly see approaching eastbound or westbound vehicles on Nova Road. While waiting to turn, drivers can block the inside through lane of Nova Road. Eastbound or westbound left-turning drivers can block the sightline for northbound or southbound left-turning drivers who had staged in the median opening.

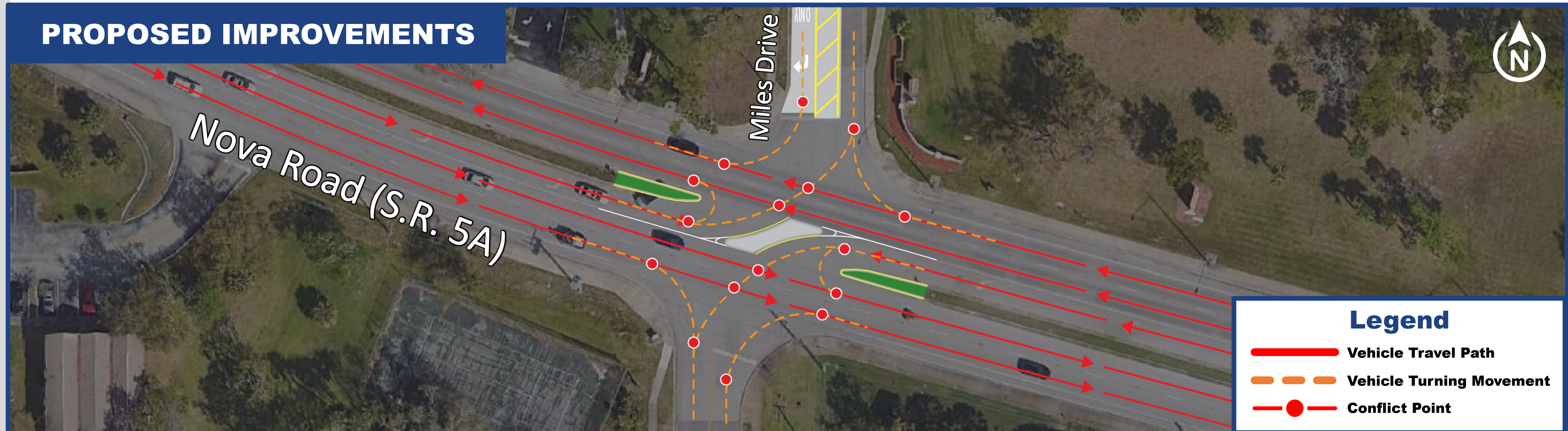
The proposed improvements aim to reduce these points of conflict.

EXISTING CONFLICT POINTS



Northbound left-turning vehicle (white car) staged in the median opening after the eastbound U-turning vehicle (blue car) arrived. Note the white car is partially blocking the eastbound through lane.

PROPOSED IMPROVEMENTS



Legend

- Vehicle Travel Path
- - - Vehicle Turning Movement
- Conflict Point



Download this exhibit on the project website
www.CFLRoads.com/project/992100-4
Volusia County, Florida
Financial Project Identification (FPID) No. 992100-4

