

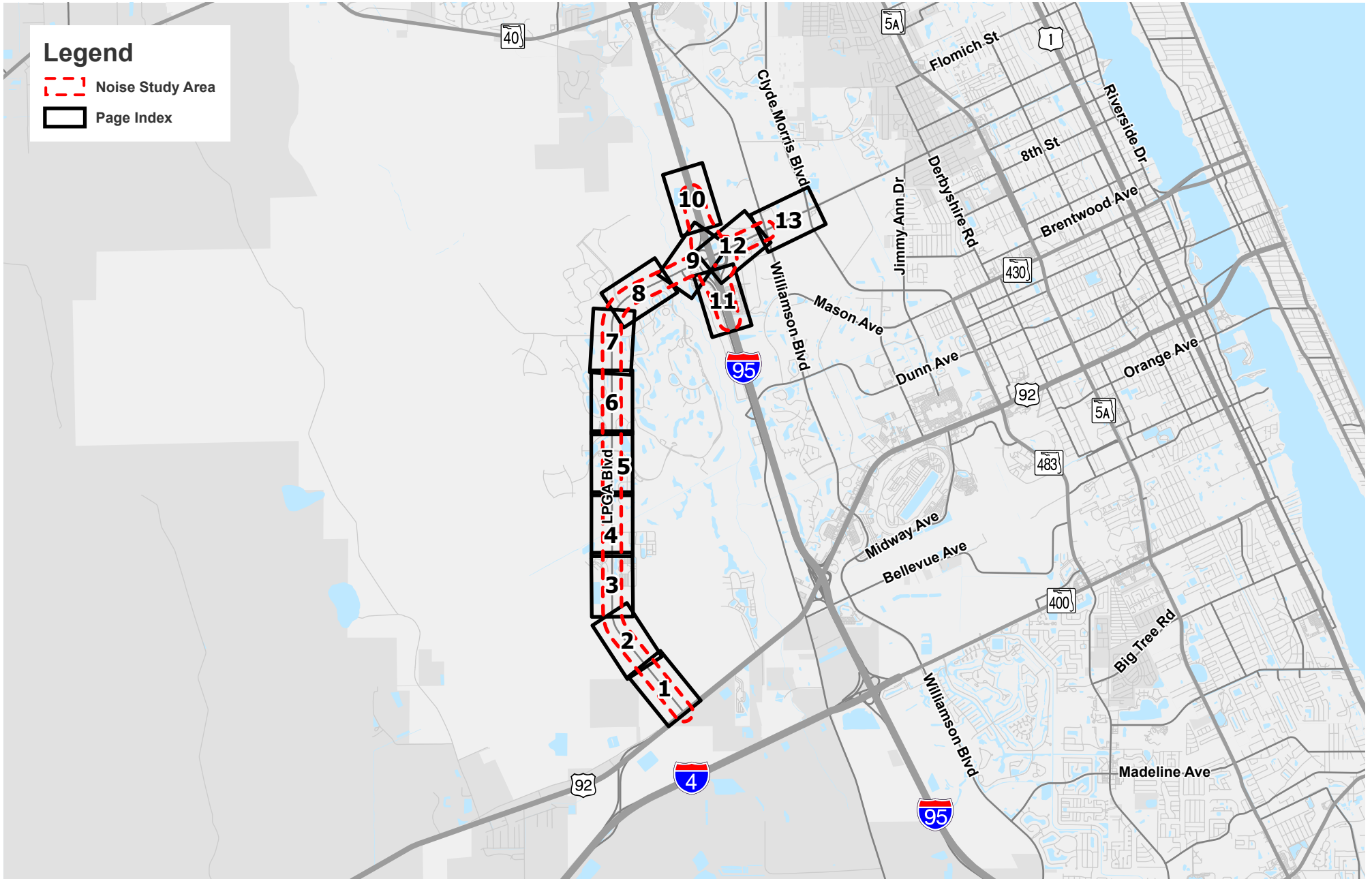
## Physical Resources Appendix

Contents:

Noise Map

Potential Contamination Site Map

DRAFT

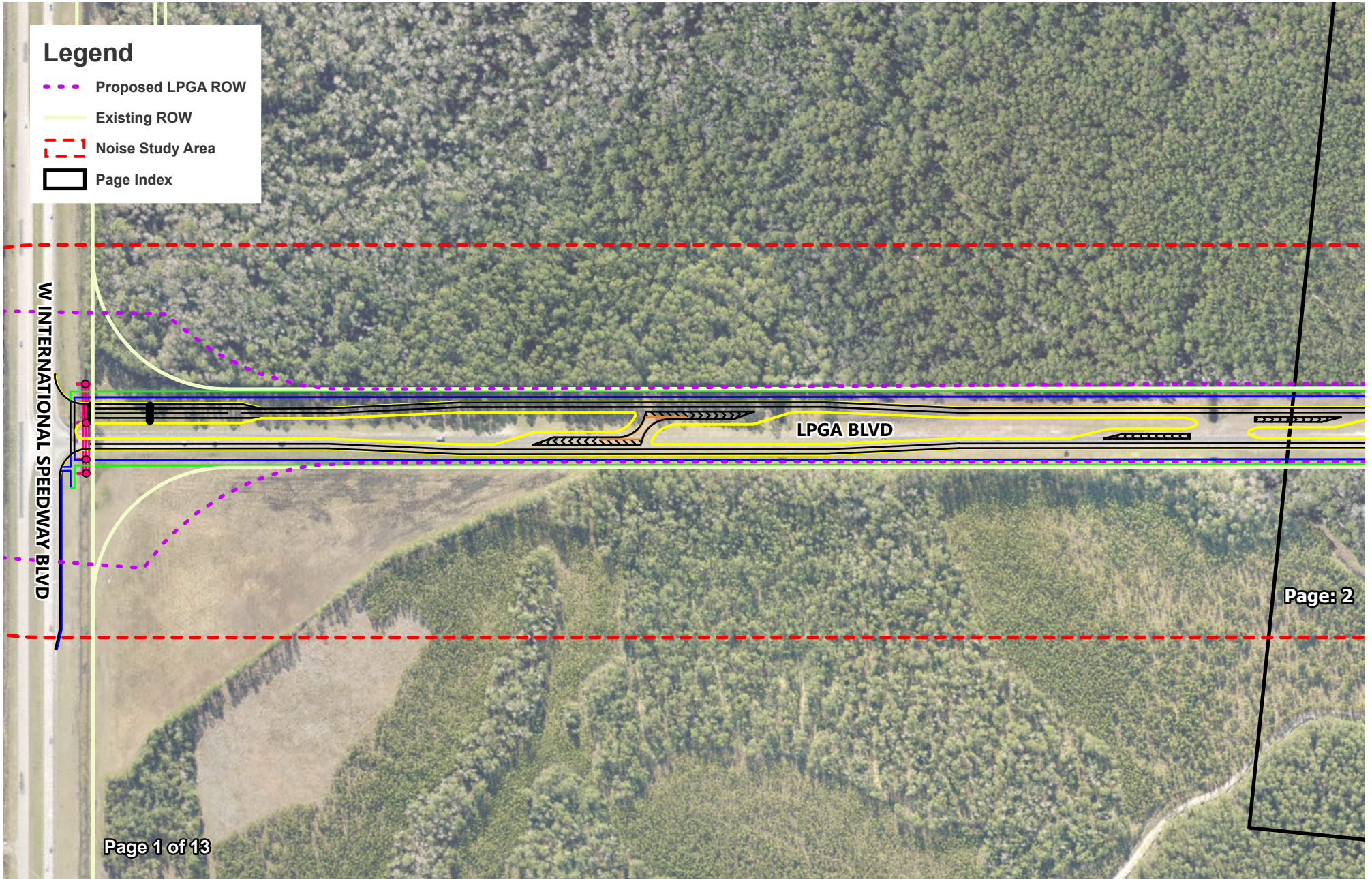


**Legend**

- Noise Study Area
- Page Index



**NOISE ANALYSIS OVERVIEW MAP**  
LPGA BOULEVARD FROM US 92 (SR 600) TO WILLIAMSON BOULEVARD PD&E STUDY  
VOLUSIA COUNTY, FLORIDA



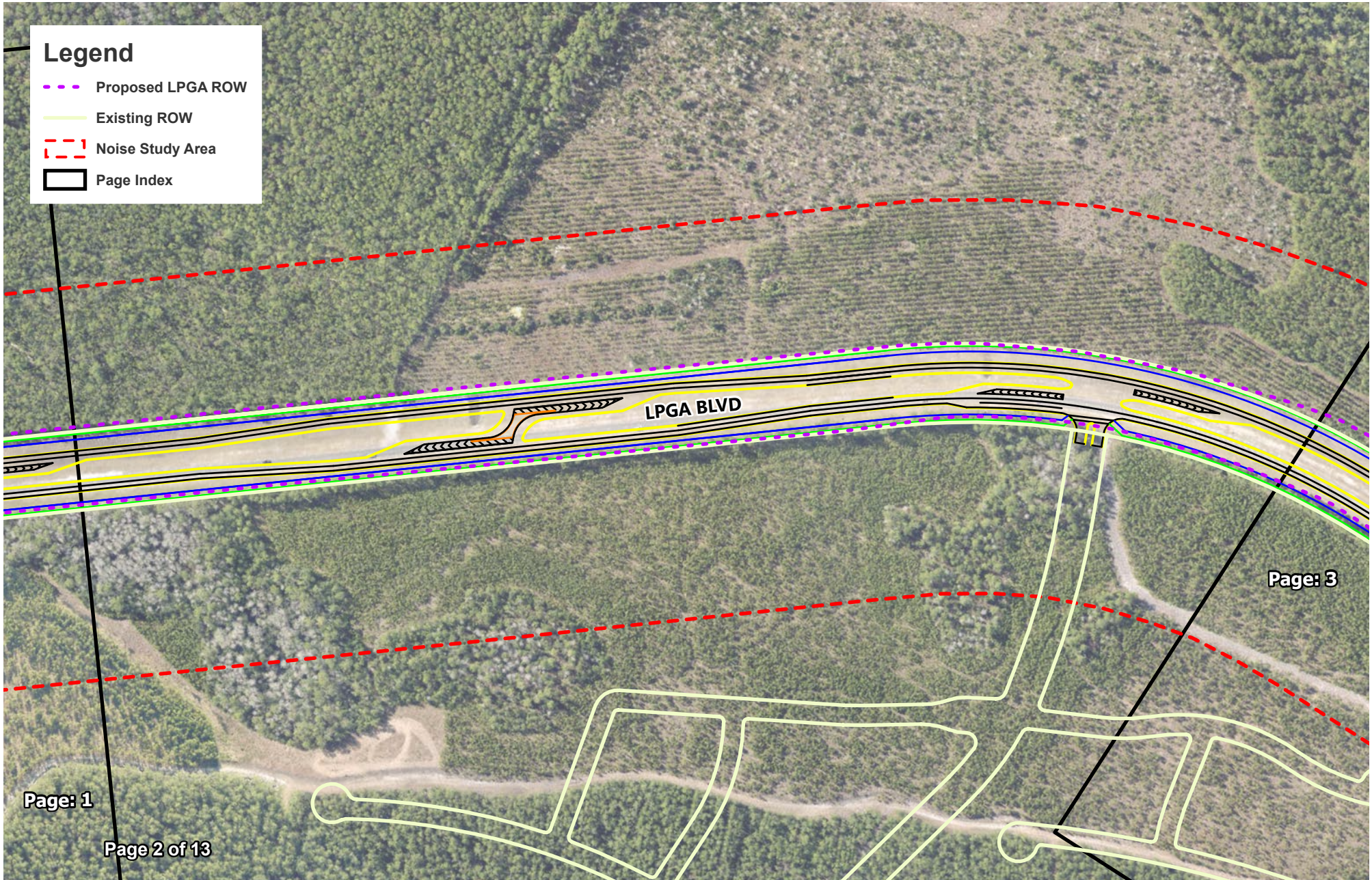
Page 1 of 13

Page: 2



**NOISE ANALYSIS MAP**  
LPGA BOULEVARD FROM US 92 (SR 600) TO WILLIAMSON BOULEVARD PD&E STUDY  
VOLUSIA COUNTY, FLORIDA

FPID: 448456-1-22-01

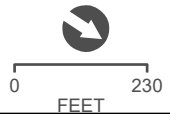


**Legend**

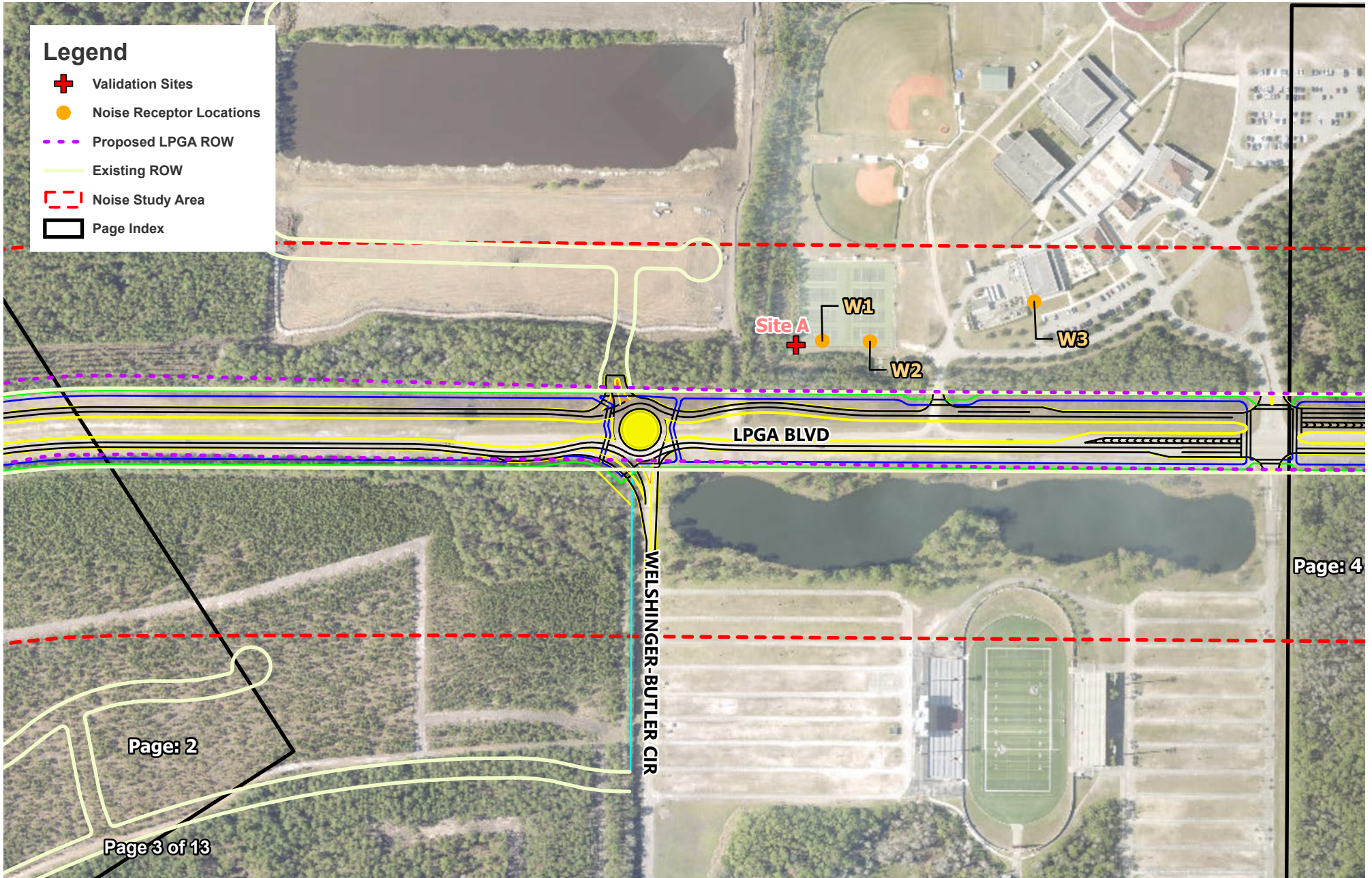
- Proposed LPGA ROW
- Existing ROW
- Noise Study Area
- Page Index

Page: 1  
Page 2 of 13

Page: 3



**NOISE ANALYSIS MAP**  
LPGA BOULEVARD FROM US 92 (SR 600) TO WILLIAMSON BOULEVARD PD&E STUDY  
VOLUSIA COUNTY, FLORIDA

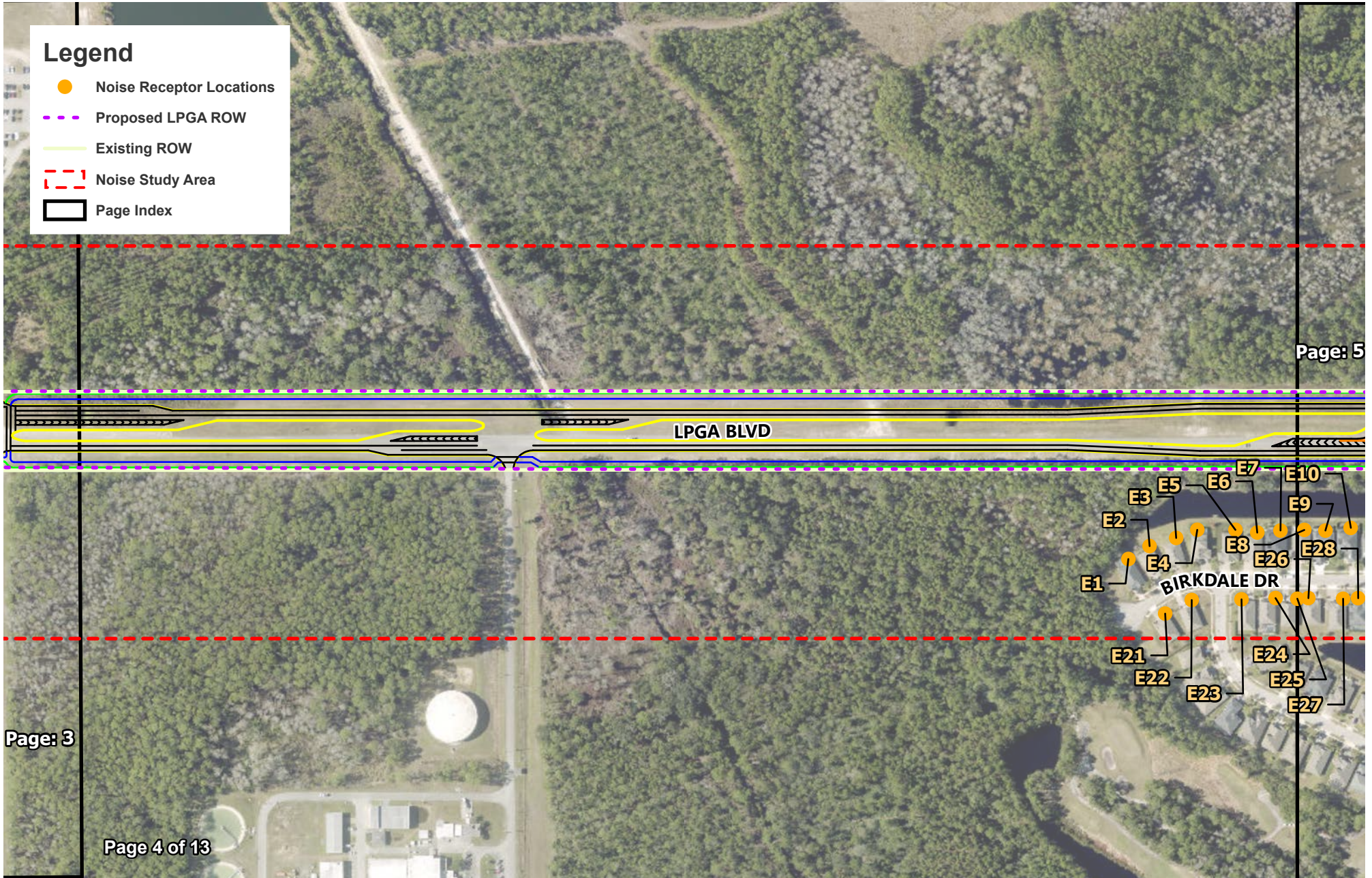


**Legend**

- ⊕ Validation Sites
- Noise Receptor Locations
- - - Proposed LPGA ROW
- Existing ROW
- - - Noise Study Area
- ▭ Page Index



**NOISE ANALYSIS MAP**  
LPGA BOULEVARD FROM US 92 (SR 600) TO WILLIAMSON BOULEVARD PD&E STUDY  
VOLUSIA COUNTY, FLORIDA



Page: 3

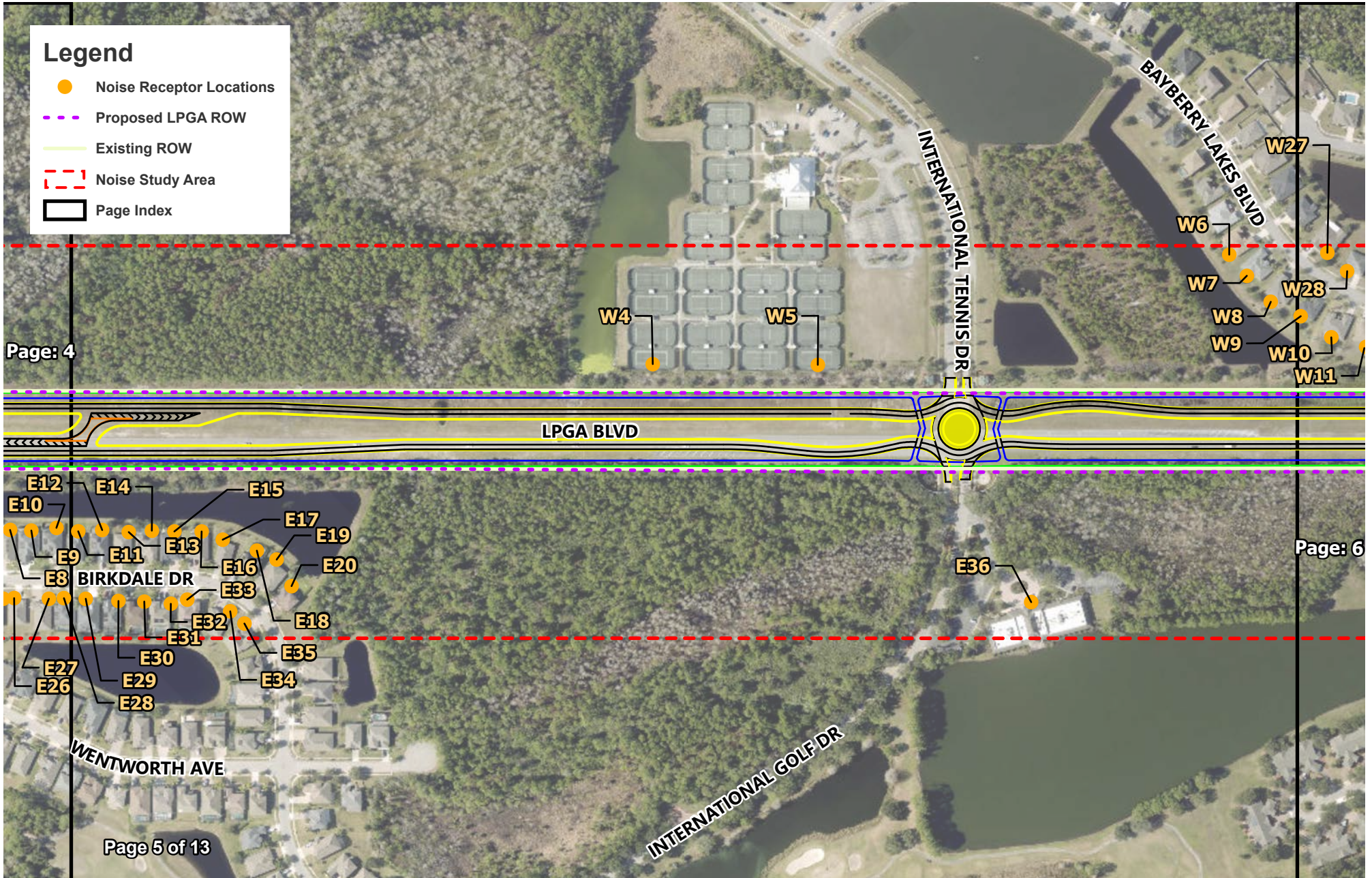
Page: 5

Page 4 of 13



**NOISE ANALYSIS MAP**  
LPGA BOULEVARD FROM US 92 (SR 600) TO WILLIAMSON BOULEVARD PD&E STUDY  
VOLUSIA COUNTY, FLORIDA

FPID: 448456-1-22-01



**Legend**

- Noise Receptor Locations
- - - Proposed LPGA ROW
- Existing ROW
- - - Noise Study Area
- Page Index

Page: 4

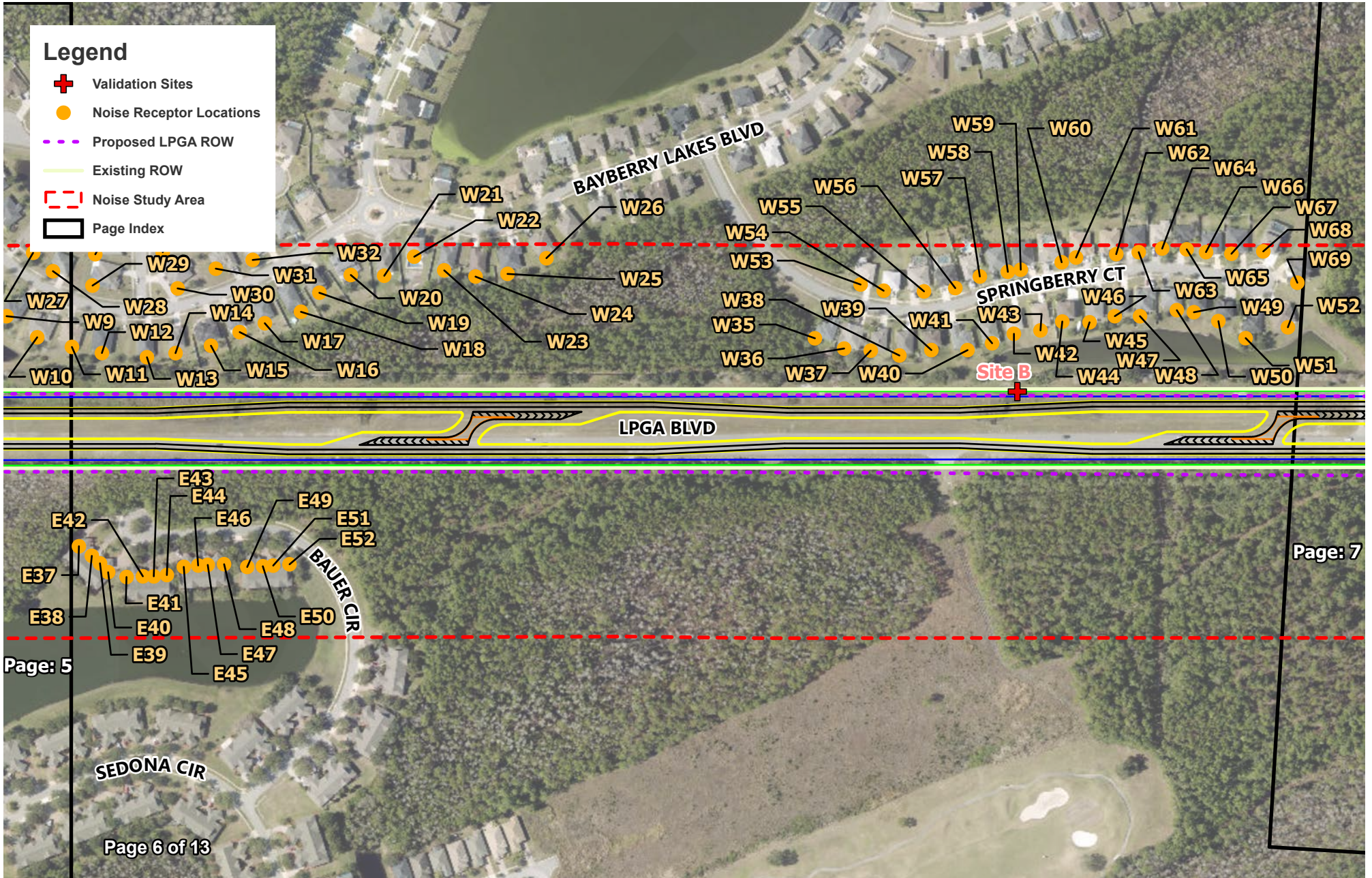
Page: 6

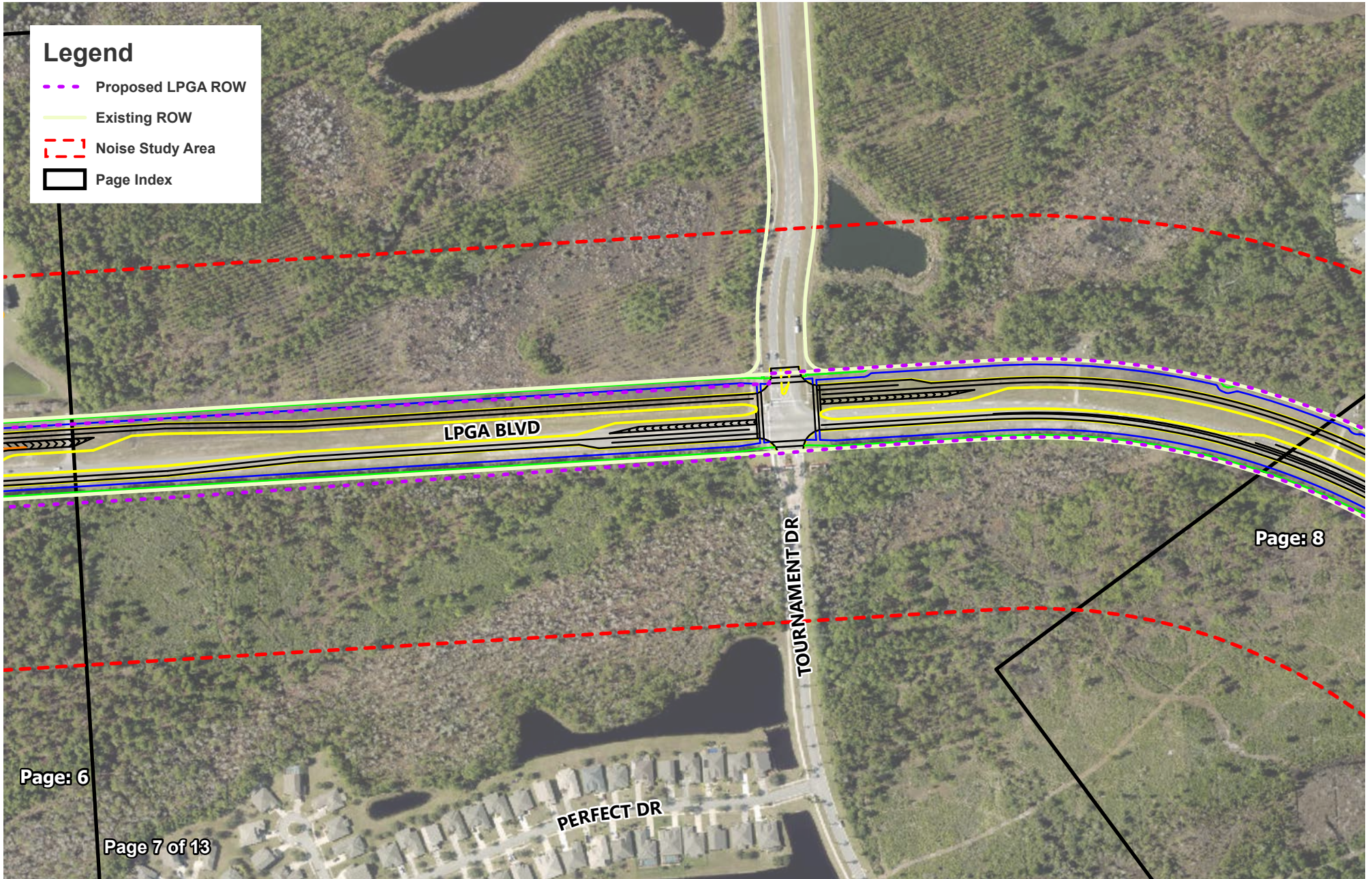
Page 5 of 13



**NOISE ANALYSIS MAP**  
LPGA BOULEVARD FROM US 92 (SR 600) TO WILLIAMSON BOULEVARD PD&E STUDY  
VOLUSIA COUNTY, FLORIDA

FPID: 448456-1-22-01





Page: 6

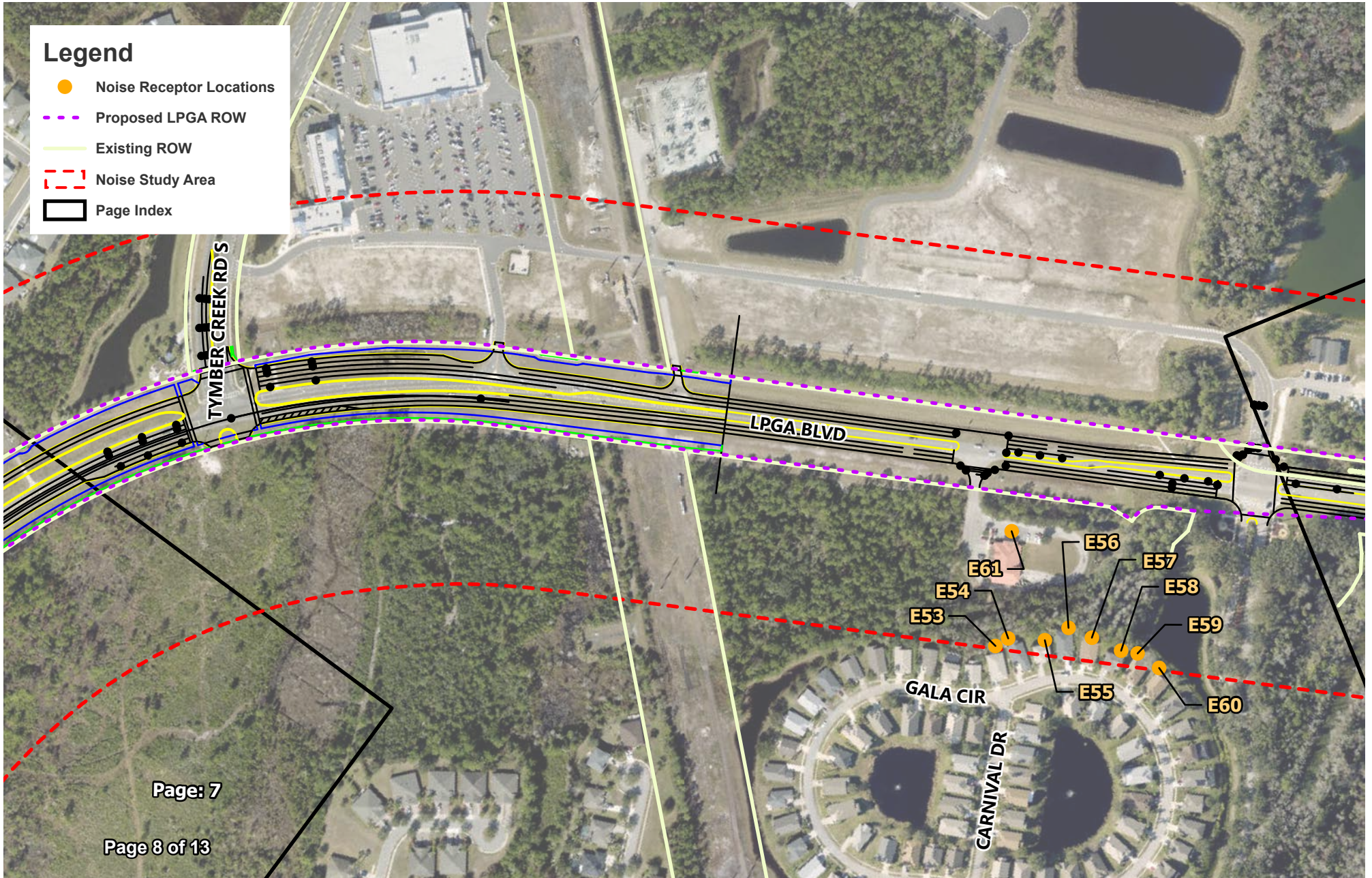
Page 7 of 13

Page: 8



**NOISE ANALYSIS MAP**  
LPGA BOULEVARD FROM US 92 (SR 600) TO WILLIAMSON BOULEVARD PD&E STUDY  
VOLUSIA COUNTY, FLORIDA

FPID: 448456-1-22-01

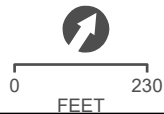


**Legend**

- Noise Receptor Locations
- - - Proposed LPGA ROW
- Existing ROW
- - - Noise Study Area
- Page Index

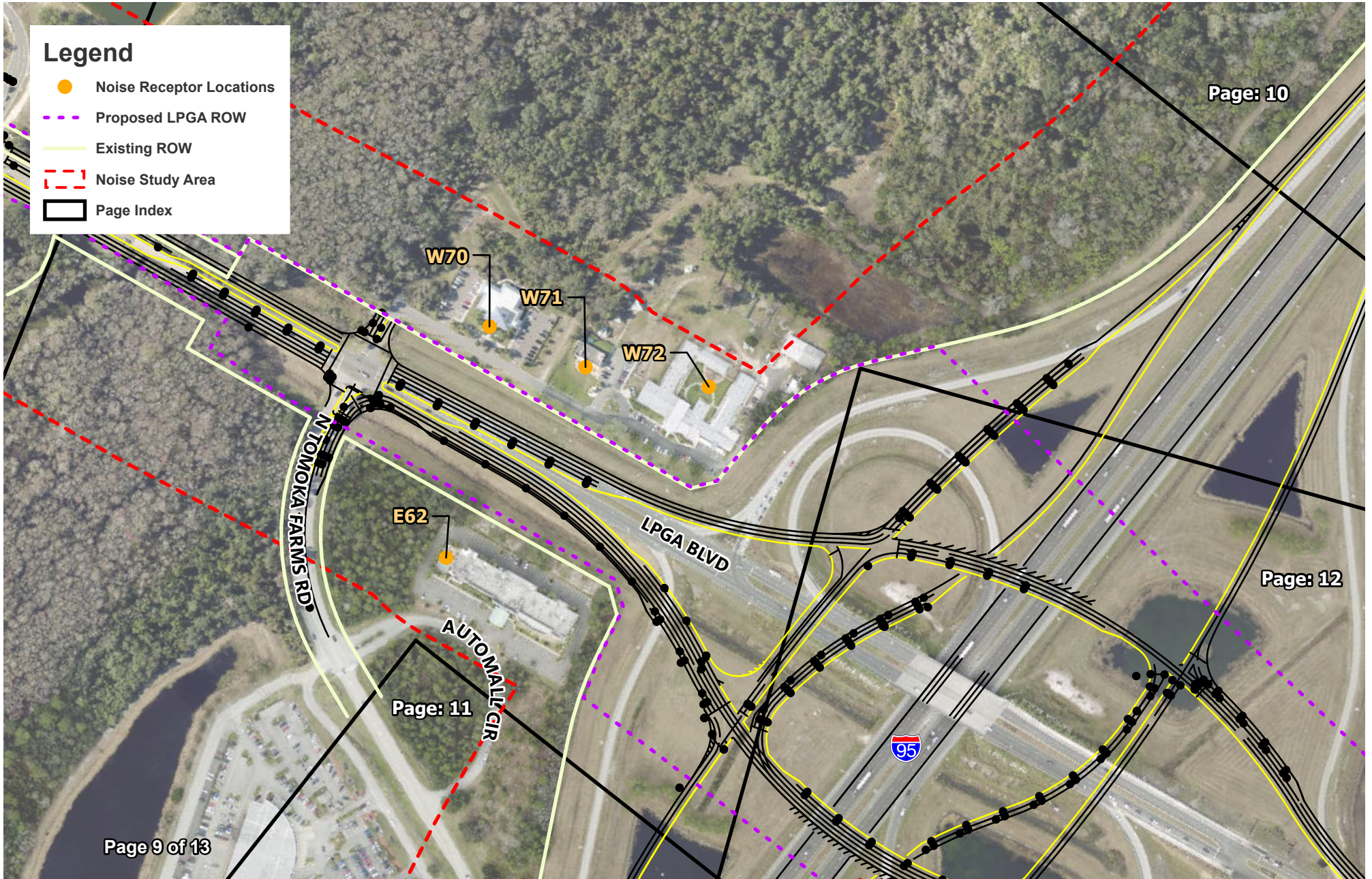
Page: 7

Page 8 of 13



**NOISE ANALYSIS MAP**  
LPGA BOULEVARD FROM US 92 (SR 600) TO WILLIAMSON BOULEVARD PD&E STUDY  
VOLUSIA COUNTY, FLORIDA

FPID: 448456-1-22-01



**NOISE ANALYSIS MAP**  
LPGA BOULEVARD FROM US 92 (SR 600) TO WILLIAMSON BOULEVARD PD&E STUDY  
VOLUSIA COUNTY, FLORIDA



**Legend**

- Existing ROW
- Noise Study Area
- Page Index

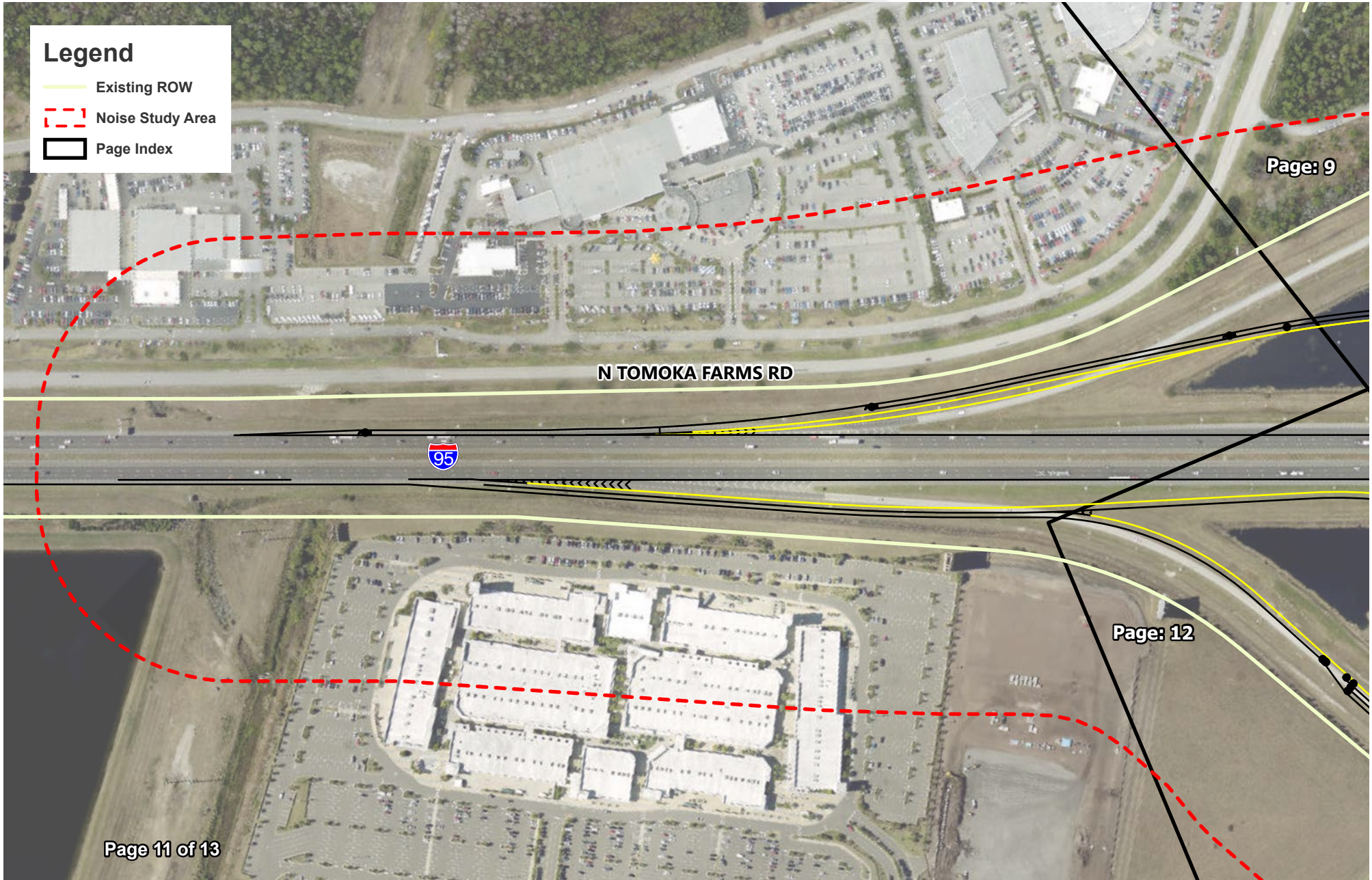
Page: 9

Page 10 of 13

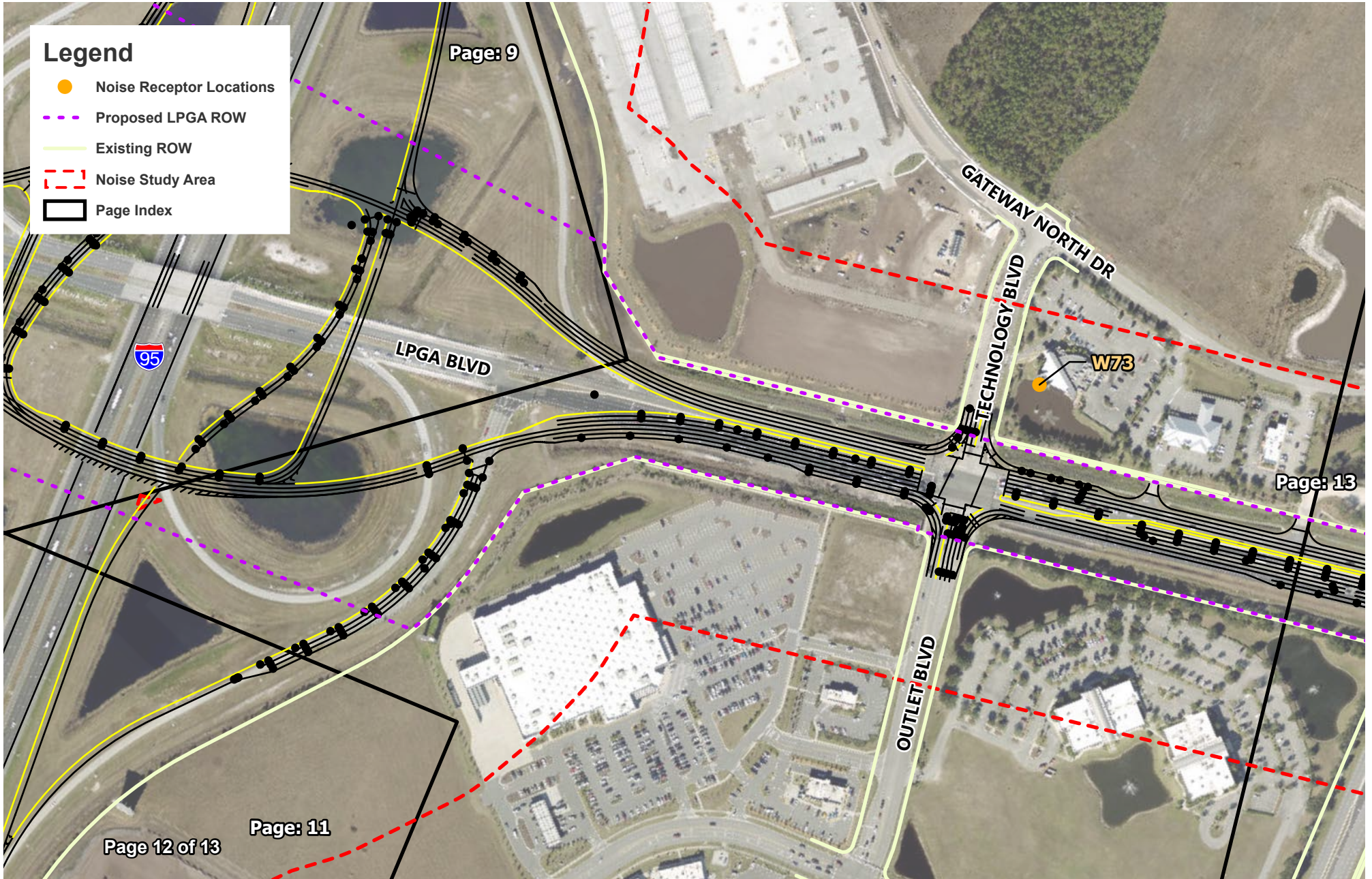


**NOISE ANALYSIS MAP**  
LPGA BOULEVARD FROM US 92 (SR 600) TO WILLIAMSON BOULEVARD PD&E STUDY  
VOLUSIA COUNTY, FLORIDA

FPID: 448456-1-22-01



**NOISE ANALYSIS MAP**  
LPGA BOULEVARD FROM US 92 (SR 600) TO WILLIAMSON BOULEVARD PD&E STUDY  
VOLUSIA COUNTY, FLORIDA



Page 12 of 13

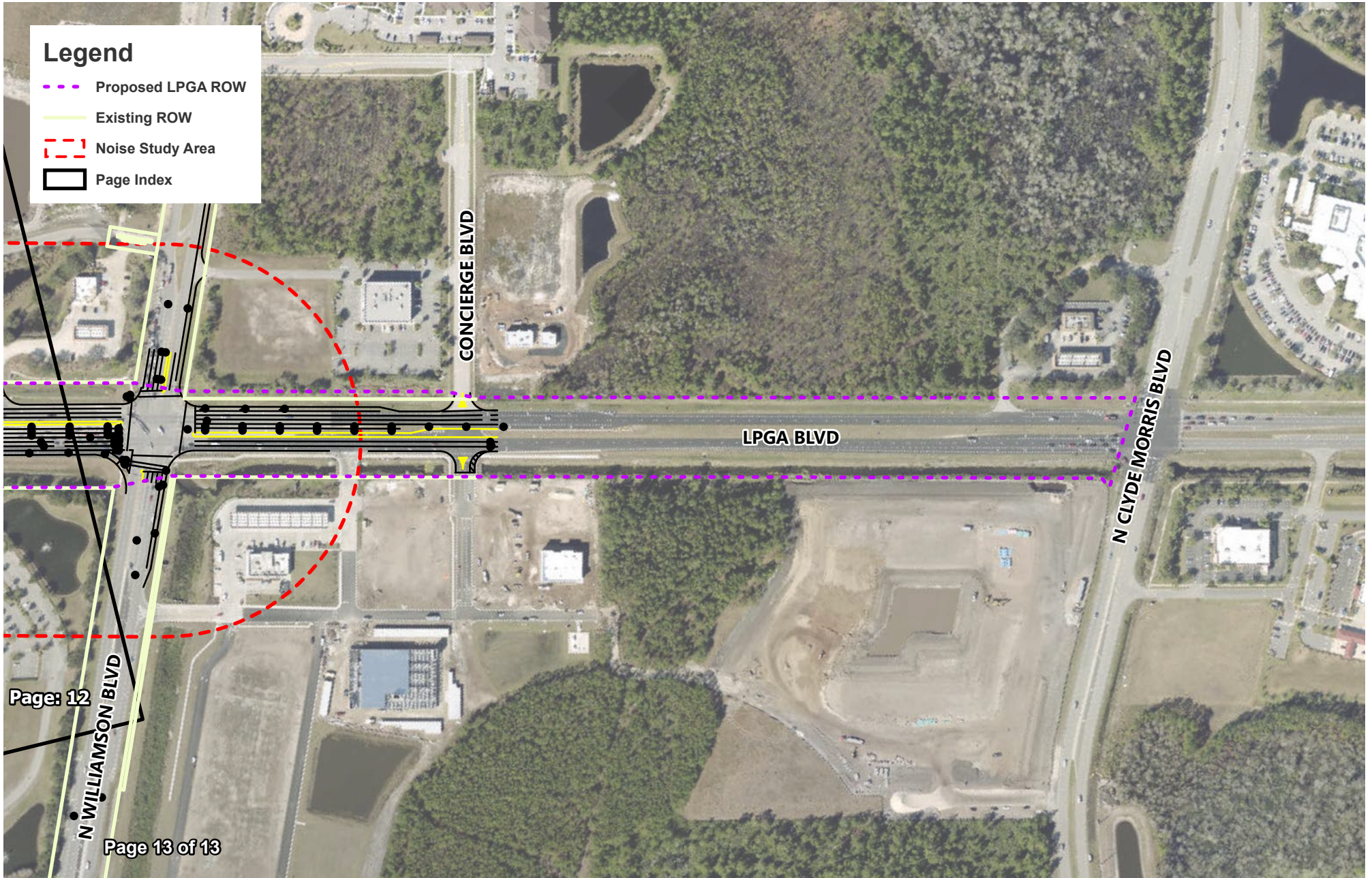
Page: 11

Page: 13



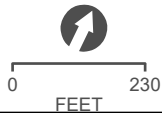
**NOISE ANALYSIS MAP**  
LPGA BOULEVARD FROM US 92 (SR 600) TO WILLIAMSON BOULEVARD PD&E STUDY  
VOLUSIA COUNTY, FLORIDA

FPID: 448456-1-22-01



Page: 12

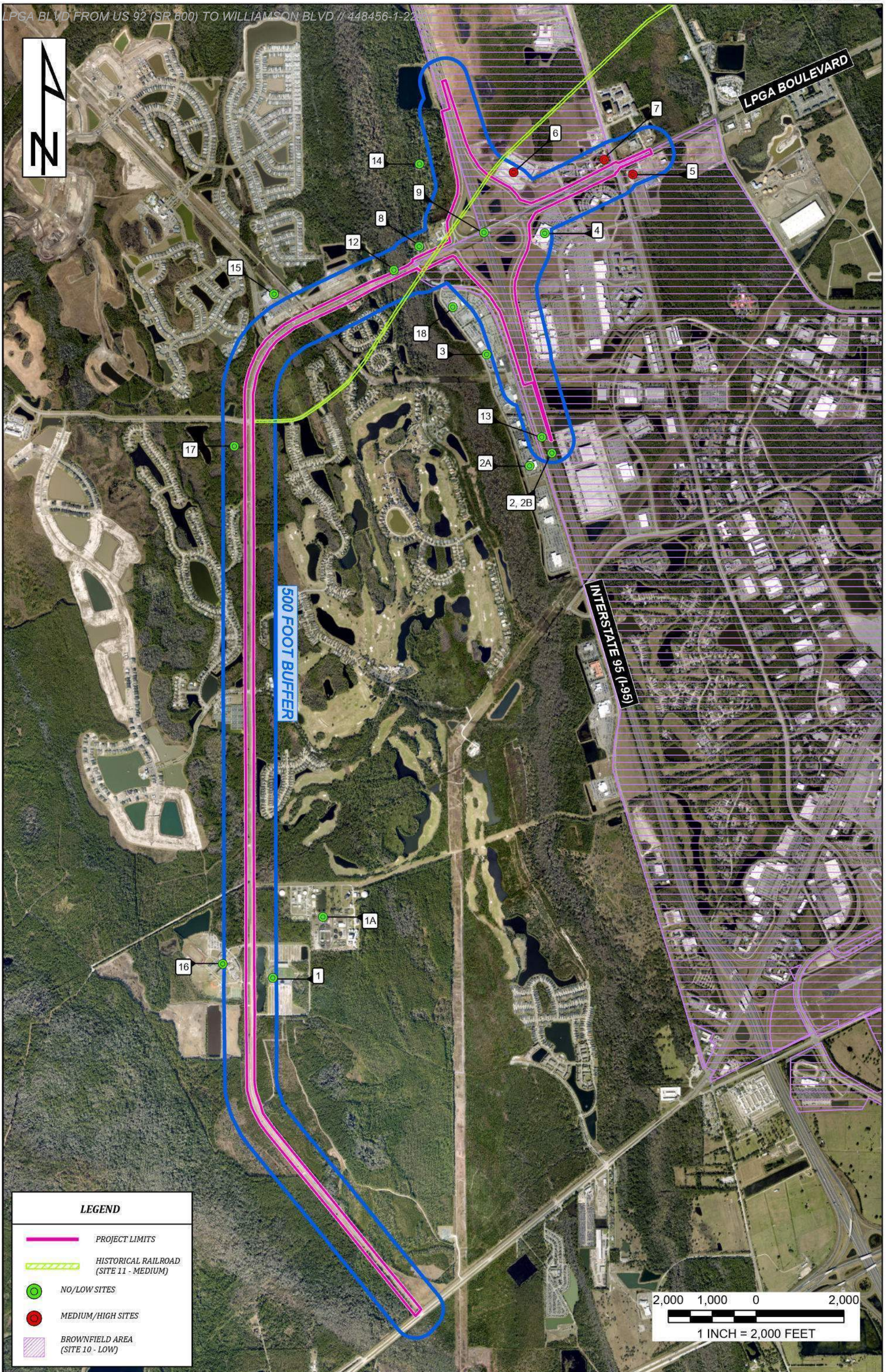
Page 13 of 13



**NOISE ANALYSIS MAP**  
LPGA BOULEVARD FROM US 92 (SR 600) TO WILLIAMSON BOULEVARD PD&E STUDY  
VOLUSIA COUNTY, FLORIDA

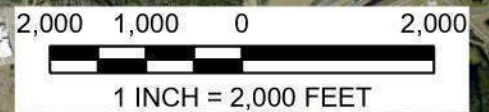
FPID: 448456-1-22-01

LPGA BLVD FROM US 92 (SR 600) TO WILLIAMSON BLVD // 448456-1-22



**LEGEND**

- PROJECT LIMITS
- HISTORICAL RAILROAD (SITE 11 - MEDIUM)
- NO/LOW SITES
- MEDIUM/HIGH SITES
- BROWNFIELD AREA (SITE 10 - LOW)



<p><b>TIERRA</b> GEOGRAPHICAL SYSTEMS ENVIRONMENTAL &amp; ENGINEERING</p> <p>Type 2 Categorical Exclusion</p>	STATE OF FLORIDA DEPARTMENT OF TRANSPORTATION			<b>CONTAMINATION SITE MAP</b>	SHEET NO.
	TIERRA PROJECT NO.	COUNTY	FINANCIAL PROJECT ID	LPGA BOULEVARD FROM US 92 (SR 600) TO WILLIAMSON BOULEVARD PD&E STUDY	
	5511-21-038E	VOLUSIA COUNTY	448456-1-22-01		
				Page 183 of 249	