



**Welcome**

**LPGA Boulevard PD&E Study  
From U.S. 92 to Williamson Boulevard**

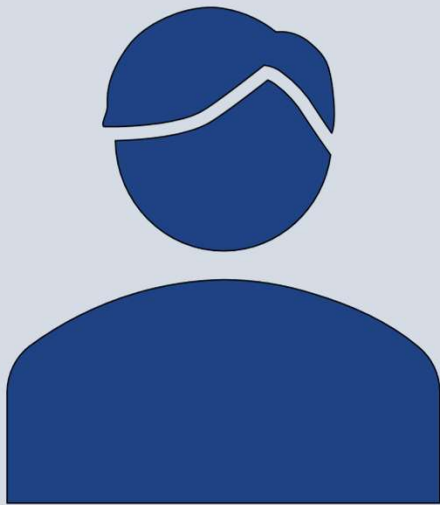
Financial Project Identification (FPID) No.: 448456-1

**Alternatives Open House**

February 28, 2023



# INTRODUCTION



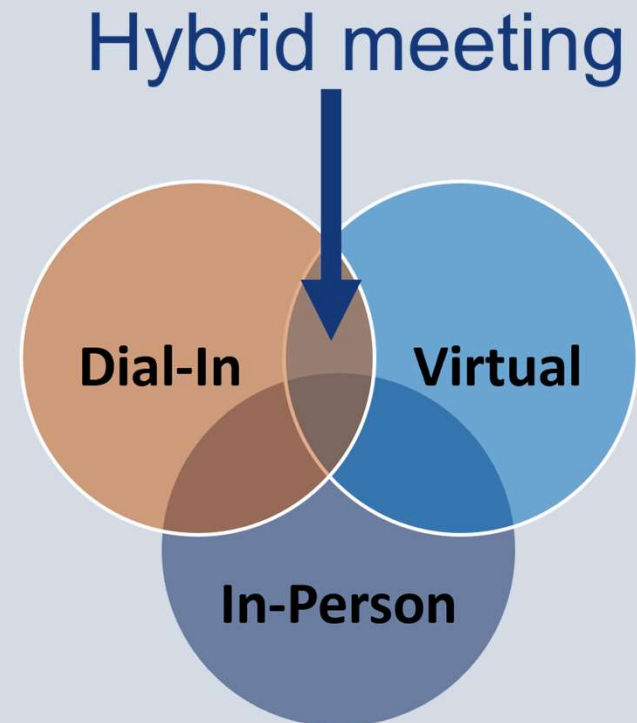
Jesse Blouin, AICP  
FDOT Project Manager  
719 S. Woodland Blvd., MS 501  
DeLand, FL 32720-6834  
Jesse.Blouin@dot.state.fl.us  
386-943-5167



# About the Meeting



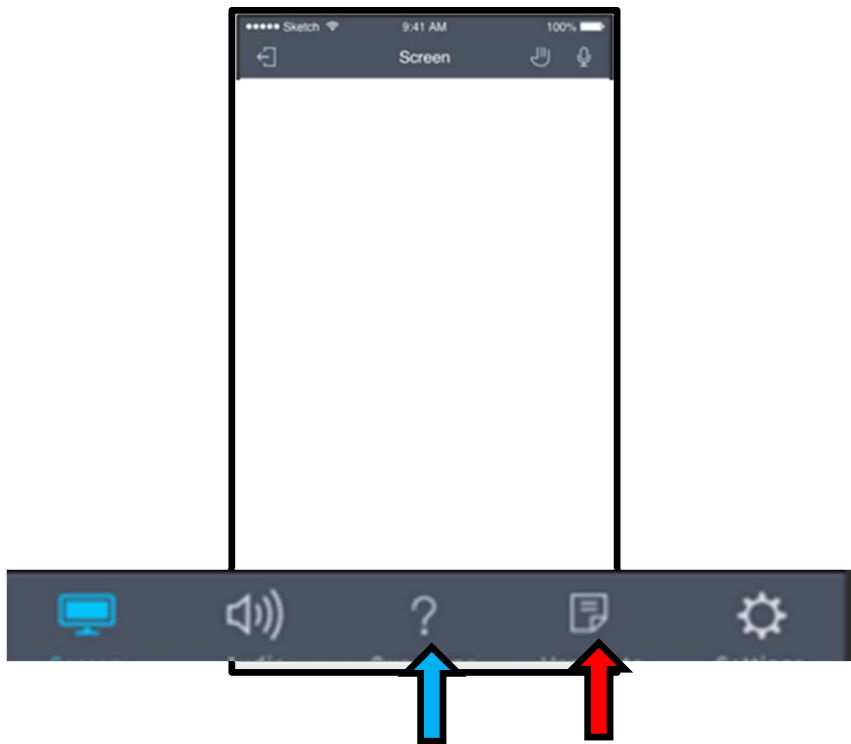
- This public meeting is being conducted in a hybrid format
- Dial-in attendees not using the GoToWebinar app are “listen-only”
- A copy of the presentation can be found on the project website at: [CFLRoads.com/project/448456-1](http://CFLRoads.com/project/448456-1)



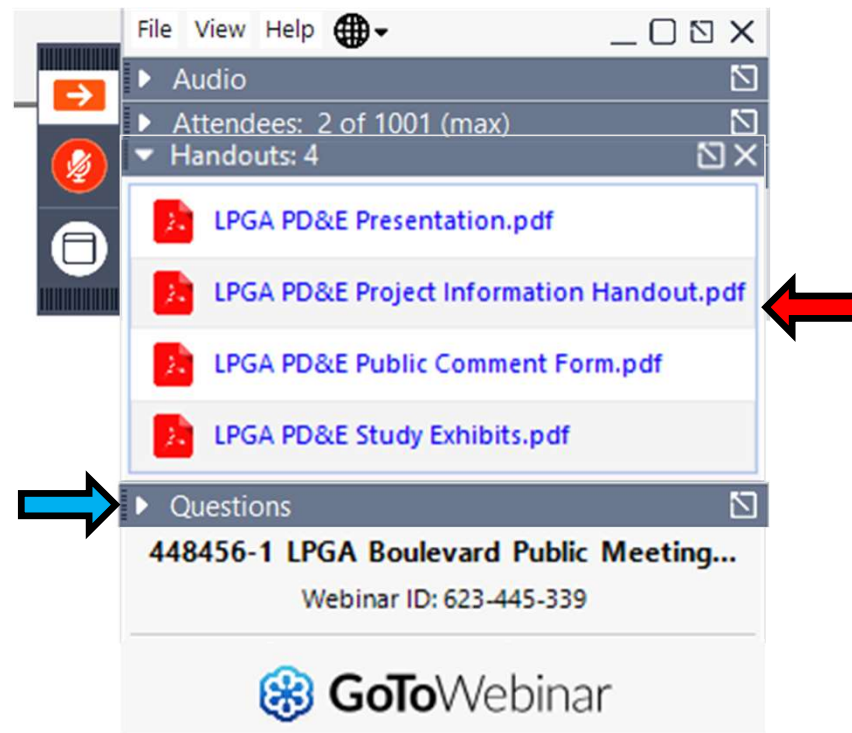
# GoToWebinar Control Panel



## Mobile



## Desktop



# To Report a Technical Issue ...



Type a message in  
the question box on  
the GoToWebinar  
control panel

Send an email to:  
[Stephen.Alianiello@  
hdrinc.com](mailto:Stephen.Alianiello@hdrinc.com)






Call 407-242-9783



# Agenda



-  Explain project goals
-  Present proposed improvements
-  Obtain your input



# Title VI Compliance



*Public participation is solicited without regard to race, color, national origin, age, sex, religion, disability, or family status. Persons wishing to express concerns relative to FDOT compliance with Title VI may do so by contacting:*

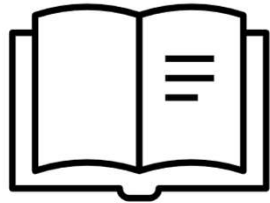
*All inquiries or concerns will be handled according to FDOT procedure and in a prompt and courteous manner.*

Melissa McKinney  
District Five Title VI Coordinator  
719 S. Woodland Blvd., MS 501  
DeLand, FL 32720-6834  
386-943-5077  
[Melissa.McKinney@dot.state.fl.us](mailto:Melissa.McKinney@dot.state.fl.us)

Stefan Kulakowski, FCCM, CPM  
State Title VI Coordinator  
Florida Department of Transportation  
Equal Opportunity Office  
605 Suwannee St., MS 65  
Tallahassee, FL 32399-0450  
850-414-4742  
[stefan.kulakowski@dot.state.fl.us](mailto:stefan.kulakowski@dot.state.fl.us)



# Public Notice



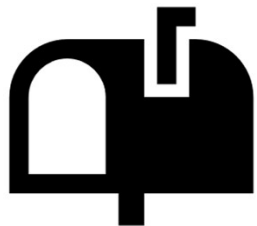
Florida Administrative  
Register



FDOT's public notices &  
project webpage



Newspaper



Property owner/tenant  
letters



Email to project  
contacts list



Hand delivery



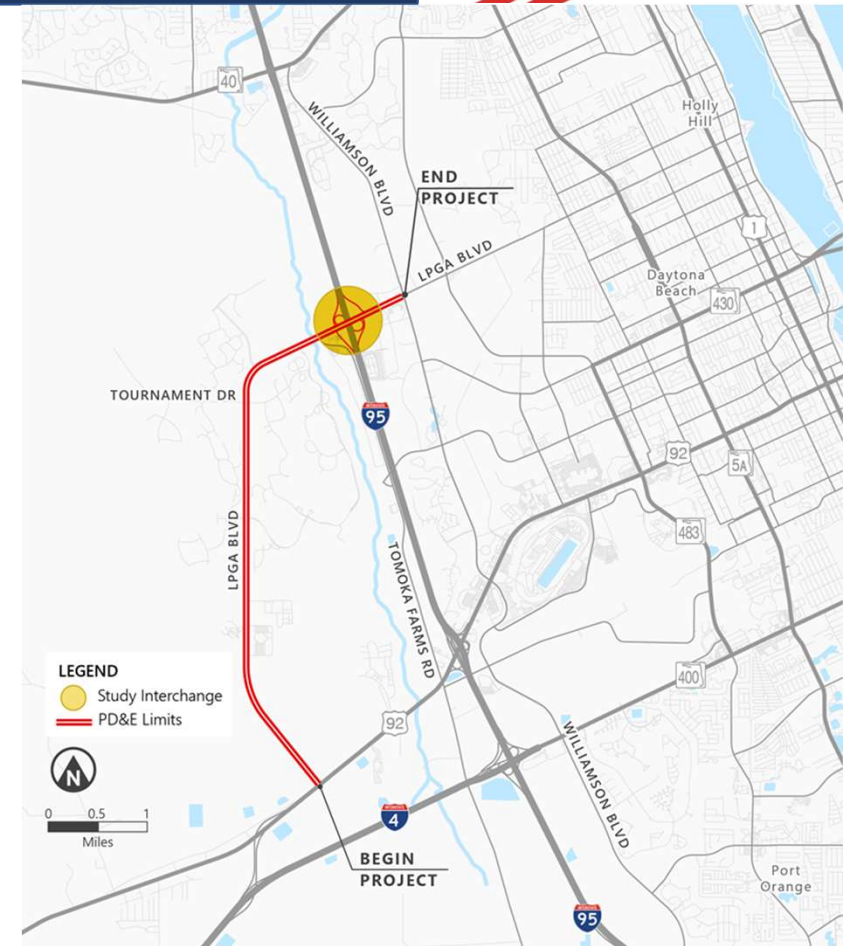
## National Environmental Policy Act (NEPA)

The environmental review, consultation, and other actions required by applicable federal environmental laws for this project are being, or have been, carried out by FDOT pursuant to 23 U.S.C. § 327 and a Memorandum of Understanding dated May 26, 2022, and executed by the Federal Highway Administration and FDOT.

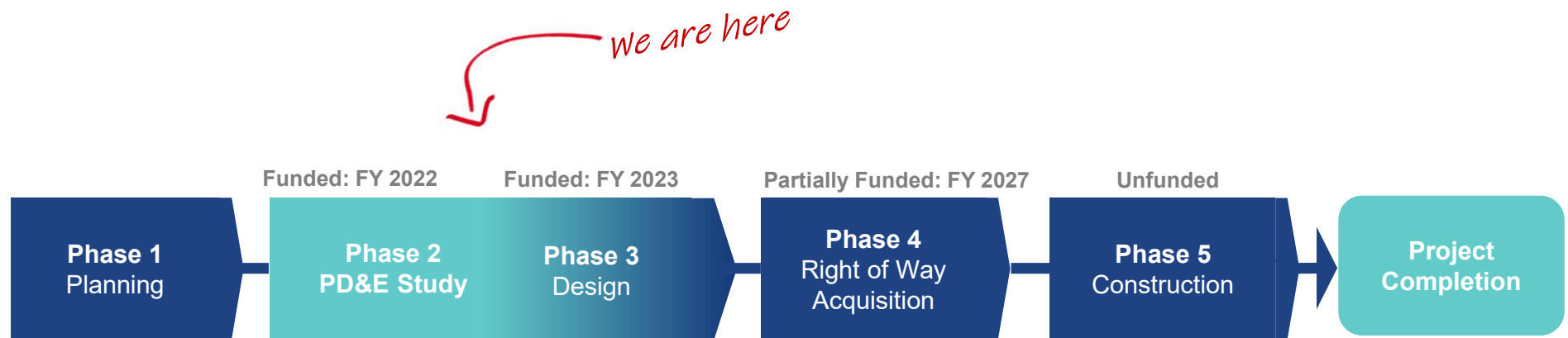
# Project Location



- Daytona Beach, Volusia County
- LPGA Boulevard from U.S. 92 to Williamson Boulevard
- Tomoka River Bridge
- I-95 at LPGA Boulevard interchange



# Project Development Process



The PD&E Study is scheduled for completion in Fall 2023

# Project's Purpose and Need



**Accommodate** future transportation demand, including bicyclists and pedestrians



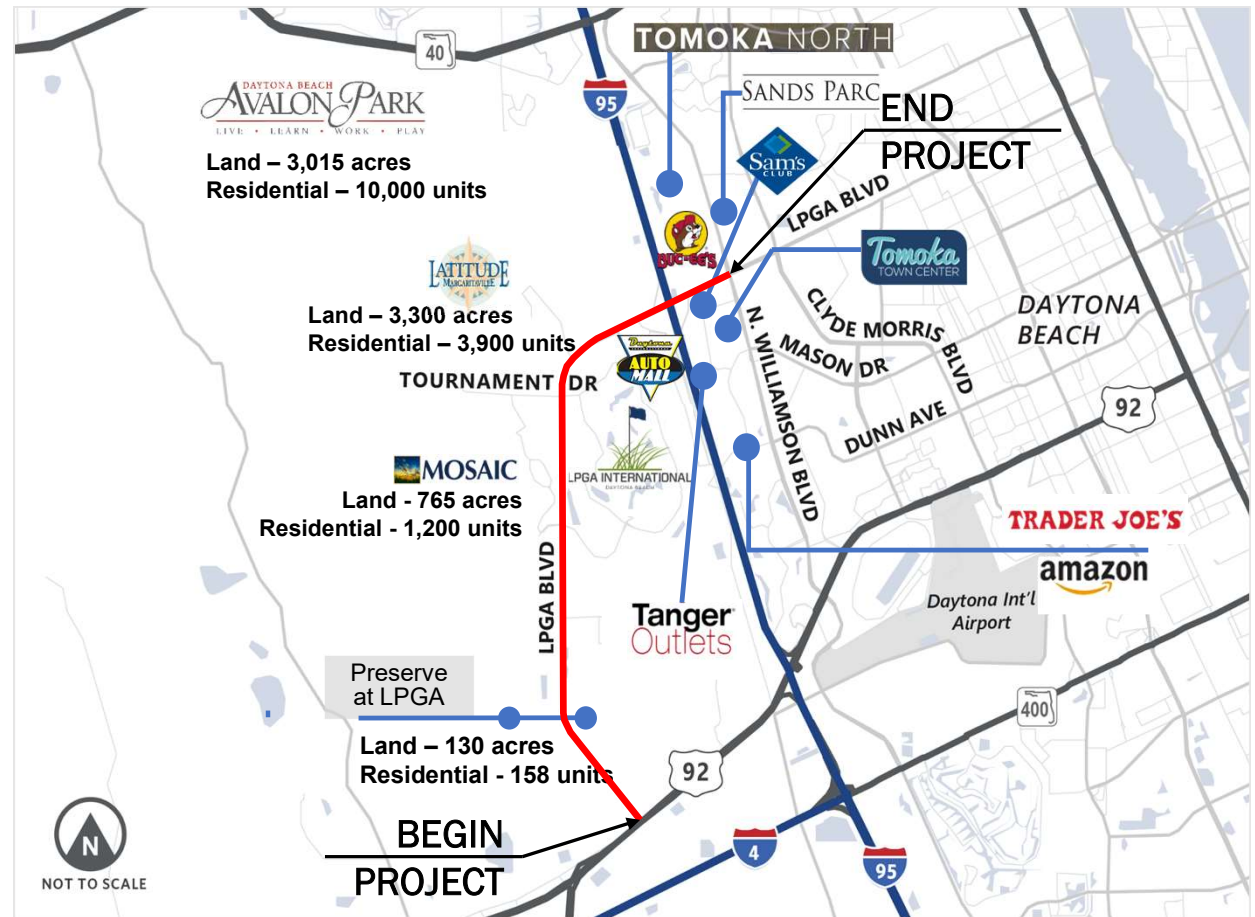
**Enhance** safety along LPGA Boulevard and at the I-95 interchange



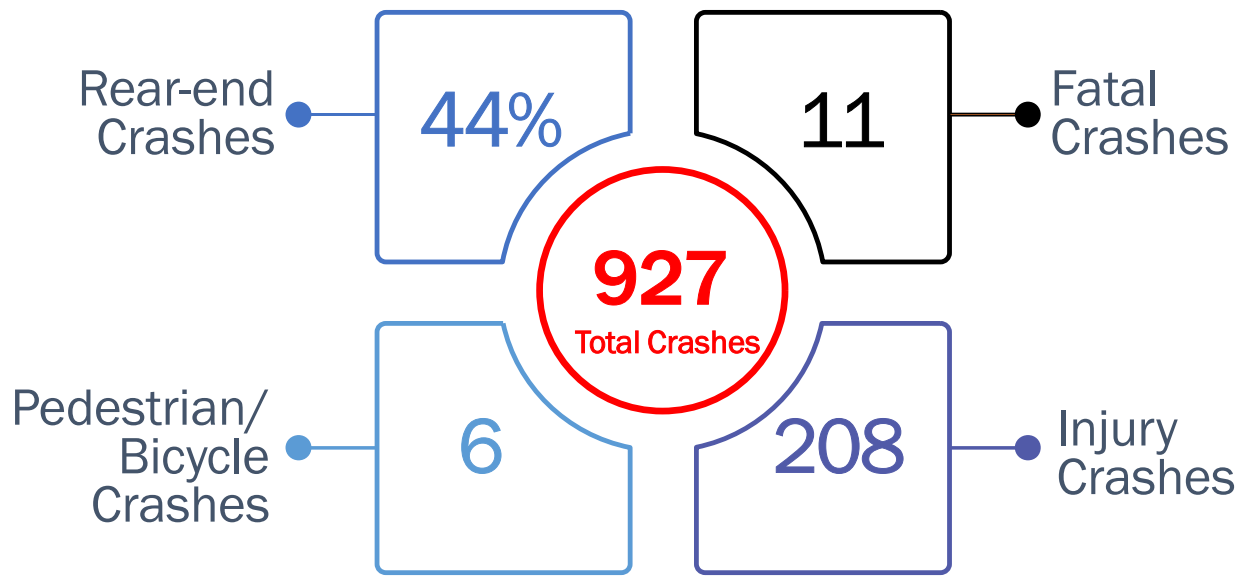
# Substantial Traffic Growth



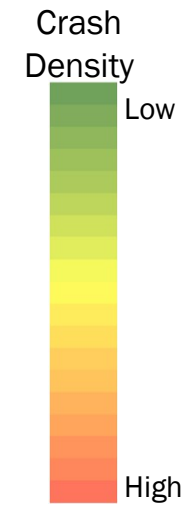
The project area is experiencing unprecedented growth in recent years



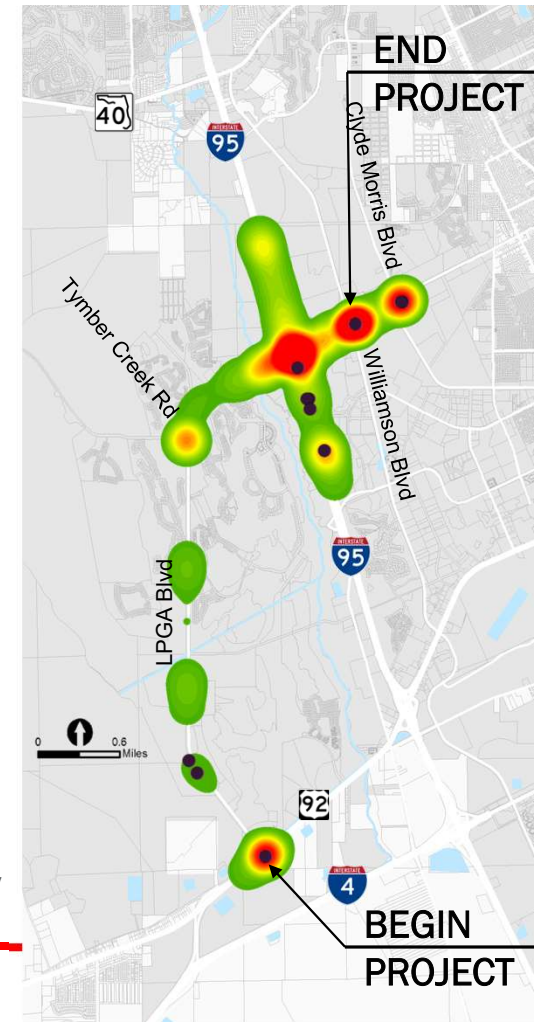
# Existing Safety Conditions



January 1, 2015 - December 31, 2019, CAR Online and Signal 4 database



● Fatality



# Alternatives Being Evaluated



## No-Build Alternative

- Maintains existing number of lanes and the interchange
- Does not address traffic and safety issues

## Build Alternative

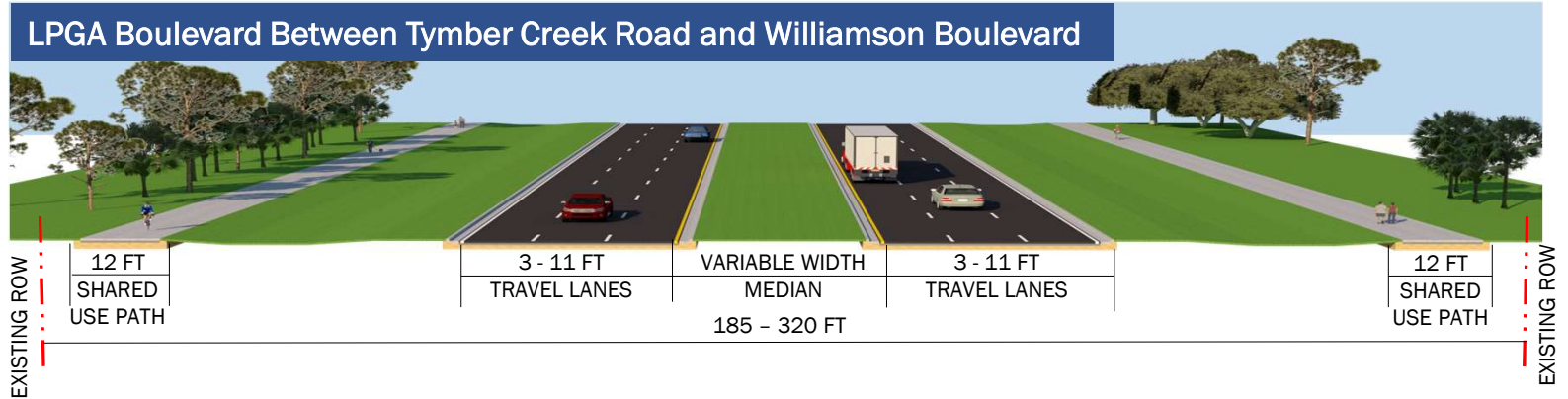
- Widen LPGA Boulevard
- Add bicycle/pedestrian features
- Replace and widen the Tomoka River bridge
- Modify the I-95 interchange



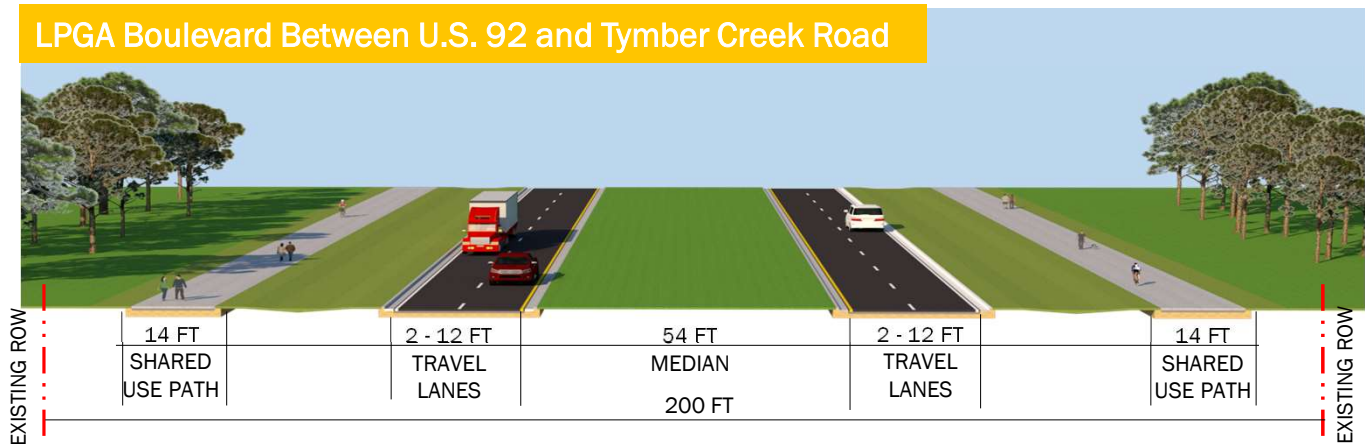
# Corridor Improvements



## LPGA Boulevard Between Timber Creek Road and Williamson Boulevard



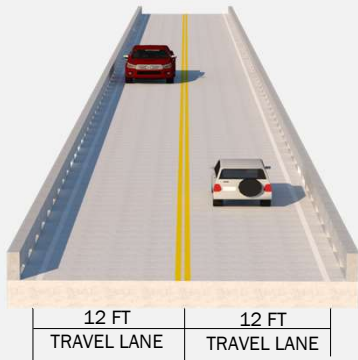
## LPGA Boulevard Between U.S. 92 and Timber Creek Road



# Tomoka River Bridge Improvements

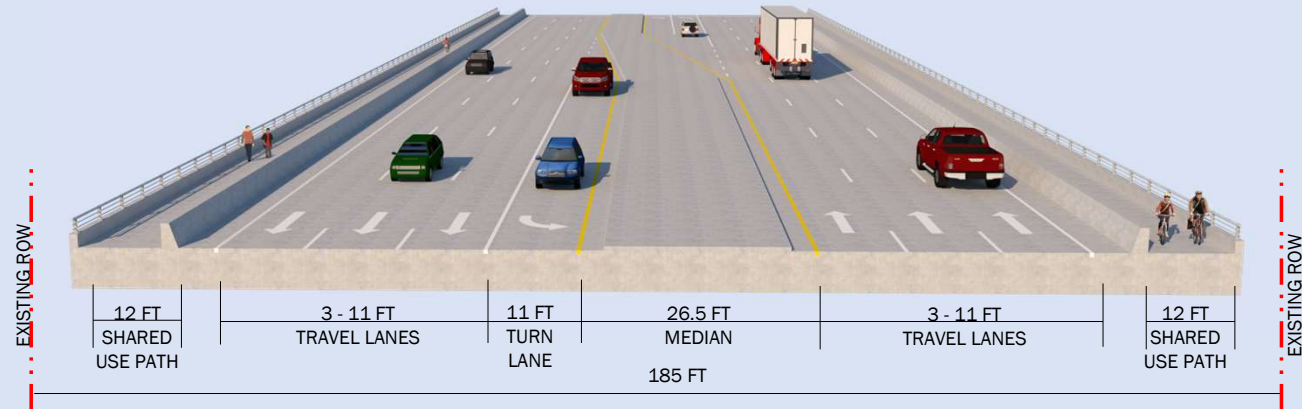


## Existing Bridge



- 250-foot bridge
- Two lanes
- No bicyclist and pedestrian accommodation

## Proposed Bridge



- 340-foot new bridge
- Three 11-foot travel lanes in each direction
- Left turn lanes
- 12-foot shared use paths on both sides
- Two wildlife paths to enhance wildlife connectivity



# Intersection Evaluation



Modern  
Roundabout



Restricted Crossing  
U-Turn (RCUT)



Thru-Cut

Image Source: FHWA

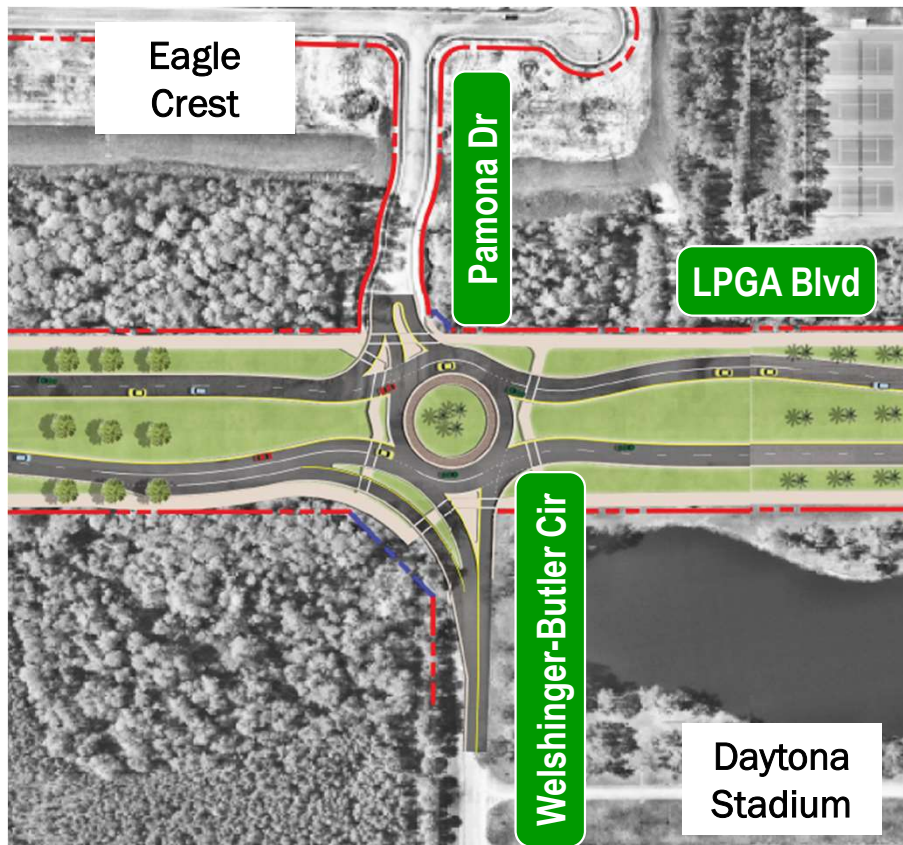


**LPGA BOULEVARD**  
**PD&E STUDY**

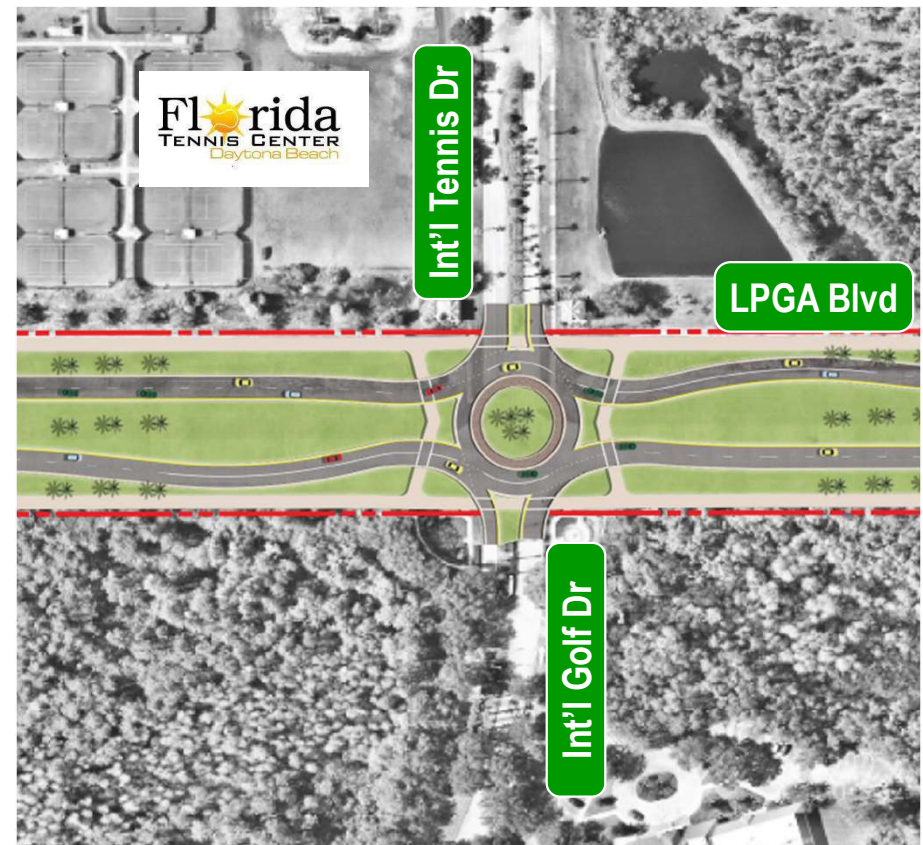
From U.S. 92 to Williamson Boulevard  
Volusia County

FPID No. 448456-1

# Modern Roundabouts

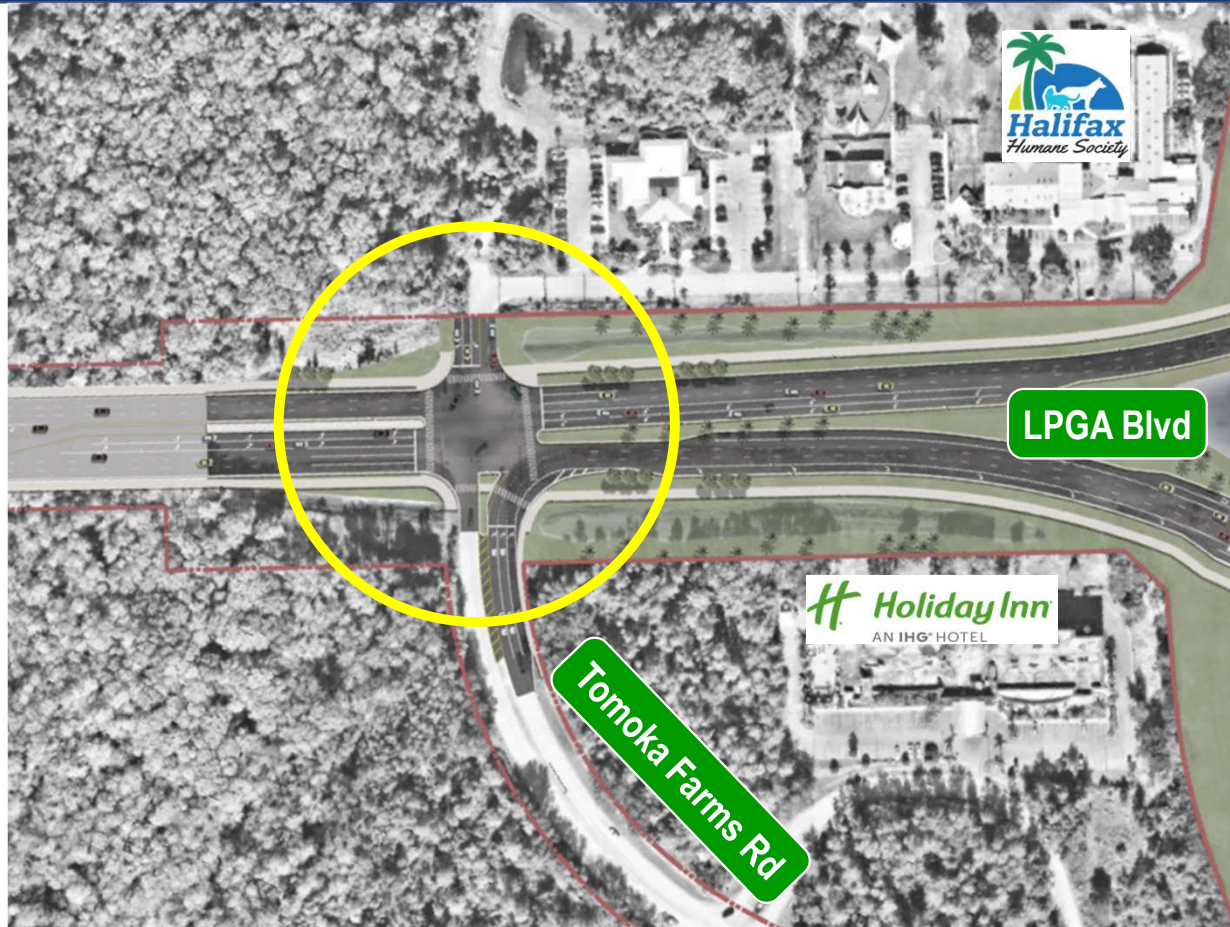


Welshinger-Butler Circle South



International Golf Drive

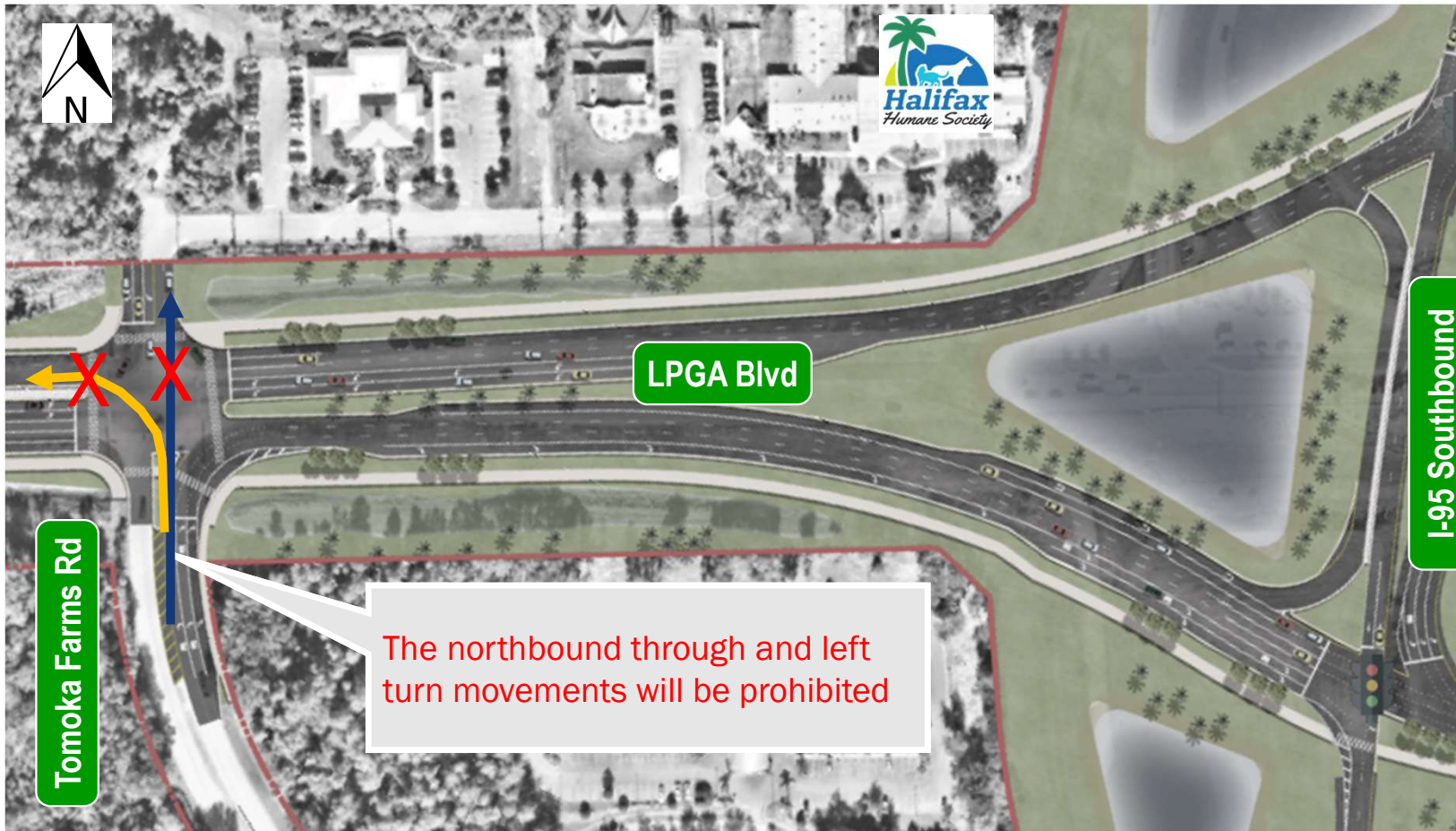
# RCUT Intersection



Tomoka Farms Road



# Tomoka Farms Road Intersection

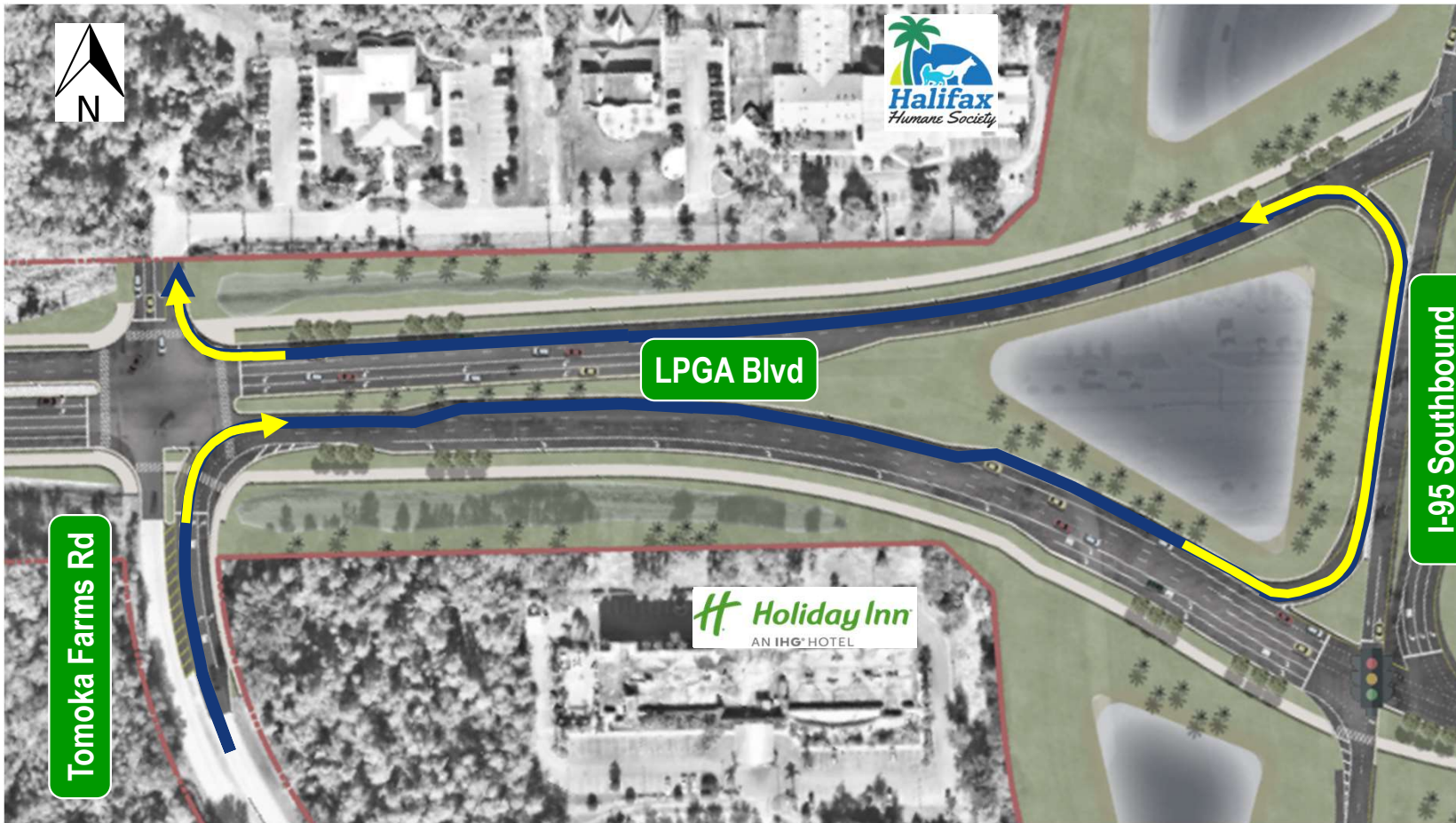


## LEGEND

- ← Left Turn movement (Northbound left)
- ← Through movement (Northbound through)

**RCUT INTERSECTION**

# Tomoka Farms Road Intersection



## LEGEND

- ← Vehicles continuing north (Northbound through)

**RCUT  
INTERSECTION**



**LPGA BOULEVARD  
PD&E STUDY**

From U.S. 92 to Williamson Boulevard  
Volusia County

FPID No. 448456-1

# Tomoka Farms Road Intersection



## LEGEND

- ← Vehicle going west to U.S. 92 (Northbound left)

**RCUT INTERSECTION**

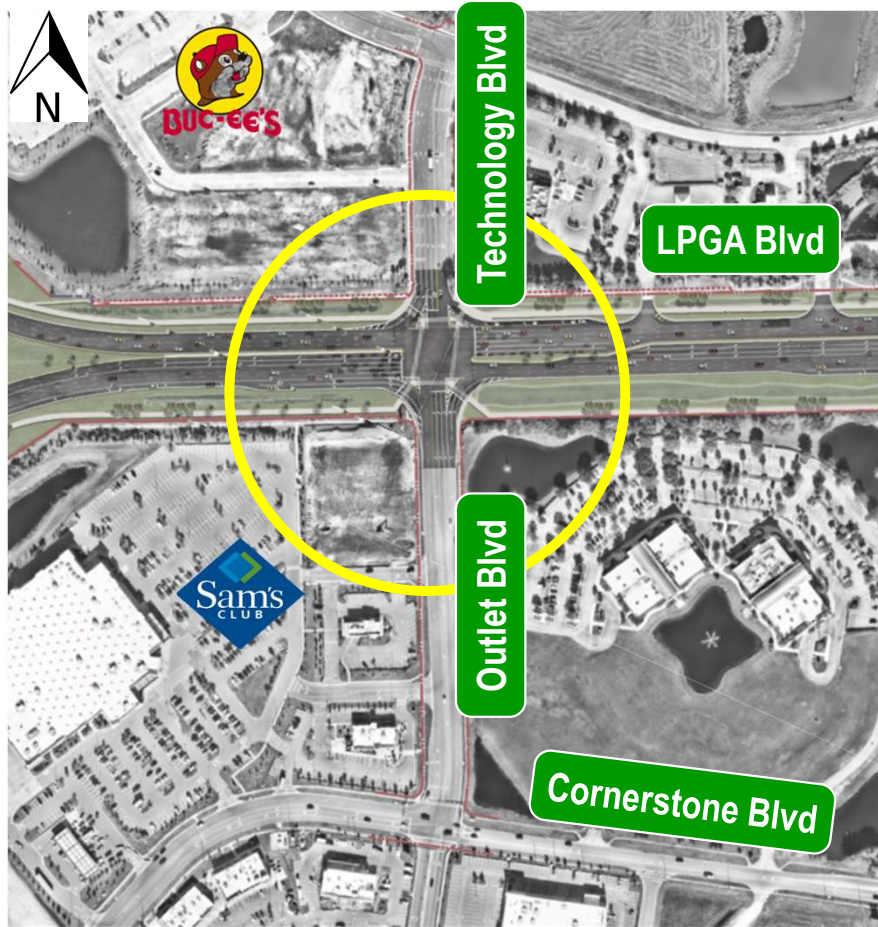


**LPGA BOULEVARD  
PD&E STUDY**

From U.S. 92 to Williamson Boulevard  
Volusia County

FPID No. 448456-1

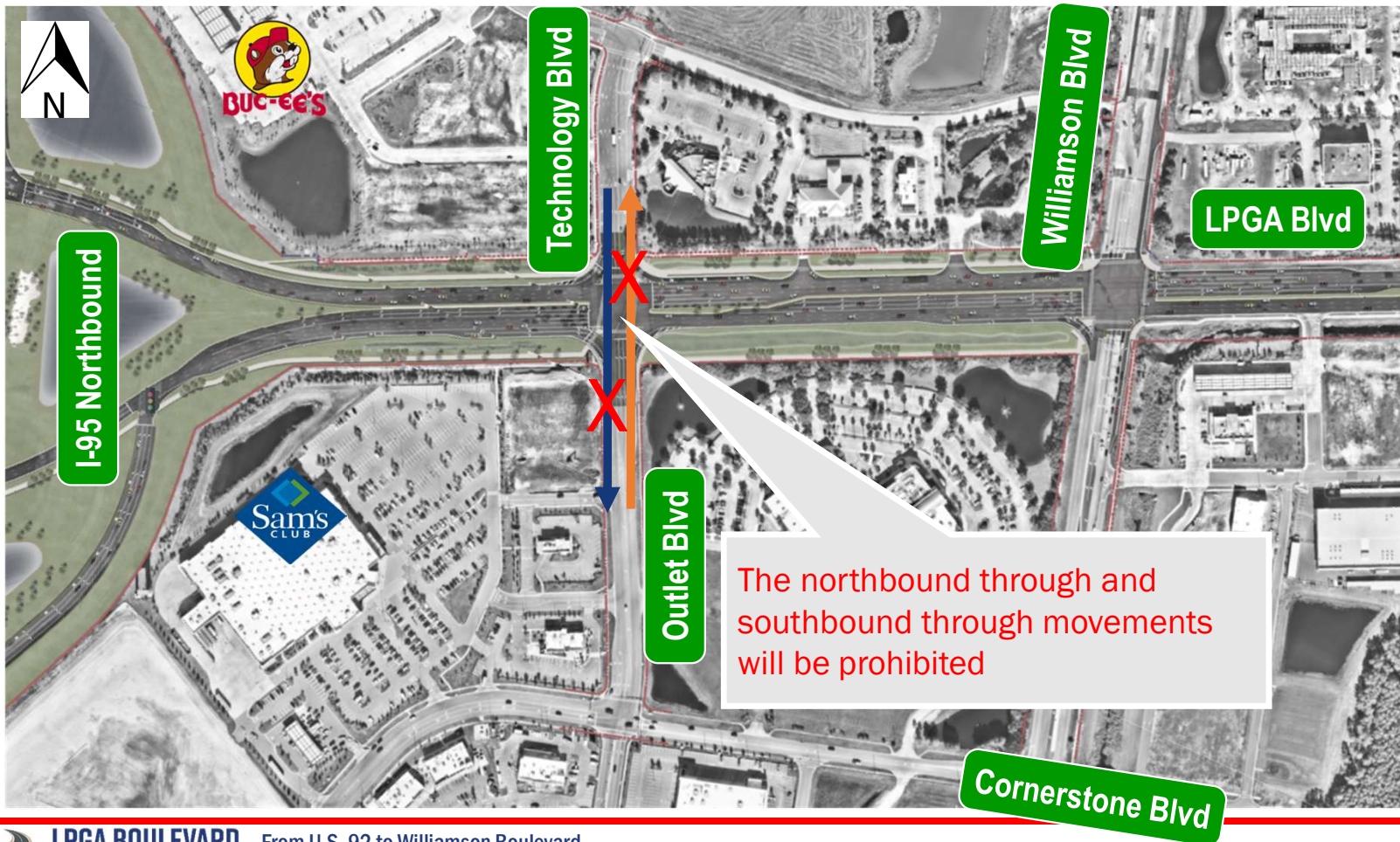
# Thru-Cut Intersection



Outlet Blvd/Technology Blvd



# Outlet / Technology Intersection



## LEGEND

- ← Northbound through
- ← Southbound through

**THRU-CUT  
INTERSECTION**

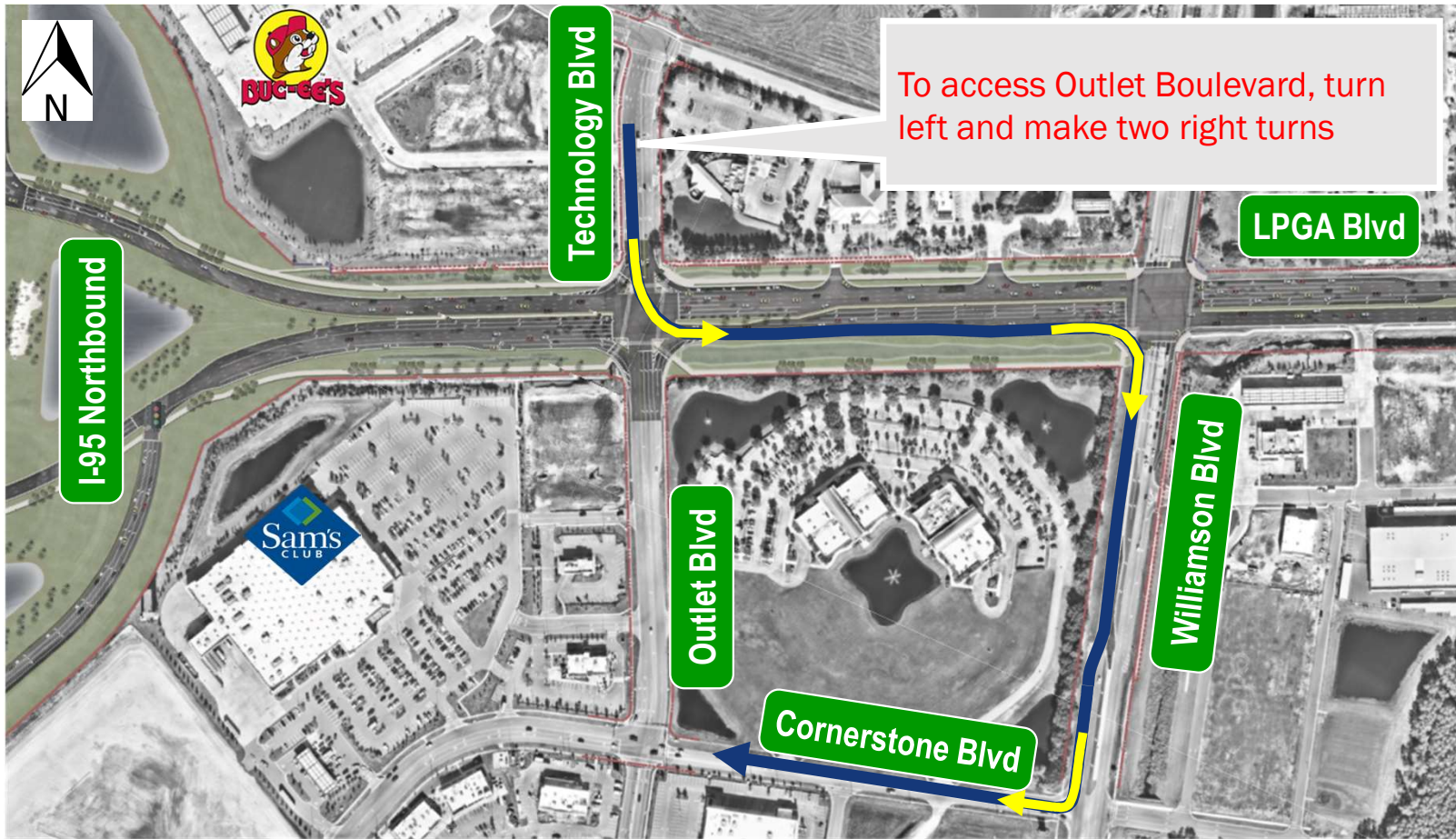


**LPGA BOULEVARD  
PD&E STUDY**

From U.S. 92 to Williamson Boulevard  
Volusia County

FPID No. 448456-1

# Outlet / Technology Intersection



## LEGEND

- ← Southbound movement to Outlet Boulevard

**THRU-CUT INTERSECTION**

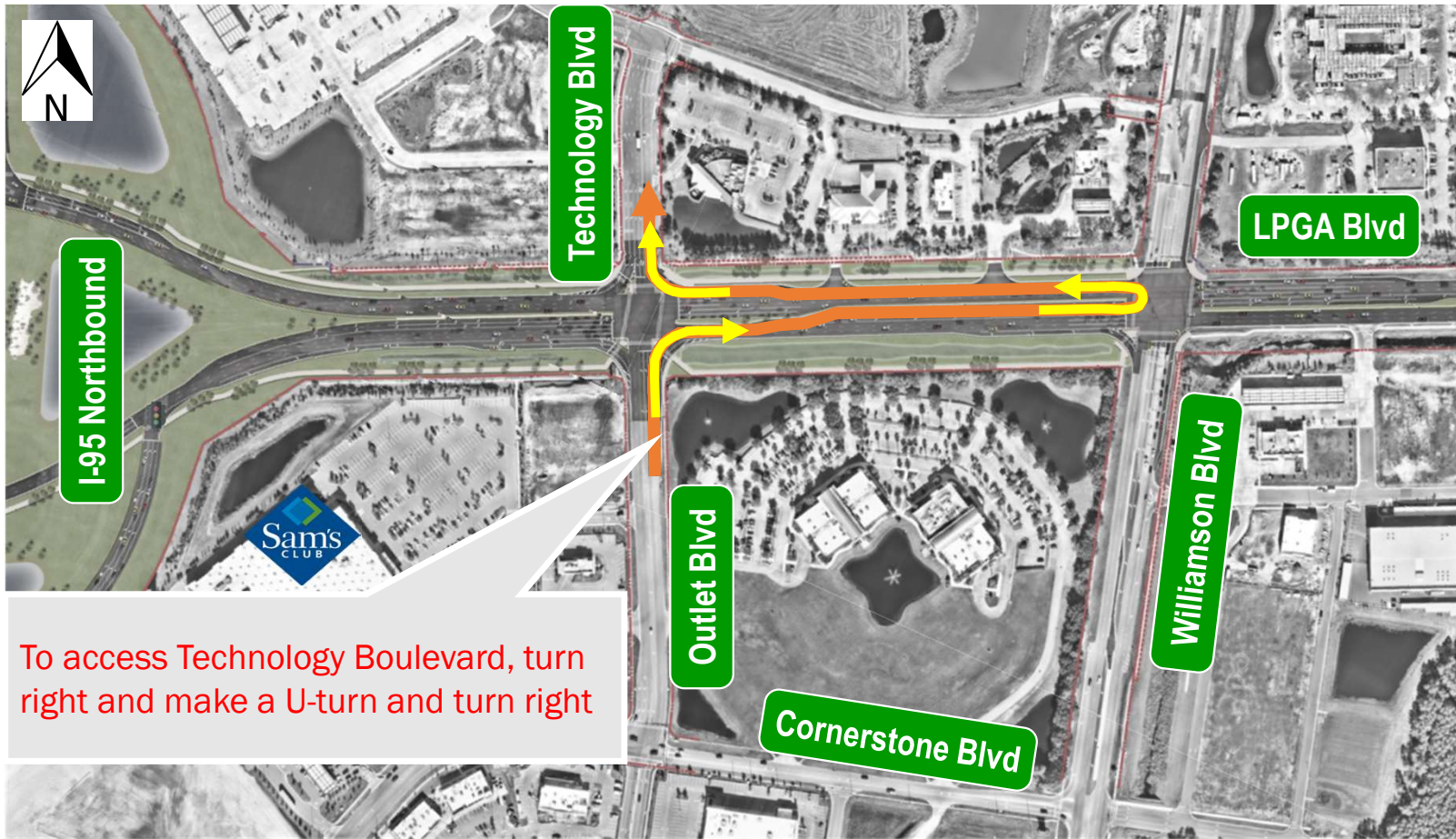


**LPGA BOULEVARD  
PD&E STUDY**

From U.S. 92 to Williamson Boulevard  
Volusia County

FPID No. 448456-1

# Outlet / Technology Intersection



To access Technology Boulevard, turn right and make a U-turn and turn right

## LEGEND

← Northbound movement to Technology Boulevard

**THRU-CUT INTERSECTION**



**LPGA BOULEVARD  
PD&E STUDY**

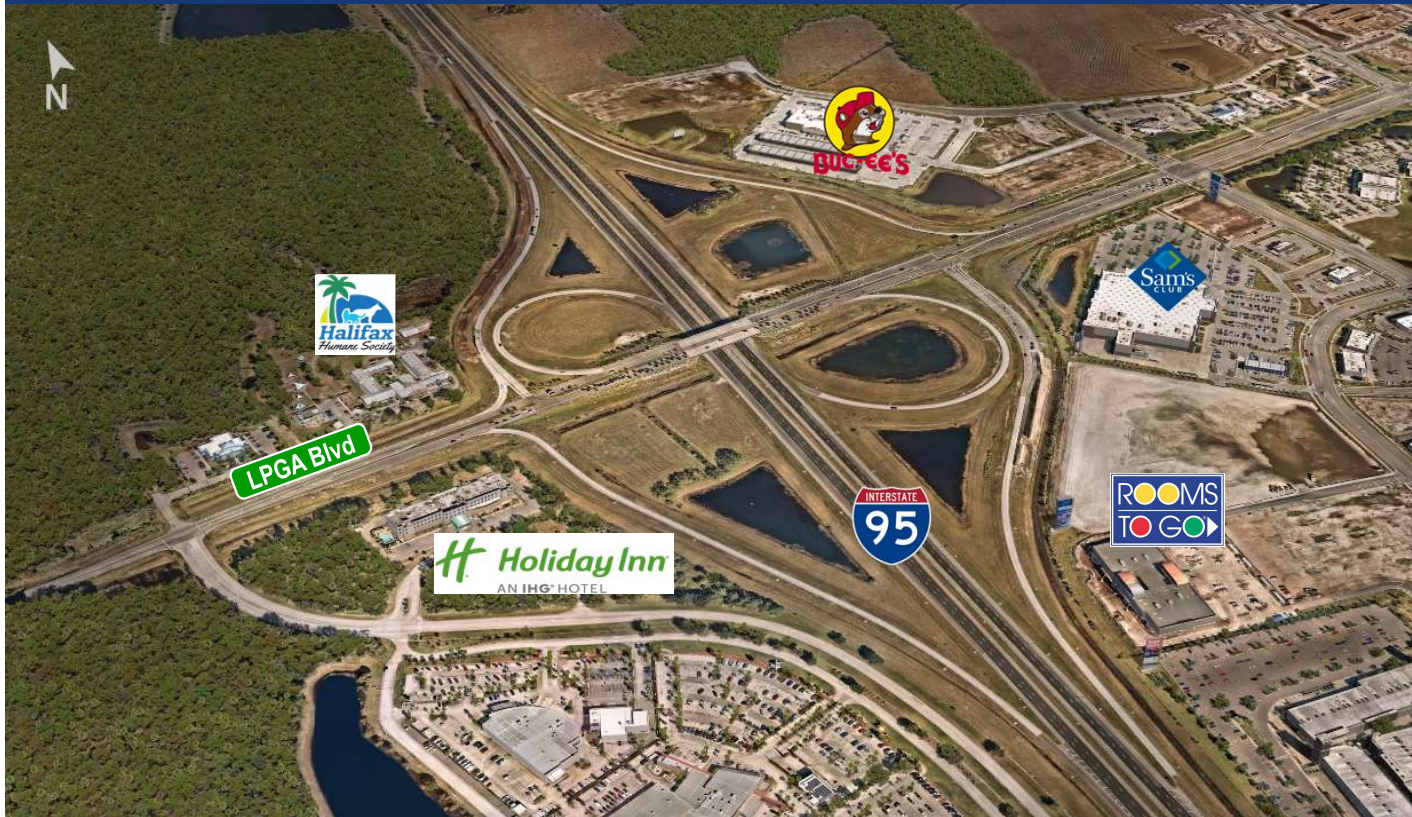
From U.S. 92 to Williamson Boulevard  
Volusia County

FPID No. 448456-1

# Interchange Improvements



## Existing I-95 Interchange



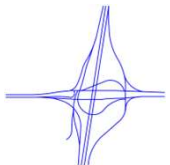
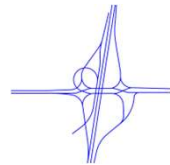
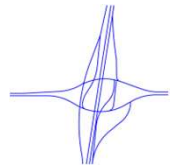
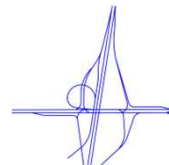
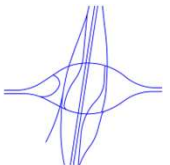
## Partial Cloverleaf Interchange

- Limited capacity
- Safety issues



# I-95 Interchange Evaluation



	 Grade Separated Modified Diamond	 Diverging Diamond Interchange	 Signalized Turbine Interchange	 Echelon Corridor	 Echelon/Turbine Hybrid
Right of Way Needs	●	●	●	◐	◐
Congestion Reduction	◐	◐	◐	●	◐
Construction Cost	◐	◐	◐	○	◐
Future Expandability	●	○	◐	○	◐
Constructability	◐	◐	◐	○	◐
Improved Safety	●	◐	◐	●	◐

Poor	Fair	Average	Good	Best
○	◐	◐	◐	●

# Signalized Turbine Interchange



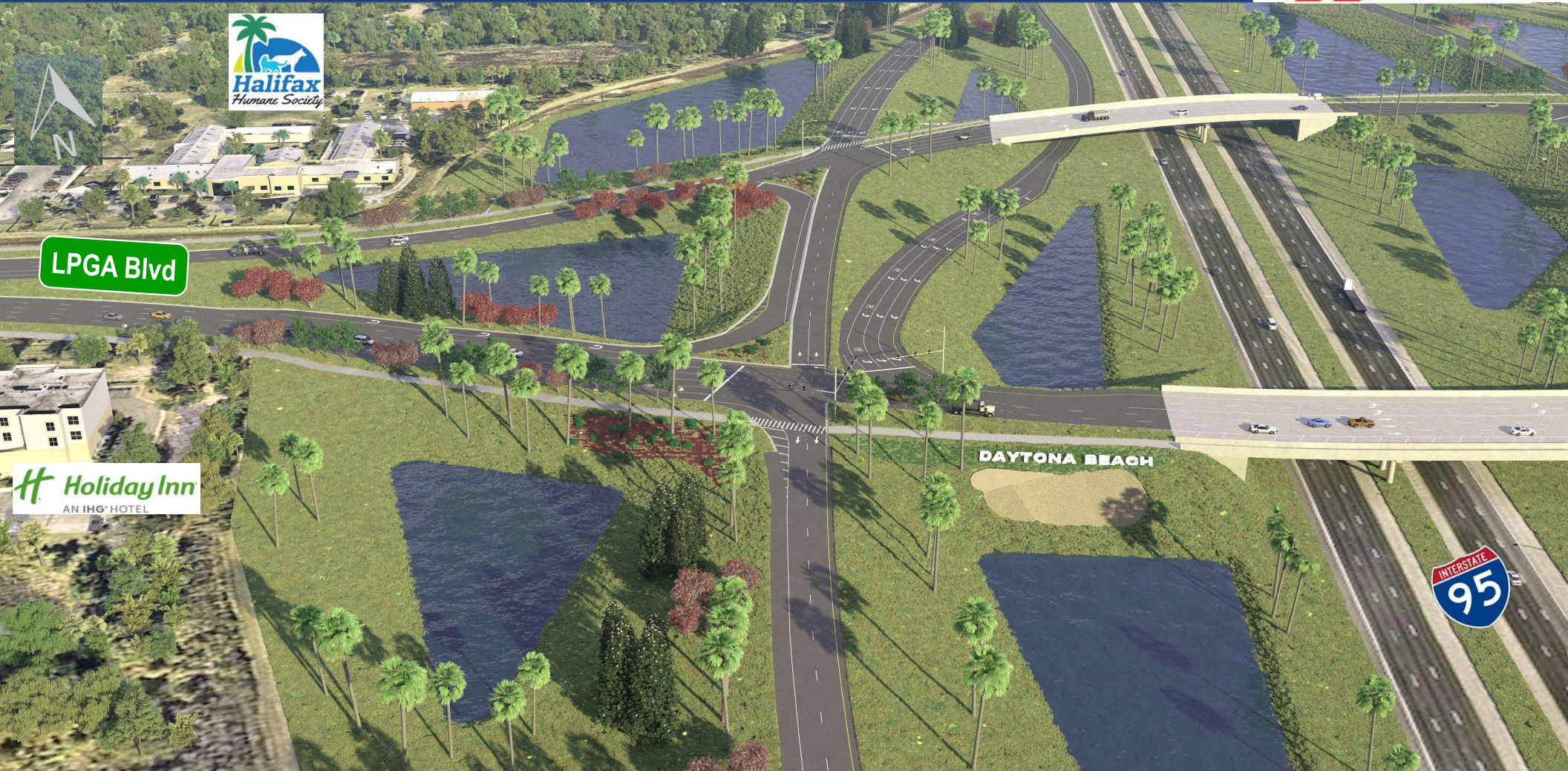
# Signalized Turbine Interchange



# Signalized Turbine Interchange



# Signalized Turbine Interchange



LPGA Blvd

Holiday Inn  
AN IHG HOTEL

DAYTONA BEACH



# Signalized Turbine Interchange

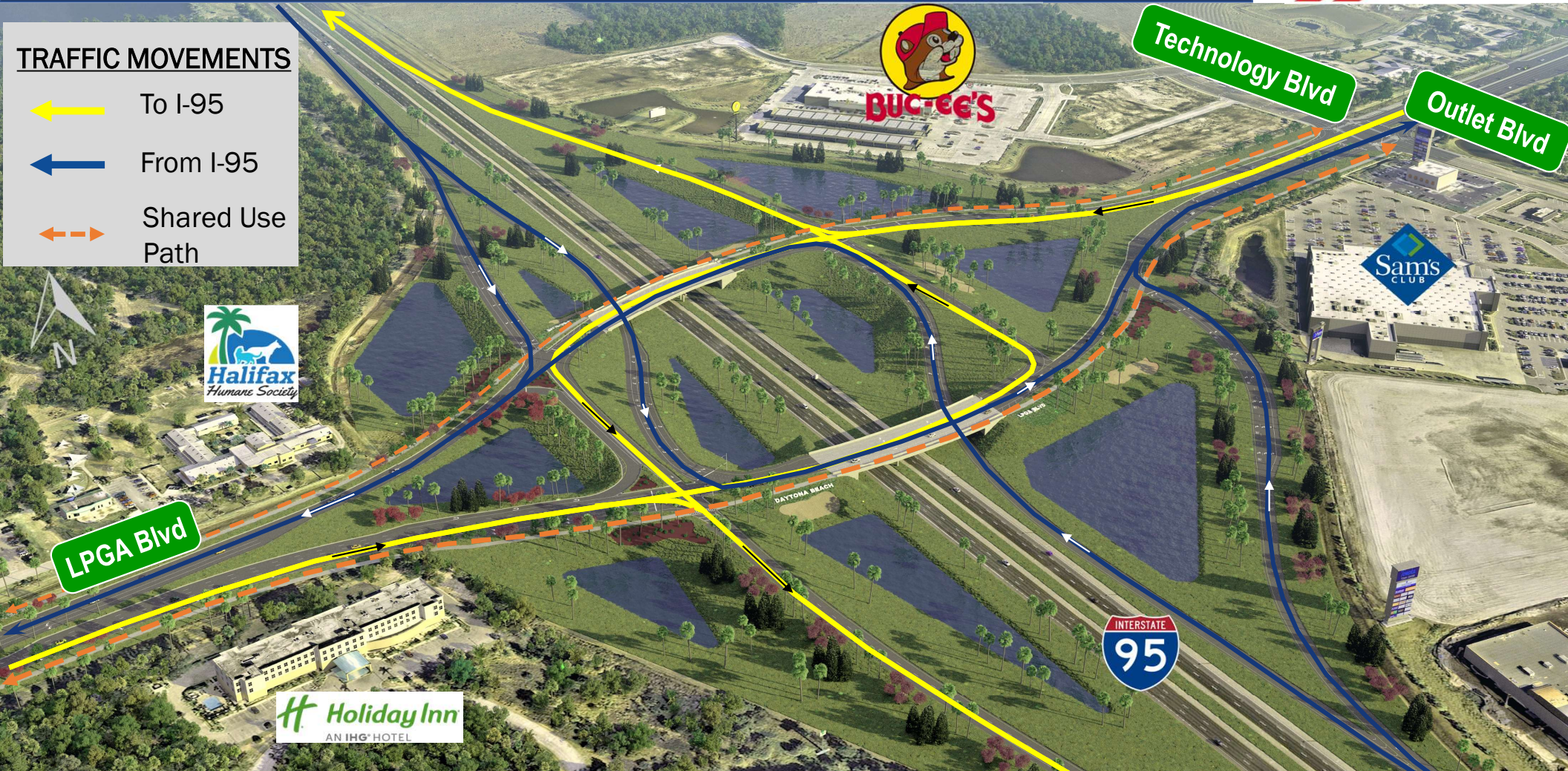


# Signalized Turbine Interchange



## TRAFFIC MOVEMENTS

-  To I-95
-  From I-95
-  Shared Use Path



# Environmental Evaluation



## Social and Economic

- Businesses and residences
- Community facilities
- Multimodal



## Natural

- Floodplains
- Wetlands and water quality
- Protected species



## Cultural

- Historic sites
- Archeological sites
- Public parks



## Physical

- Contamination
- Noise
- Utilities

# Key Environmental Features



Tiger Bay State Forest



Recreational Areas



Wetlands and Floodplains



Tomoka River



Protected Species



Halifax Humane Society



Aesthetics



Community Facilities



# Drainage and Stormwater



## Stormwater Ponds

- Pond locations
- Water quality treatment

## Floodplain

- Floodplain impacts and mitigation areas



# Alternatives Evaluation Matrix



Evaluation Criteria	No Build Alternative	Build Alternative from U.S. 92 to Williamson Blvd
<b>Purpose and Need</b>		
Accommodate Future Travel Demand	No	Yes
Improve Safety	No	Yes
<b>Right of Way Impacts</b>		
Number of Parcels Impacted	0	4
Number of Residential Relocations	0	0
Number of Business Relocations	0	0
<b>Potential Environmental Impacts</b>		
Protected Species	None	1
Archaeological Potential	None	Low
Historic Sites	None	None
Contamination Sites	None	1
Wetlands (Acres)	None	42
Floodplains (Acres)	None	0.16
Public Lands (Acres)	None	0
Noise Sensitive Sites	None	135
<b>Estimated Costs in Millions (Present Day Costs)</b>		
Right of Way	\$0	\$10.7
Wetland Mitigation	\$0	\$1.9
Construction Engineering and Inspection	\$0	\$13.4
Construction	\$0	\$ 191.9

Project costs are subject to change

# PD&E Study Schedule



PROJECT MILESTONE/ ACTIVITY	2021	2022				2023			
	October - December	January - March	April - June	July - September	October - December	January - March	April - June	July - September	October - December
Begin Study									
Data Collection	[Dark Blue Bar]								
Project Advisory Group Meetings									
Analyze and Refine Viable Alternatives		[Dark Blue Bar]							
Alternatives Open House									
Refine and Select the Recommended Alternative							[Dark Blue Bar]		
Prepare Documents							[Dark Blue Bar]		
Public Hearing									
PD&E Study Approval									
Public/Stakeholder Engagement	[Dark Blue Bar]								

Today's Alternatives Open House



Note: The schedule is tentative and subject to change

# Get Involved



In Person



Virtually



Email or Mail



Telephone



# Ways to Submit Comments



## In-person



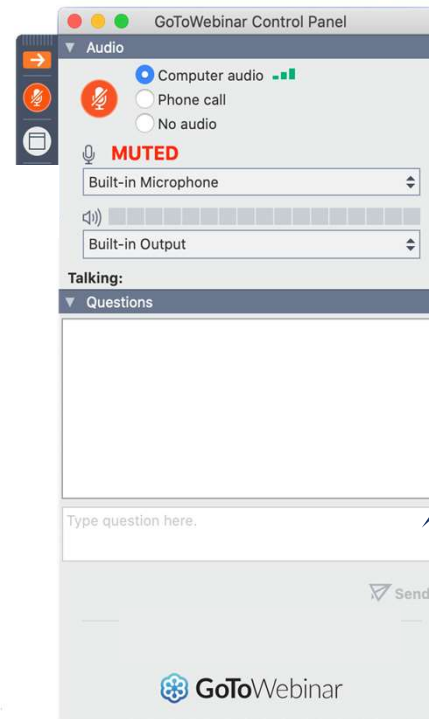
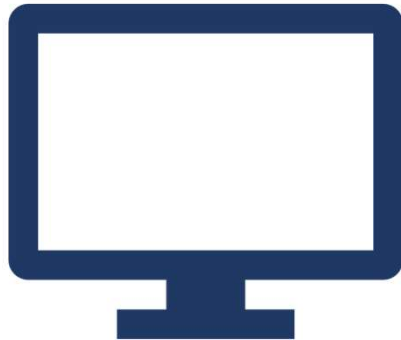
- Submit a written comment form
- Written comments are part of the public meeting record



# Ways to Submit Comments Online



Virtually



Type your question or comment here

Or go to [www.CFLRoads.com/project/448456-1](http://www.CFLRoads.com/project/448456-1)



LPGA BOULEVARD  
PD&E STUDY

From U.S. 92 to Williamson Boulevard  
Volusia County

FPID No. 448456-1

# Other Ways to Submit Comments



Contact the Project Manager, Jesse Blouin, AICP



Jesse.Blouin@dot.state.fl.us



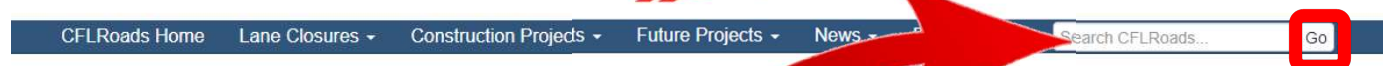
719 S. Woodland Blvd., MS 501  
DeLand, FL 32720-6834



386-943-5167



# Stay Informed

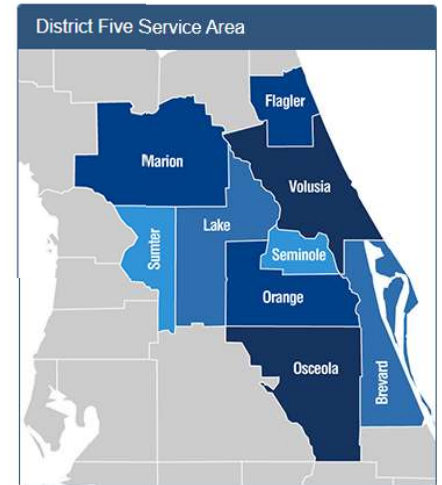


Welcome to FDOT's District Five Projects Website

- Go to the project website on [www.cflroads.com](http://www.cflroads.com)
- Enter the project number (448456-1) in the search box at the top right and click “go”



Grab Your Running Shoes: Learn about upcoming trail plans and projects  
Looking for the nearest trail to explore? Check here for SUN Trail funded construction projects – both completed and on the horizon! [More...](#)



LPGA BOULEVARD  
PD&E STUDY

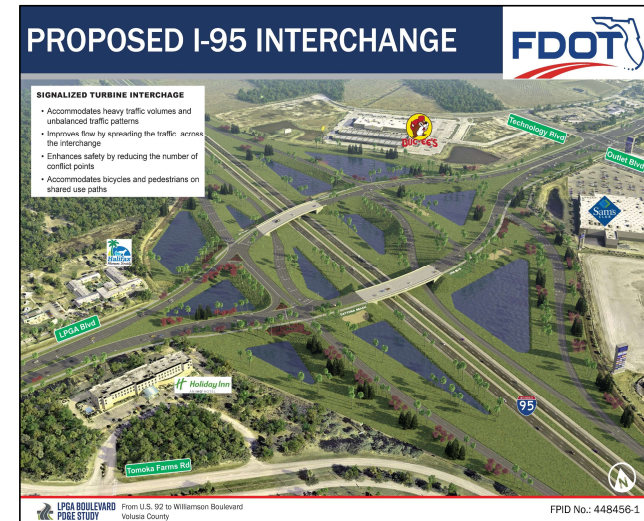
From U.S. 92 to Williamson Boulevard  
Volusia County

FPID No. 448456-1

# Stay Informed



- View the Open House exhibits and presentation
  - At 1459 US-1 Suite 3  
Ormond Beach, FL 32174
- Contact Claire Hartman to make appointment
  - Phone: 386-238-9798 or
  - Email: [Claire@Ghyabi.com](mailto:Claire@Ghyabi.com)



# Thank You for Participating



**SAFETY IS  
EVERYONE'S  
RESPONSIBILITY**



**THE  
SAFE  
SYSTEM**

**APPROACH**

Zero is our goal. A Safe System is how we will get there.



Jesse Blouin, AICP  
FDOT Project Manager  
719 S. Woodland Blvd., MS 501  
DeLand, FL 32720-6834  
386-943-5167  
Jesse.Blouin@dot.state.fl.us

[www.cflroads.com/project/448456-1](http://www.cflroads.com/project/448456-1)

*Please submit questions or comments by March 13, 2023*



**LPGA BOULEVARD  
PD&E STUDY**

From U.S. 92 to Williamson Boulevard  
Volusia County

FPID No. 448456-1