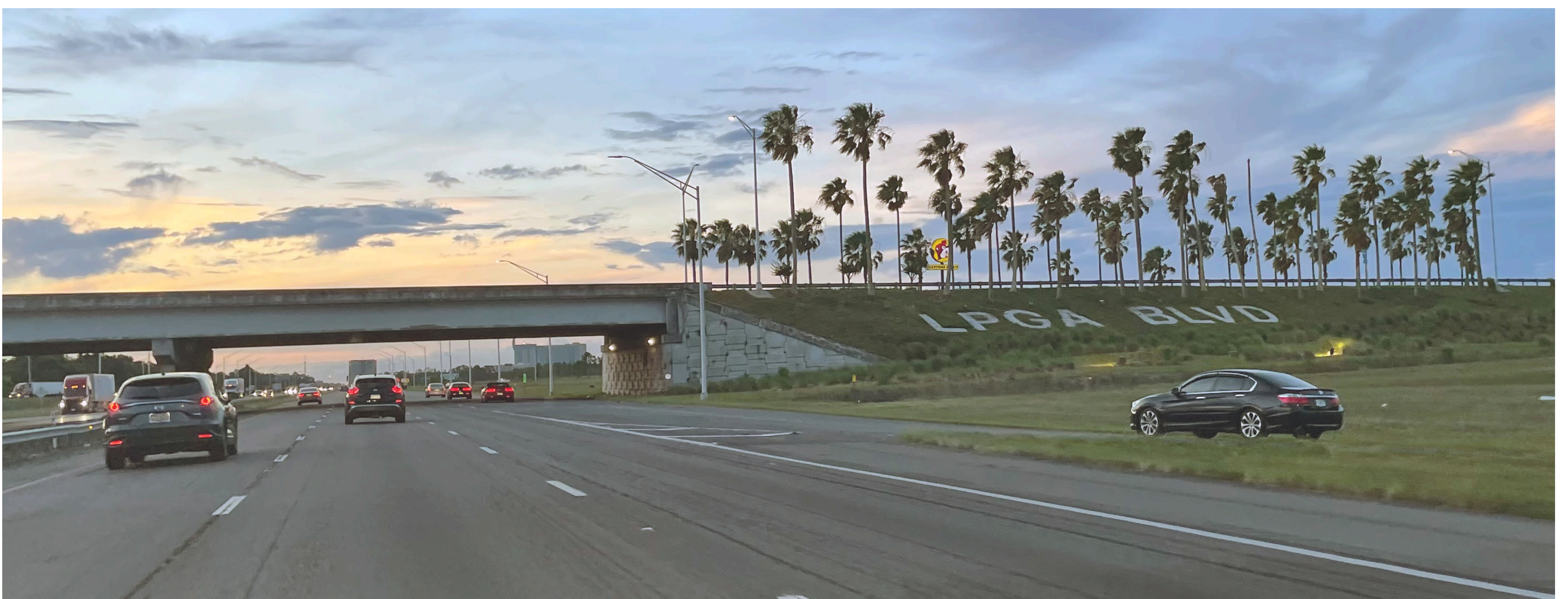


Welcome

to the LPGA Boulevard PD&E Study

Alternatives Open House



For more information regarding the LPGA Boulevard PD&E Study, please scan the QR code or visit www.cflroads.com/project/448456-1.

February 28, 2023

National Environmental Policy Act (NEPA)

The environmental review, consultation, and other actions required by applicable federal environmental laws for this project are being, or have been, carried out by the Florida Department of Transportation (FDOT) pursuant to 23 U.S.C. § 327 and a Memorandum of Understanding dated May 26, 2022 and executed by the Federal Highway Administration and FDOT.

Public participation is solicited without regard to race, color, national origin, age, sex, religion, disability, or family status. Persons wishing to express concerns relative to FDOT compliance with Title VI may do so by contacting:

Melissa McKinney

District Five Title VI Coordinator

719 South Woodland Boulevard, MS
501 DeLand, Florida 32720-6834
386-943-5077
melissa.mckinney@dot.state.fl.us

Stefan Kulakowski, FCCM, CPM

State Title VI Coordinator

605 Suwannee Street, MS 65
Tallahassee, Florida 32399-0450
850-414-4742
stefan.kulakowski@dot.state.fl.us

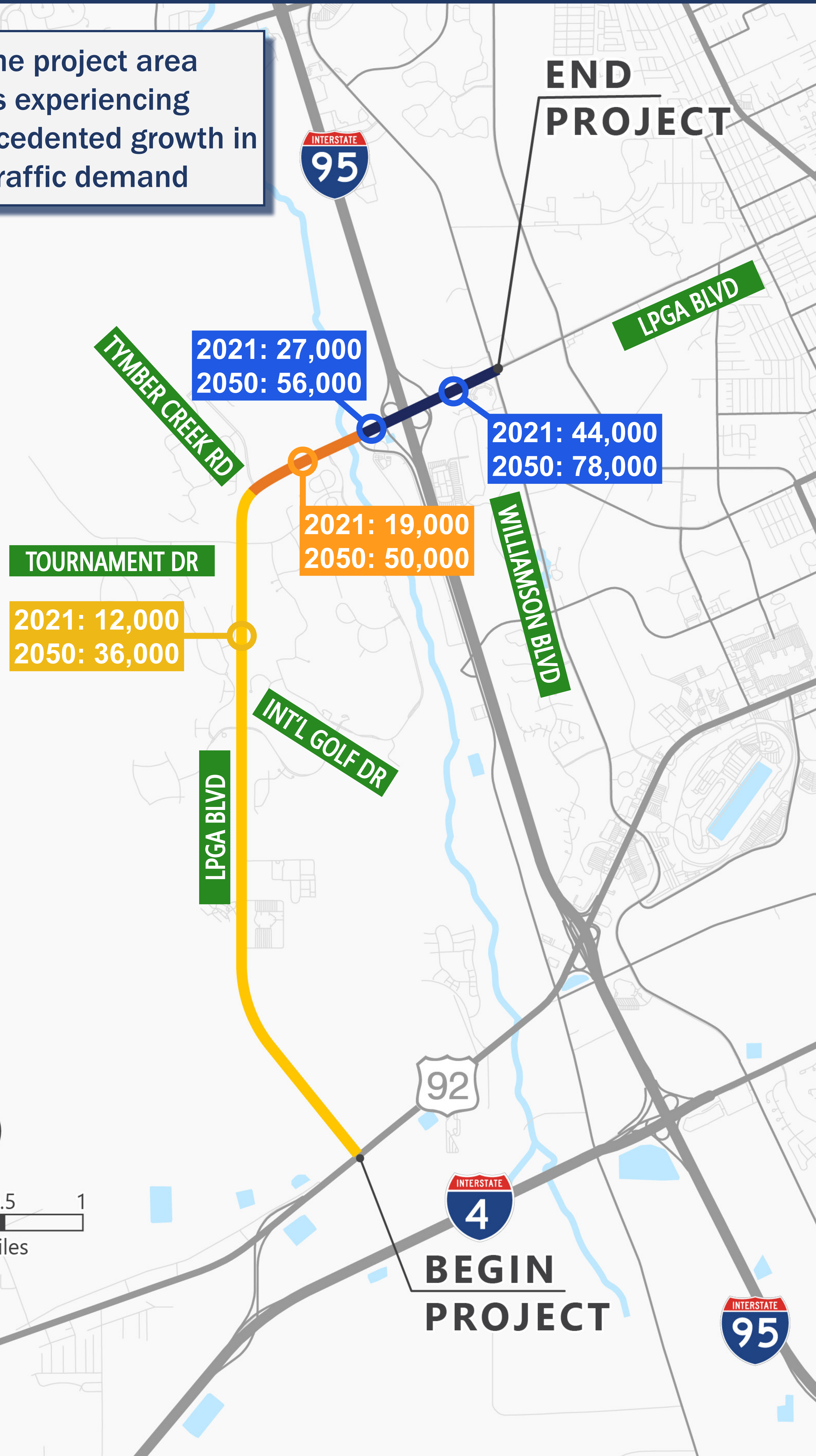
All inquiries or concerns will be handled according to FDOT procedure and in a prompt and courteous manner.

PROJECT OVERVIEW

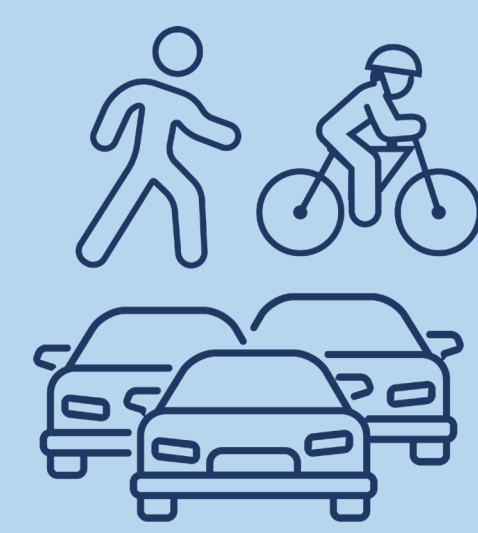


Daily Traffic Volumes

The project area is experiencing unprecedented growth in traffic demand



Purpose and Need



Accommodate future transportation demand, including bicyclists and pedestrians



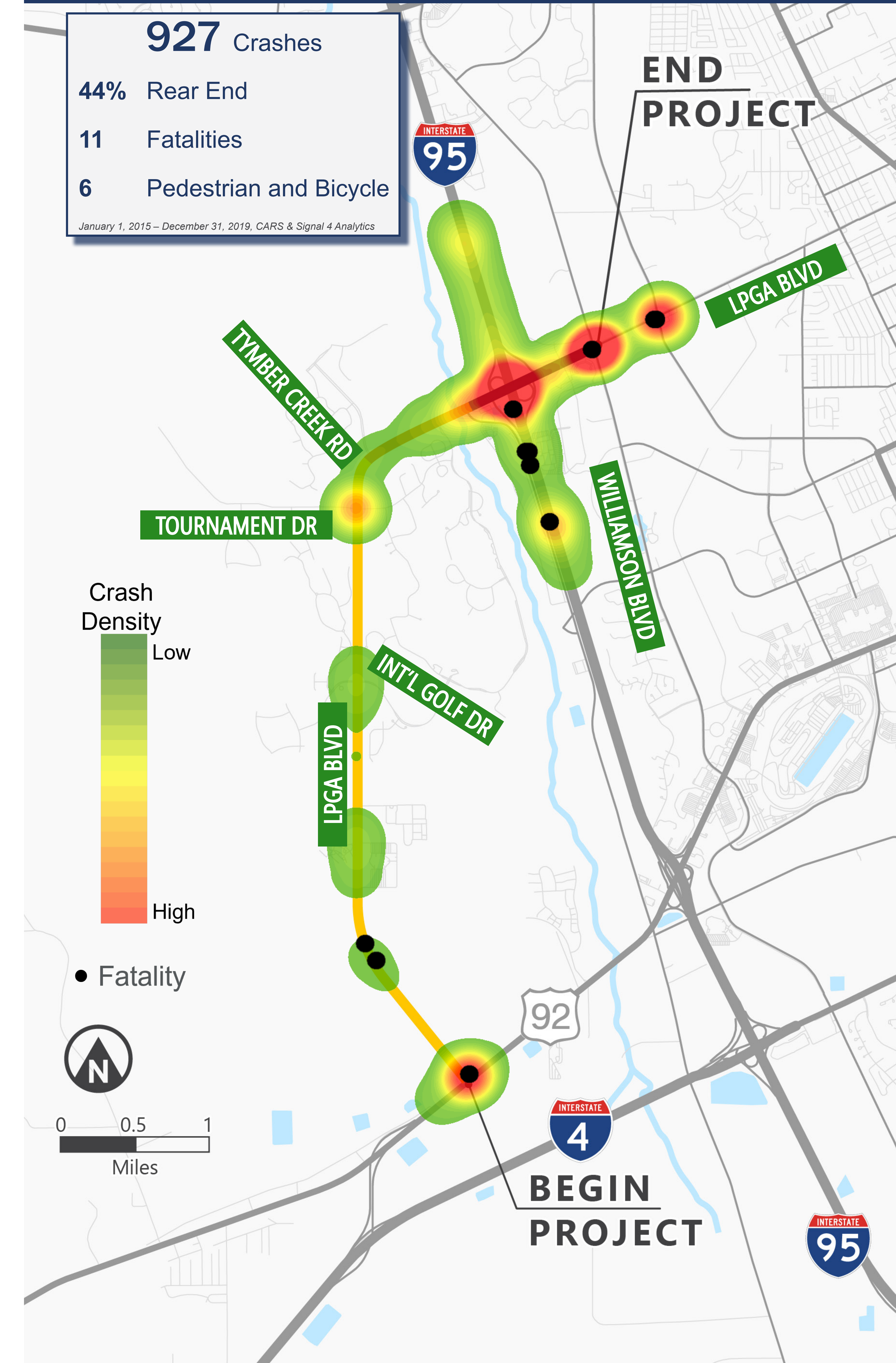
Enhance safety for LPGA Boulevard and I-95 Interchange

Safety Conditions

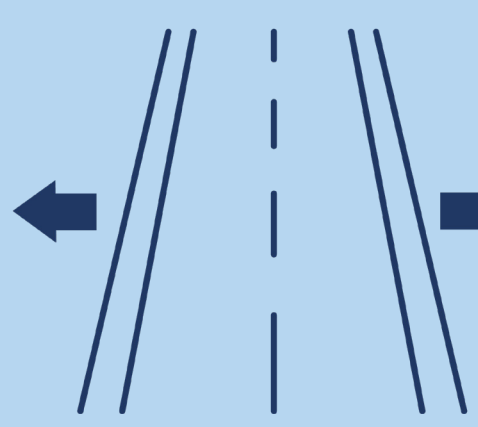
927 Crashes

- 44% Rear End
- 11 Fatalities
- 6 Pedestrian and Bicycle

January 1, 2015 – December 31, 2019, CARS & Signal 4 Analytics



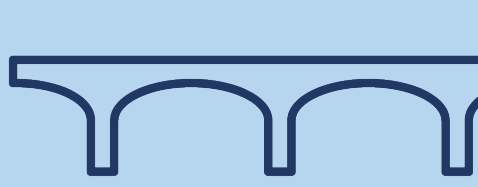
The Study is Evaluating



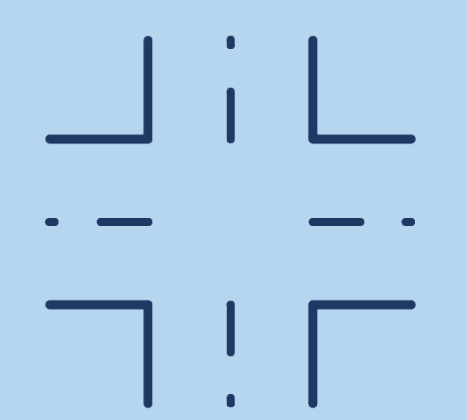
Widening LPGA Boulevard



Adding shared use paths for bicyclists and pedestrians



Replacing and widening the Tomoka River Bridge



Redesigning major intersections



Redesigning the I-95 interchange to a Signalized Turbine Interchange



Adding stormwater ponds

PROPOSED TOMOKA RIVER BRIDGE



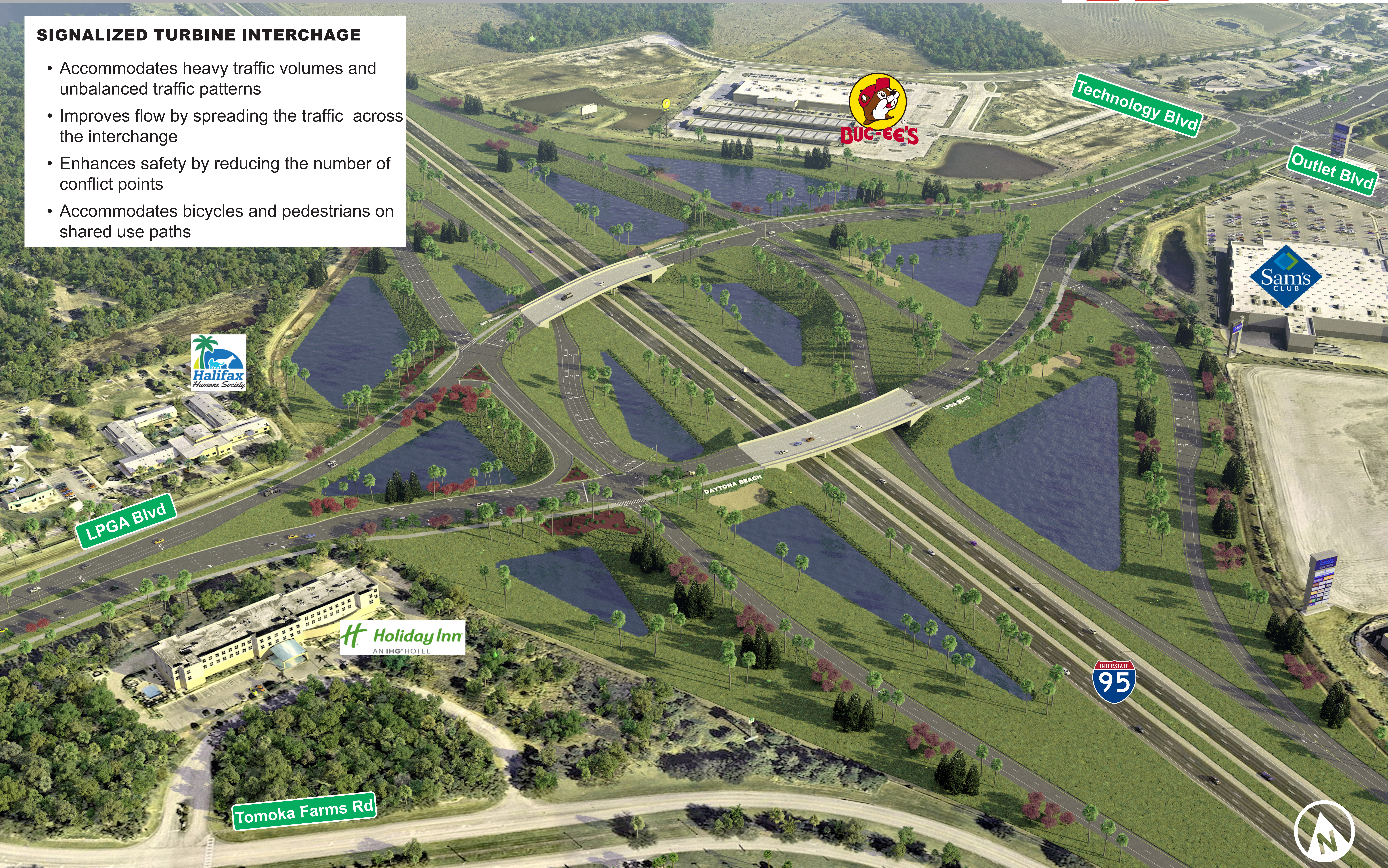
RENDERING OF THE PROPOSED TOMOKA RIVER BRIDGE

PROPOSED I-95 INTERCHANGE



SIGNALIZED TURBINE INTERCHAGE

- Accommodates heavy traffic volumes and unbalanced traffic patterns
- Improves flow by spreading the traffic across the interchange
- Enhances safety by reducing the number of conflict points
- Accommodates bicycles and pedestrians on shared use paths



EVALUATION MATRIX



EVALUATION CRITERIA	NO BUILD ALTERNATIVE	BUILD ALTERNATIVE
Purpose and Need		
Accommodate Future Travel Demand	No	Yes
Improve Safety	No	Yes
Right-of-Way Impacts		
Number of Parcels Impacted	0	4
Number of Residential Relocations	0	0
Number of Business Relocations	0	0
Potential Environmental Impacts		
Protected Species	0	1
Archaeological Potential	None	Low
Historic Sites	0	0
Contamination Sites	0	1
Wetlands (Acres)	0	42
Floodplains (Acres)	0	0.16
Public Lands (Acres)	0	0
Noise Sensitive Sites	None	135
Estimated Costs in Millions (Present Day Costs)		
Right of way	No cost	\$10.7
Wetland Mitigation	No cost	\$1.9
Construction Engineering and Inspection	No cost	\$13.4
Construction Cost	No cost	\$191.9

Project costs are subject to change

PROJECT SCHEDULE



PROJECT MILESTONE/ ACTIVITY	2021	2022				2023			
	October - December	January - March	April - June	July - September	October - December	January - March	April - June	July - September	October - December
Begin Study									
Data Collection									
Project Advisory Group Meetings									
Analyze and Refine Viable Alternatives									
Alternatives Open House									
Refine and Select the Recommended Alternative									
Prepare Documents									
Public Hearing									
PD&E Study Approval									
Public/Stakeholder Engagement									

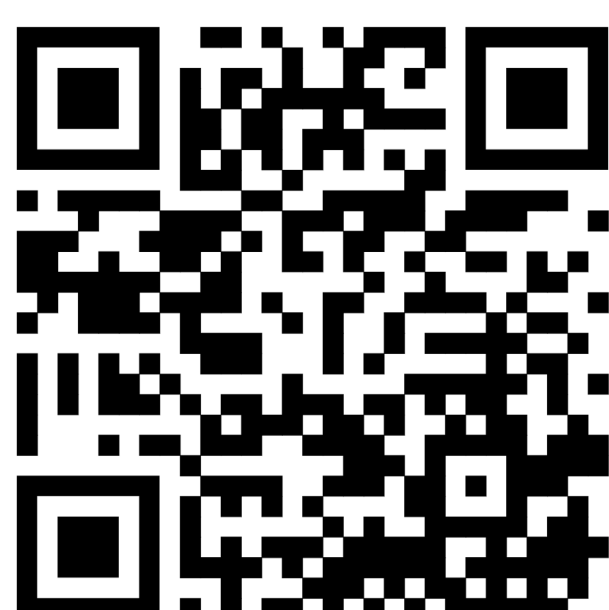
Today's Alternatives Open House

Note: The schedule is tentative and subject to change

Thank You

for attending LPGA Boulevard PD&E Study

Alternatives Open House



For more information regarding the LPGA Boulevard PD&E Study, please scan the QR code or visit www.cflroads.com/project/448456-1.