

# U.S. 441 ROAD WIDENING

From Lake Ella Road to Avenida Central in Lady Lake

Lake County

Financial Project  
Identification No.:  
238395-5

## PROJECT DESCRIPTION

The Florida Department of Transportation (FDOT) is widening U.S. 441 from four to six lanes between Lake Ella Road and Avenida Central (at Griffin Avenue) in Lady Lake.

Both northbound and southbound U.S. 441 will be expanded from two to three lanes. Bicycle lanes and sidewalks will be added along the 4.157-mile length of the project. Additional work includes drainage improvements, signing and lighting upgrades, median access changes and new landscaping.

Another key aspect of the project will be the removal of the U.S. 441 bridges over County Road (C.R.) 25. The bridges will be replaced with a new at-grade intersection at that location. C.R. 25 will connect with U.S. 441 on the east side of the highway via a signalized intersection and will end as a cul-de-sac on the west side of U.S. 441 (*see map on reverse*).

## WHAT TO EXPECT

During construction, there will be both daytime and nighttime lane closures. Short-term road closures may also occur, if necessary. Electronic message boards and other signage will be used to alert traffic to any upcoming closures. The public can also monitor lane closure information at FDOT's Central Florida website, [www.cflroads.com](http://www.cflroads.com).

Temporary pavement and temporary traffic signal detection will be used to maintain the safe and efficient flow of traffic throughout the project. Signal timings will be adjusted slightly, so you may notice longer wait times. Road conditions during construction are short-term and will become less apparent as the project progresses.

The contractor will maintain pedestrian access to sidewalks during construction using signed detours, channelizing devices, and/or temporary walkways and ramps, when appropriate. Access to businesses and residences will be maintained.

Please note that the level of work activity will vary during different phases of construction and the construction schedule may change due to weather or other unexpected conditions.

SEE REVERSE SIDE FOR DETAILED PROJECT MAP 

### CONTRACTOR

Southland Construction, Inc.

### PROJECT COST

\$45 Million

### PROJECT START

Summer 2020

### ESTIMATED COMPLETION

Late 2023



Contact Info:

**Thomas McNiff**

Community Outreach Coordinator

352-326-7744

[Thomas.McNiff@dot.state.fl.us](mailto:Thomas.McNiff@dot.state.fl.us)



Follow us on social media



[CFLRoads.com](http://CFLRoads.com)



[Facebook.com/MyFDOTCFL](https://www.facebook.com/MyFDOTCFL)



[@MyFDOT\\_CFL](https://twitter.com/MyFDOT_CFL)



[@MyFDOT\\_CFL](https://www.instagram.com/MyFDOT_CFL)

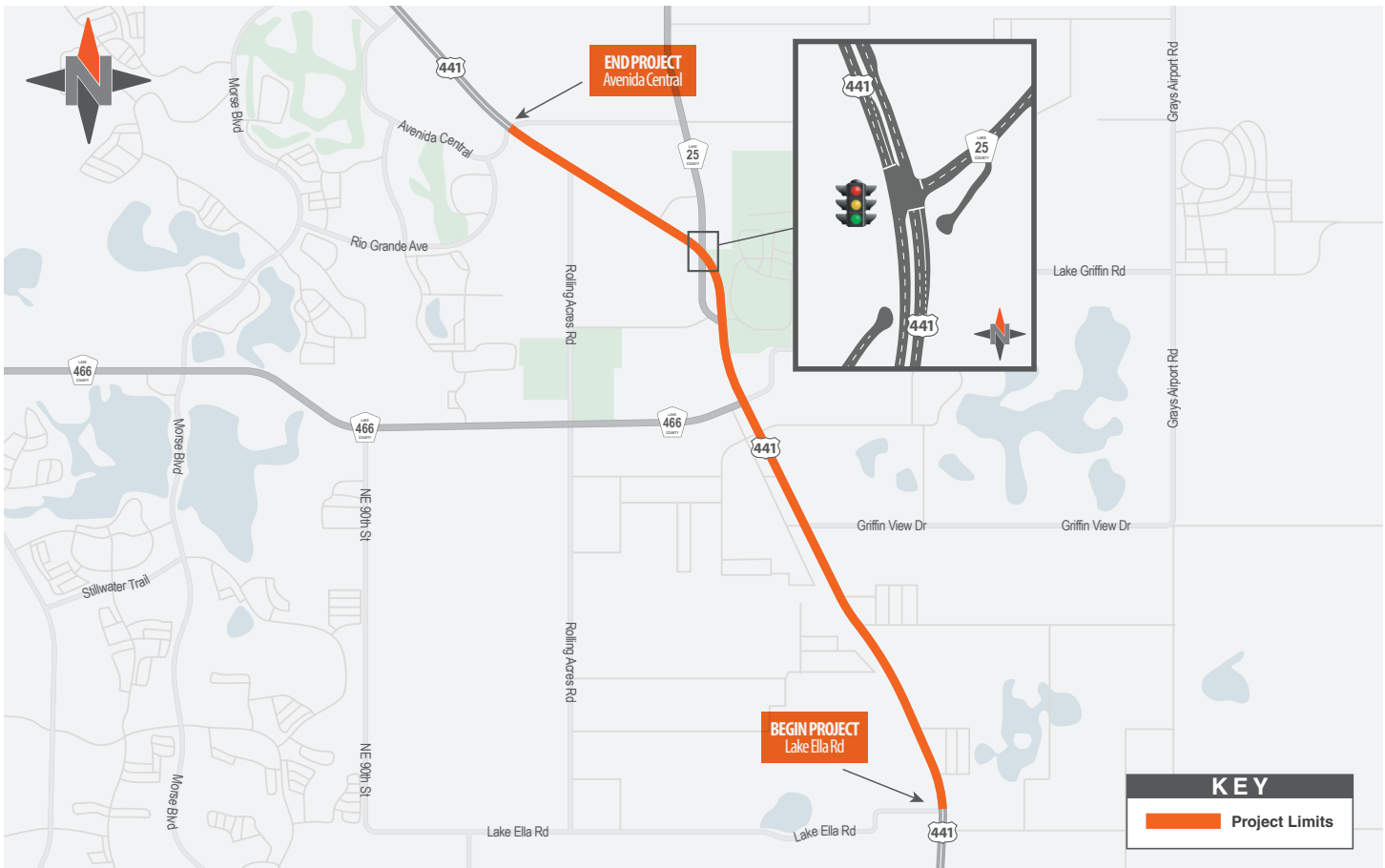
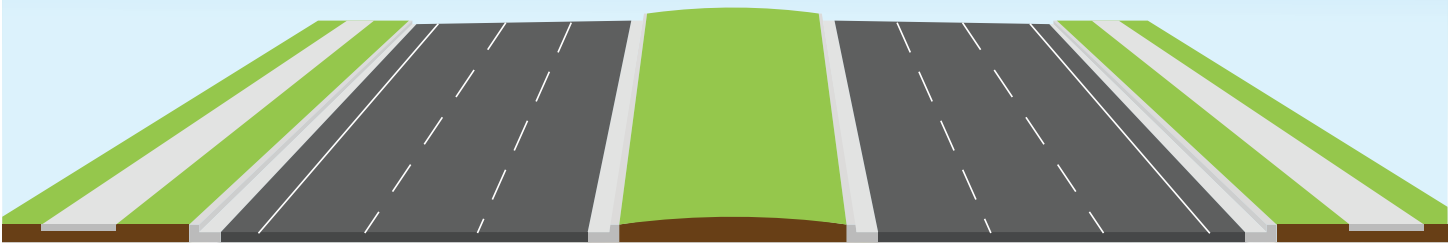
# U.S. 441 ROAD WIDENING

Financial Project  
Identification No.:  
238395-5

From Lake Ella Road to Avenida Central in Lady Lake

Lake County

Typical cross-section of the completed roadway



Follow us on social media