



S.R. A1A (North Ocean Shore Boulevard) Improvements

From Osprey Drive to north of Mariners Drive

Flagler County

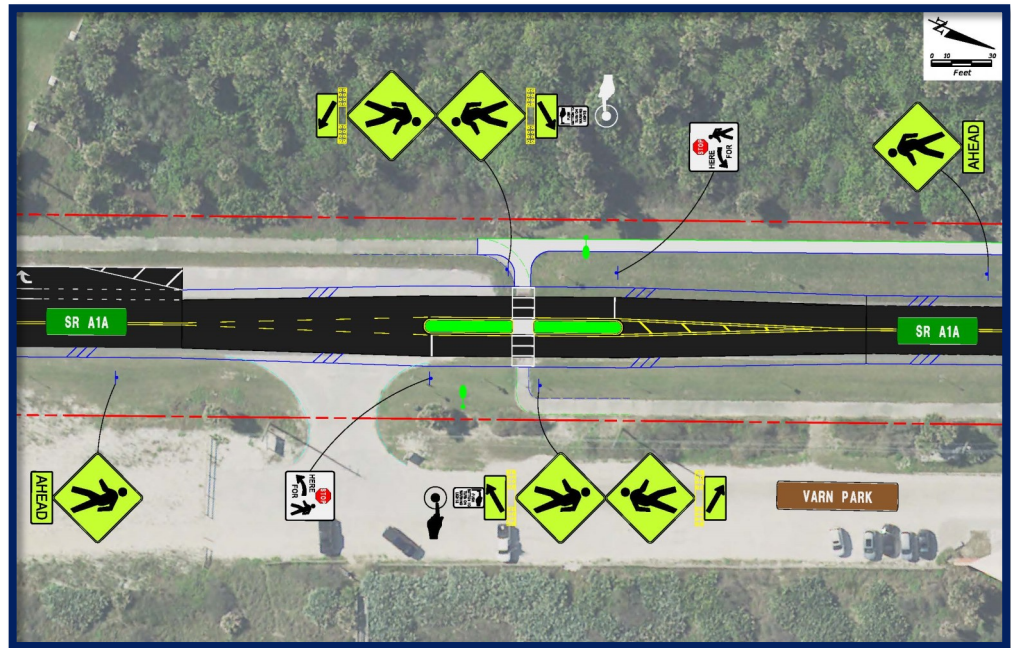
Financial Project Identification (FPID) No.: 439124-1



Project Description

The Florida Department of Transportation (FDOT) is proposing improvements to State Road (S.R.) A1A (North Ocean Shore Boulevard) from Osprey Drive to north of Mariners Drive in Flagler County. The project proposes pedestrian improvements and repaving the corridor to extend the life of the existing roadway.

Pedestrian improvements include two mid-block crossings with pedestrian activated signals known as Rectangular Rapid Flashing Beacons (RRFB). When activated by the person waiting to cross, the signals will flash yellow lights to alert drivers. By state law, drivers are required to stop at any marked crosswalk when a pedestrian is present. The mid-block crossing locations with RRFBs are at Varn Park (see example on the right) and just south of Westmayer Place at Treasure By The Sea. New crosswalks are also proposed just north of Painters Walk, north of Driftway Terrace, and just south of Mariners Drive. An RRFB is also proposed at the crosswalk just south of Mariners Drive. You can find more information on RRFBs on the back of this handout.



Additionally, raised medians will be constructed north and south of Mariners Drive. The medians will not block access to any driveways or side streets. Also, the travel lanes will be restriped to create a wider shoulder which will now be marked for bicycle use.

Project Status and Estimated Costs*

Design:	Ongoing - spring 2024	\$ 1.2 million
Right of Way:	Within existing	—
Construction:	Funded - summer 2024	\$ 3.1 million

*subject to change

Contact:

Joseph Fontanelli
 FDOT Project Manager
 386-943-5234
 Joseph.Fontanelli@dot.state.fl.us



HOW TO USE AN RRFB

(Rectangular Rapid Flashing Beacon)

Pedestrians and Bicyclists



Press the button to activate the RRFB signals; the lights will begin to flash indicating to motorists a pedestrian is ready to cross.

Pedestrians

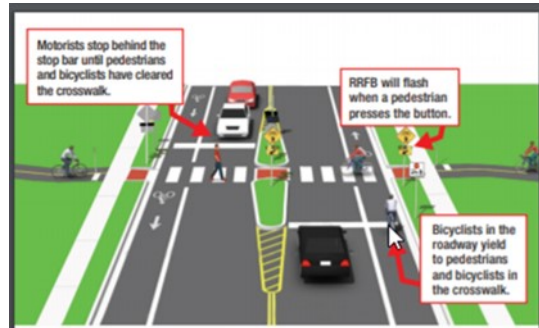
1. Make eye contact with motorists to be sure traffic is yielding before entering the crosswalk.
2. Walk defensively, scanning both directions to be sure motorists see you.
3. Always scan the road while crossing making sure all vehicles have stopped.

Bicyclists

1. Obey all traffic signs and signals.
2. When using the crosswalk, follow the pedestrian rules.
3. When using the travel lane, ride in the direction of traffic and always yield to pedestrians.

www.AlertTodayFlorida.com

Funded by the Florida Department of Transportation



HOW TO USE AN RRFB

(Rectangular Rapid Flashing Beacon)

Motorists

Always stop for pedestrians and bicyclists at crosswalks.

1. Anticipate pedestrians crossing when approaching an RRFB.
2. Never pass another vehicle that has stopped or is slowing down at a crosswalk.
3. Always stop before the stop bar (line) pavement markings.
4. Never stop in or block a crosswalk.
5. Always stop for pedestrians entering or in a crosswalk.
6. Remain stopped for pedestrians regardless of activated RRFBs.
7. Wait for pedestrians to completely clear the crosswalk on your side of the road, and for anyone crossing into your lanes from the other direction.



RRFBs use an irregular flash pattern that is similar to emergency flashers on police vehicles.

[Source: FHWA, 2008]