



S. Goldenrod Road

Median Modifications Public Hearing

Meeting Agenda

5:00 PM

- Please sign in
- Pick up a speaker request card if you wish to speak after the presentation, and a comment card if you would like to make a written statement.
- Open House—project staff available to answer questions

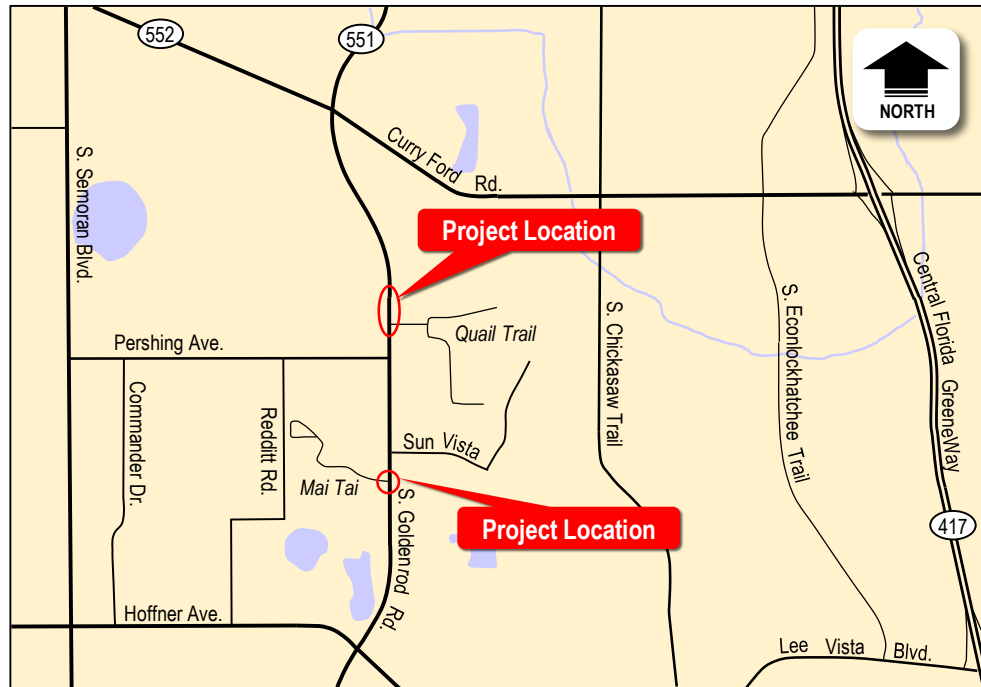
6:00 PM

- Presentation
- Public comments

7:00 PM

- Meeting ends

Thursday, January 28, 2016



State Road (SR) 551 At Quail Pond Street



State Road (SR) 551 at Mai Tai Drive



SR 551 (South Goldenrod Road) at Quail Pond Street Median Modifications:

After evaluation of the crashes and traffic delay associated with westbound left turn movements from Quail Pond Street onto Goldenrod Road, FDOT is converting the existing full median opening to a directional median opening along with a new northbound left turn lane (to allow U-turns) at this location. In addition, another northbound left turn lane will also be added at the median opening approximately 600 feet north of Quail Pond Street to accommodate the northbound U-turns resulting from converting the Quail Pond Street intersection to a directional median opening.

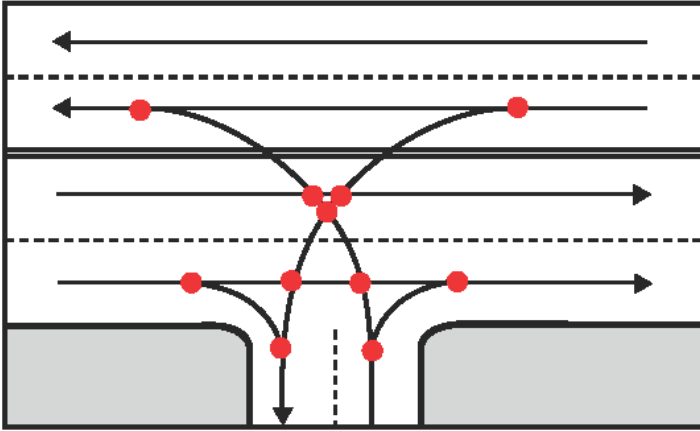
SR 551 (South Goldenrod Road) at Mai Tai Drive Median Modifications:

The existing full median opening at Mai Tai Drive will be converted by FDOT to a directional median opening based on the evaluation of crashes and observed conflicts at this location. The eastbound and westbound left/through movements from Mai Tai Drive will be redirected as northbound and southbound U-turns to Sun Vista Drive and Charlin Pkwy, 680' north and 800' south, respectively, where northbound and southbound left turn lanes are provided.

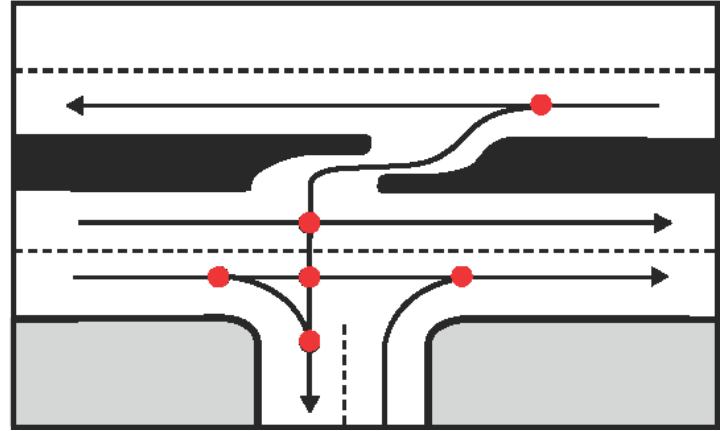
Access Management – Median Openings

Conflict points are locations along a roadway where two vehicles' paths can legally cross. At a four way intersection there are as many as 36 conflict points.

Each conflict point is a location where a crash can occur. A basic principle of access management is to limit the number of conflict points along a roadway by minimizing the number of driveways and median openings and restricting certain movements at some median openings. Drivers can be overwhelmed by conflict points in close proximity to one another, increasing the potential for crashes.



Before Access Management = More Conflicts



After Access Management = Less Conflicts

A typical median opening that allows all turns has numerous conflict points. One way to limit the number of conflicts is through the design of median openings. The above example on the right is a "directional" median opening serving a side street that allows for left-turns from the major street but prohibits left-turns from the minor street. This is a design which greatly reduces the conflict points by limiting the number of allowed turning movements.



For more information visit:
www.CFLroads.com



Public Comments

Thank you for your participation. Your input is important and any comments are appreciated. We encourage you to fill out a comment card which is available at the registration desk and drop it in the comment box, or return it by mail to the address on the back of the card
no later than February 8, 2016.

Written comments may also be submitted by mail to:
Dave Mixon
Florida Department of Transportation
719 South Woodland Boulevard
DeLand, FL 32720

Or by email to:
Dave.Mixon@dot.state.fl.us



We Value Your Opinion

Public participation is solicited without regard to race, color, national origin, age, sex, religion, disability or family status. Persons wishing to express their concerns relative to FDOT compliance with Title VI may do so by contacting Jennifer Smith, FDOT District Five Title VI Coordinator by phone at (386) 943-5367, or via email at Jennifer.Smith2@dot.state.fl.us.