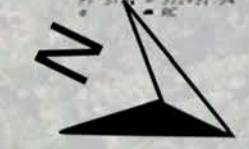


I-95 Northbound Collector Distributor (CD) Road and Temporary Northbound Traffic Switch



CURVE DATA RAMP01

PT STA	= 421+23.82
P	= 17' 03" 117° 11' 17"
D	= 486.60
L	= 988.91
PC STA	= 418+29.07
PT STA	= 424+28.98
E	= 0.000

CURVE DATA RAMP02

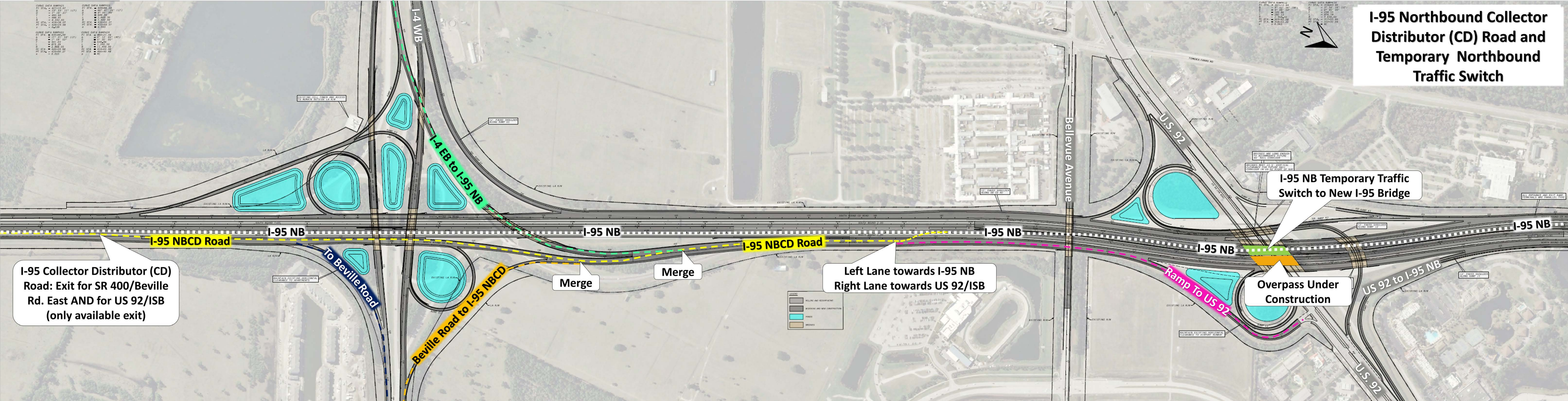
PT STA	= 420+44.10
P	= 17' 03" 117° 11' 17"
D	= 486.60
L	= 988.91
PC STA	= 418+29.07
PT STA	= 424+28.98
E	= 0.000

CURVE DATA RAMP03

PT STA	= 424+28.98
P	= 17' 03" 117° 11' 17"
D	= 486.60
L	= 988.91
PC STA	= 418+29.07
PT STA	= 424+28.98
E	= 0.000

CURVE DATA RAMP04

PT STA	= 424+28.98
P	= 17' 03" 117° 11' 17"
D	= 486.60
L	= 988.91
PC STA	= 418+29.07
PT STA	= 424+28.98
E	= 0.000



I-95 Collector Distributor (CD) Road: Exit for SR 400/Beville Rd. East AND for US 92/ISB (only available exit)

I-95 NB

I-95 NB

I-95 NBCD Road

I-95 NB

I-95 NB

I-95 NB

To Beville Road

Beville Road to I-95 NBCD

Merge

Merge

**Left Lane towards I-95 NB
Right Lane towards US 92/ISB**

Ramp To US 92

I-95 NB Temporary Traffic Switch to New I-95 Bridge

Overpass Under Construction

US 92 to I-95 NB

Bellevue Avenue

U.S. 92

I-4 WB

I-4 EB to I-95 NB

LEGEND

- EXISTING AND RECONSTRUCTED
- PROPOSED AND NEW CONSTRUCTION
- PONDS
- BRIDGES