



# State Road (S.R.) 535 (Kissimmee Vineland Road) At Lake Bryan Beach Boulevard and Vistana Drive

## Safety Improvements - Median Modifications



The Florida Department of Transportation (FDOT) is developing plans to improve safety on State Road (S.R.) 535 at the intersections with Lake Bryan Beach Boulevard and Vistana Drive. Proposed improvements consist of converting the full median openings to bi-directional openings that provide an area for only one direction of traffic to make a left turn onto side streets; however, traffic from side streets will only be able to turn right onto Kissimmee Vineland Road. This reduces the number of conflict points at the intersections, improving safety.

These proposed improvements are shown on the back of this handout.

**Thursday, January 17, 2019**

**Rosen Jewish Community Center (JCC)  
11184 S. Apopka-Vineland Rd.  
Orlando, FL 32836**

### Agenda

**5 p.m.**

- Please sign in
- Pick up a speaker request card if you wish to speak after the presentation, and/or a comment card if you would like to make a written statement
- Open House—project staff available to answer questions

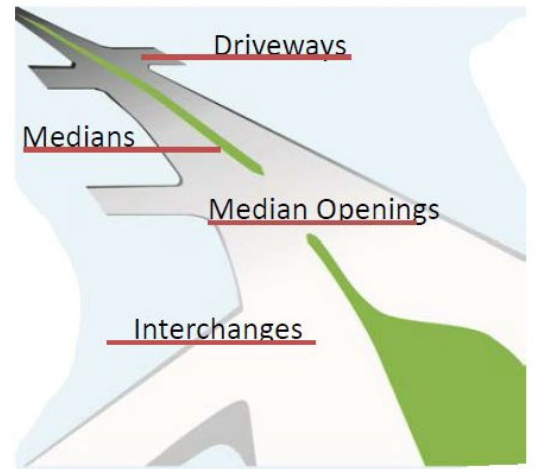
**6 p.m.**

- Presentation
- Public comments



**Access Management and Safety**  
One of the most important responsibilities of the FDOT is to ensure that the design of each state road properly balances access and mobility.

Access Management is the planning and control of the location, spacing, design and operation of driveways, median openings and street connections to a roadway. Access Management designates where and how vehicles enter and exit a roadway, helps protect public investment in roadways and improves public safety by preserving mobility, reducing delays and minimizing crashes.



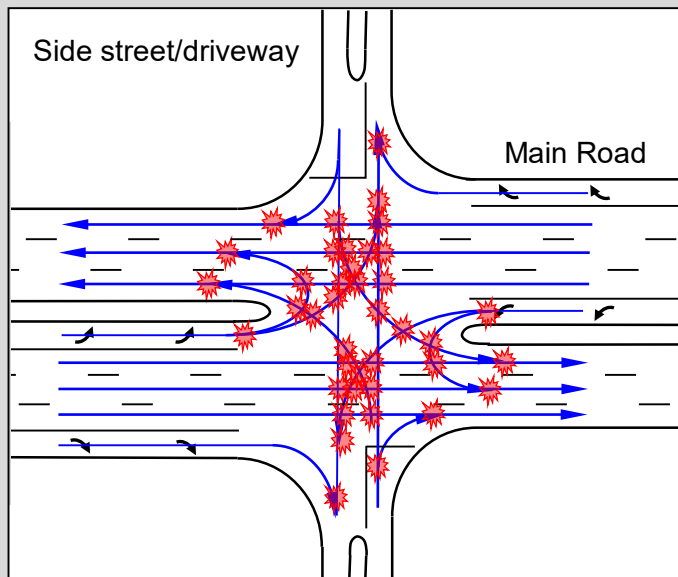
### **We Value Your Opinion**

*Public participation is solicited without regard to race, color, national origin, age, sex, religion, disability or family status. Persons wishing to express their concerns relative to FDOT compliance with Title VI may do so by contacting Jennifer Smith, FDOT District Five Title VI Coordinator at [Jennifer.Smith2@dot.state.fl.us](mailto:Jennifer.Smith2@dot.state.fl.us).*

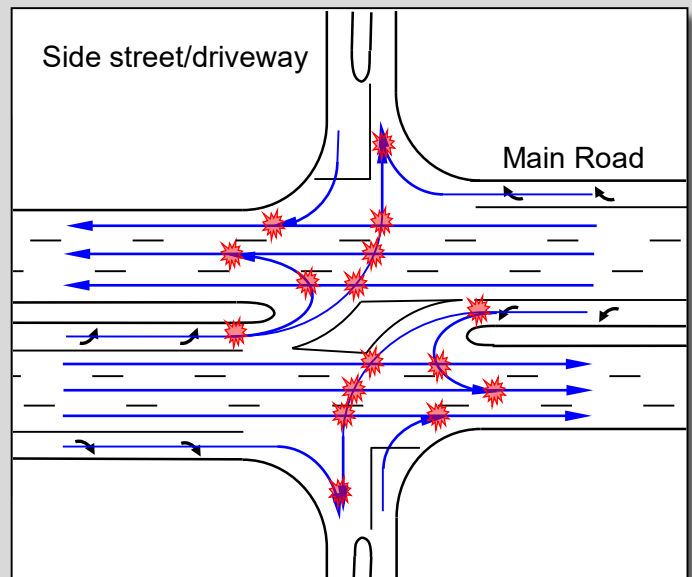


## Access Management and Conflict Points

Conflict points are locations along a roadway where two vehicle's paths can legally cross. At a four-way intersection there are as many as 36 conflict points. Each conflict point is a location where a crash can occur. A basic principle of access management is to limit the number of conflict points along a roadway by minimizing the number of driveways and median openings and restricting certain movements at some median openings. Drivers can be overwhelmed by conflict points in close proximity to one another, increasing the potential for crashes. The diagrams below illustrate the difference in conflict points between a full median opening and a bi-directional opening.



**Before Access Management**



**After Access Management**

## Public Comments

Thank you for your participation. Your input is important, and any comments are appreciated. We encourage you to fill out a comment card, which is available at the sign-in table, and drop it in the comment box, or return it by mail to the address on the back of the card no later than January 28, 2019.



Written comments may also be submitted by mail to the project manager:

Dave Mixon

Florida Department of Transportation, District Five

719 S. Woodland Boulevard, M.S. 562

DeLand, FL 32720

Or by email to:

[Dave.Mixon@dot.state.fl.us](mailto:Dave.Mixon@dot.state.fl.us)

