

# Wrong-Way Driving Alert System Fact Sheet

» Learn more at  
[i4Beyond.com/wrongway](https://i4Beyond.com/wrongway)

## Reducing Wrong-Way Incidents

Wrong-way driving crashes occur when a driver has not observed posted traffic signs and proceeds in a lane going the wrong direction, increasing the risk of a head-on collision. As the Florida Department of Transportation (FDOT) continues to enhance the safety of roads and interstates, Wrong Way Vehicle Detection Systems (WWVDS) are being implemented on the State Highway System off-ramps to deter wrong-way driving incidents.

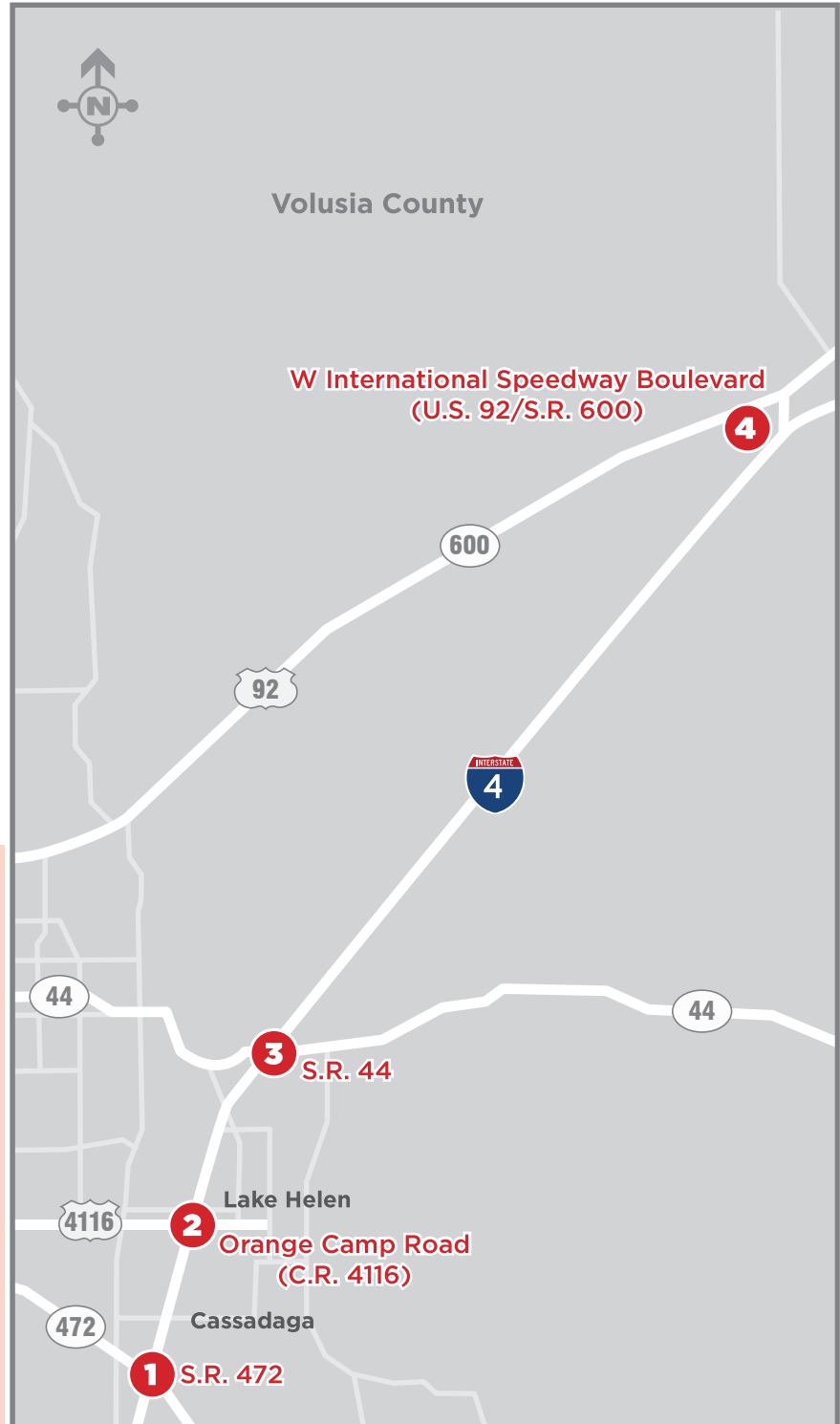


To help motorists properly identify interstate entrance and exit ramps, FDOT is increasing the amount of wrong-way signage, roadway reflectors and pavement markings. Installation of WWVDS and other driving deterrents includes detection signs at various off-ramps along Interstate 4 (I-4) in Orange, Seminole, and Volusia counties.

## Wrong Way Vehicle Detection Systems

FDOT is installing signs at the following I-4 interchanges:

1. State Road (S.R.) 472
2. Orange Camp Road (County Road [C.R.] 4116)
3. State Road (S.R.) 44
4. W. International Speedway Boulevard (U.S. 92/S.R. 600)



For more information on the WWVDS, visit [I4Beyond.com/wrongway](https://I4Beyond.com/wrongway)



Florida Department of Transportation  
*Improve Safety, Enhance Mobility, Inspire Innovation*

 [CFLRoads.com](https://CFLRoads.com)  
 [@MyFDOT\\_CFL](https://@MyFDOT_CFL)

 [MyFDOTCFL](https://MyFDOTCFL)  
 [MYFDOT\\_CFL](https://MYFDOT_CFL)

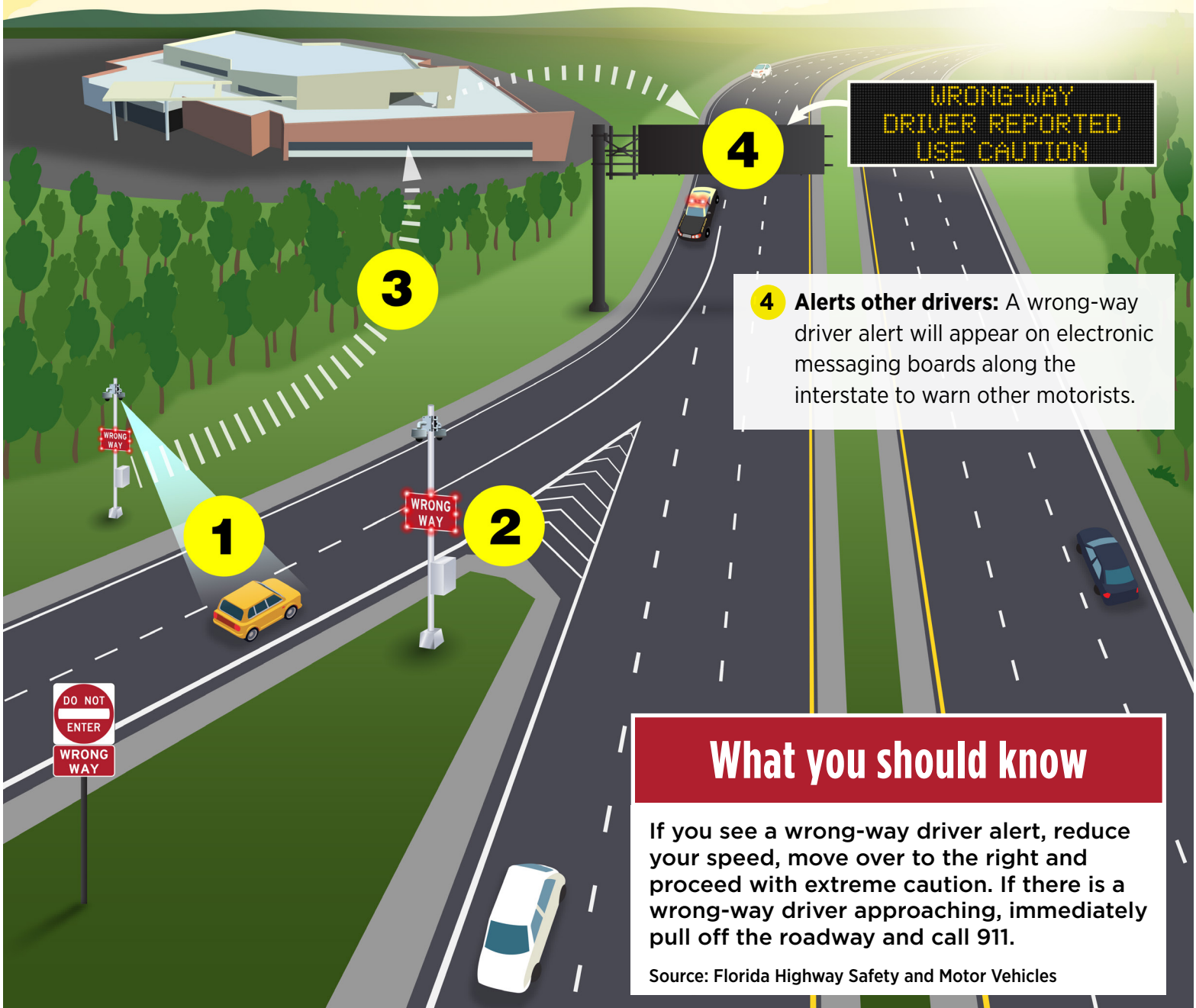
# How Wrong-Way Driving Alert Systems Work

» Learn more at [i4Beyond.com/wrongway](https://i4Beyond.com/wrongway)

**1 Detects vehicles:** Signs located on exit ramps use various technologies to detect a driver going the wrong way.

**2 Triggers lights:** Flashing lights are activated to notify the driver if he/she is traveling in the wrong direction.

**3 Notifies officials:** Radar detection sends alert immediately to FDOT traffic managers and law enforcement officials.



**4 Alerts other drivers:** A wrong-way driver alert will appear on electronic messaging boards along the interstate to warn other motorists.

## What you should know

If you see a wrong-way driver alert, reduce your speed, move over to the right and proceed with extreme caution. If there is a wrong-way driver approaching, immediately pull off the roadway and call 911.

Source: Florida Highway Safety and Motor Vehicles



Florida Department of Transportation  
Improve Safety, Enhance Mobility, Inspire Innovation

[CFLRoads.com](https://www.cflroads.com)  
[@MyFDOT\\_CFL](https://twitter.com/MyFDOT_CFL)

[MyFDOTCFL](https://www.facebook.com/MyFDOTCFL)  
[MYFDOT\\_CFL](https://www.instagram.com/MyFDOT_CFL)