

# ROADWAY AND PEDESTRIAN SAFETY IMPROVEMENTS

S.R. A1A from north of Ocean Marina Drive to south of Westmayer Place

## Flagler County

### PROJECT DESCRIPTION

The Florida Department of Transportation (FDOT) is implementing roadway and pedestrian safety improvements along State Road (S.R.) A1A from north of Ocean Marina Drive to south of Westmayer Place in the town of Beverly Beach, Flagler County.

Improvements include widening and repaving the roadway from just north of Shelter Cove Drive to south of Westmayer Place and installing a new left turn lane into Surfside Estates mobile home park from northbound S.R. A1A. Additionally, a raised center median with openings to provide access to designated driveways will be constructed from just south of Beverly Beach Town Hall to Luta Lane. The existing crosswalk at the Beverly Beach Camptown RV Resort will be reconstructed and upgraded. The new pedestrian crossing will include a Rectangular Rapid Flashing Beacon (RRFB) with yellow LED lights and signage to increase driver awareness of people crossing the roadway. Work also includes the addition of 465 feet of new sidewalk, reconstruction of the existing sidewalk, new pavement markings, drainage improvements, and enhanced lighting.

### WHAT TO EXPECT

During construction, drivers should expect intermittent daytime single lane closures throughout the project limits. Electronic message boards, flagging operations, and other signage will be used to direct motorists around lane closures. A temporary crosswalk will be installed to accommodate foot traffic while the permanent pedestrian crossing is being constructed at Beverly Beach Camptown RV Resort. Access to residences and businesses, as well as pedestrian access, will be maintained throughout the duration of the project.

The level of work activity will vary during different phases of construction, and the schedule may change due to weather or other unforeseen circumstances. For the most current project details and lane closure information, make sure to visit the project page on FDOT's Central Florida Roads website, [www.cflroads.com](http://www.cflroads.com).

### Financial Project Identification

(FPID) No. 445690-1

#### CONTRACTOR

Halifax Paving, Inc.

#### PROJECT COST

\$1.7 Million

#### PROJECT START

March 2023

#### ESTIMATED

#### INSTALLATION COMPLETION

Fall 2023



FOR QUESTIONS, CONCERNS, OR  
PROJECT UPDATES

Send a request to:

**Britney Jones**  
Community Outreach Coordinator  
386-740-3566  
[britney.jones@dot.state.fl.us](mailto:britney.jones@dot.state.fl.us)

SEE REVERSE SIDE FOR PROJECT LOCATION MAP 



Scan the QR code using your mobile device to view more information about this project.



[CFLRoads.com](http://CFLRoads.com)



[Facebook.com/MyFDOTCFL](https://www.facebook.com/MyFDOTCFL)



[@MyFDOT\\_CFL](https://twitter.com/MyFDOT_CFL)



[@MyFDOT\\_CFL](https://www.instagram.com/MyFDOT_CFL)



Follow us on social media

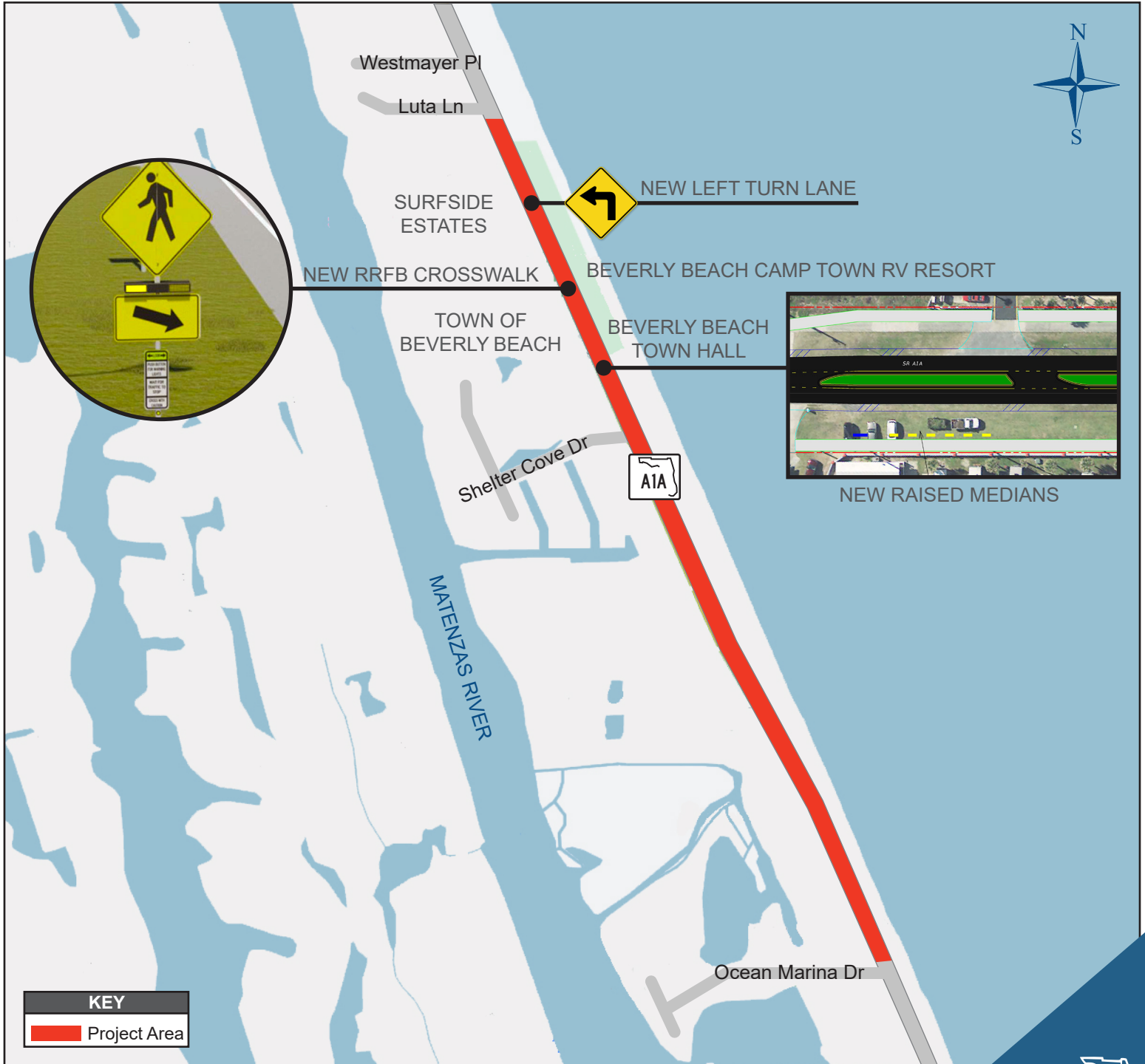
# ROADWAY AND PEDESTRIAN SAFETY IMPROVEMENTS

S.R. A1A from north of Ocean Marina Drive to south of Westmayer Place

Flagler County

Financial Project Identification

(FPID) No. 445690-1



Scan the QR code using your mobile device to view more information about this project.



Follow us on social media