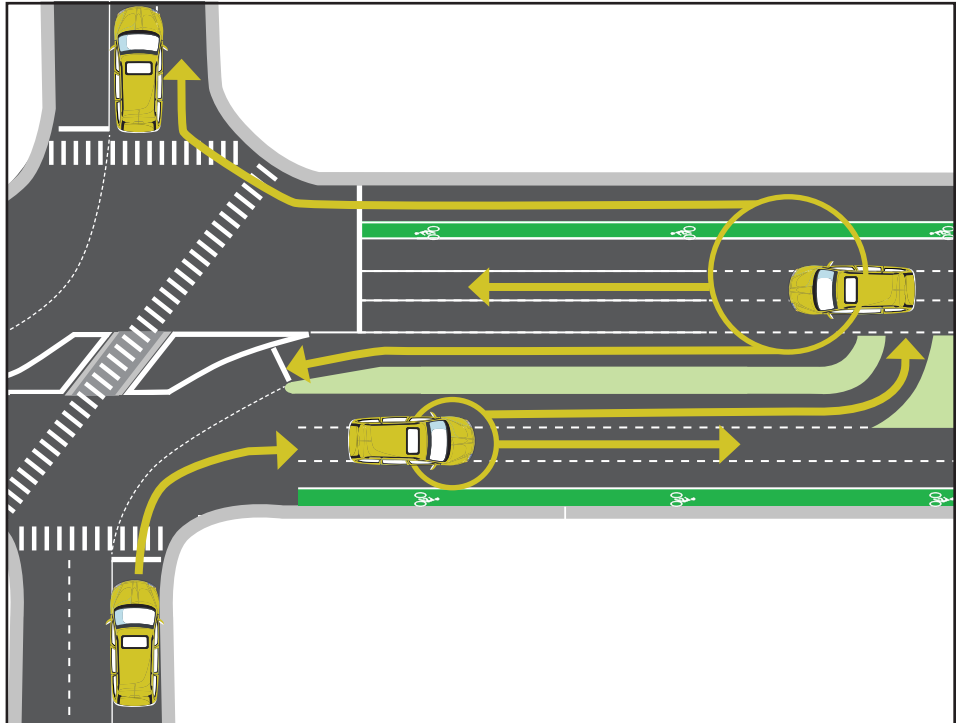


## Signalized Restricted Crossing U-Turn Intersections (RCUT)

The Florida Department of Transportation (FDOT) is using an innovative intersection design to enhance safety and improve mobility on state roadways. Signalized **restricted crossing U-turn (RCUT)** intersections implement diagonal crosswalks, dedicated right turns, and designated U-turns to improve the driving conditions of the roadway. This design has proven successful across the United States in reducing the most serious types of crashes and improving traffic flow through the intersections.

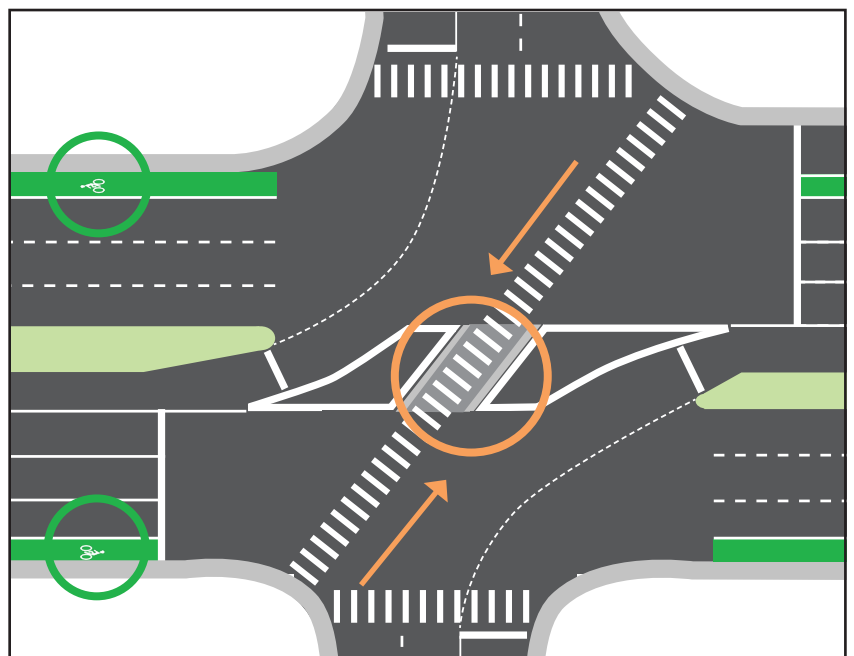
### MOTORISTS DRIVING THROUGH AN RCUT INTERSECTION

For traffic driving along the main roadway, the design operates the same way as a traditional intersection. Drivers are able to continue straight, turn right or turn left onto a side street. Vehicles approaching the main roadway from a side street can only turn right. Drivers on the side streets wanting to go left or straight through the intersection will instead turn right and then make a U-turn at the next median opening.



### PEDESTRIANS AND BICYCLISTS CROSSING AN RCUT INTERSECTION

The diagonal crosswalk keeps pedestrians and bicyclists out of the path of vehicles turning left from the mainline onto side streets, as well as vehicles turning right from side streets. RCUT intersections can significantly reduce the potential for collisions involving vehicles with pedestrians and bicyclists.



## Signalized Restricted Crossing U-Turn Intersections (RCUT)

### RCUT BENEFITS

**Restricted Crossing U-Turns (RCUTs)** reduce travel time through the intersection and accommodate higher numbers of vehicles at the same time. According to the Federal Highway Administration, travel time through this type of intersection can be reduced by as much as 40 percent compared to a traditional intersection. The benefits include:

- **Improved safety:** RCUTs reduce the number of points where vehicles cross paths and reduces the potential for crashes.
- **Shorter wait times:** Since there are fewer traffic signal phases and side street vehicles can only turn right, motorists don't have to wait as long or stop as often. This results in reduced travel times for motorists traveling through the corridor.

#### FOR QUESTIONS, CONCERNS, OR PROJECT UPDATES:



John Livingston  
Community Outreach Coordinator  
321-319-8130  
[john.livingston@dot.state.fl.us](mailto:john.livingston@dot.state.fl.us)

#### Scan the QR Code:

Use your mobile device to view more information about this project.



### NAVIGATING AN RCUT INTERSECTION

