



# **WELCOME**

## **Clearlake Road (S.R. 501) Project Development & Environment (PD&E) Study**

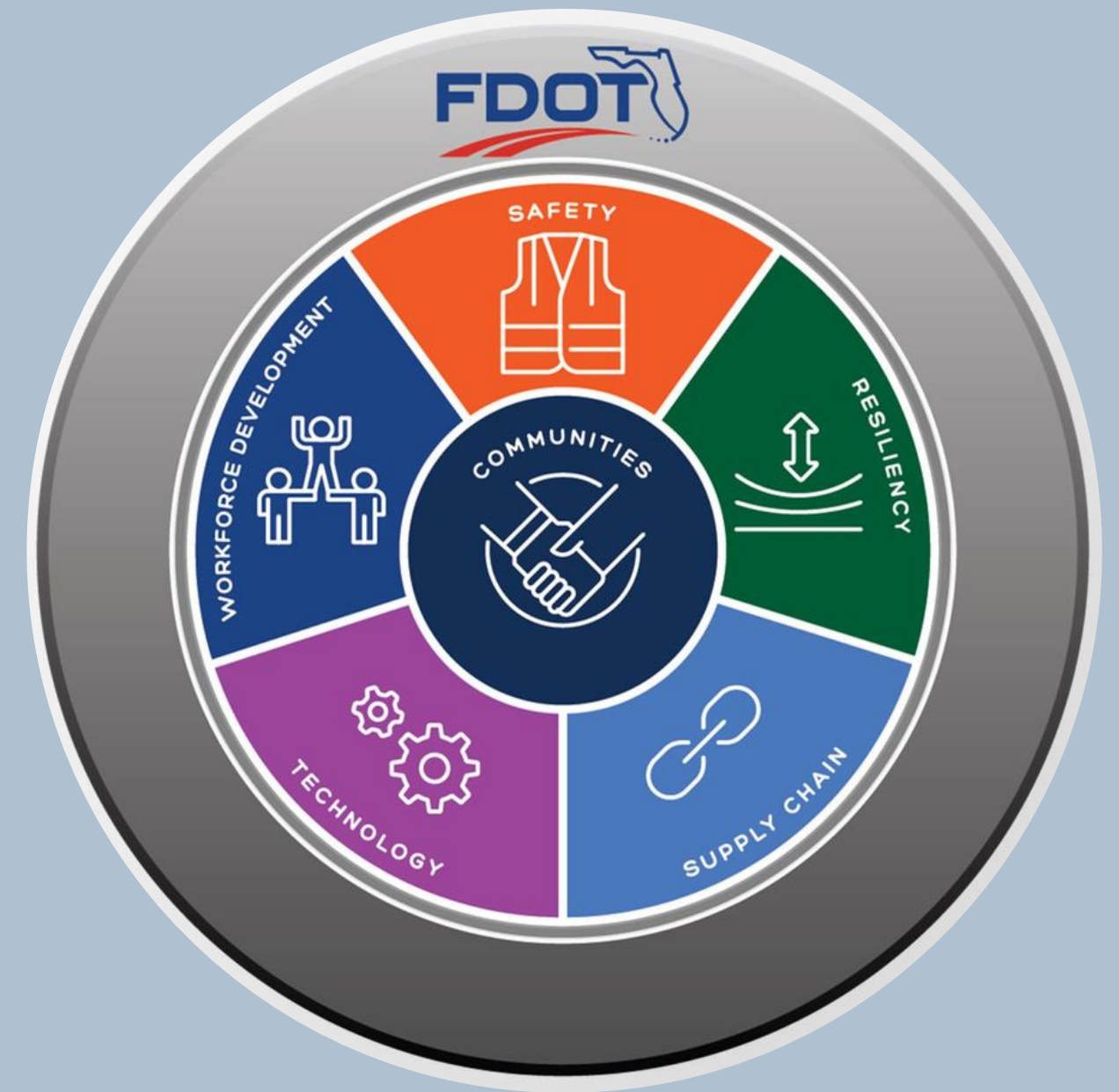
### **PUBLIC INFORMATION OPEN HOUSE**

January 12, 2026  
FPID No.: 433605-1

# About This Open House

---

This public information open house is being offered in person and online to give the community an opportunity to learn about the project and provide feedback.





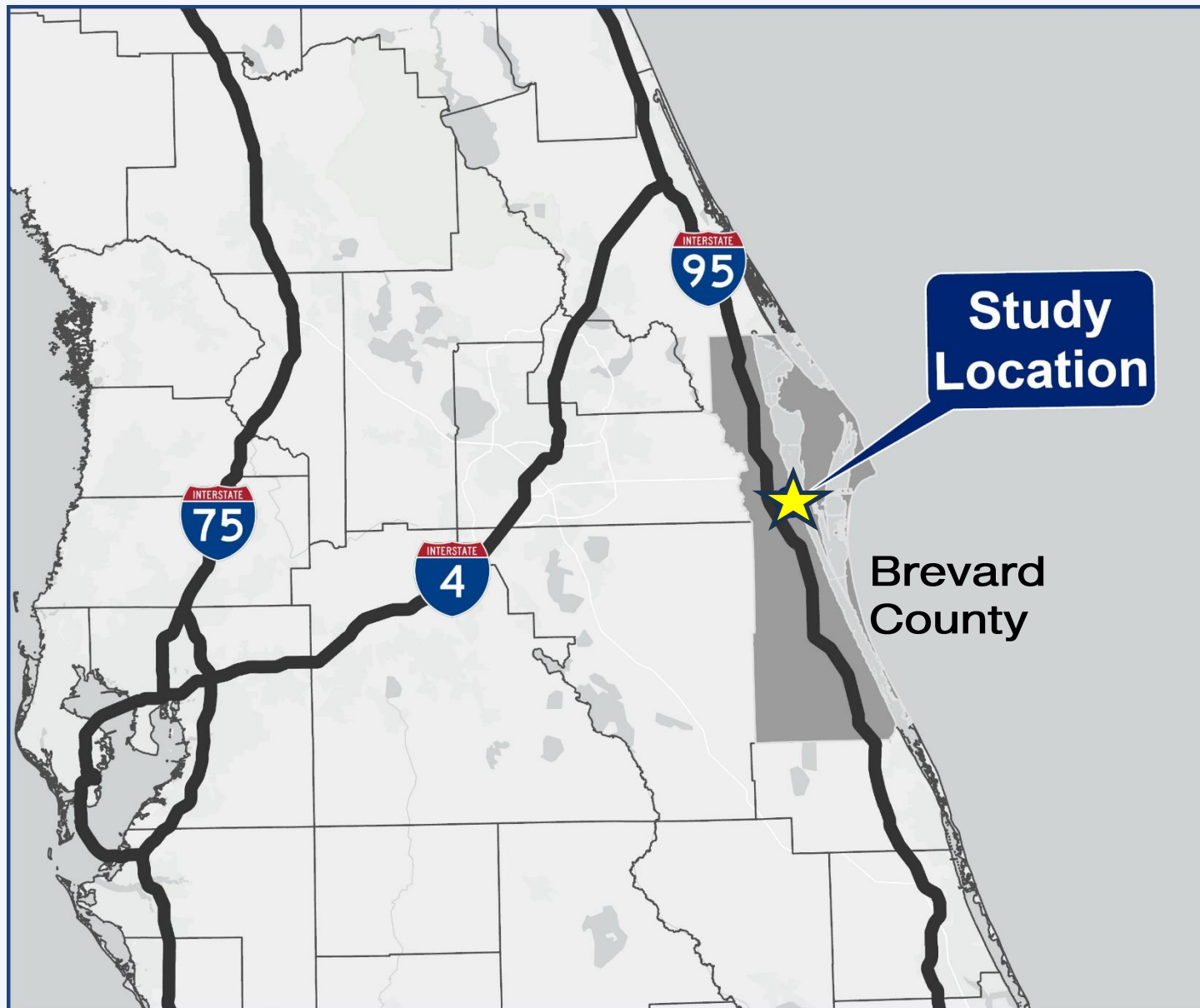
# Agenda

---

- Explain the project goals
- Present proposed improvements
- Obtain your feedback

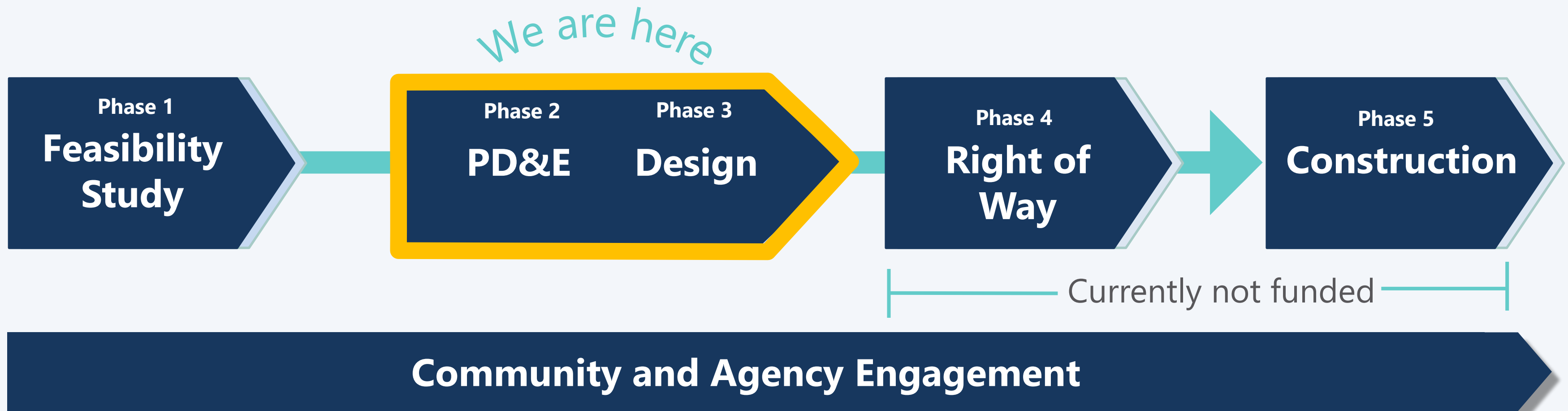


# Study Area





# Transportation Development Process



# Project Background

- PD&E originally completed with approval of the State Environmental Impact Report (SEIR) in 2017
- PD&E Study Update to comply with the National Environmental Policy Act (NEPA) and expand funding opportunities for future phases

STATE ENVIRONMENTAL IMPACT REPORT  
(SEIR)

PROJECT DEVELOPMENT AND ENVIRONMENT  
(PD&E) STUDY

CLEARLAKE ROAD (SR 501)  
FROM MICHIGAN AVENUE (MP 2.235) TO INDUSTRY  
ROAD (MP 3.358)

FINANCIAL PROJECT ID: 433605-1-22-01  
EFFICIENT TRANSPORTATION DECISION MAKING (ETDM) NUMBER: 13120  
BREVARD COUNTY, FLORIDA



Prepared for:  
FLORIDA DEPARTMENT OF TRANSPORTATION  
DISTRICT 5  
719 South Woodland Boulevard  
DeLand, Florida 32720  
December 2016



# Purpose and Need

- The purpose of the project is to increase capacity on S.R. 501 between Michigan Avenue and Industry Road
- This need is based on addressing projected traffic growth, improving modal interrelationships, and enhancing safety for all users



Accommodate Future  
Travel Demand



Improve Modal  
Interrelationships



Enhance Safety

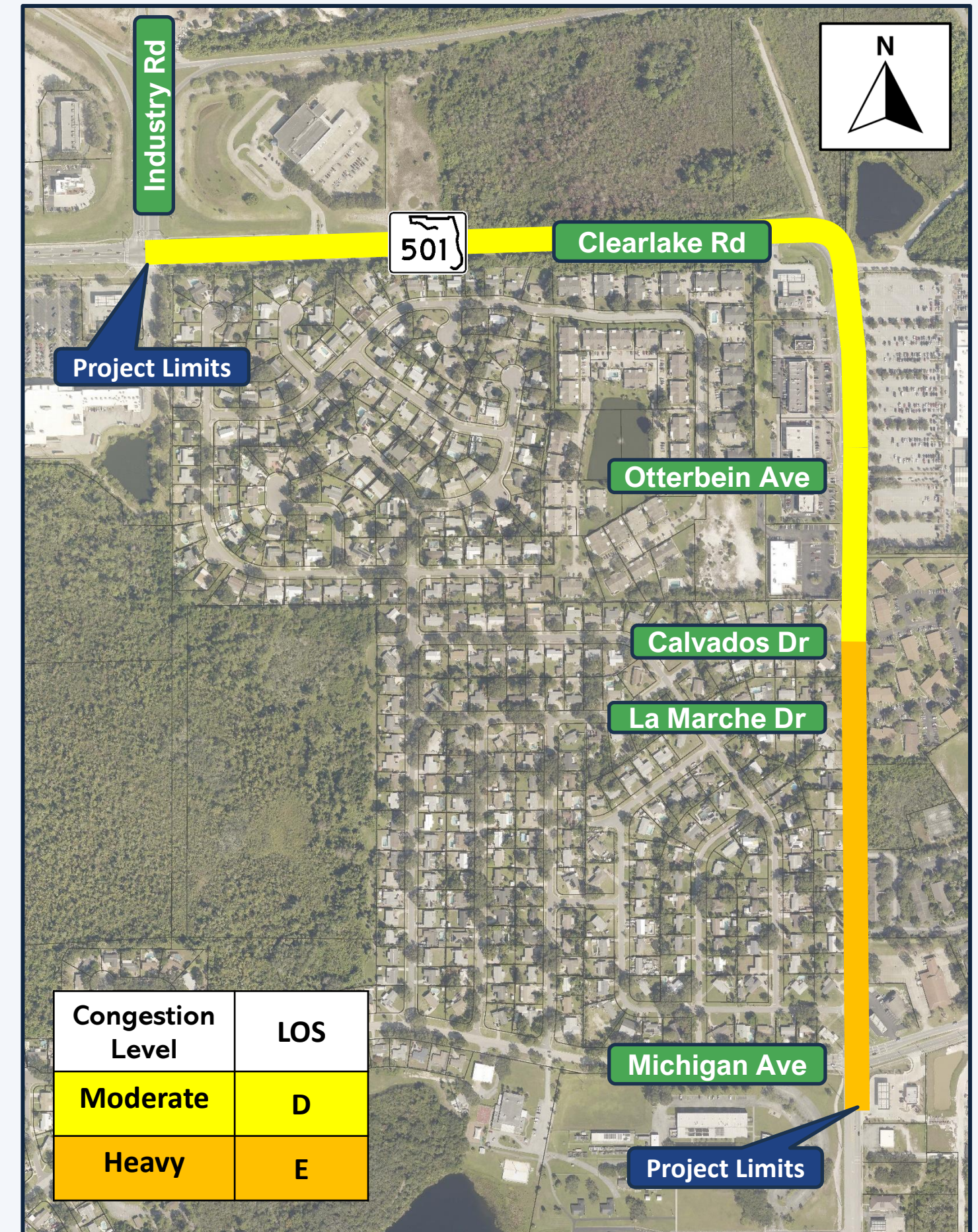


# Purpose and Need – Projected Traffic Growth

- S.R. 501 Future Year (2050) Traffic
  - Moderate congestion anticipated from Industry Road to Calvados Drive
  - Heavy congestion anticipated from Calvados Drive to Michigan Avenue



Accommodate Future  
Travel Demand





# Purpose and Need – Modal Interrelationships

- Pedestrian facilities lack connectivity
  - Sidewalk is only continuous on east side of S.R. 501
  - Short segment of sidewalk on the west side of S.R. 501 from Otterbein Avenue to gas station entrance
- No designated bicycle facilities



Improve Modal  
Interrelationships





# Purpose and Need – Safety

- 167 crashes reported within the study area (2019 to 2023)
- S.R. 501 from 90-degree roadway curve to Industry Road was identified as a “high crash” segment



Enhance Safety



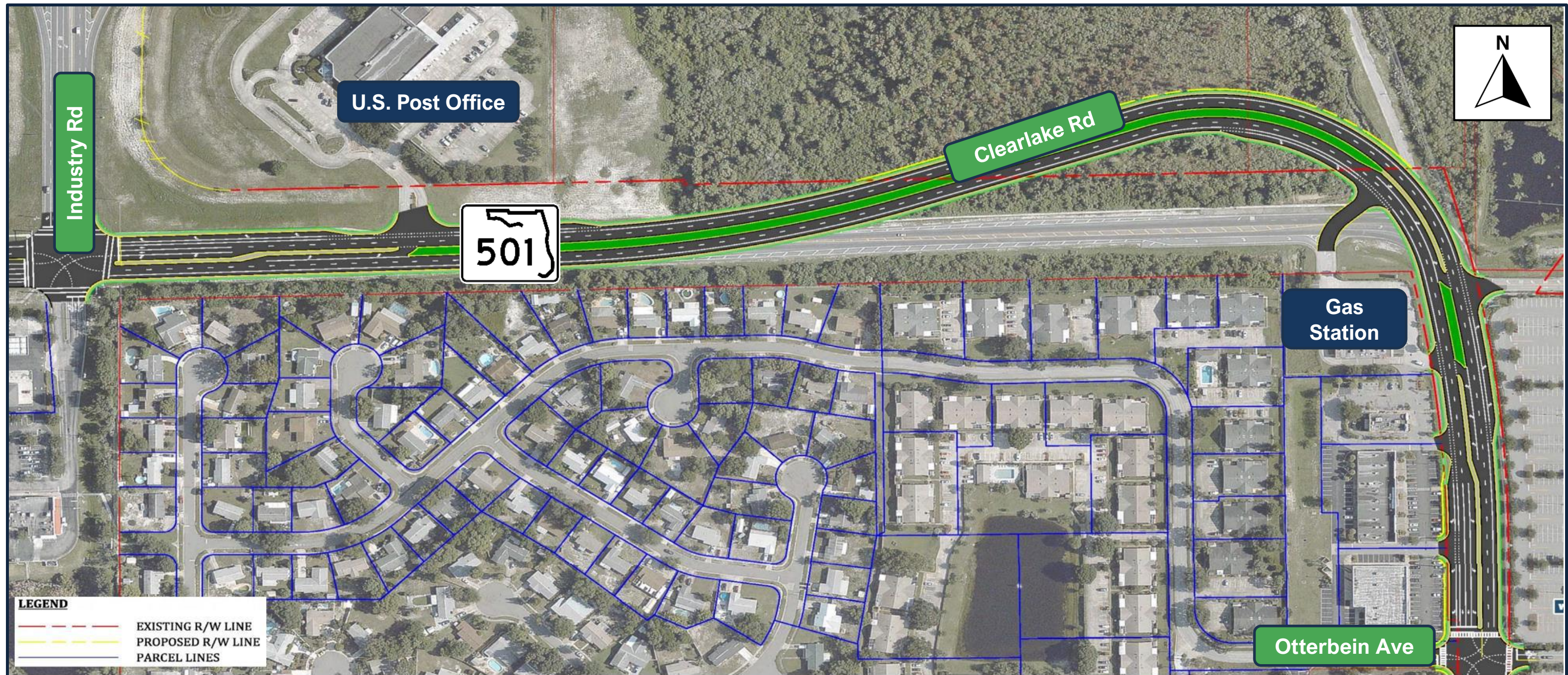
S.R. 501 Corridor



S.R. 501 @ 90-Degree Curve



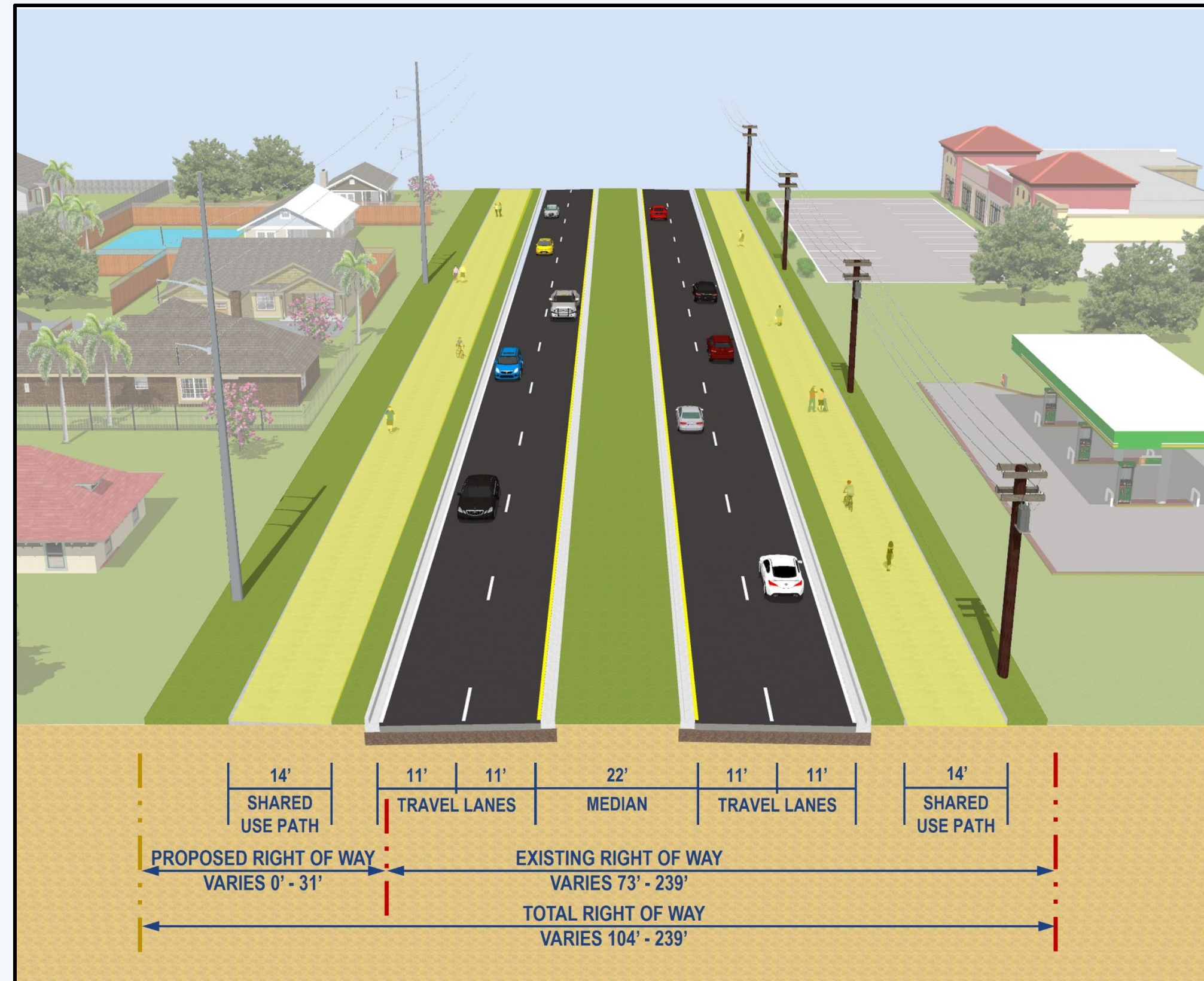
# 2017 PD&E Study Recommendation





# 2025 Preferred Alternative

- Two travel lanes in each direction
- 22-foot-wide median
- 14-foot-wide shared use paths
- Additional 31 feet right of way needed in certain areas





# 2025 Preferred Alternative



- Replaces the existing 90-degree curve with a roundabout

Legend	
	Property Lines
	Existing Right of Way
	Proposed Right of Way
	Proposed Roadway
	Proposed Shared Use Path
	Proposed Sod
	Proposed Pond
	Truck Apron
	Traffic Separator

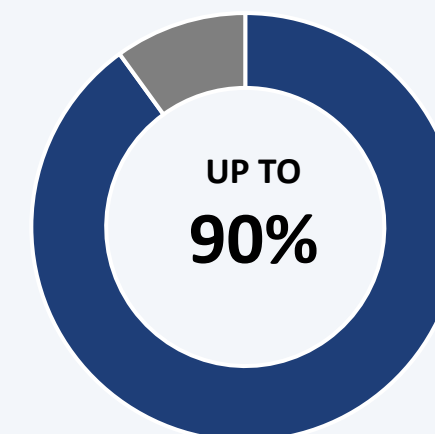


# Benefits of a Roundabout

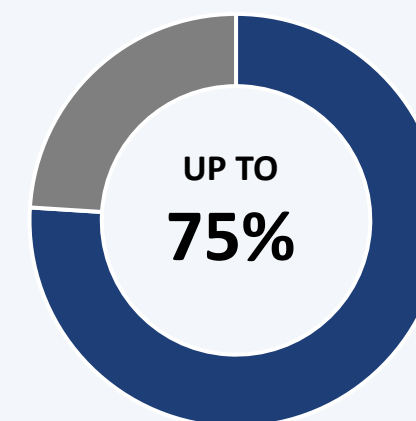
- **Improve traffic flow** by keeping drivers moving through the intersection, reducing congestion
- **Enhance safety** with fewer and less severe crashes due to reduced conflict points
- **Maintain functionality** during power outages, unlike signalized intersections
- **Offers cost efficiency** in construction and maintenance compared to traditional signalized intersections



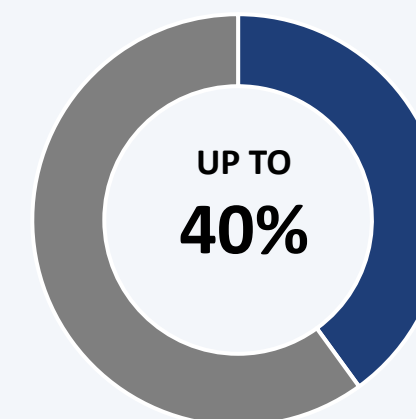
CAPACITY  
INCREASE



FEWER  
FATALITIES



FEWER  
INJURIES



FEWER PEDESTRIAN/  
BICYCLE CRASHES



# Access Management

- Widening will convert the roadway from a Class 4 (Non-Restrictive) to a Class 5 (Restrictive) facility.
- Median openings located at:
  - Michigan Avenue
  - Entrance to Woodland Commons
  - La Marche Drive





# Access Management

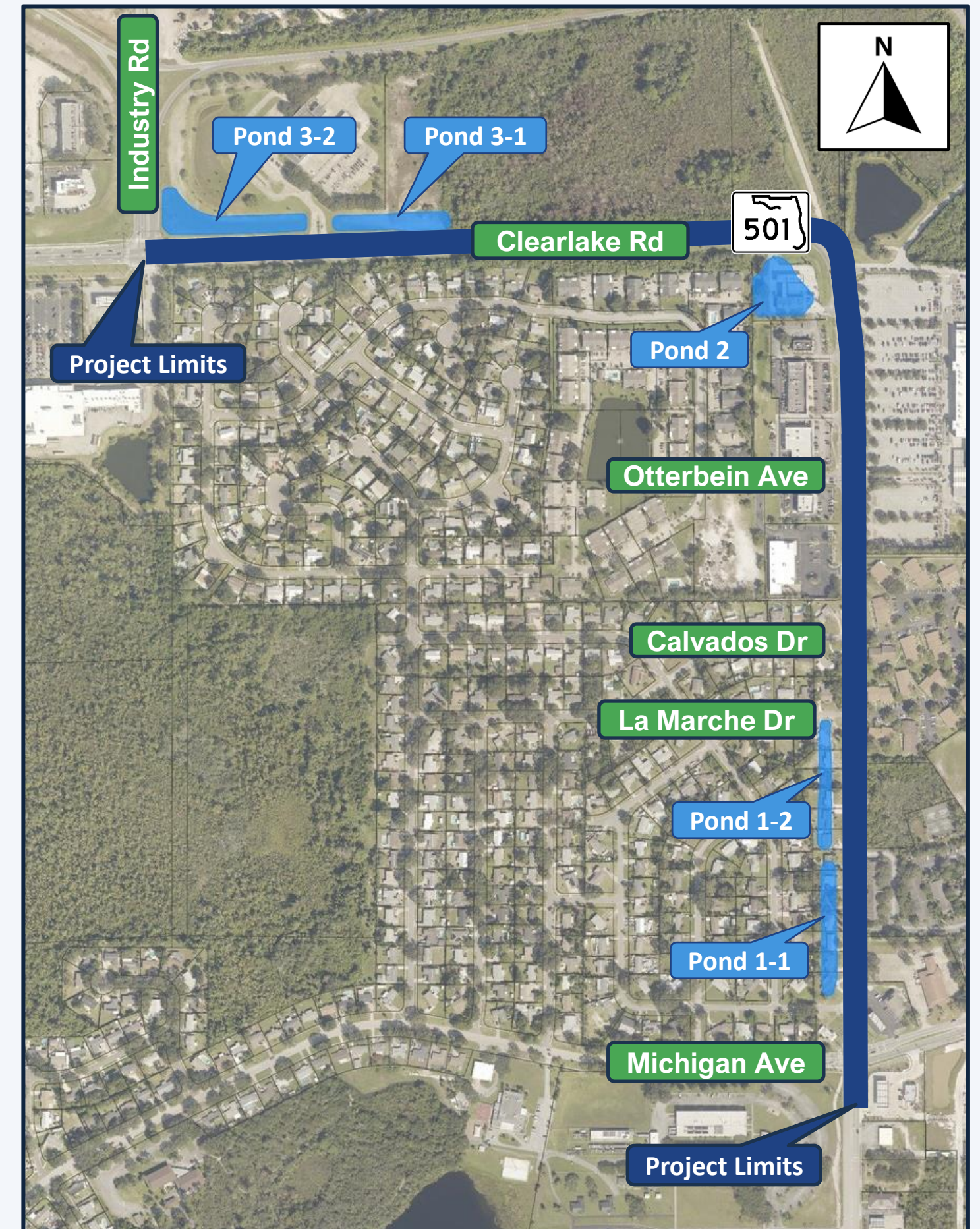
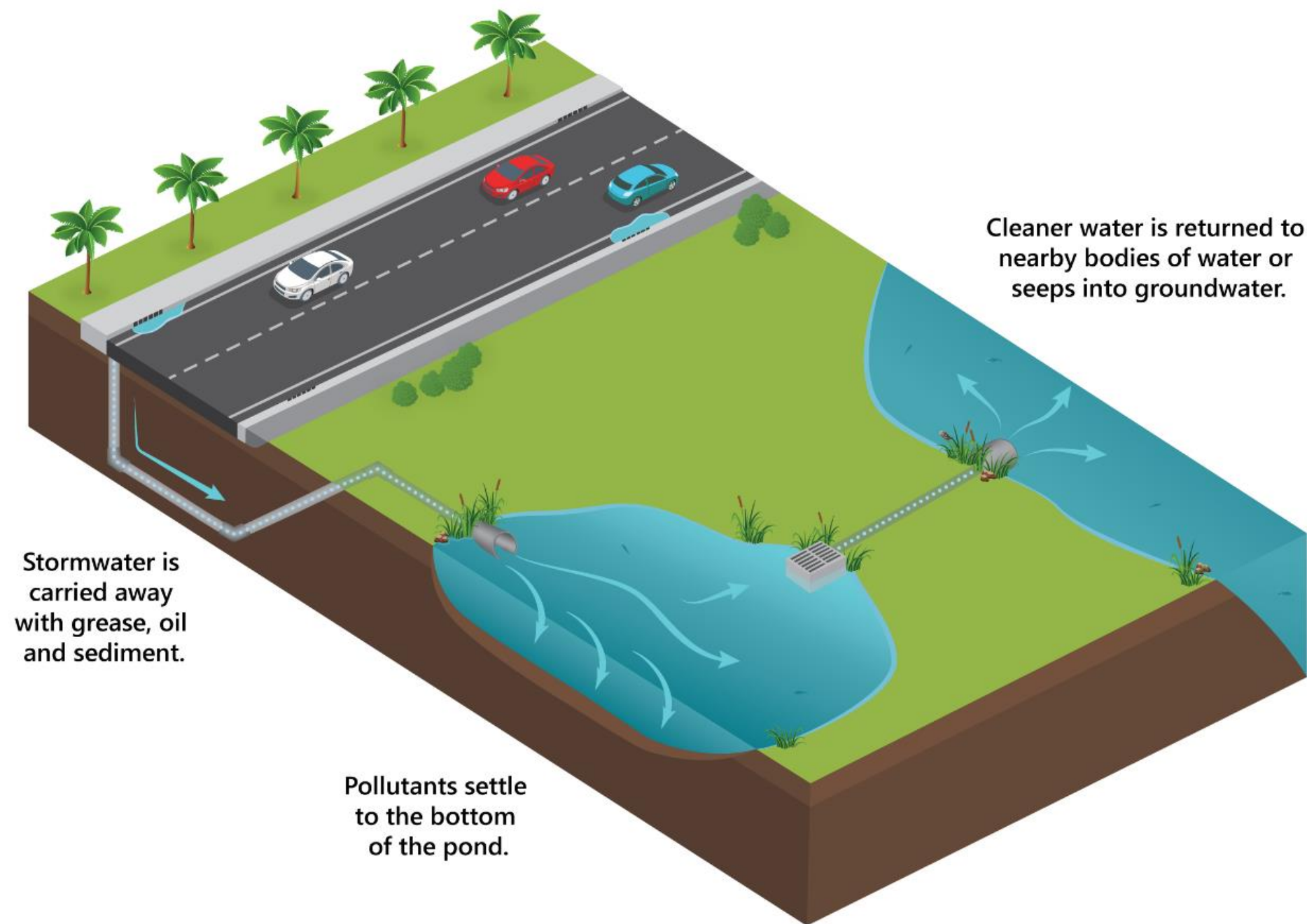
- Median openings located at:
  - Otterbein Avenue
  - 90-Degree Curve
  - U.S. Post Office Entrance
  - Industry Road





# Pond Sites

- Five Proposed Pond Sites





# Environmental Impacts

Potential effects to the social, physical, natural, and cultural environment were analyzed in accordance with state and federal regulations.



## SOCIAL AND ECONOMIC

- Social
- Aesthetic Affects
- Relocation Potential

## NATURAL

- Wetlands and Other Surface Waters
- Water Resources
- Floodplains
- Protected Species and Habitat

## PHYSICAL

- Highway Traffic Noise
- Air Quality
- Contamination

## CULTURAL

- Historical Sites/Resources
- Archaeological Sites



# Preferred Alternative Evaluation Matrix

		Preferred Alternative	No-Build Alternative
Purpose and Need	Accommodates Future Traffic Demand	Yes	No
	Improves Modal Interrelationships	Yes	No
	Enhances Safety	Yes	No
Social and Economic	Additional Right of Way (acres)	6.7	0
	Total Parcels Impacts	28	0
	Potential Residential Relocations	17	0
	Potential Business Displacements	2	0
Physical Resources	Adverse Impacts to Noise Sensitive Receptor Sites	14	0
	Utility Conflicts	Moderate	None
	Contamination Sites Impacts	9	0



# Preferred Alternative Evaluation Matrix

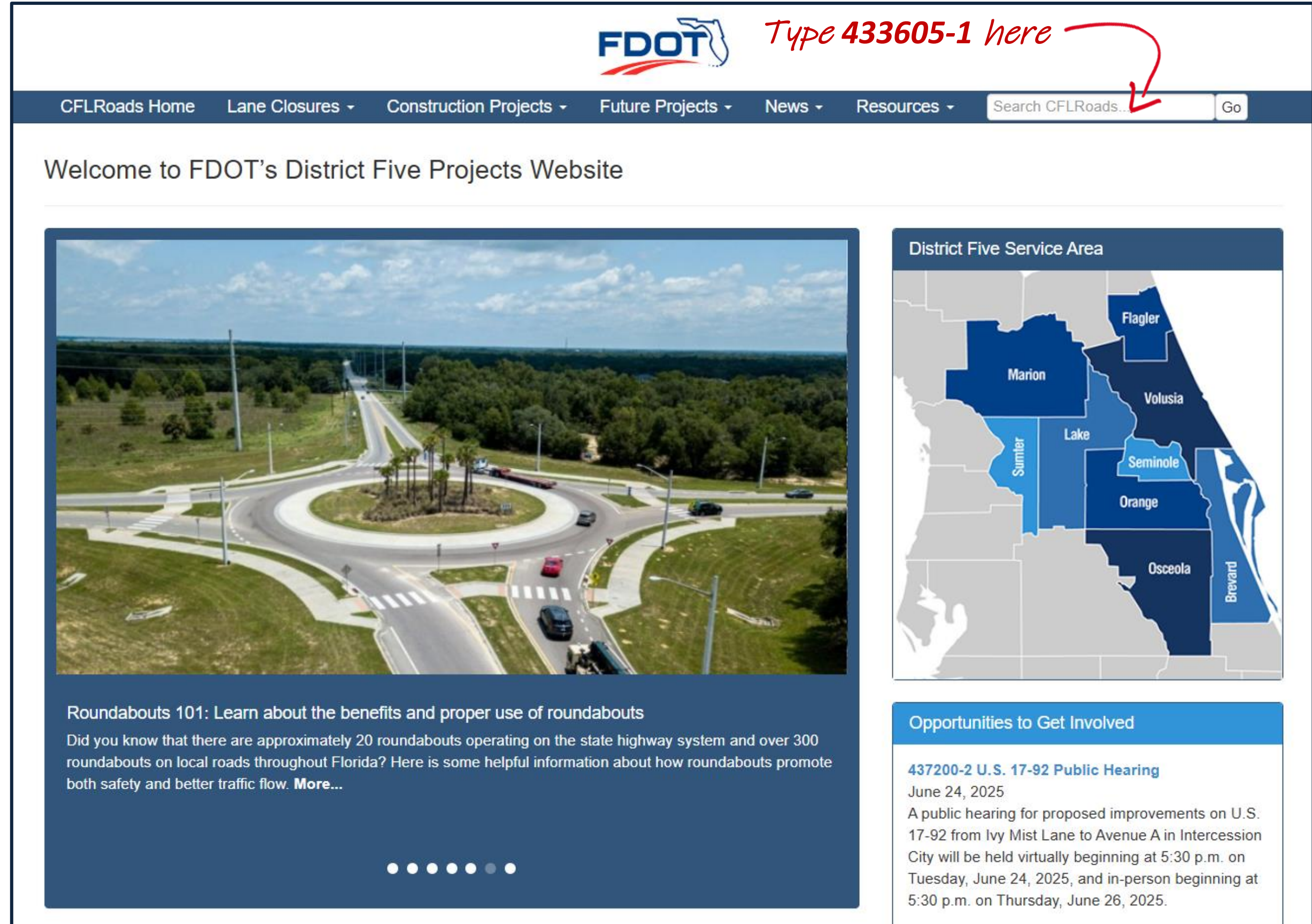
		Preferred Alternative	No-Build Alternative <sup>1</sup>
Natural Resources	Floodplain Impacts (acre-feet)	0	0
	Wetland Impacts (acres)	4.72	0
	Listed Species Involvement	Minor	None
Cultural Resources	National Register of Historic Places Impacts	0	0
Cost (million)	Design Cost	\$3.3	\$0
	Right of Way Cost	\$40.6	\$0
	Construction Cost	\$26.5	\$0
	Construction, Engineering, and Inspection	\$1.3	\$0
	Wetland Mitigation	\$0.2	\$0
	<b>Total Cost (million)*</b>	<b>\$71.9</b>	<b>\$0</b>

\* Subject to change



# Stay Informed

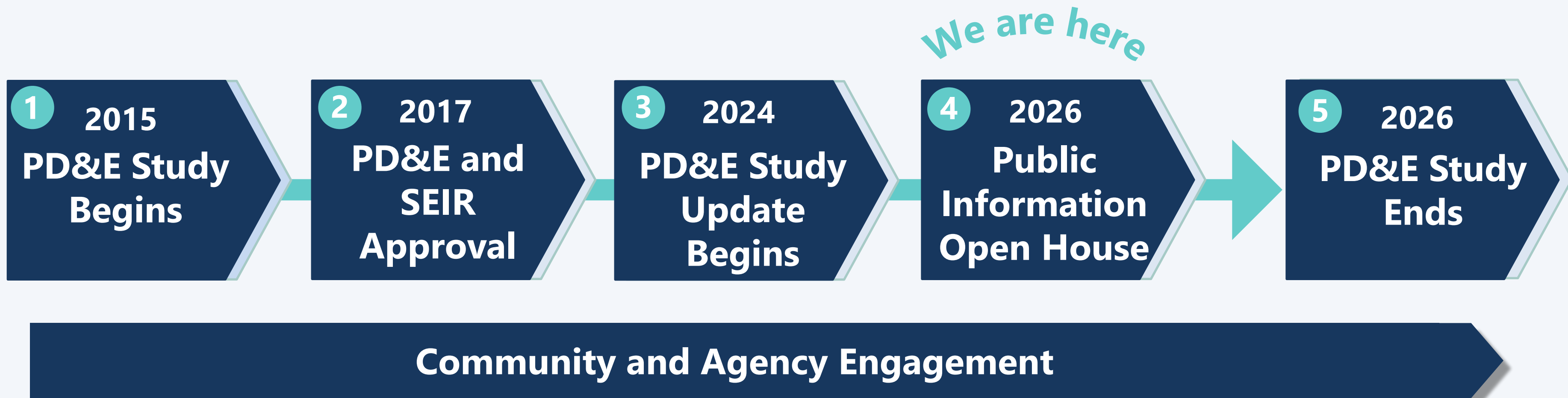
- Go to the project website on [www.cflroads.com](http://www.cflroads.com)
- Enter the project number 433605-1 in the search box at the top right and click “Go”



The screenshot shows the FDOT District Five Projects Website. At the top is the FDOT logo and a navigation bar with links: CFLRoads Home, Lane Closures, Construction Projects, Future Projects, News, and Resources. A search bar on the right contains the text "Type 433605-1 here" with a red arrow pointing to it, and a "Go" button. Below the navigation bar is a welcome message: "Welcome to FDOT's District Five Projects Website". The main content area features a large aerial photo of a roundabout. To the right of the photo is a map titled "District Five Service Area" showing counties: Marion, Sumter, Lake, Orange, Osceola, Volusia, Seminole, Flagler, and Brevard. Below the photo is a section titled "Roundabouts 101: Learn about the benefits and proper use of roundabouts" with a brief description and a "More..." link. At the bottom right is a section titled "Opportunities to Get Involved" with a link to "437200-2 U.S. 17-92 Public Hearing" and details about the hearing on June 24, 2025.



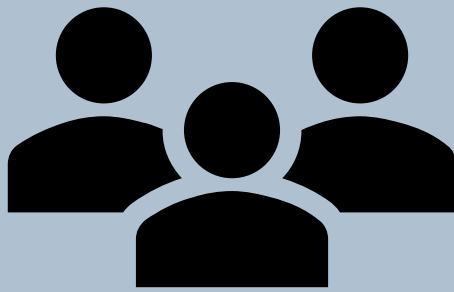
# PD&E Study Schedule





# We Want to Hear from You

- Speak with project team members
- Submit a written comment form
- Submit questions online at CFLRoads.com







## Contact the Project Manager

---



Jeanette.Maldonado@dot.state.fl.us



719 S. Woodland Blvd., MS 501  
DeLand, FL 32720



386-943-5211

[www.CFLRoads.com/project/433605-1](http://www.CFLRoads.com/project/433605-1)





# Title VI

Public participation is solicited without regard to race, color, national origin, age, sex, religion, disability, or family status. Persons wishing to express concerns relative to FDOT compliance with Title VI may do so by contacting:

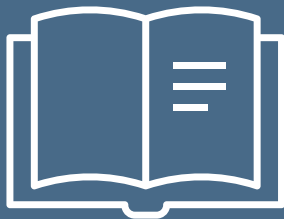


Melissa McKinney  
District Five Title VI Coordinator  
719 S. Woodland Blvd., MS 520  
DeLand, FL 32720  
386-943-5077  
[Melissa.McKinney@dot.state.fl.us](mailto:Melissa.McKinney@dot.state.fl.us)

Al Sanders  
Interim FDOT State Title VI Coordinator  
605 Suwannee St., MS 65  
Tallahassee, FL 32399  
850-414-4764  
[Aldrin.Sanders@dot.state.fl.us](mailto:Aldrin.Sanders@dot.state.fl.us)



# Public Notice



Florida Administrative  
Register



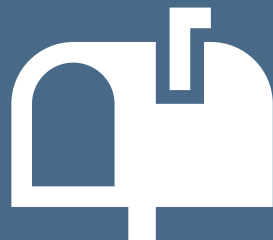
FDOT/project website



Newspaper



Social media



Property  
owner/tenant letters



Elected & Appointed  
Officials



Email to project  
contacts list



# National Environmental Policy Act (NEPA)

---

The environmental review, consultation, and other actions required by applicable federal environmental laws for this project are being, or have been, carried out by FDOT pursuant to 23 U.S.C. § 327 and a Memorandum of Understanding dated May 26, 2022, and executed by the Federal Highway Administration and FDOT.

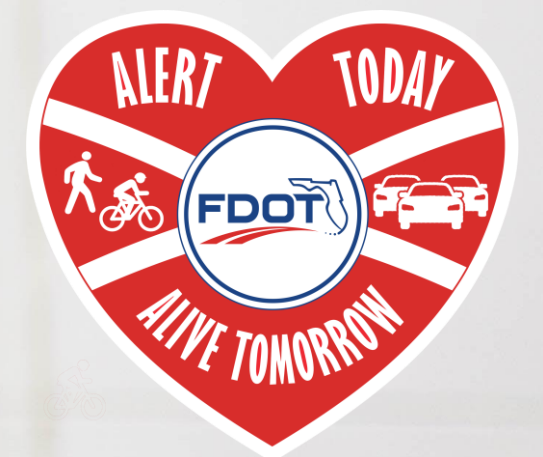


# THINK AHEAD

You only have seconds to react when approaching an intersection. Over 30% of all traffic fatalities occur from intersection-related crashes\*. Avoid distractions and stay alert so you're able to make a safe decision quickly.

**It Could Save Your Life.**

\*Sourced from the Florida Department of Transportation







# THANK YOU!

*This concludes the presentation.*

*We invite you to view the open house materials  
and exhibits and talk to the project team.*

*The presentation will begin again in a few  
minutes.*

*Please submit any questions or comments by  
**January 22, 2026***

FPID No.: 433605-1