



S.R.A1A Improvements

from South of International Drive to Long Point Road

Brevard County

Financial Project Identification (FPID) No.: 430202-5

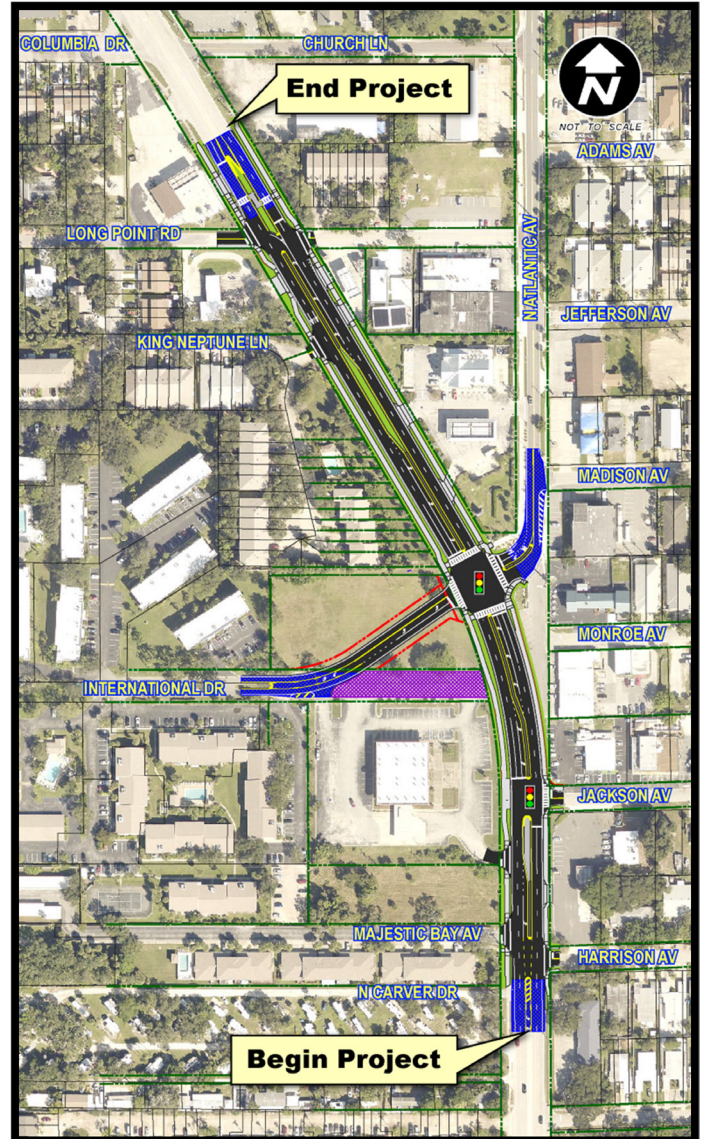
Project Description

The Florida Department of Transportation (FDOT) has revised the design plans for proposed improvements on State Road (S.R.) A1A from south of International Drive to Long Point Road in Cape Canaveral.

Goals of the project include creating a safer four-way intersection on S.R. A1A to replace the currently offset intersections with International Drive and North Atlantic Avenue. FDOT's design proposes to realign International Drive to create a traditional, four-legged signalized intersection at North Atlantic Avenue.

Other safety enhancements include reconstructing S.R. A1A on either side of the new intersection to provide two travel lanes in each direction, separated by a raised landscaped median. Pedestrian improvements include new 9-foot-wide sidewalks on both sides of the roadway and a new midblock crossing equipped with pedestrian activated beacons known as Rectangular Rapid Flashing Beacons (RRFBs).

The project has been designed to be consistent with planned future improvements north of the project. Those enhancements are being designed under a separate project (FPID No. 430202-8), which is not yet funded for construction.



Contact:

Jude Jean-Francois
386-943-5487

Jude.Jean-Francois@dot.state.fl.us

www.CFLRoads.com/Project/430202-5

Project Status & Costs*

Design	Completion summer 2026	\$ 2.3 Million
Right of Way	Completion early 2027	\$ 6.1 Million
Construction	Funded summer 2027	\$ 9.4 Million

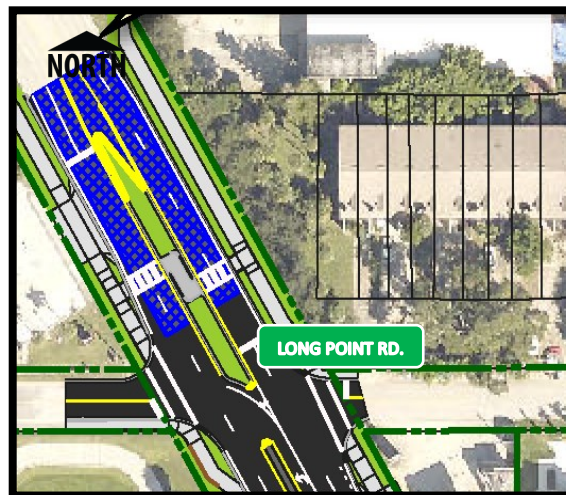
*Subject to change



Mid-Block Crossing

North of Long Point Road, the project will construct a midblock crossing with pedestrian-activated beacons at both ends of the crosswalk and in the median.

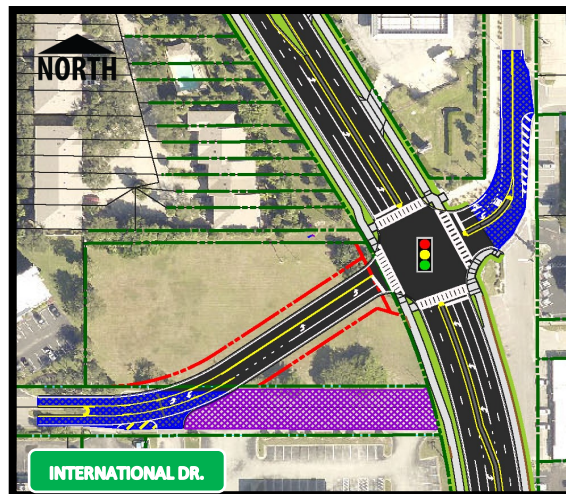
The reconstructed bi-directional median will provide a pedestrian refuge and new crosswalk striping. The Rectangular Rapid Flashing Beacon (RRFB) will remain dark until activated by a pedestrian wishing to cross.



Intersection Alignment

Currently, International Drive connects to S.R. A1A just south of the S.R. A1A and North Atlantic Avenue intersection. This project will realign International Drive to create a traditional four-legged intersection on S.R. A1A at North Atlantic Avenue.

International Drive will include two 11-foot-wide travel lanes and a 12-foot-wide left-turn lane. The signal timing will be updated to include International Drive in the signal phases including a left turn arrow.



HOW TO USE AN RRFB

(Rectangular Rapid Flashing Beacon)

Pedestrians and Bicyclists

Press the button to activate the RRFB signals; the lights will begin to flash indicating to motorists a pedestrian is ready to cross.

Pedestrians

1. Make eye contact with motorists to be sure traffic is yielding before entering the crosswalk.
2. Walk defensively, scanning both directions to be sure motorists see you.
3. Always scan the road while crossing making sure all vehicles have stopped.

Bicyclists

1. Obey all traffic signs and signals.
2. When using the crosswalk, follow the pedestrian rules.
3. When using the travel lane, ride in the direction of traffic and always yield to pedestrians.

www.AlertTodayFlorida.com

Funded by the Florida Department of Transportation

HOW TO USE AN RRFB

(Rectangular Rapid Flashing Beacon)

Motorists

Always stop for pedestrians and bicyclists at crosswalks.

1. Anticipate pedestrians crossing when approaching an RRFB.
2. Never pass another vehicle that has stopped or is slowing down at a crosswalk.
3. Always stop before the stop bar (line) pavement markings.
4. Never stop in or block a crosswalk.
5. Always stop for pedestrians entering or in a crosswalk.
6. Remain stopped for pedestrians regardless of activated RRFBs.
7. Wait for pedestrians to completely clear the crosswalk on your side of the road, and for anyone crossing into your lanes from the other direction.

FAST FACT
RRFBs use an irregular flash pattern that is similar to emergency flashers on police vehicles.

(Source: FHWA, 2008)

Rectangular Rapid Flashing Beacon (RRFB)

While motorists are legally required to stop for pedestrians in any crosswalk in Florida, Rectangular Rapid Flashing Beacons, or RRFBs, are installed to bring more visibility to the marked crosswalk and enhance safety.

RRFBs have two rapid flashing yellow lights mounted below a yellow pedestrian crossing sign. The flashing lights remain dark until activated by a pedestrian wishing to cross.

Cars should stop when a pedestrian is in the walkway. Pedestrians should make sure all vehicles are stopped or the road is clear before entering the crosswalk.