



U.S. 17-92 PD&E Study

From Ivy Mist Lane to Avenue A

Osceola County

Financial Project Identification (FPID) Number: 437200-2



Project Description

The Florida Department of Transportation (FDOT) is conducting a Project Development and Environment (PD&E) Study to evaluate improvements to U.S. 17-92 from Ivy Mist Lane to Avenue A, including alternatives to widen the existing two-lane roadway to four lanes.

The purpose of this study is to address current and future travel demand and improve safety. The project is approximately 3.8 miles in length, extending through the communities of Poinciana and Intercession City.

The PD&E Study will determine the location and conceptual design of the preferred roadway improvements and the associated social, economic, and environmental effects of the proposed improvements.

The study recommendations include:

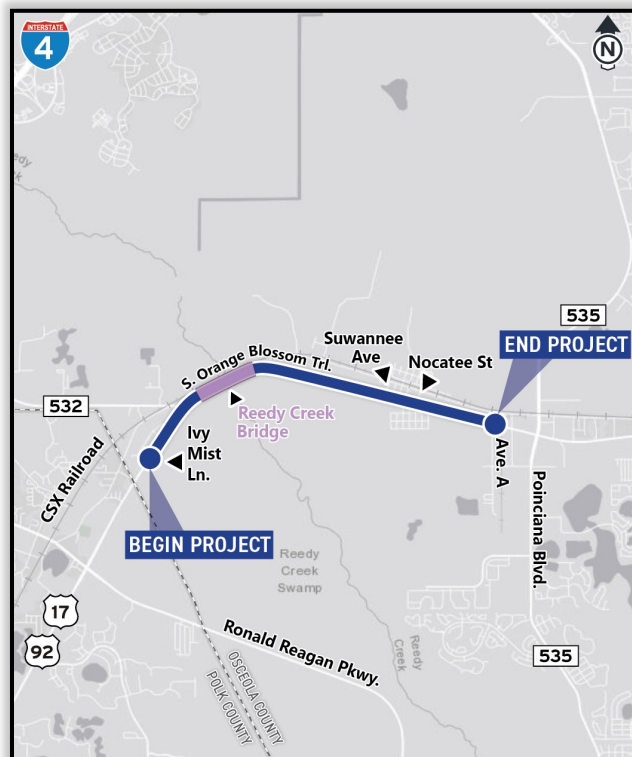
- Widening
- Addition of raised medians
- Shared use paths
- Intersection improvements
- Pedestrian crossing features
- Stormwater treatment

The preferred alternative and the analysis results are being shared with the community through stakeholder meetings and a public hearing.

Preferred Alternative

The PD&E Study is evaluating two alternatives:

- No Build Alternative — Maintains the existing conditions and includes planned projects in the study area.
- Build Alternative — Expands the roadway to four lanes (two lanes in each direction) throughout the study limits.



Contact Information:

David Graeber
FDOT Project Manager
386-943-5392
David.Graeber@dot.state.fl.us

CFLRoads.com

Project Status & Estimated Costs*

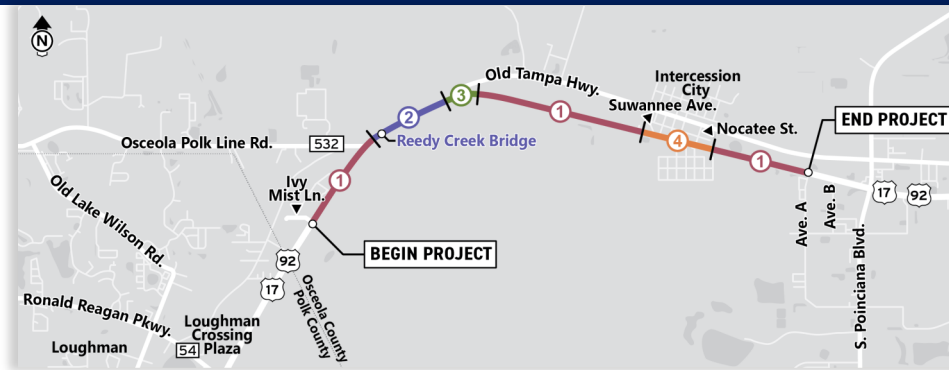
PD&E Study:	Ongoing; completion in 2025	\$ 1.7 million
Design:	Funded; Fiscal Year 2026	\$ 8.8 million
Right of Way:	Unfunded	\$ 77.1 million
Construction:	Unfunded	\$ 117.9 million

***subject to change**

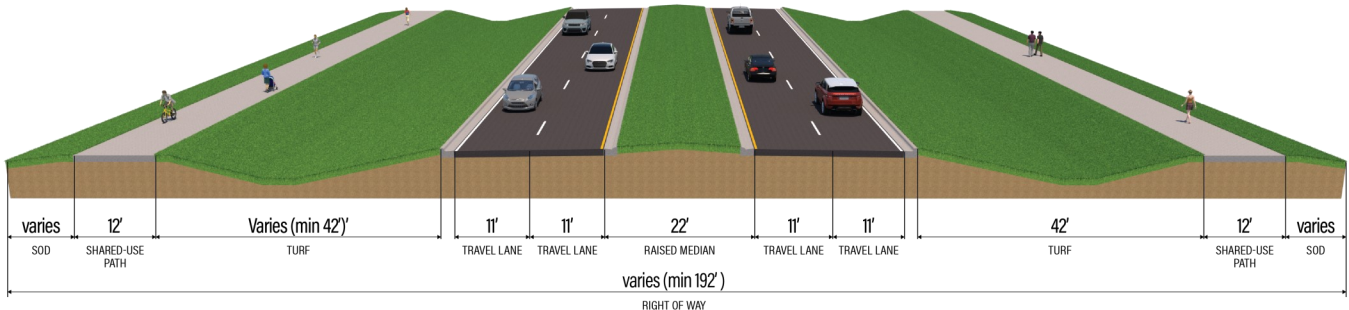
Public participation is solicited without regard to race, color, national origin, age, sex, religion, disability, or family status. Persons wishing to express their concerns relative to FDOT compliance with Title VI may do so by contacting Melissa McKinney, FDOT District Five Title VI Coordinator, at Melissa.McKinney@dot.state.fl.us.

Preferred Typical Sections

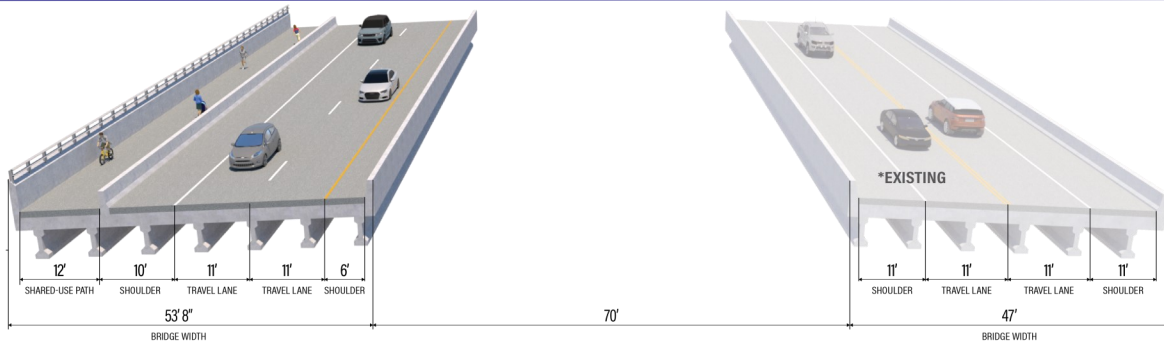
There are four typical sections, shown below, identified as part of the preferred alternative. The map to the right indicates the location that each typical section is being applied.



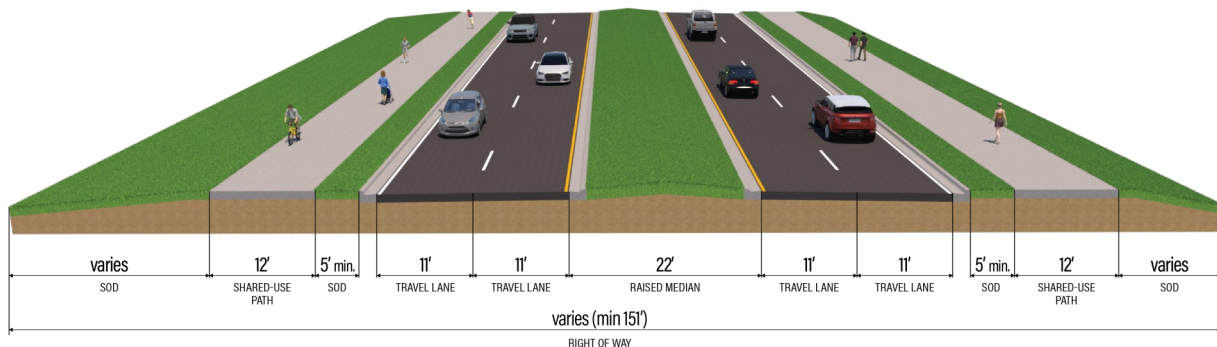
1 Typical Section 1 — Ivy Mist Lane to Reedy Creek Bridge, East of Old Tampa Highway to Suwannee Avenue, and Nocatee Street to Avenue A



2 Typical Section 2 — Reedy Creek Bridge



3 Typical Section 3 — Just East of Reedy Creek Bridge to East of Old Tampa Highway



4 Typical Section 4 — West of Suwannee Avenue to Nocatee Street

