

CONTRACT PLANS

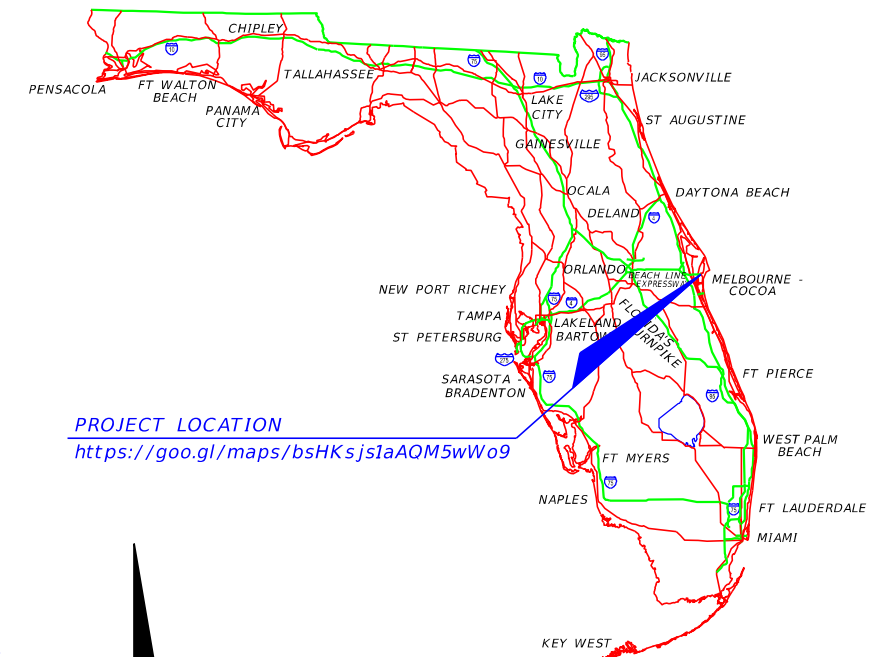
FINANCIAL PROJECT ID 444787-1-22-01

BREVARD COUNTY (70080)

STATE ROAD NO. 401

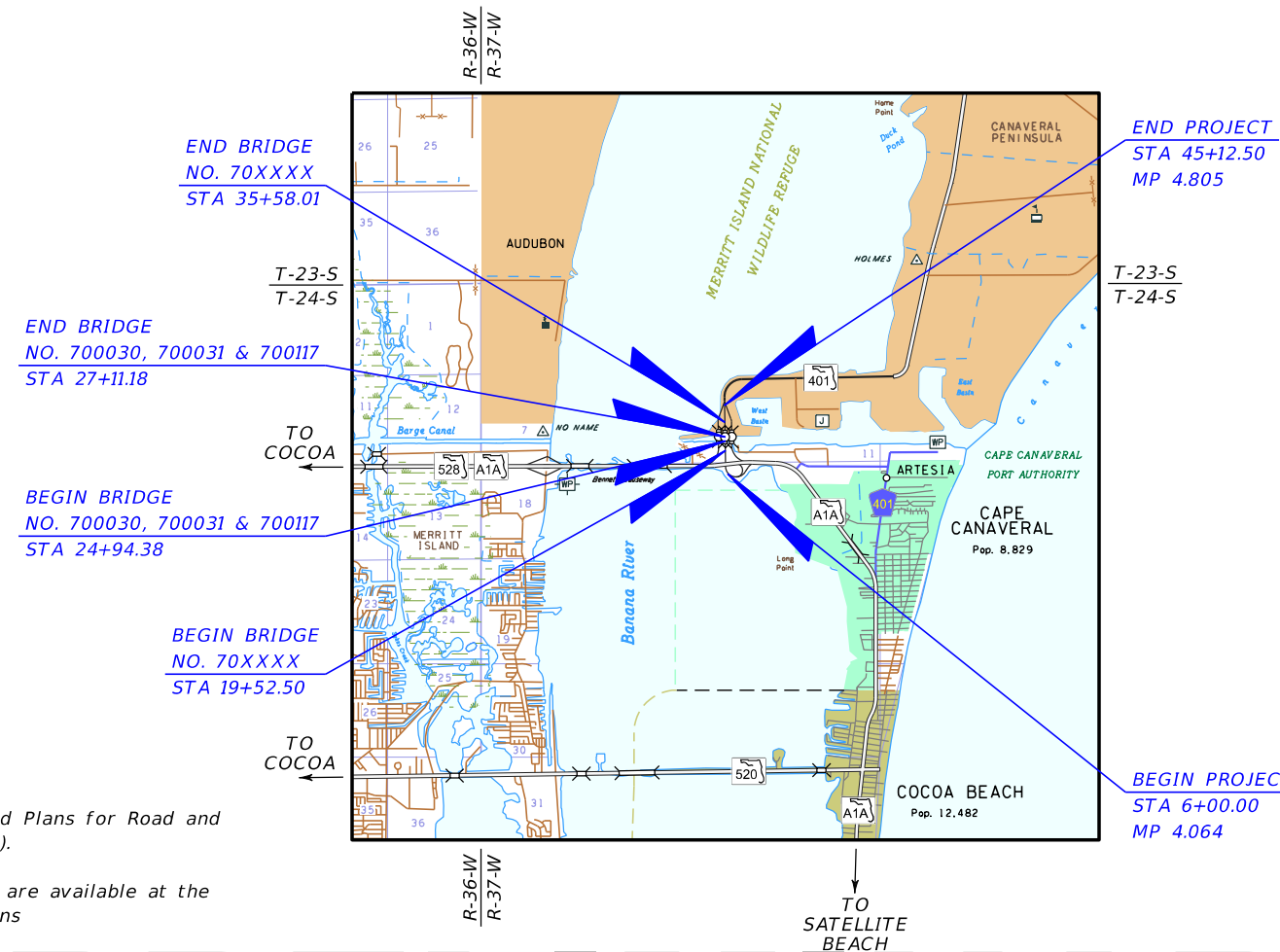
INDEX OF ROADWAY PLANS

| SHEET NO. | SHEET DESCRIPTION |
|-----------|---------------------------|
| 1 | KEY SHEET |
| 2-5 | TYPICAL SECTION |
| 6-10 | ROADWAY PLAN |
| 11-16 | ROADWAY PROFILE |
| 17-18 | BRIDGE PLAN AND ELEVATION |
| 19 | BRIDGE TYPICAL SECTION |
| 20 | BRIDGE RENDERING |



PROJECT LOCATION

<https://goo.gl/maps/bsHKsjs1aAQM5wWo9>



GOVERNING STANDARD PLANS:

Florida Department of Transportation, FY2022-23 Standard Plans for Road and Bridge Construction and applicable Interim Revisions (IRs).

Standard Plans for Road Construction and associated IRs are available at the following website: <http://www.fdot.gov/design/standardplans>

APPLICABLE IRs: IR____-

Standard Plans for Bridge Construction are included in the Structures Plans Component

GOVERNING STANDARD SPECIFICATIONS:

Florida Department of Transportation, July 2022 Standard Specifications for Road and Bridge Construction at the following website: <http://www.fdot.gov/programmanagement/Implemented/SpecBooks>

ROADWAY PLANS
ENGINEER OF RECORD:

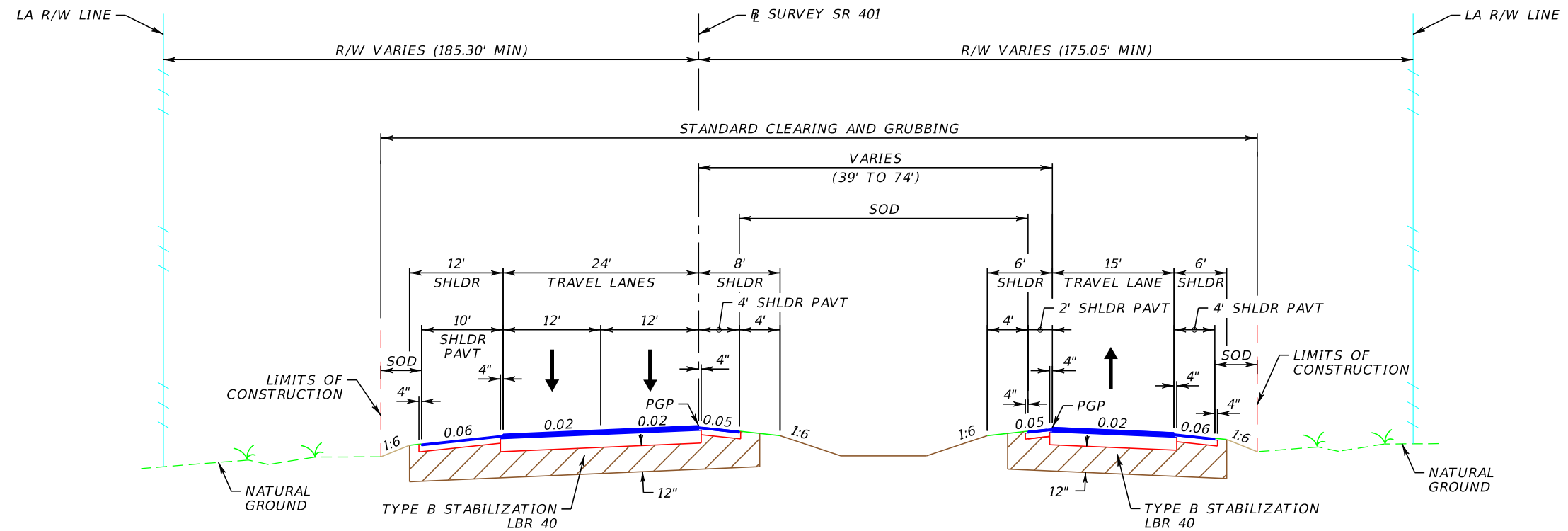
ALEJANDRO A. BARRIOS, P.E. NO.: 75972
PARSONS TRANSPORTATION GROUP, INC.
201 EAST PINE STREET, SUITE 900
ORLANDO, FL 32801
CONTRACT NO: CAC72
VENDOR NO. F360982270

FDOT PROJECT MANAGER:

MARY MCGEHEE

PRELIMINARY

| CONSTRUCTION CONTRACT NO. | FISCAL YEAR | SHEET NO. |
|---------------------------|-------------|-----------|
| TBD | 23 | 1 |



TYPICAL SECTION
 SR 401 (SOUTH OF CANAVERAL BARGE CANAL)
 STA. 6+00.00 TO STA. 21+87.44

TRAFFIC DATA

CURRENT YEAR = 2019 AADT = 6,900
 ESTIMATED OPENING YR. = 2030 AADT = 12,600
 ESTIMATED DESIGN YR. = 2050 AADT = 15,800
 K = 9% D = 56% T = 18% (24 HOUR)
 DESIGN HOUR T = 9%
 DESIGN SPEED = 45 MPH
 CONTEXT CLASSIFICATION = C3C

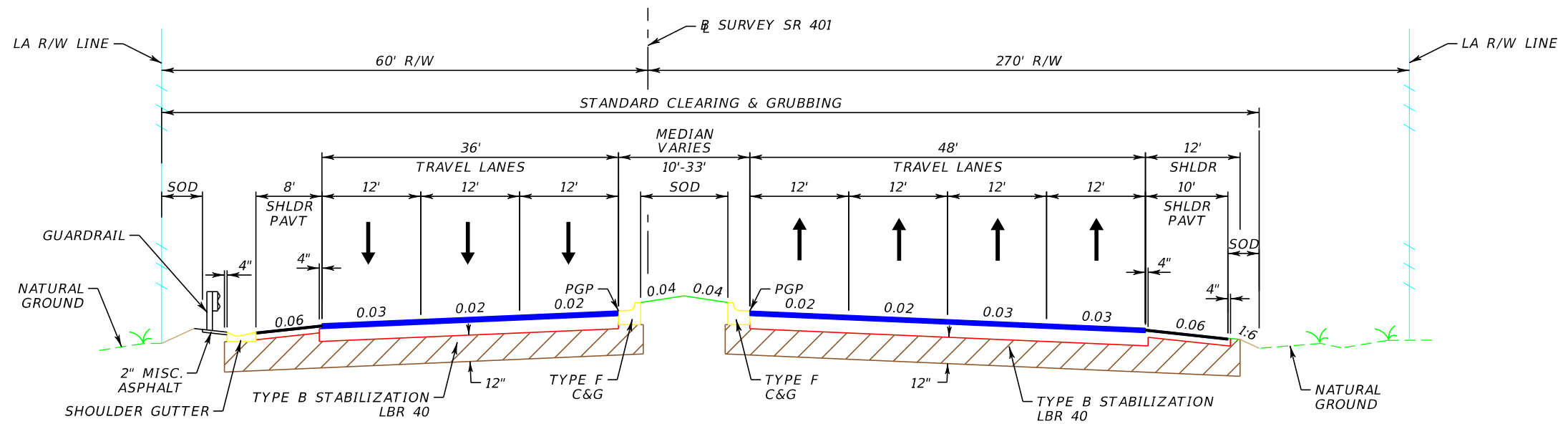
CLEAR ZONE = 24'

PRELIMINARY

| REVISIONS | | | | ALEJANDRO A. BARRIOS, P.E. P.E. LICENSE NO. 75972 PARSONS TRANSPORTATION GROUP, INC. 201 E. PINE STREET, SUITE 900 ORLANDO, FL 32801 PHONE: (407) 702-6800 | STATE OF FLORIDA DEPARTMENT OF TRANSPORTATION | | | SHEET NO. 2 |
|-----------|-------------|------|----------|---|--|----------------------|--|-----------------------|
| DATE | DESCRIPTION | DATE | ROAD NO. | | COUNTY | FINANCIAL PROJECT ID | | |
| | | | SR 401 | | BREVARD | 444787-1-22-01 | | |

TYPICAL SECTION

THE OFFICIAL RECORD OF THIS SHEET IS THE ELECTRONIC FILE DIGITALLY SIGNED AND SEALED UNDER RULE 61G15-23.004, F.A.C.



TYPICAL SECTION
 SR 401 (NORTH OF CANAVERAL BARGE CANAL)
 STA. 21+87.44 TO STA. 45+12.50

TRAFFIC DATA

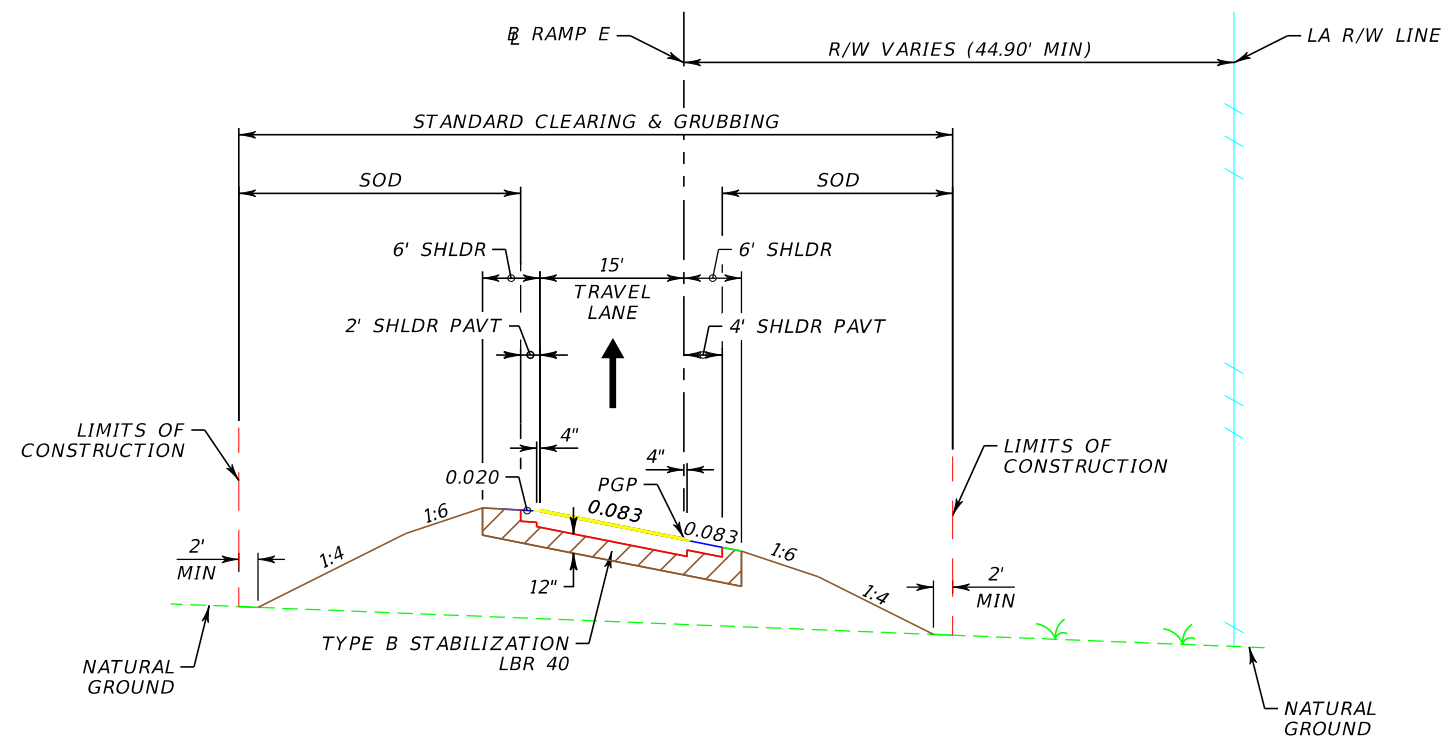
CURRENT YEAR = 2019 AADT = 13,200
 ESTIMATED OPENING YR. = 2030 AADT = 24,000
 ESTIMATED DESIGN YR. = 2050 AADT = 30,000
 K = 9% D = 52% T = 19% (24 HOUR)
 DESIGN HOUR T = 9%
 DESIGN SPEED = 45 MPH
 CONTEXT CLASSIFICATION = C3C

CLEAR ZONE = 24'

PRELIMINARY

| REVISIONS | | | | ALEJANDRO A. BARRIOS, P.E. P.E. LICENSE NO. 75972 PARSONS TRANSPORTATION GROUP, INC. 201 E. PINE STREET, SUITE 900 ORLANDO, FL 32801 PHONE: (407) 702-6800 | STATE OF FLORIDA DEPARTMENT OF TRANSPORTATION | | | SHEET NO. 3 |
|-----------|-------------|------|-------------|---|--|---------|----------------------|-----------------------|
| DATE | DESCRIPTION | DATE | DESCRIPTION | | ROAD NO. | COUNTY | FINANCIAL PROJECT ID | |
| | | | | | SR 401 | BREVARD | 444787-1-22-01 | |

TYPICAL SECTION



TYPICAL SECTION
 SB EXIT RAMP E
 STA. 506+91.20 TO STA. 527+77.87

TRAFFIC DATA

CURRENT YEAR = 2019 AADT = 3,700
 ESTIMATED OPENING YR. = 2030 AADT = 6,700
 ESTIMATED DESIGN YR. = 2050 AADT = 8,500
 K = 9% D = 100% T = 26% (24 HOUR)
 DESIGN HOUR T = 13%
 DESIGN SPEED = 45-50 MPH
 CONTEXT CLASSIFICATION = C3C

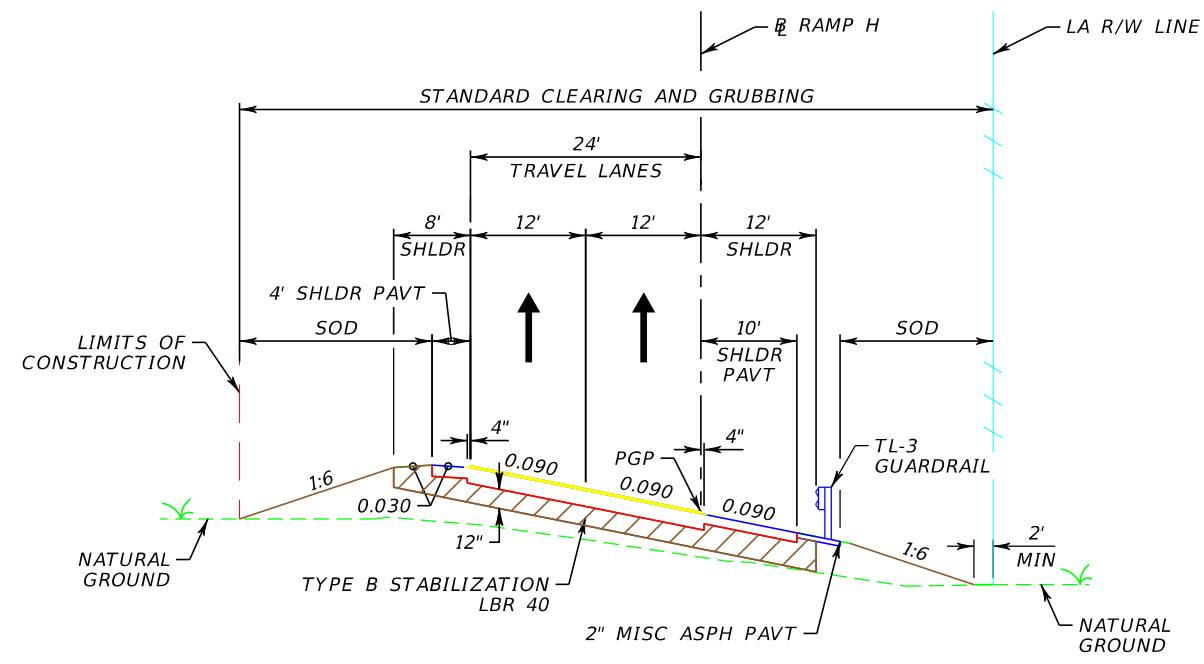
CLEAR ZONE = 14'

PRELIMINARY

| REVISIONS | | | | ALEJANDRO A. BARRIOS, P.E. P.E. LICENSE NO. 75972 PARSONS TRANSPORTATION GROUP, INC. 201 E. PINE STREET, SUITE 900 ORLANDO, FL 32801 PHONE: (407) 702-6800 | STATE OF FLORIDA DEPARTMENT OF TRANSPORTATION | | | SHEET NO. 4 |
|-----------|-------------|------|-------------|---|--|---------|----------------------|-----------------------|
| DATE | DESCRIPTION | DATE | DESCRIPTION | | ROAD NO. | COUNTY | FINANCIAL PROJECT ID | |
| | | | | | SR 401 | BREVARD | 444787-1-22-01 | |

TYPICAL SECTION

THE OFFICIAL RECORD OF THIS SHEET IS THE ELECTRONIC FILE DIGITALLY SIGNED AND SEALED UNDER RULE 61G15-23.004, F.A.C.



TYPICAL SECTION
NB ENTRANCE RAMP H

STA. 806+75.54 TO STA. 819+57.85

TRAFFIC DATA

CURRENT YEAR = 2019 AADT = 2,600
 ESTIMATED OPENING YR. = 2030 AADT = 4,700
 ESTIMATED DESIGN YR. = 2050 AADT = 5,700
 K = 9% D = 100% T = 12% (24 HOUR)
 DESIGN HOUR T = 6%
 DESIGN SPEED = 45-50 MPH
 CONTEXT CLASSIFICATION = C3C

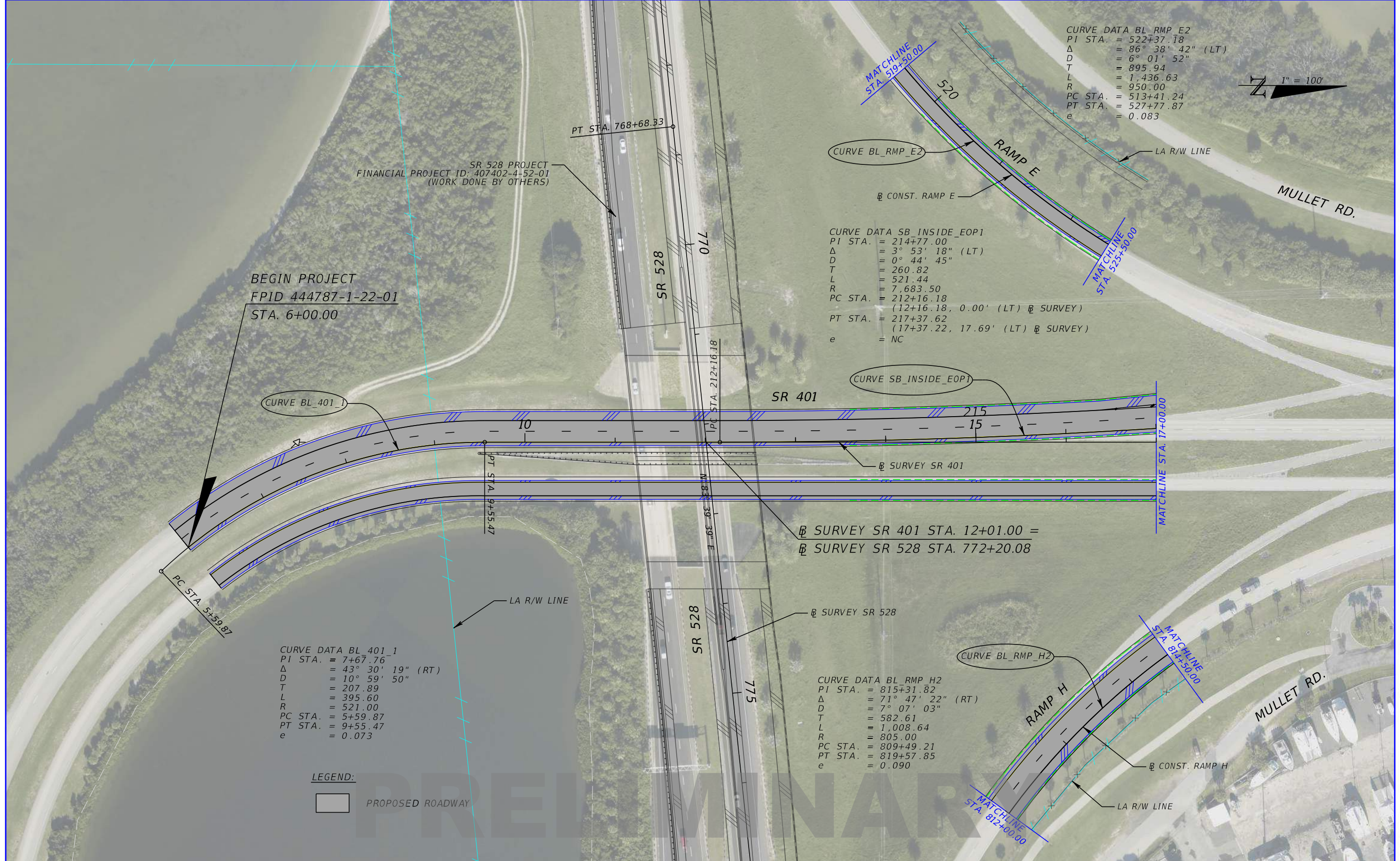
CLEAR ZONE = 24'

PRELIMINARY

| REVISIONS | | | | ALEJANDRO A. BARRIOS, P.E. P.E. LICENSE NO. 75972 PARSONS TRANSPORTATION GROUP, INC. 201 E. PINE STREET, SUITE 900 ORLANDO, FL 32801 PHONE: (407) 702-6800 | STATE OF FLORIDA DEPARTMENT OF TRANSPORTATION | | | SHEET NO. 5 |
|-----------|-------------|------|-------------|---|--|---------|----------------------|-----------------------|
| DATE | DESCRIPTION | DATE | DESCRIPTION | | ROAD NO. | COUNTY | FINANCIAL PROJECT ID | |
| | | | | | SR 401 | BREVARD | 444787-1-22-01 | |

TYPICAL SECTION

THE OFFICIAL RECORD OF THIS SHEET IS THE ELECTRONIC FILE DIGITALLY SIGNED AND SEALED UNDER RULE 61G15-23.004, F.A.C.



CURVE DATA BL_RMP_E2
 PI STA. = 522+37.18
 Δ = 86° 38' 42" (LT)
 D = 6° 01' 52"
 T = 895.94
 L = 1,436.63
 R = 950.00
 PC STA. = 513+41.24
 PT STA. = 527+77.87
 e = 0.083

CURVE DATA SB_INSIDE_EOP1
 PI STA. = 214+77.00
 Δ = 3° 53' 18" (LT)
 D = 0° 44' 45"
 T = 260.82
 L = 521.44
 R = 7,683.50
 PC STA. = 212+16.18
 (12+16.18, 0.00' (LT) @ SURVEY)
 PT STA. = 217+37.62
 (17+37.22, 17.69' (LT) @ SURVEY)
 e = NC

CURVE DATA BL_401_1
 PI STA. = 7+67.76
 Δ = 43° 30' 19" (RT)
 D = 10° 59' 50"
 T = 207.89
 L = 395.60
 R = 521.00
 PC STA. = 5+59.87
 PT STA. = 9+55.47
 e = 0.073

CURVE DATA BL_RMP_H2
 PI STA. = 815+31.82
 Δ = 71° 47' 22" (RT)
 D = 7° 07' 03"
 T = 582.61
 L = 1,008.64
 R = 805.00
 PC STA. = 809+49.21
 PT STA. = 819+57.85
 e = 0.090

LEGEND:
 [Symbol] PROPOSED ROADWAY

| REVISIONS | | | |
|-----------|-------------|------|-------------|
| DATE | DESCRIPTION | DATE | DESCRIPTION |
| | | | |

ALEJANDRO A. BARRIOS, P.E.
 P.E. LICENSE NO. 75972
 PARSONS TRANSPORTATION GROUP, INC.
 201 E. PINE STREET, SUITE 900
 ORLANDO, FL 32801
 PHONE: (407) 702-6800

| | | |
|--|---------|----------------------|
| STATE OF FLORIDA DEPARTMENT OF TRANSPORTATION | | |
| ROAD NO. | COUNTY | FINANCIAL PROJECT ID |
| SR 401 | BREVARD | 444787-1-22-01 |

ROADWAY PLANS

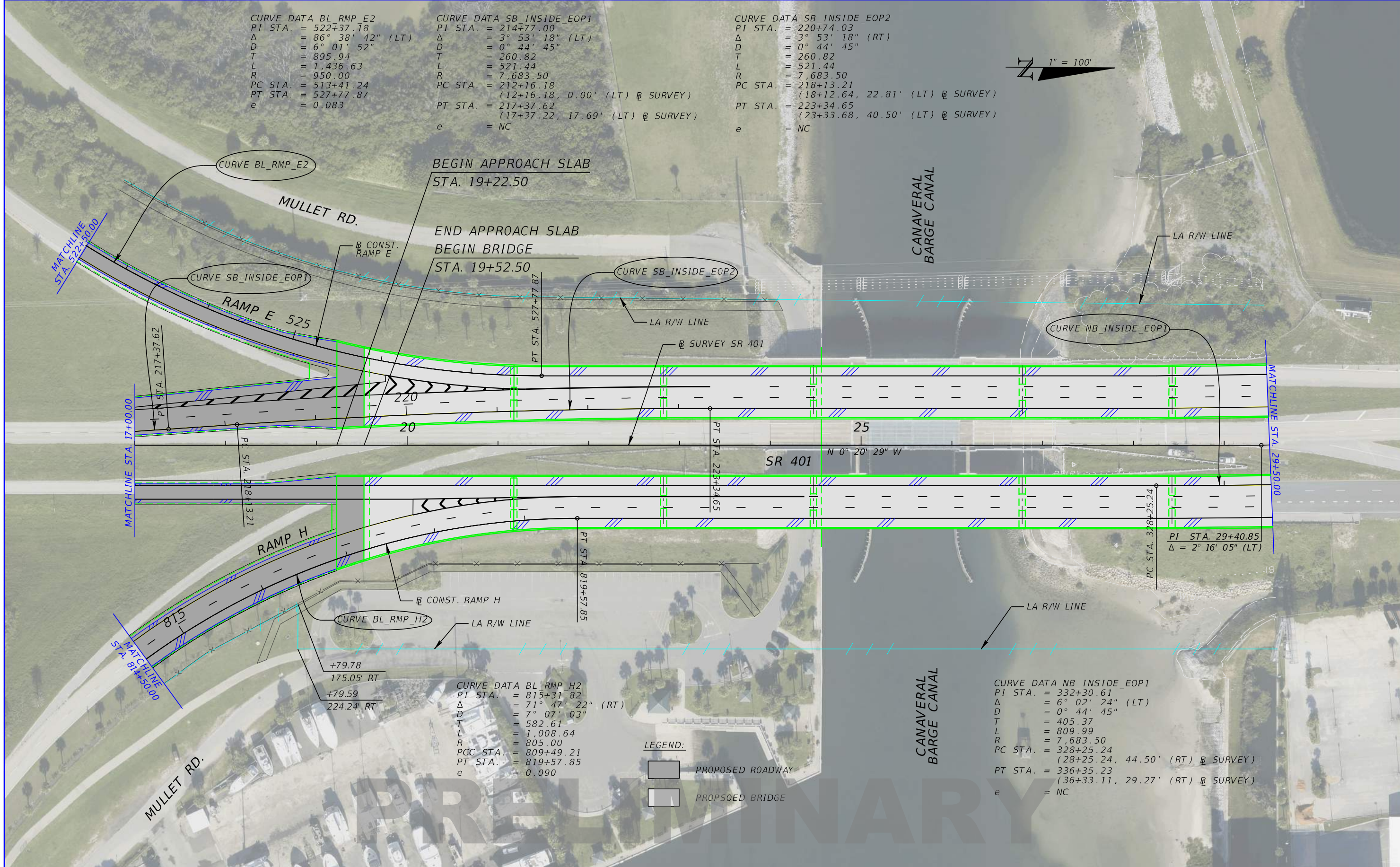
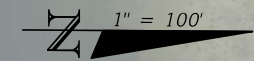
SHEET NO.
6

THE OFFICIAL RECORD OF THIS SHEET IS THE ELECTRONIC FILE DIGITALLY SIGNED AND SEALED UNDER RULE 61G15-23.004, F.A.C.

CURVE DATA BL_RMP_E2
 PI STA. = 522+37.18
 Δ = 86° 38' 42" (LT)
 D = 6° 01' 52"
 T = 895.94
 L = 1,436.63
 R = 950.00
 PC STA. = 513+41.24
 PT STA. = 527+77.87
 e = 0.083

CURVE DATA SB_INSIDE_EOP1
 PI STA. = 214+77.00
 Δ = 3° 53' 18" (LT)
 D = 0° 44' 45"
 T = 260.82
 L = 521.44
 R = 7,683.50
 PC STA. = 212+16.18
 (12+16.18, 0.00' (LT) @ SURVEY)
 PT STA. = 217+37.62
 (17+37.22, 17.69' (LT) @ SURVEY)
 e = NC

CURVE DATA SB_INSIDE_EOP2
 PI STA. = 220+74.03
 Δ = 3° 53' 18" (RT)
 D = 0° 44' 45"
 T = 260.82
 L = 521.44
 R = 7,683.50
 PC STA. = 218+13.21
 (18+12.64, 22.81' (LT) @ SURVEY)
 PT STA. = 223+34.65
 (23+33.68, 40.50' (LT) @ SURVEY)
 e = NC



CURVE BL_RMP_E2

CURVE SB_INSIDE_EOP1

CURVE SB_INSIDE_EOP2

CURVE NB_INSIDE_EOP1

CURVE BL_RMP_H2

CURVE DATA BL_RMP_H2
 PI STA. = 815+31.82
 Δ = 71° 47' 22" (RT)
 D = 7° 07' 03"
 T = 582.61
 L = 1,008.64
 R = 805.00
 PCC STA. = 809+49.21
 PT STA. = 819+57.85
 e = 0.090

CURVE DATA NB_INSIDE_EOP1
 PI STA. = 332+30.61
 Δ = 6° 02' 24" (LT)
 D = 0° 44' 45"
 T = 405.37
 L = 809.99
 R = 7,683.50
 PC STA. = 328+25.24
 (28+25.24, 44.50' (RT) @ SURVEY)
 PT STA. = 336+35.23
 (36+33.11, 29.27' (RT) @ SURVEY)
 e = NC

LEGEND:
 [Hatched Box] PROPOSED ROADWAY
 [Dashed Box] PROPOSED BRIDGE

| REVISIONS | | | |
|-----------|-------------|------|-------------|
| DATE | DESCRIPTION | DATE | DESCRIPTION |
| | | | |

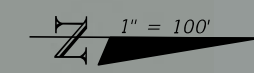
ALEJANDRO A. BARRIOS, P.E.
 P.E. LICENSE NO. 75972
 PARSONS TRANSPORTATION GROUP, INC.
 201 E. PINE STREET, SUITE 900
 ORLANDO, FL 32801
 PHONE: (407) 702-6800

| STATE OF FLORIDA DEPARTMENT OF TRANSPORTATION | | |
|--|---------|----------------------|
| ROAD NO. | COUNTY | FINANCIAL PROJECT ID |
| SR 401 | BREVARD | 444787-1-22-01 |

ROADWAY PLANS

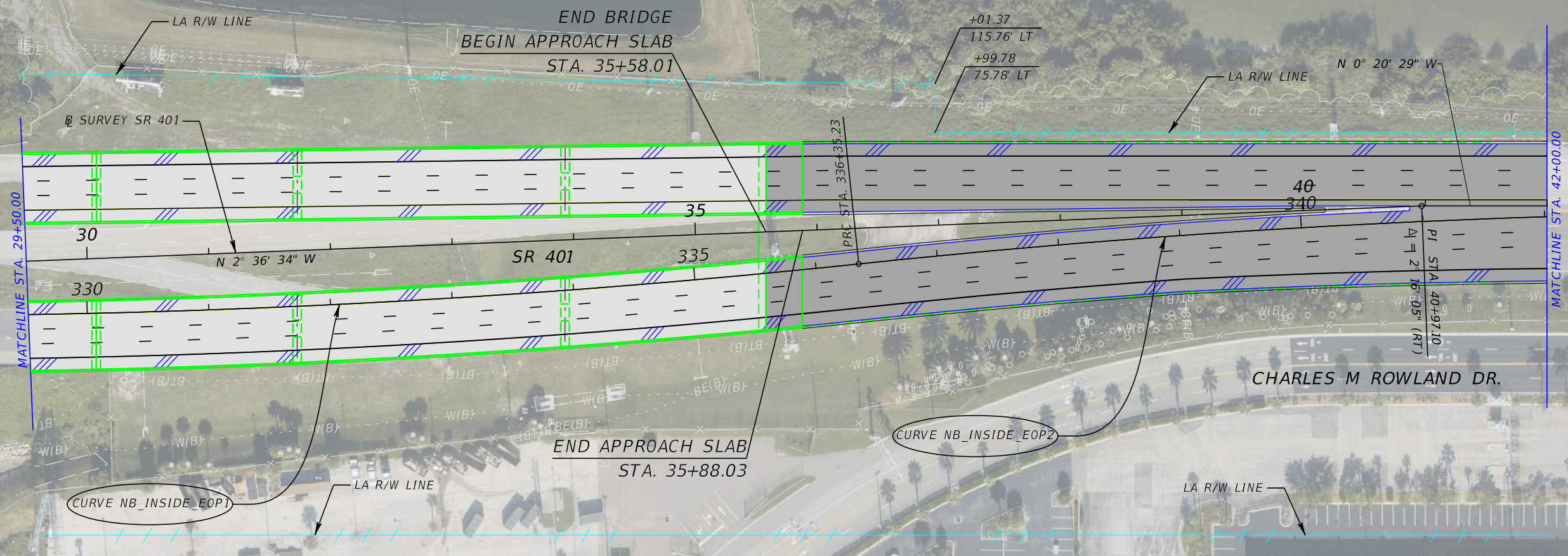
SHEET NO.
7

THE OFFICIAL RECORD OF THIS SHEET IS THE ELECTRONIC FILE DIGITALLY SIGNED AND SEALED UNDER RULE 61G15-23.004, F.A.C.



CURVE DATA NB_INSIDE_EOP1
 PI STA. = 332+30.61
 Δ = 6° 02' 24" (LT)
 D = 0° 44' 45"
 T = 405.37
 L = 809.99
 R = 7,683.50
 PC STA. = 328+25.24
 (28+25.24, 44.50' (RT) @ SURVEY)
 PT STA. = 336+35.23
 (36+33.11, 29.27' (RT) @ SURVEY)
 e = NC

CURVE DATA NB_INSIDE_EOP2
 PI STA. = 340+40.15
 Δ = 6° 02' 24" (RT)
 D = 0° 44' 47"
 T = 404.92
 L = 809.09
 R = 7,675.00
 PRC STA. = 336+35.23
 (36+33.11, 29.27' (RT) @ SURVEY)
 PT STA. = 344+44.32
 (44+42.23, 5.00' (RT) @ SURVEY)
 e = NC



LEGEND:
 [Grey Box] PROPOSED ROADWAY
 [White Box] PROPOSED BRIDGE

PRELIMINARY

| REVISIONS | | | |
|-----------|-------------|------|-------------|
| DATE | DESCRIPTION | DATE | DESCRIPTION |
| | | | |

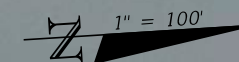
ALEJANDRO A. BARRIOS, P.E.
 P.E. LICENSE NO. 75972
 PARSONS TRANSPORTATION GROUP, INC.
 201 E. PINE STREET, SUITE 900
 ORLANDO, FL 32801
 PHONE: (407) 702-6800

| STATE OF FLORIDA DEPARTMENT OF TRANSPORTATION | | |
|--|---------|----------------------|
| ROAD NO. | COUNTY | FINANCIAL PROJECT ID |
| SR 401 | BREVARD | 444787-1-22-01 |

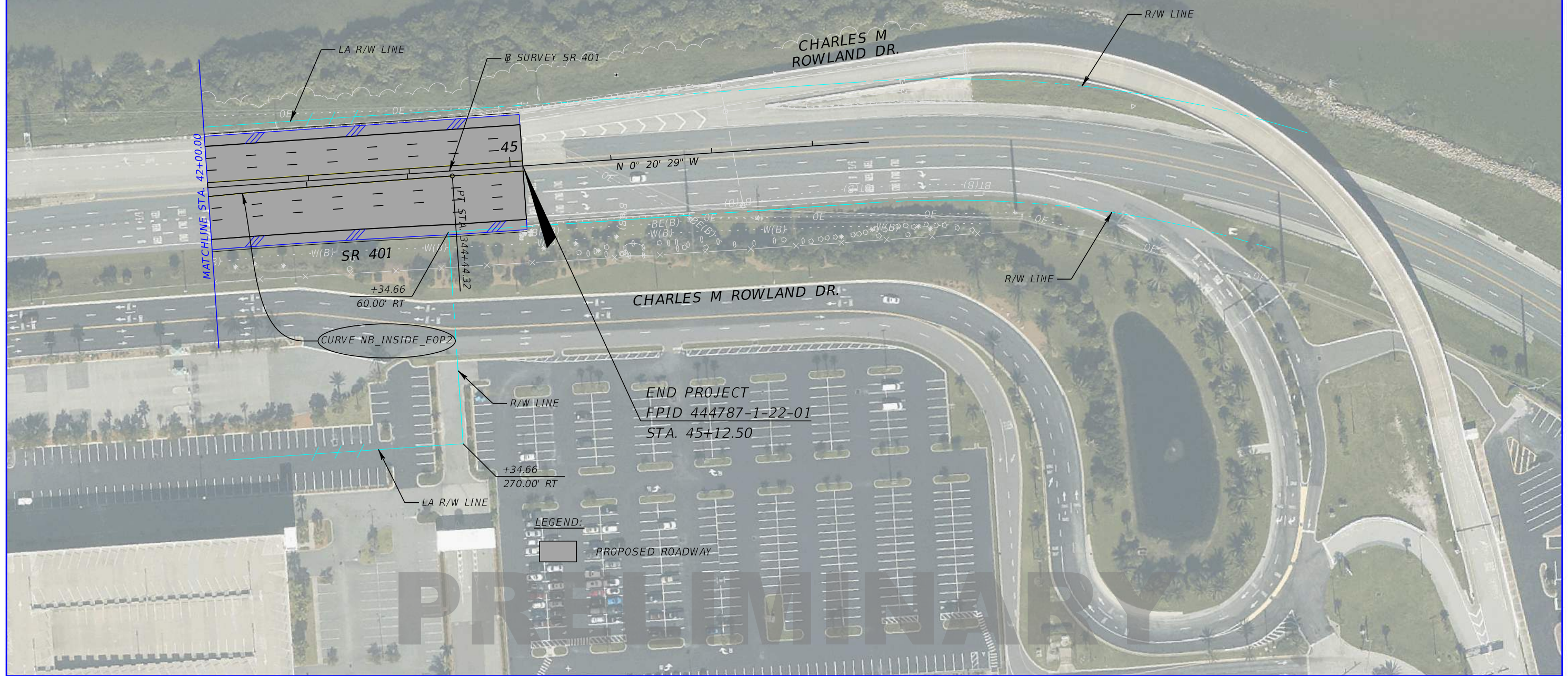
ROADWAY PLANS

SHEET NO.
8

THE OFFICIAL RECORD OF THIS SHEET IS THE ELECTRONIC FILE DIGITALLY SIGNED AND SEALED UNDER RULE 61G15-23.004, F.A.C.



CURVE DATA NB_INSIDE_EOP2
 PI STA. = 340+40.15
 Δ = 6° 02' 24" (RT)
 D = 0° 44' 47"
 T = 404.92
 L = 809.09
 R = 7,675.00
 PRC STA. = 336+35.23
 (36+33.11, 29.27' (RT) @ SURVEY)
 PT STA. = 344+44.32
 (44+42.23, 5.00' (RT) @ SURVEY)
 e = NC



LEGEND:
 PROPOSED ROADWAY

PRELIMINARY

| REVISIONS | | | |
|-----------|-------------|------|-------------|
| DATE | DESCRIPTION | DATE | DESCRIPTION |
| | | | |

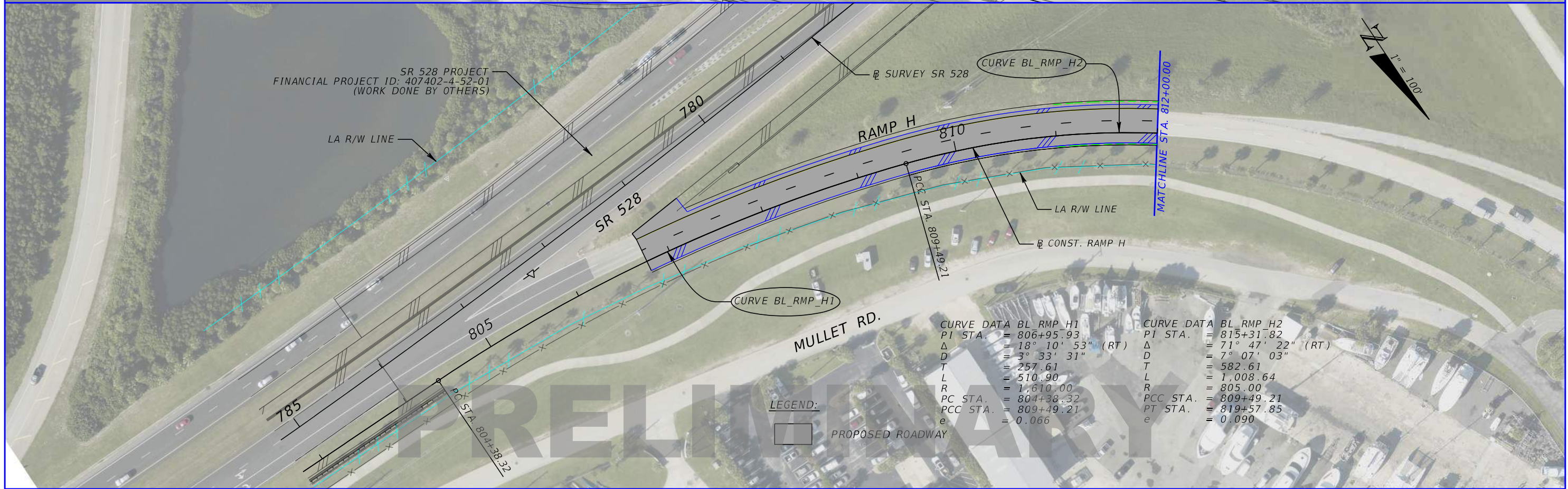
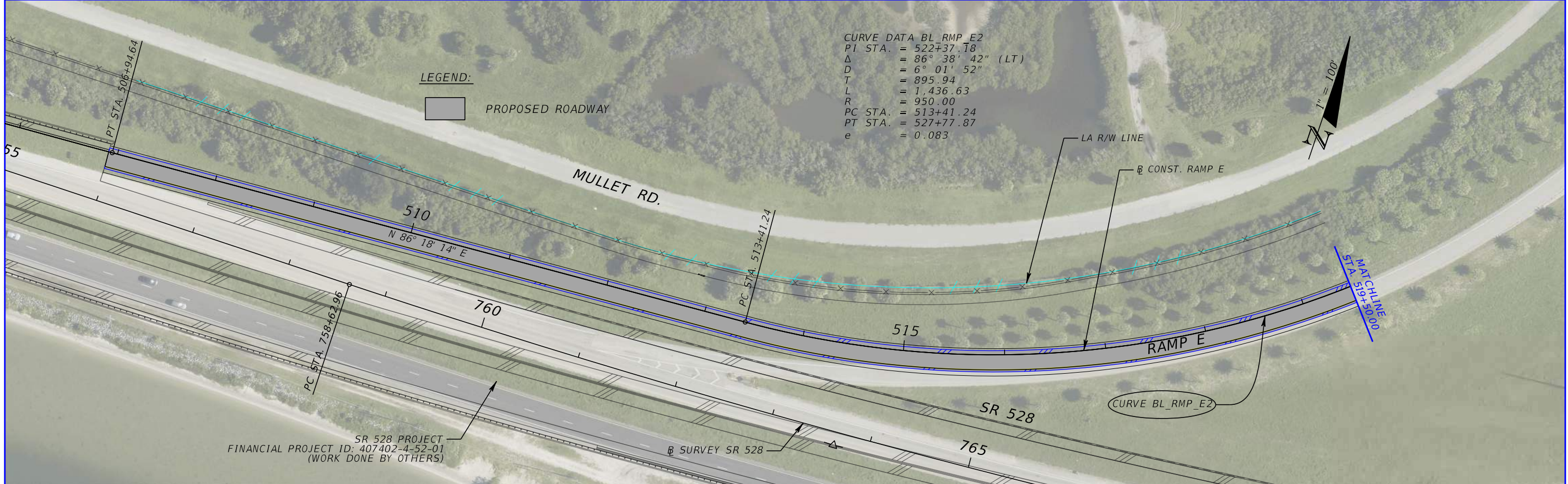
ALEJANDRO A. BARRIOS, P.E.
 P.E. LICENSE NO. 75972
 PARSONS TRANSPORTATION GROUP, INC.
 201 E. PINE STREET, SUITE 900
 ORLANDO, FL 32801
 PHONE: (407) 702-6800

| STATE OF FLORIDA DEPARTMENT OF TRANSPORTATION | | |
|--|---------|----------------------|
| ROAD NO. | COUNTY | FINANCIAL PROJECT ID |
| SR 401 | BREVARD | 444787-1-22-01 |

ROADWAY PLANS

SHEET NO.
9

THE OFFICIAL RECORD OF THIS SHEET IS THE ELECTRONIC FILE DIGITALLY SIGNED AND SEALED UNDER RULE 61G15-23.004, F.A.C.



| REVISIONS | | | |
|-----------|-------------|------|-------------|
| DATE | DESCRIPTION | DATE | DESCRIPTION |
| | | | |

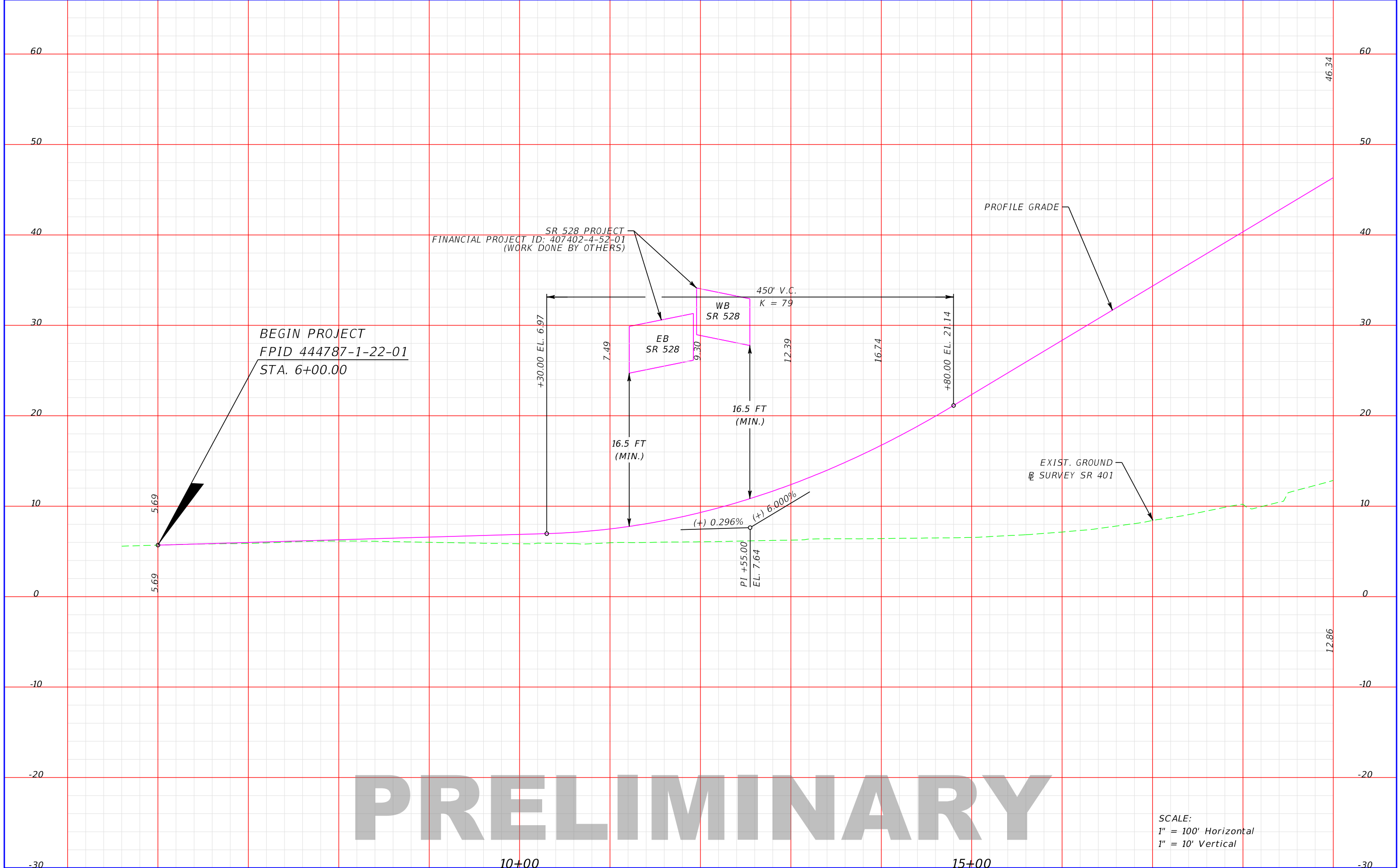
ALEJANDRO A. BARRIOS, P.E.
 P.E. LICENSE NO. 75972
 PARSONS TRANSPORTATION GROUP, INC.
 201 E. PINE STREET, SUITE 900
 ORLANDO, FL 32801
 PHONE: (407) 702-6800

| STATE OF FLORIDA DEPARTMENT OF TRANSPORTATION | | |
|--|---------|----------------------|
| ROAD NO. | COUNTY | FINANCIAL PROJECT ID |
| SR 401 | BREVARD | 444787-1-22-01 |

ROADWAY PLAN

SHEET NO.
10

THE OFFICIAL RECORD OF THIS SHEET IS THE ELECTRONIC FILE DIGITALLY SIGNED AND SEALED UNDER RULE 61G15-23.004, F.A.C.



PRELIMINARY

SCALE:
 1" = 100' Horizontal
 1" = 10' Vertical

| REVISIONS | | | |
|-----------|-------------|------|-------------|
| DATE | DESCRIPTION | DATE | DESCRIPTION |
| | | | |

ALEJANDRO A. BARRIOS, P.E.
 P.E. LICENSE NO. 75972
 PARSONS TRANSPORTATION GROUP, INC.
 201 E. PINE STREET, SUITE 900
 ORLANDO, FL 32801
 PHONE: (407) 702-6800

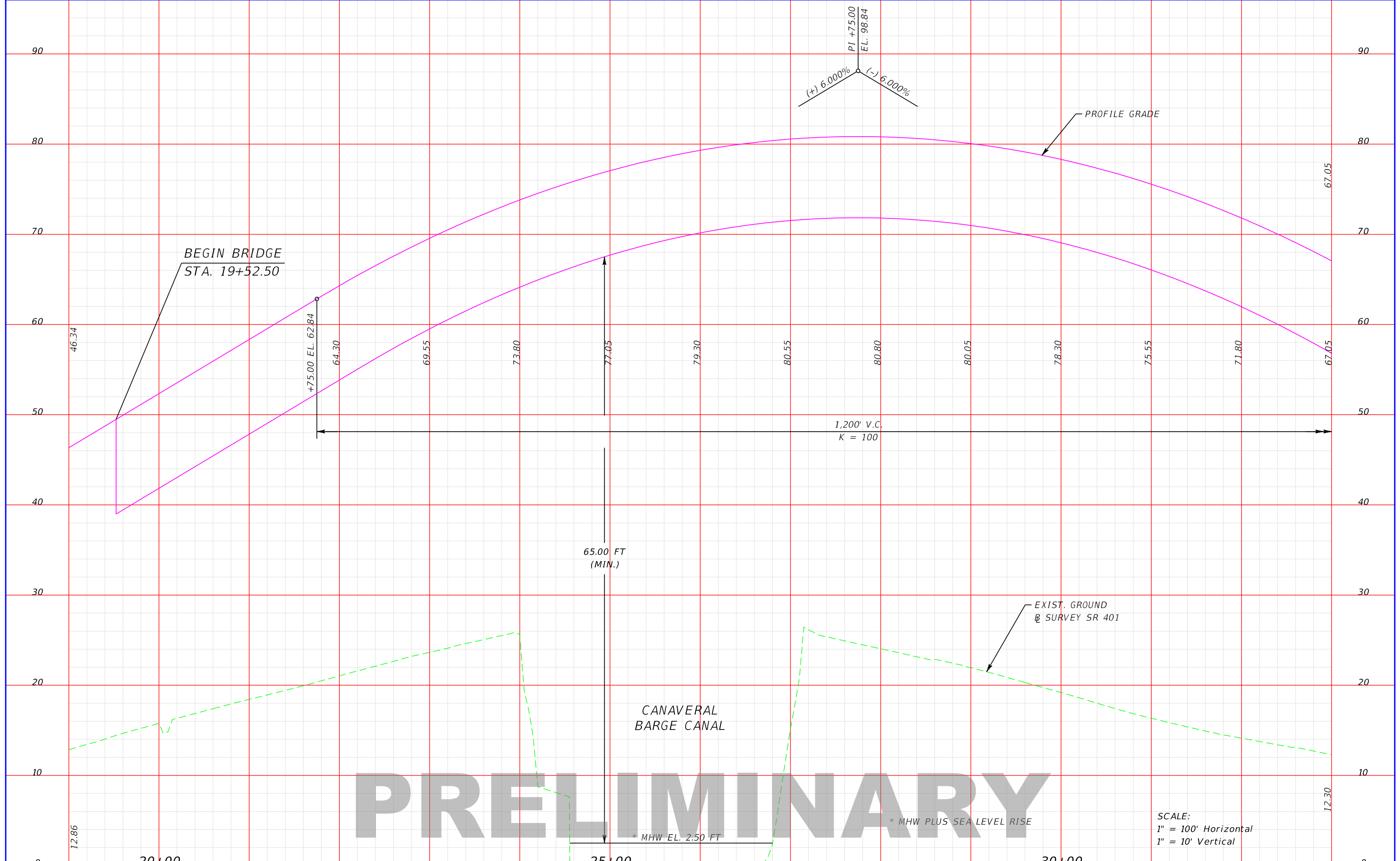
| STATE OF FLORIDA DEPARTMENT OF TRANSPORTATION | | |
|--|---------|----------------------|
| ROAD NO. | COUNTY | FINANCIAL PROJECT ID |
| SR 401 | BREVARD | 444787-1-22-01 |

ROADWAY PROFILE

SHEET
NO.

11

THE OFFICIAL RECORD OF THIS SHEET IS THE ELECTRONIC FILE DIGITALLY SIGNED AND SEALED UNDER RULE 61G15-23.004, F.A.C.



PRELIMINARY

* MHW PLUS SEA LEVEL RISE

SCALE:
 1" = 100' Horizontal
 1" = 10' Vertical

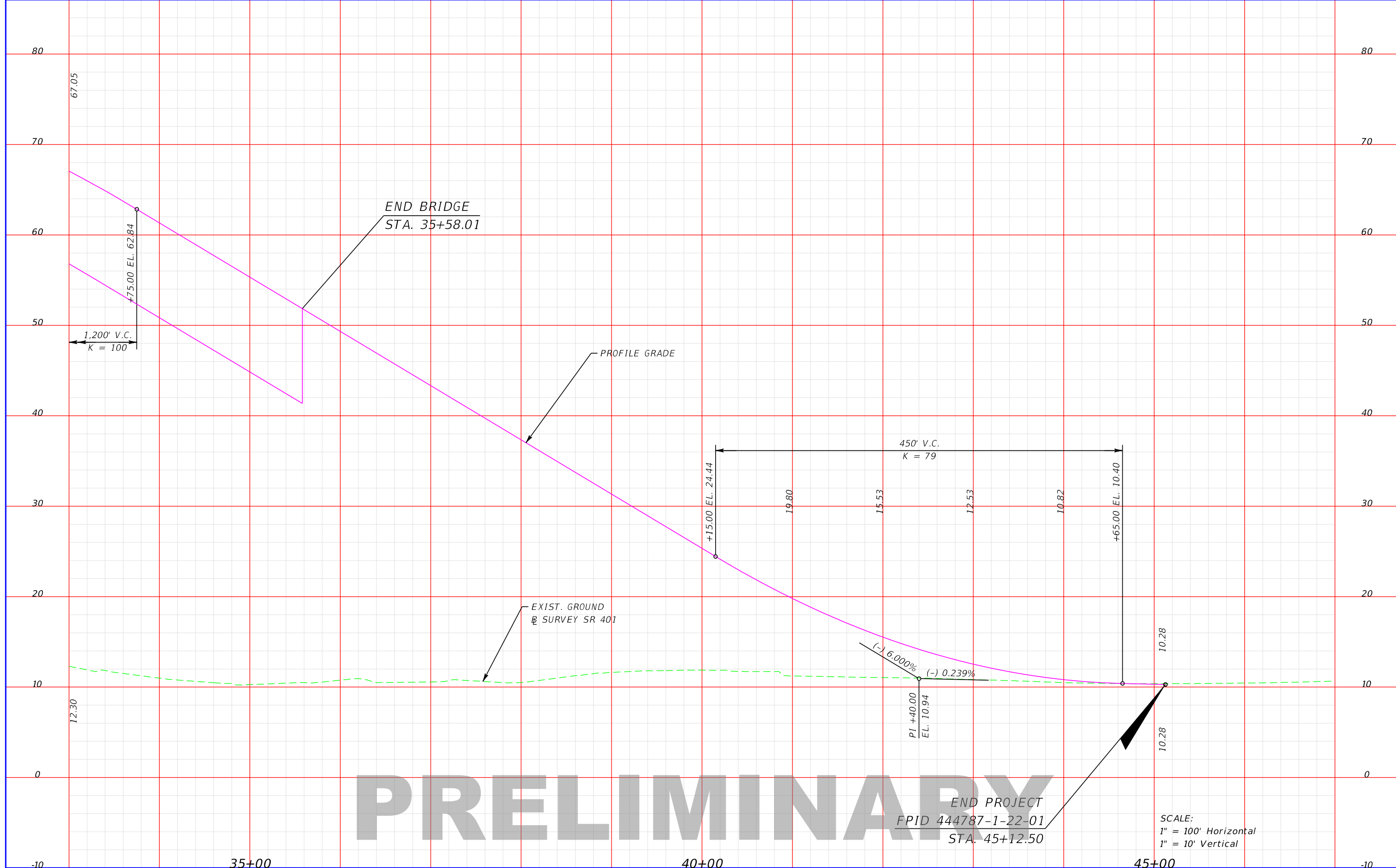
| REVISIONS | | | |
|-----------|-------------|------|-------------|
| DATE | DESCRIPTION | DATE | DESCRIPTION |
| | | | |

ALEJANDRO A. BARRIOS, P.E.
 P.E. LICENSE NO. 75972
 PARSONS TRANSPORTATION GROUP, INC.
 201 E. PINE STREET, SUITE 900
 ORLANDO, FL 32801
 PHONE: (407) 702-6800

| STATE OF FLORIDA DEPARTMENT OF TRANSPORTATION | | |
|--|---------|----------------------|
| ROAD NO. | COUNTY | FINANCIAL PROJECT ID |
| SR 401 | BREVARD | 444787-1-22-01 |

| | |
|-----------------|-----------------|
| ROADWAY PROFILE | SHEET NO. 12 |
|-----------------|-----------------|

THE OFFICIAL RECORD OF THIS SHEET IS THE ELECTRONIC FILE DIGITALLY SIGNED AND SEALED UNDER RULE 61G15-23.004, F.A.C.



PRELIMINARY

END PROJECT
FPID 444787-1-22-01
STA. 45+12.50

SCALE:
1" = 100' Horizontal
1" = 10' Vertical

| REVISIONS | | | |
|-----------|-------------|------|-------------|
| DATE | DESCRIPTION | DATE | DESCRIPTION |
| | | | |

ALEJANDRO A. BARRIOS, P.E.
P.E. LICENSE NO. 75972
PARSONS TRANSPORTATION GROUP, INC.
201 E. PINE STREET, SUITE 900
ORLANDO, FL 32801
PHONE: (407) 702-6800

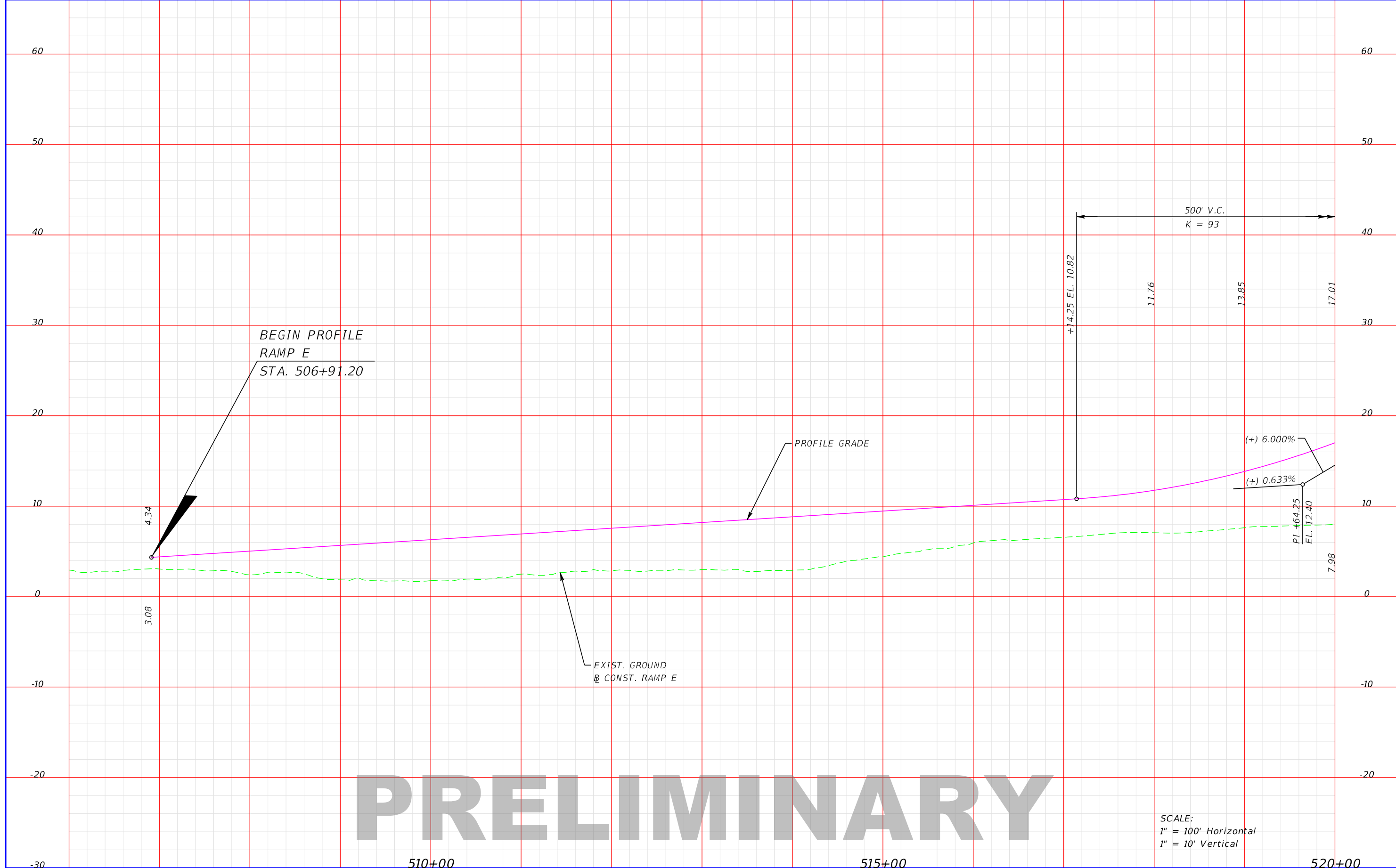
| | | |
|--|---------|----------------------|
| STATE OF FLORIDA DEPARTMENT OF TRANSPORTATION | | |
| ROAD NO. | COUNTY | FINANCIAL PROJECT ID |
| SR 401 | BREVARD | 444787-1-22-01 |

ROADWAY PROFILE

SHEET
NO.

13

THE OFFICIAL RECORD OF THIS SHEET IS THE ELECTRONIC FILE DIGITALLY SIGNED AND SEALED UNDER RULE 61G15-23.004, F.A.C.



PRELIMINARY

SCALE:
1" = 100' Horizontal
1" = 10' Vertical

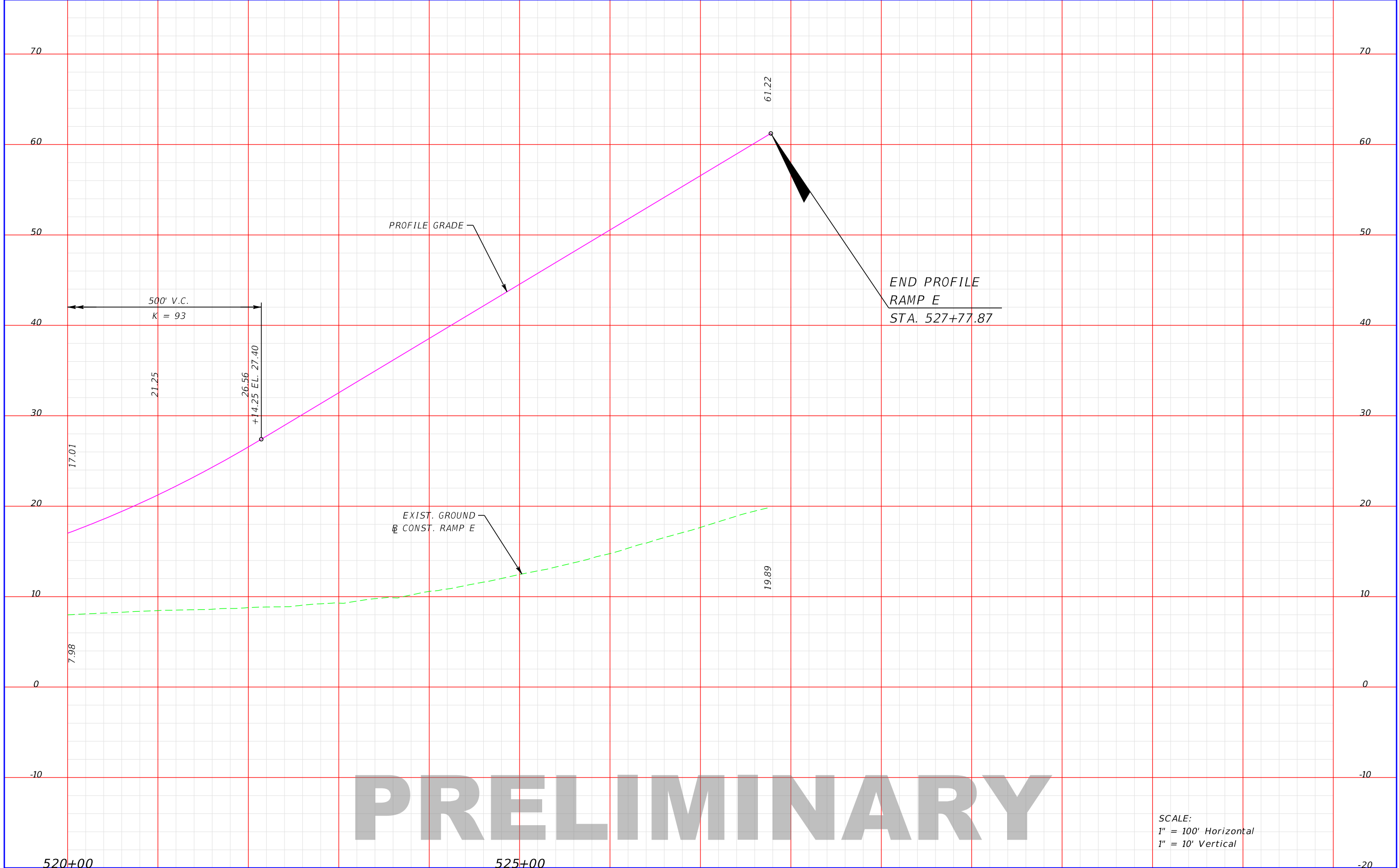
| REVISIONS | | | |
|-----------|-------------|------|-------------|
| DATE | DESCRIPTION | DATE | DESCRIPTION |
| | | | |

ALEJANDRO A. BARRIOS, P.E.
P.E. LICENSE NO. 75972
PARSONS TRANSPORTATION GROUP, INC.
201 E. PINE STREET, SUITE 900
ORLANDO, FL 32801
PHONE: (407) 702-6800

| | | |
|--|---------|----------------------|
| STATE OF FLORIDA DEPARTMENT OF TRANSPORTATION | | |
| ROAD NO. | COUNTY | FINANCIAL PROJECT ID |
| SR 401 | BREVARD | 444787-1-22-01 |

| | |
|---|--|
| ROADWAY PROFILE RAMP E | |
| SHEET NO. 14 | |

THE OFFICIAL RECORD OF THIS SHEET IS THE ELECTRONIC FILE DIGITALLY SIGNED AND SEALED UNDER RULE 61G15-23.004, F.A.C.



PRELIMINARY

SCALE:
 1" = 100' Horizontal
 1" = 10' Vertical

| REVISIONS | | | |
|-----------|-------------|------|-------------|
| DATE | DESCRIPTION | DATE | DESCRIPTION |
| | | | |

ALEJANDRO A. BARRIOS, P.E.
 P.E. LICENSE NO. 75972
 PARSONS TRANSPORTATION GROUP, INC.
 201 E. PINE STREET, SUITE 900
 ORLANDO, FL 32801
 PHONE: (407) 702-6800

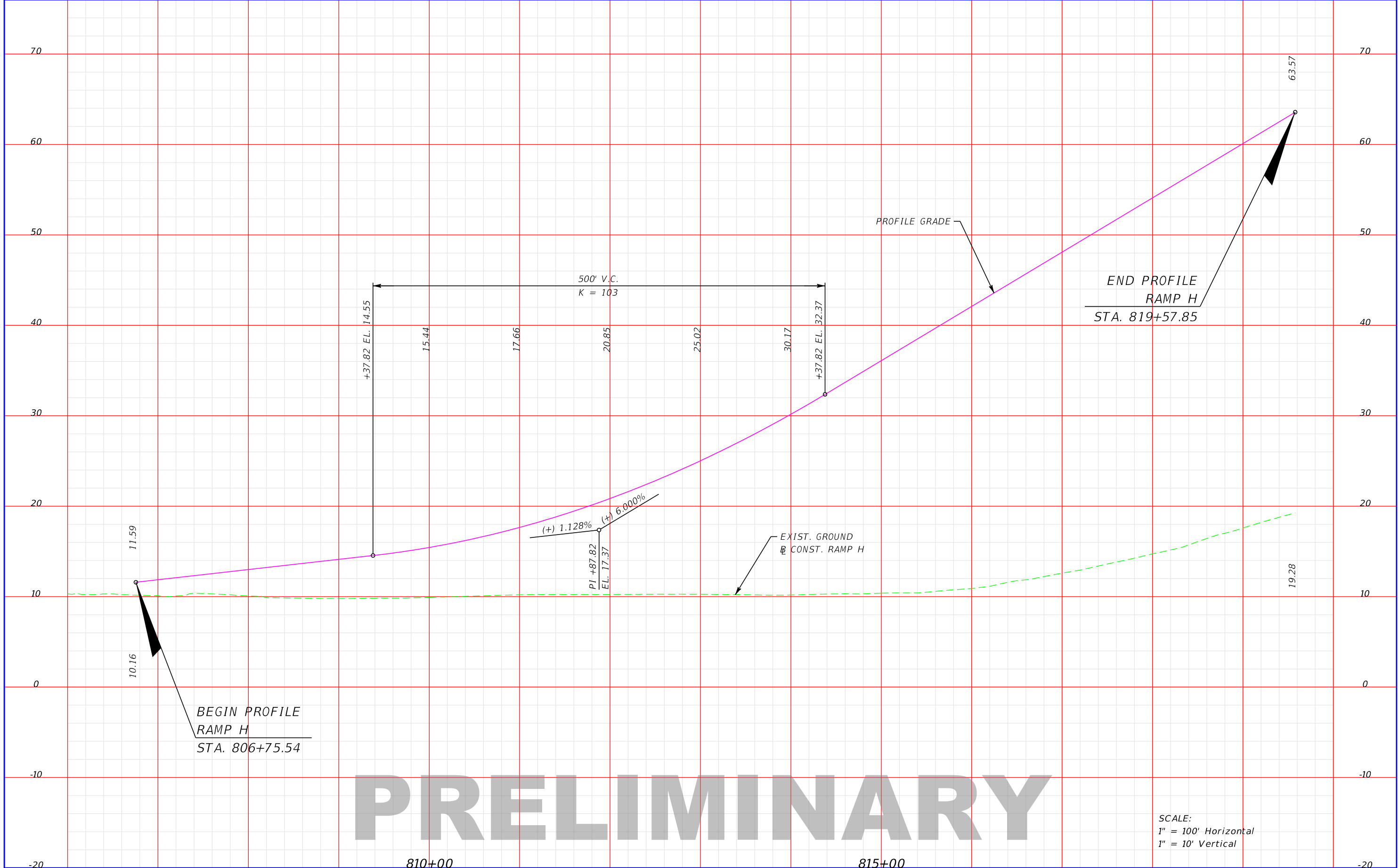
| STATE OF FLORIDA DEPARTMENT OF TRANSPORTATION | | |
|--|---------|----------------------|
| ROAD NO. | COUNTY | FINANCIAL PROJECT ID |
| SR 401 | BREVARD | 444787-1-22-01 |

ROADWAY PROFILE
RAMP E

SHEET
NO.

15

THE OFFICIAL RECORD OF THIS SHEET IS THE ELECTRONIC FILE DIGITALLY SIGNED AND SEALED UNDER RULE 61G15-23.004, F.A.C.



PRELIMINARY

SCALE:
 1" = 100' Horizontal
 1" = 10' Vertical

| REVISIONS | | | |
|-----------|-------------|------|-------------|
| DATE | DESCRIPTION | DATE | DESCRIPTION |
| | | | |

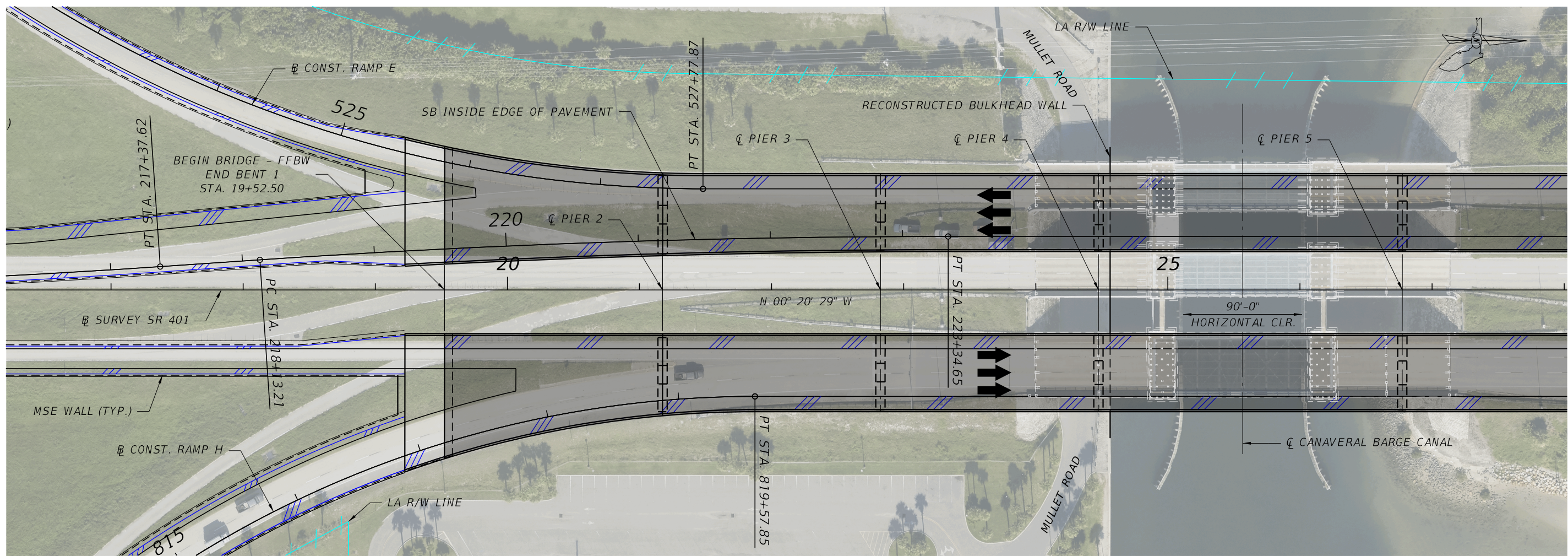
ALEJANDRO A. BARRIOS, P.E.
 P.E. LICENSE NO. 75972
 PARSONS TRANSPORTATION GROUP, INC.
 201 E. PINE STREET, SUITE 900
 ORLANDO, FL 32801
 PHONE: (407) 702-6800

| STATE OF FLORIDA DEPARTMENT OF TRANSPORTATION | | |
|--|---------|----------------------|
| ROAD NO. | COUNTY | FINANCIAL PROJECT ID |
| SR 401 | BREVARD | 444787-1-22-01 |

ROADWAY PROFILE
RAMP H

SHEET NO.
16

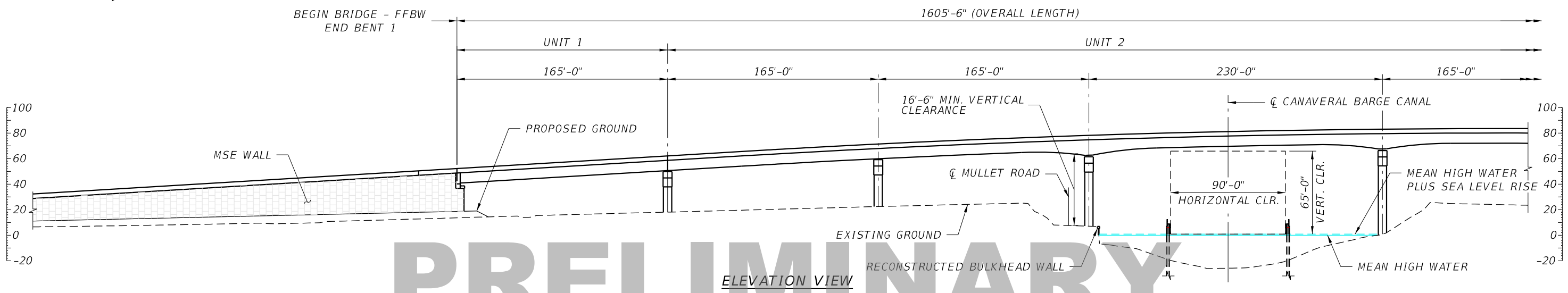
THE OFFICIAL RECORD OF THIS SHEET IS THE ELECTRONIC FILE DIGITALLY SIGNED AND SEALED UNDER RULE 61G15-23.004, F.A.C.



PLAN VIEW

LEGEND

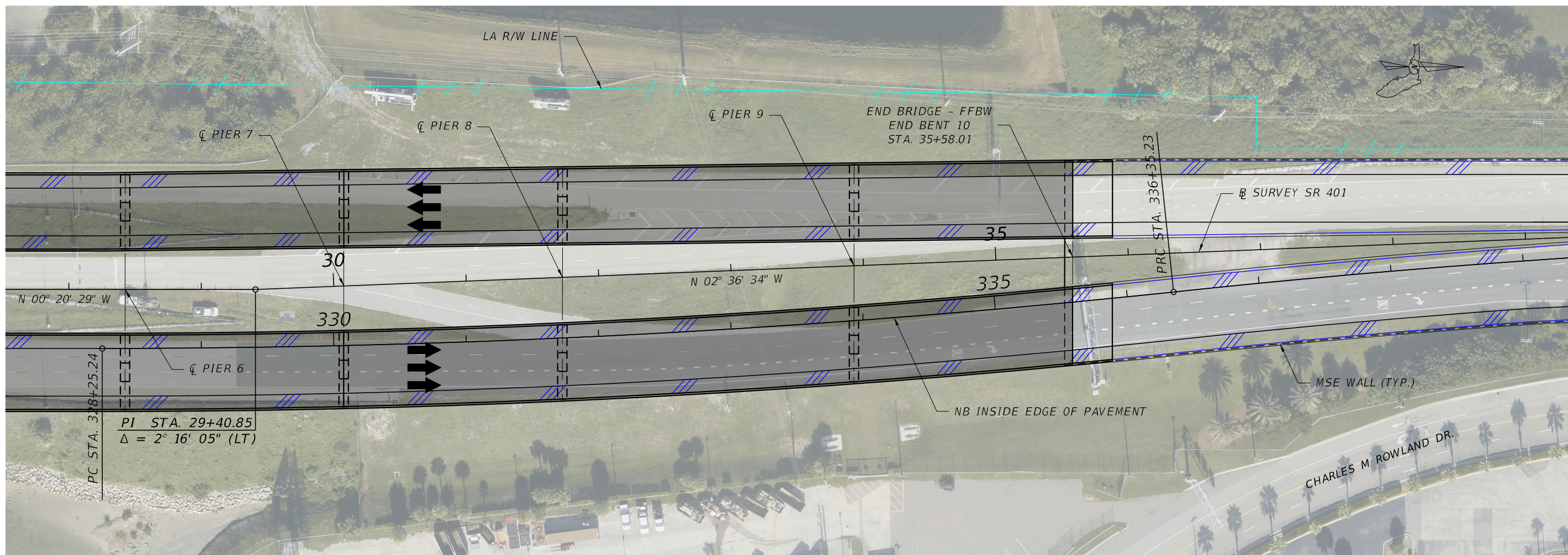
➔ DIRECTION OF TRAVEL



ELEVATION VIEW

PRELIMINARY

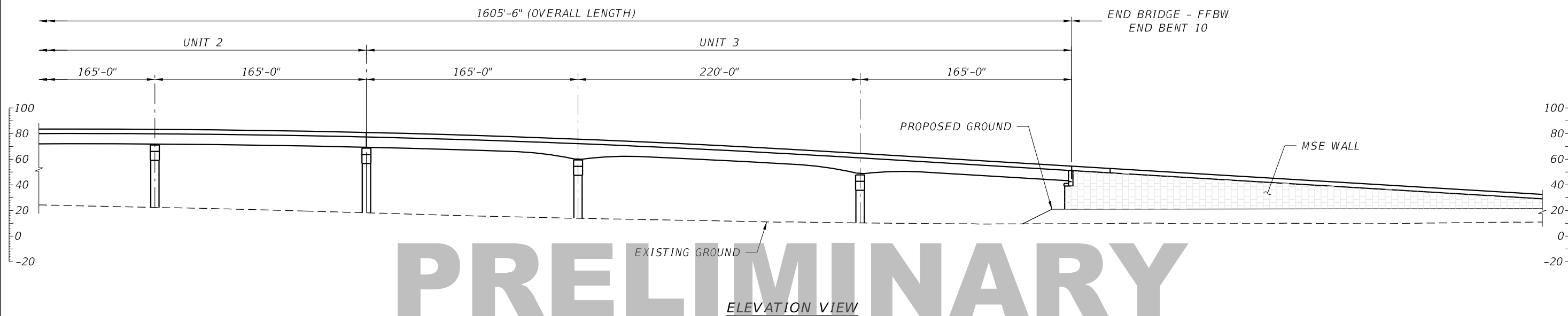
| REVISIONS | | | | | | SHANNON D. MARPLE, P.E. P.E. LICENSE NO. 74772 PARSONS TRANSPORTATION GROUP, INC. 201 E. PINE STREET, SUITE 900 ORLANDO, FL 32801 PHONE: (407) 702-6800 | Drawn By: XXX MM-YY Checked by: XXX MM-YY Designed by: XXX MM-YY Checked by: XXX MM-YY | STATE OF FLORIDA DEPARTMENT OF TRANSPORTATION | | | SHEET TITLE: | REF. DWG. NO. |
|-----------|----|-------------|------|----|-------------|--|---|--|--|----------------------|---------------|---------------|
| Date | By | Description | Date | By | Description | | | ROAD NO. | COUNTY | FINANCIAL PROJECT ID | PROJECT NAME: | SHEET NO. |
| | | | | | | SR 401 | BREVARD | 444787-1-22-01 | SR 401 OVER CANAVERAL BARGE CANAL AND MULET ROAD | 17 | | |



PLAN VIEW

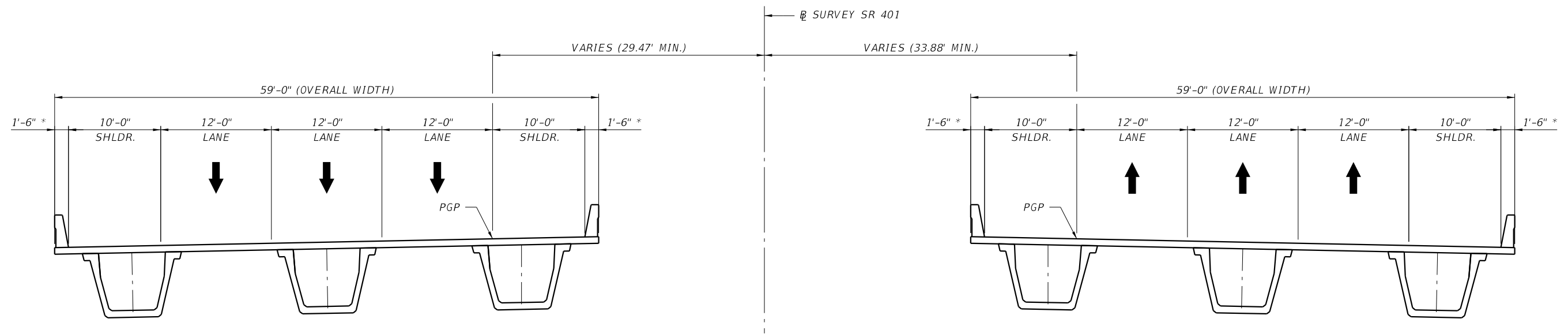
LEGEND

➔ DIRECTION OF TRAVEL



PRELIMINARY

| REVISIONS | | | | | | SHANNON D. MARPLE, P.E. P.E. LICENSE NO. 74772 PARSONS TRANSPORTATION GROUP, INC. 201 E. PINE STREET, SUITE 900 ORLANDO, FL 32801 PHONE: (407) 702-6800 | Drawn By: XXX MM-YY Checked by: XXX MM-YY Designed by: XXX MM-YY Checked by: XXX MM-YY | STATE OF FLORIDA DEPARTMENT OF TRANSPORTATION | | | SHEET TITLE: BRIDGE PLAN AND ELEVATION (2 OF 2) | REF. DWG. NO. |
|-----------|----|-------------|------|----|-------------|--|---|--|----------------|--|--|---------------|
| Date | By | Description | Date | By | Description | | | ROAD NO. | COUNTY | FINANCIAL PROJECT ID | | |
| | | | | | | | SR 401 | BREVARD | 444787-1-22-01 | PROJECT NAME: SR 401 OVER CANAVERAL BARGE CANAL AND MULLET ROAD | SHEET NO. 18 | |



LEGEND

- * TRAFFIC RAILING (42" SINGLE SLOPE) (INDEX 521-428)
- ➔ DIRECTION OF TRAVEL

BRIDGE TYPICAL SECTION

PRELIMINARY

| REVISIONS | | | | | | SHANNON D. MARPLE, P.E. P.E. LICENSE NO. 74772 PARSONS TRANSPORTATION GROUP, INC. 201 E. PINE STREET, SUITE 900 ORLANDO, FL 32801 PHONE: (407) 702-6800 | Drawn By: XXX MM-YY Checked by: XXX MM-YY Designed by: XXX MM-YY Checked by: XXX MM-YY | STATE OF FLORIDA DEPARTMENT OF TRANSPORTATION | | | SHEET TITLE: | REF. DWG. NO. |
|-----------|----|-------------|------|----|-------------|--|---|--|---|----------------------|---------------|---------------|
| Date | By | Description | Date | By | Description | | | ROAD NO. | COUNTY | FINANCIAL PROJECT ID | PROJECT NAME: | SHEET NO. |
| | | | | | | SR 401 | BREVARD | 444787-1-22-01 | SR 401 OVER CANAVERAL BARGE CANAL AND MULLET ROAD | 19 | | |



| REVISIONS | | | | | | SHANNON D. MARPLE, P.E. P.E. LICENSE NO. 74772 PARSONS TRANSPORTATION GROUP, INC. 201 E. PINE STREET, SUITE 900 ORLANDO, FL 32801 PHONE: (407) 702-6800 | Drawn By: XXX MM-YY Checked by: XXX MM-YY Designed by: XXX MM-YY Checked by: XXX MM-YY | STATE OF FLORIDA DEPARTMENT OF TRANSPORTATION | | | SHEET TITLE: | REF. DWG. NO. |
|-----------|----|-------------|------|----|-------------|--|---|--|---|----------------------|---------------|---------------|
| Date | By | Description | Date | By | Description | | | ROAD NO. | COUNTY | FINANCIAL PROJECT ID | PROJECT NAME: | SHEET NO. |
| | | | | | | SR 401 | BREVARD | 444787-1-22-01 | SR 401 OVER CANAVERAL BARGE CANAL AND MULLET ROAD | 20 | | |