



Welcome

to the

Florida Department of Transportation (FDOT)

S.R. 405 Corridor Study

Community Open House

July 30, 2025



Florida Department of Transportation Title VI Compliance

The meeting, project, or study is being conducted without regard to race, color, national origin, age, sex, religion, disability, or family status.

For questions or concerns, you may contact either:

Melissa McKinney

Florida Department of Transportation

District Five Title VI Coordinator

719 South Woodland Boulevard, MS 501

DeLand, Florida 32720

386-943-5077

Melissa.McKinney@dot.state.fl.us

Stefan Kulakowski

Florida Department of Transportation

State Title VI Coordinator

605 Suwannee Street, MS 65

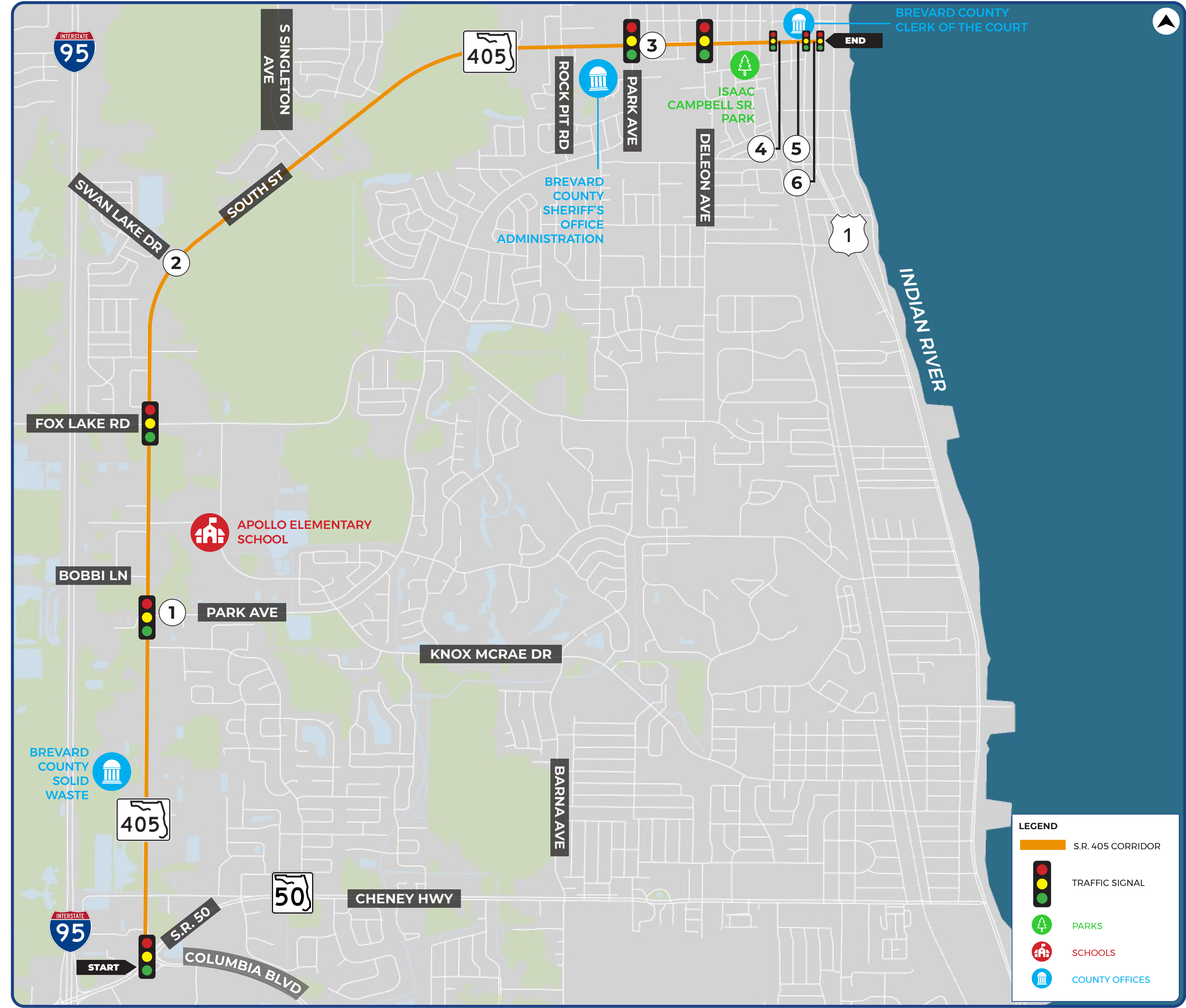
Tallahassee, Florida 32399

850-414-4742

Stefan.Kulakowski@dot.state.fl.us

All inquiries will be handled according to FDOT procedure and in a prompt and courteous manner.





S.R. 405 LOOKING NORTH AT PARK AVE



S.R. 405 LOOKING SOUTH FROM SWAN LAKE DR



S.R. 405 LOOKING WEST FROM PARK AVE



S.R. 405 AT RAILROAD CROSSING



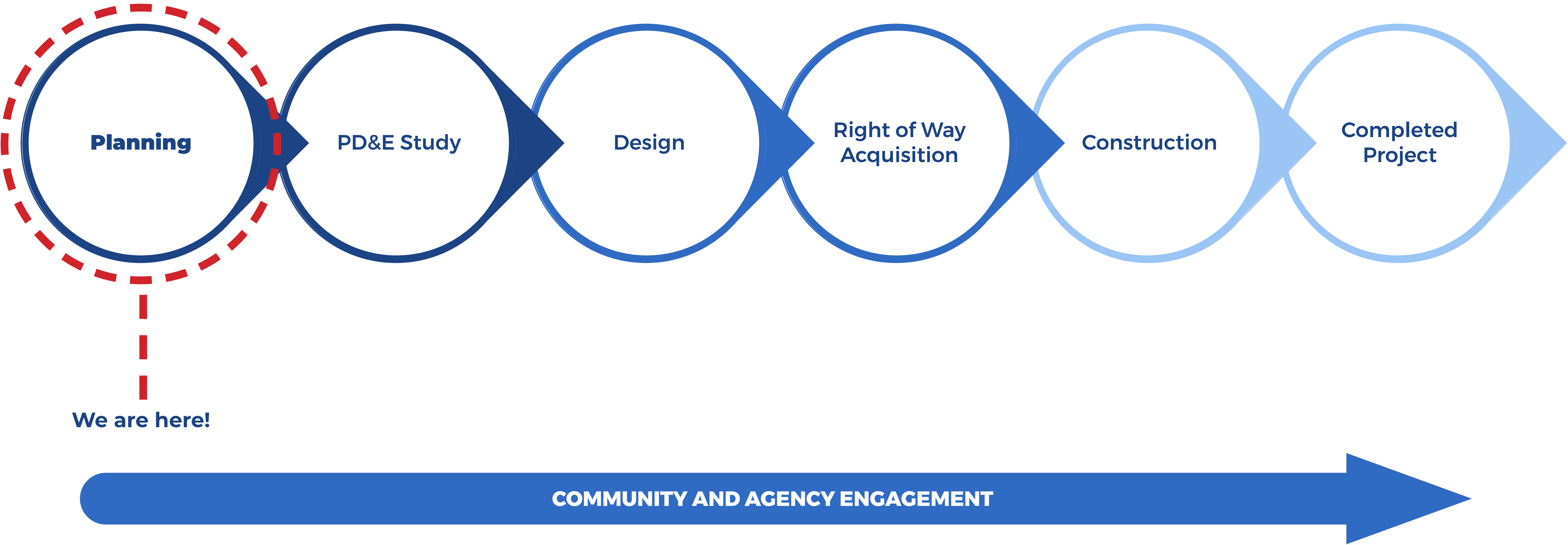
BUS STOP AT COUNTY BUILDING



S.R. 405 AT S HOPKINS



PROJECT DEVELOPMENT PROCESS



**The S.R. 405 Corridor Planning Study is anticipated to be completed in fall 2025. Future phases are not funded at this time.*



ALTERNATIVE 1: NEAR-TERM IMPROVEMENT

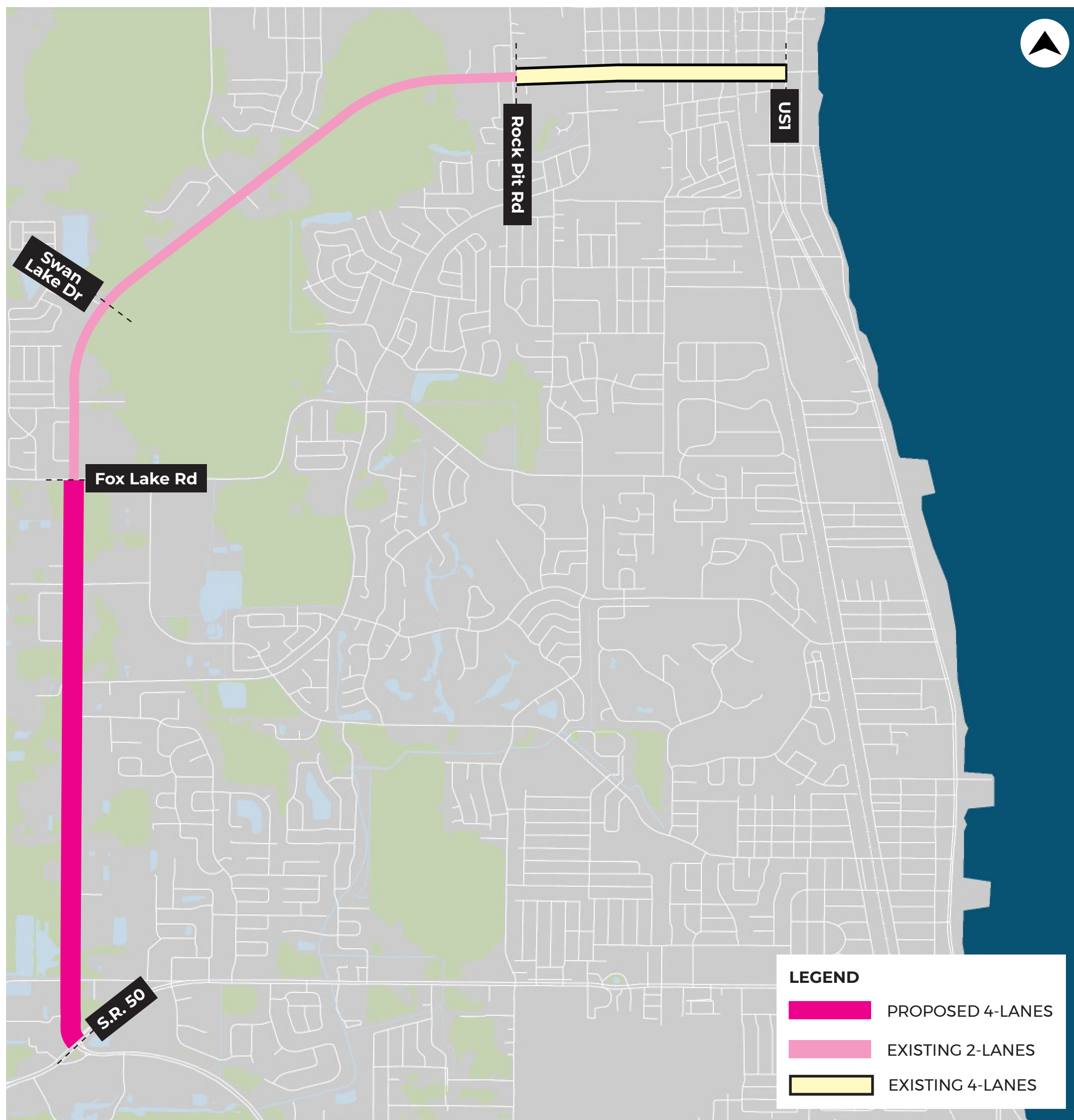
SAFETY AND OPERATIONAL IMPROVEMENTS

SPEED LIMIT PAVEMENT MARKING	TIGHTEN CURB RETURN	RECTANGULAR RAPID FLASHING BEACON (RRFB)	ADD / UPGRADE LIGHTING
RIGHT TURN LANE	UPDATE DYNAMIC MESSAGE SIGN	INTERNALLY ILLUMINATED RAISED PAVEMENT MARKERS	INTERSECTION CONTROL EVALUATION
LEFT TURN LANE	BUS STOP IMPROVEMENTS	HIGH VISIBILITY CROSSWALK	DYNAMIC CURVE WARNING SIGNS
ADVANCE SIGNAGE FOR INTERSECTING STREETS	SCHOOL-AREA IMPROVEMENTS	ADD PROTECTED LEFT TURNS, YELLOW SIGNAL TIMINGS, AND SIGNAL BACKPLATES	SPEED RADAR SIGNS

These icons represent the types of safety and operational improvements that are proposed in the near-term. For specific locations of these improvements, please see the roll plots.

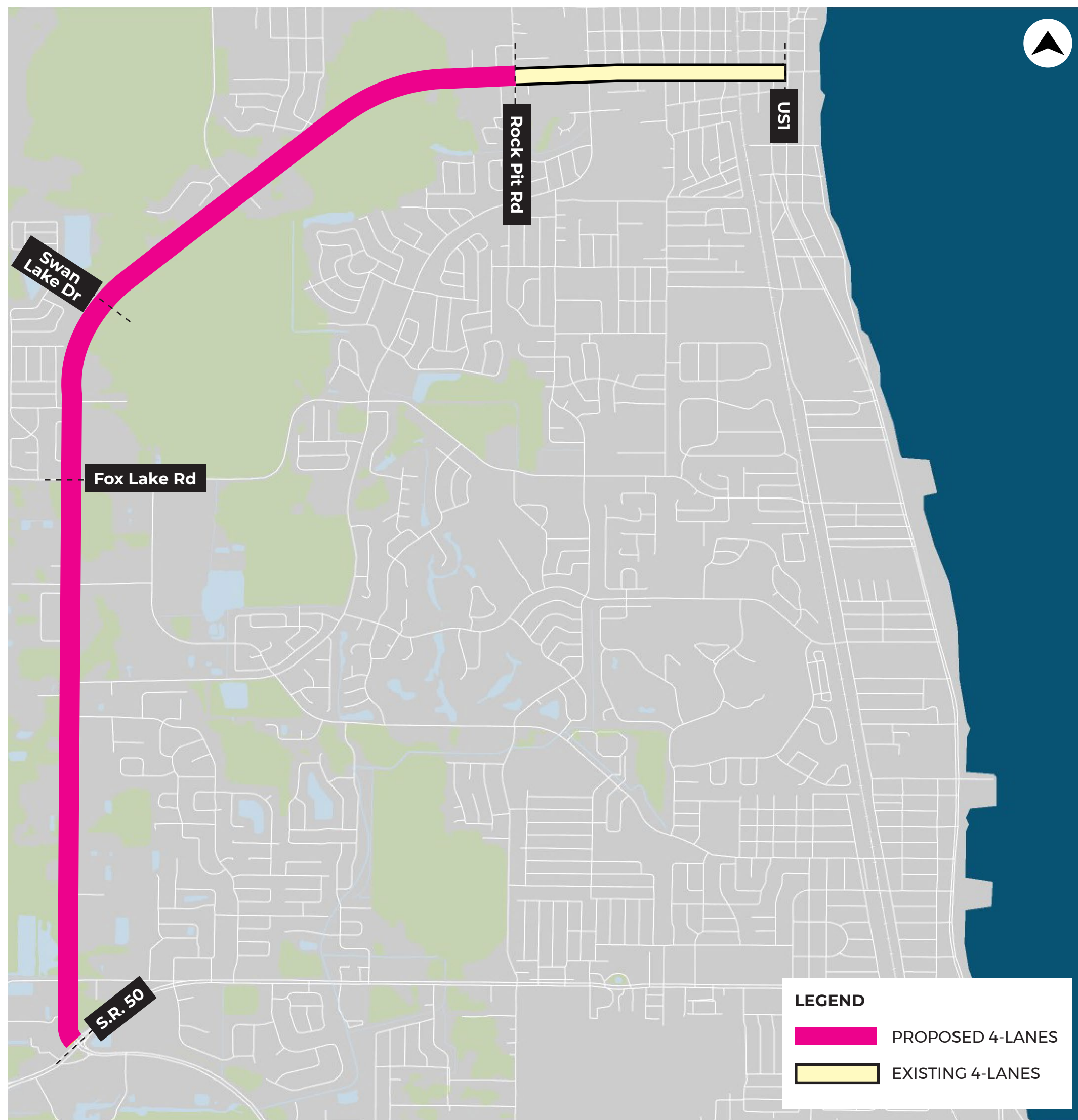
ALTERNATIVES 2 & 3: LONG-TERM IMPROVEMENT

SEGMENTED WIDENING: 2-4 LANE WIDENING FROM S.R. 50 TO FOX LAKE RD



The “Segmented Widening” proposes to widen S.R. 405 from 2 to 4 lanes from north of S.R. 50 to Fox Lake Road. The widening will include a center grass median and a 10’ shared use path for pedestrians and bicyclists on both sides of the road.

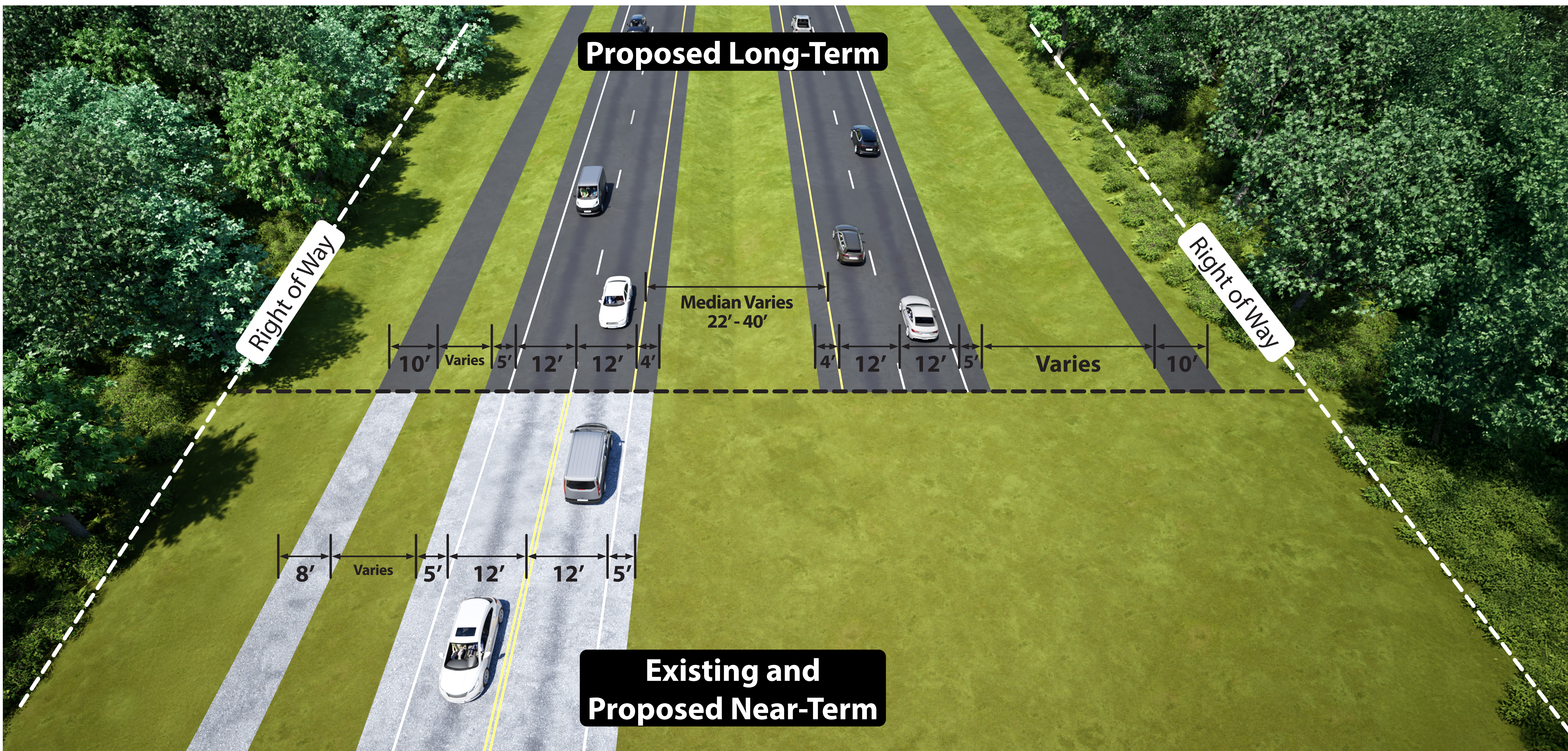
FULL WIDENING: 2-4 LANE WIDENING FROM S.R. 50 TO ROCK PIT RD



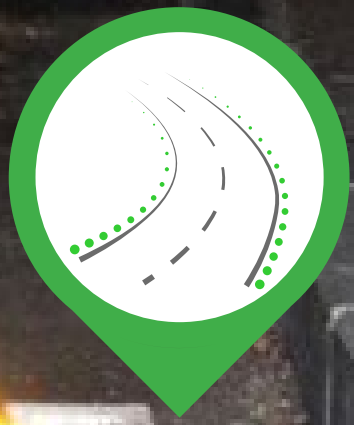
The “Full Widening” proposes to widen S.R. 405 from 2 to 4 lanes from north of S.R. 50 to Rock Pit Road, where it meets the existing 4-lane segment of S.R. 405. The widening will include a center grass median and a 10’ shared use path for pedestrians and bicyclists on both sides of the road.

** Safety and operational improvements will also be included in the widening options.*





INTERNALLY ILLUMINATED RAISED PAVEMENT MARKERS



Improves Visibility at Night

SIGNAL BACKPLATES



Increases Visibility of Signals

SPEED RADAR SIGN



Enhances Awareness of Speed Limits

DYNAMIC CURVE WARNING SIGNS



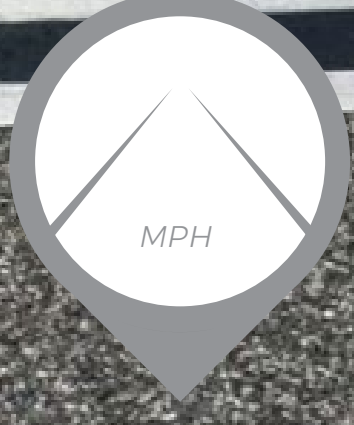
Increases Awareness of Curves

BUS STOP IMPROVEMENTS



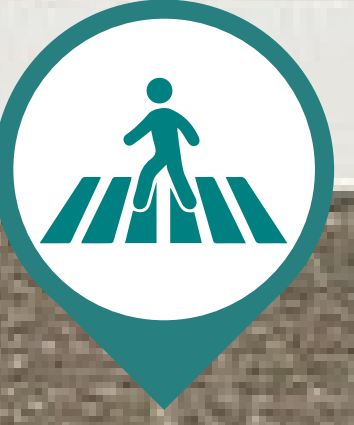
Improves Bus Stop Waiting Areas

SPEED LIMIT PAVEMENT MARKINGS



Enhances Awareness of Speed Limits

HIGH VISIBILITY CROSSWALK



Increases Awareness of Pedestrians / Bicyclists

TIGHTEN CURB RETURN



Slows Turning Speeds



RIGHT/LEFT TURN LANES



Provides dedicated turning facilities

ADVANCE SIGNAGE FOR INTERSECTING STREETS



Allows Vehicles to Reduce Speeds in Advance of Turns

UPDATE DYNAMIC MESSAGE SIGN



Provides Opportunity to Share Traffic Messages

SCHOOL AREA IMPROVEMENTS



Brings Awareness to Children and Parents Traveling to School

UPGRADE/ADD LIGHTING



Improves Lighting in Dark Conditions

RECTANGULAR RAPID FLASHING BEACON (RRFB)



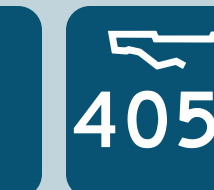
Provides Dedicated Crossing for Pedestrians and Bicyclists

INTERSECTION CONTROL EVALUATION



Conduct Study to Determine Intersection Needs





Thank you for attending tonight's Community Open House!

