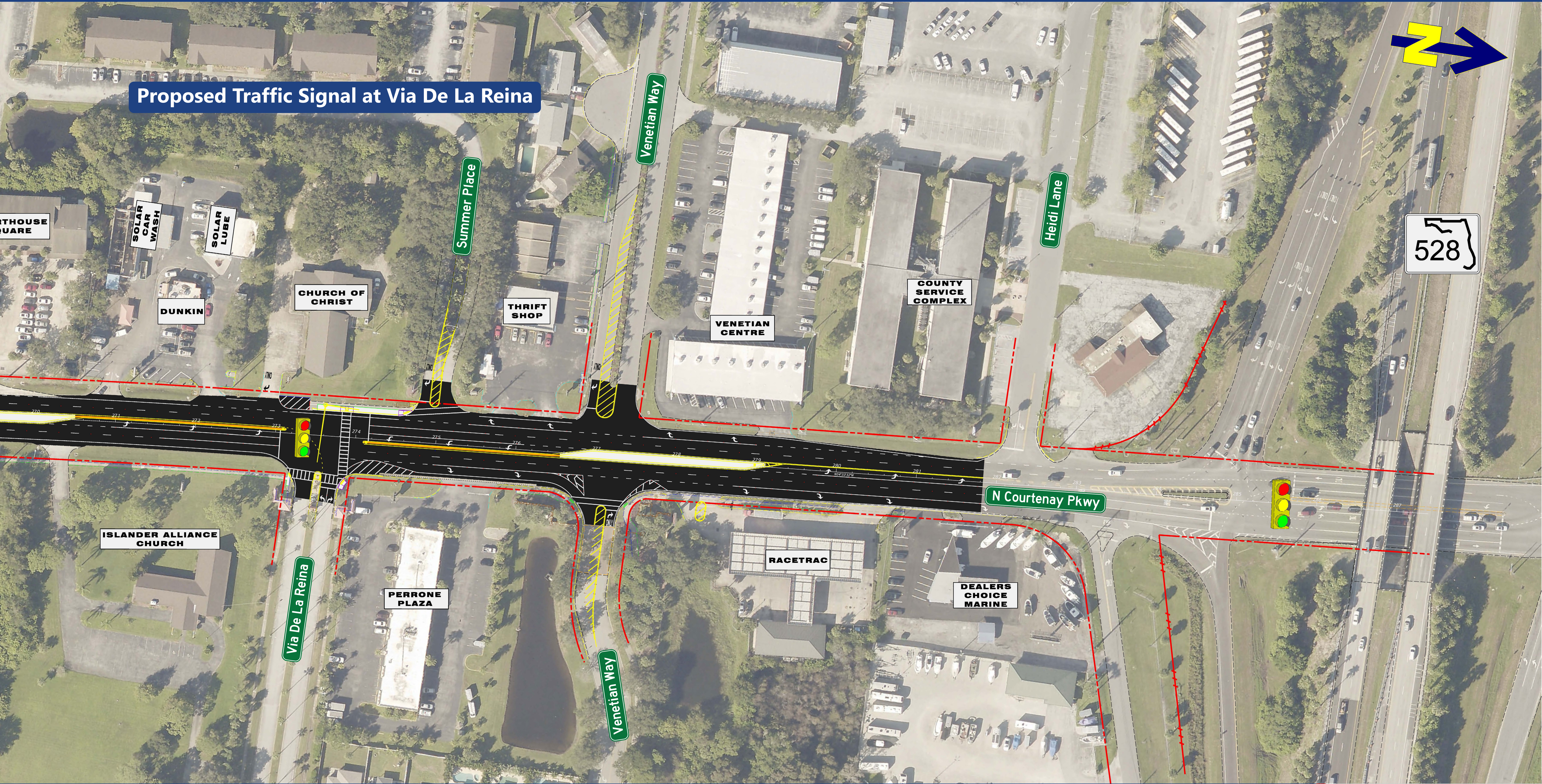


North Courtenay Parkway (S.R. 3) Safety Improvements From Catalina Isle Drive to S.R. 528 Eastbound Ramps

Financial Project Identification (FPID) No.: 453311-1



Stay up to date with project information by scanning the QR code to visit the project website

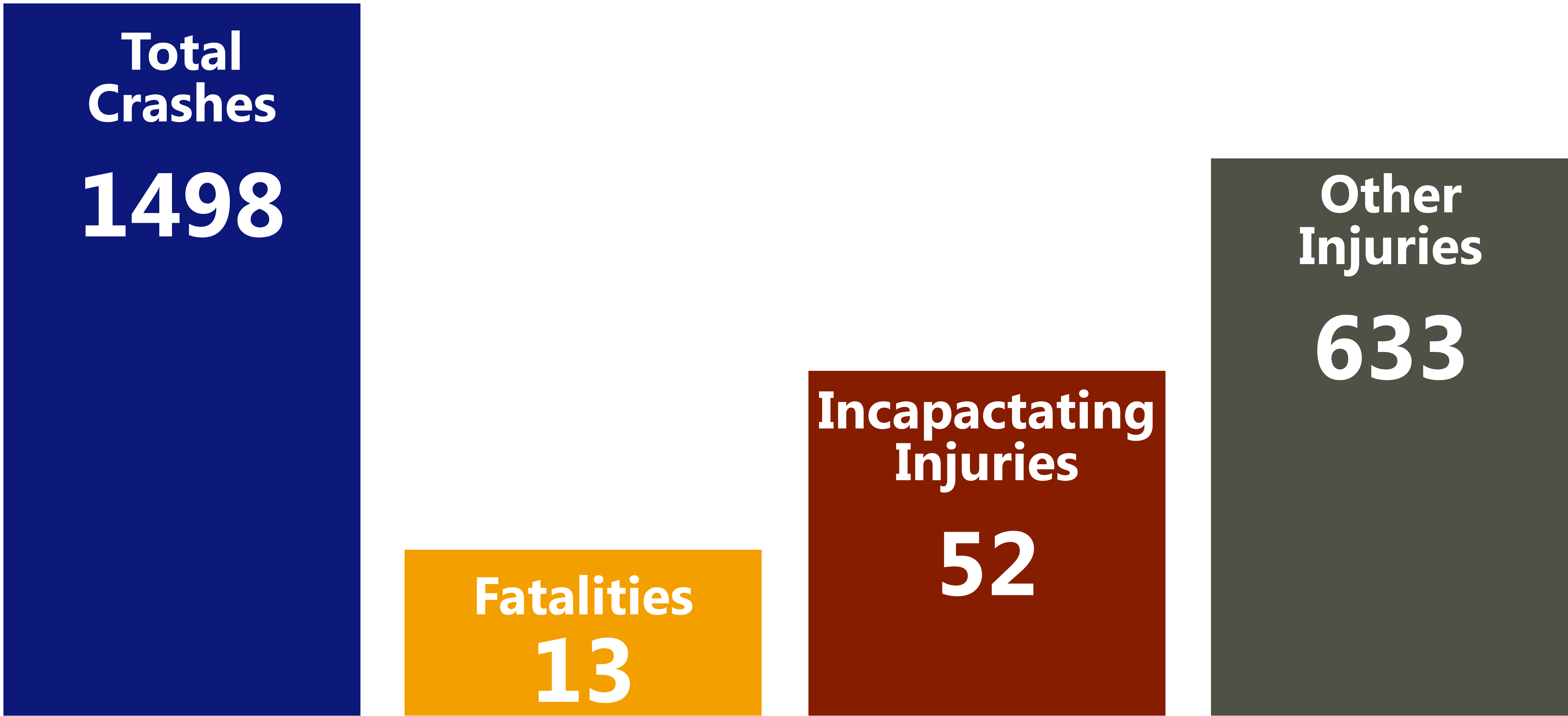


North Courtenay Parkway (S.R. 3) Safety Improvements From Catalina Isle Drive to S.R. 528 Eastbound Ramps

Financial Project Identification (FPID) No.: 453311-1

Crash Statistics

January 1, 2014 – November 14, 2025



Data Sources: FDOT Crash Analysis Reporting System (CARS); University of Florida Signal Four Analytics

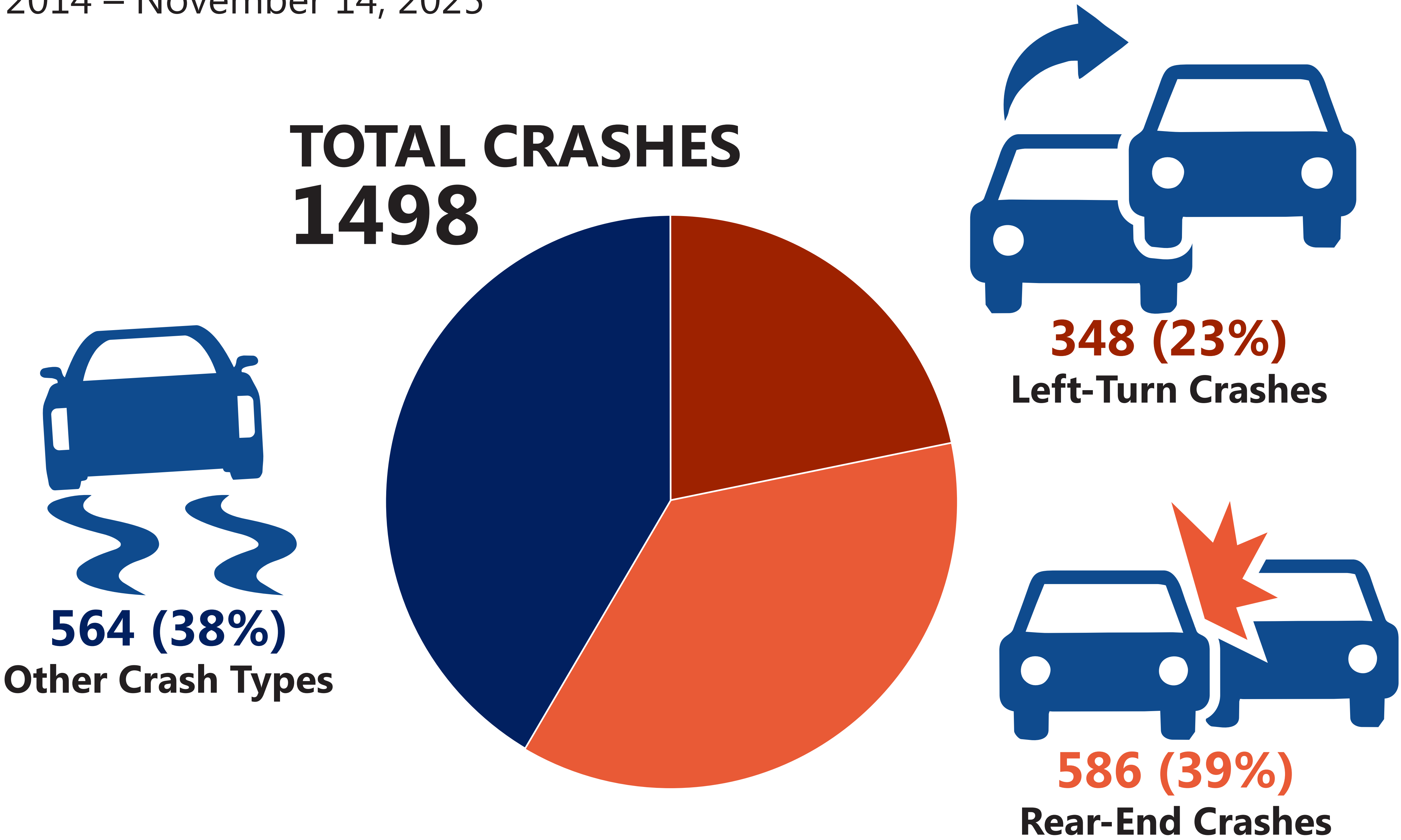


North Courtenay Parkway (S.R. 3) Safety Improvements From Catalina Isle Drive to S.R. 528 Eastbound Ramps

Financial Project Identification (FPID) No.: 453311-1

Crash Types Along the Corridor

January 1, 2014 – November 14, 2025

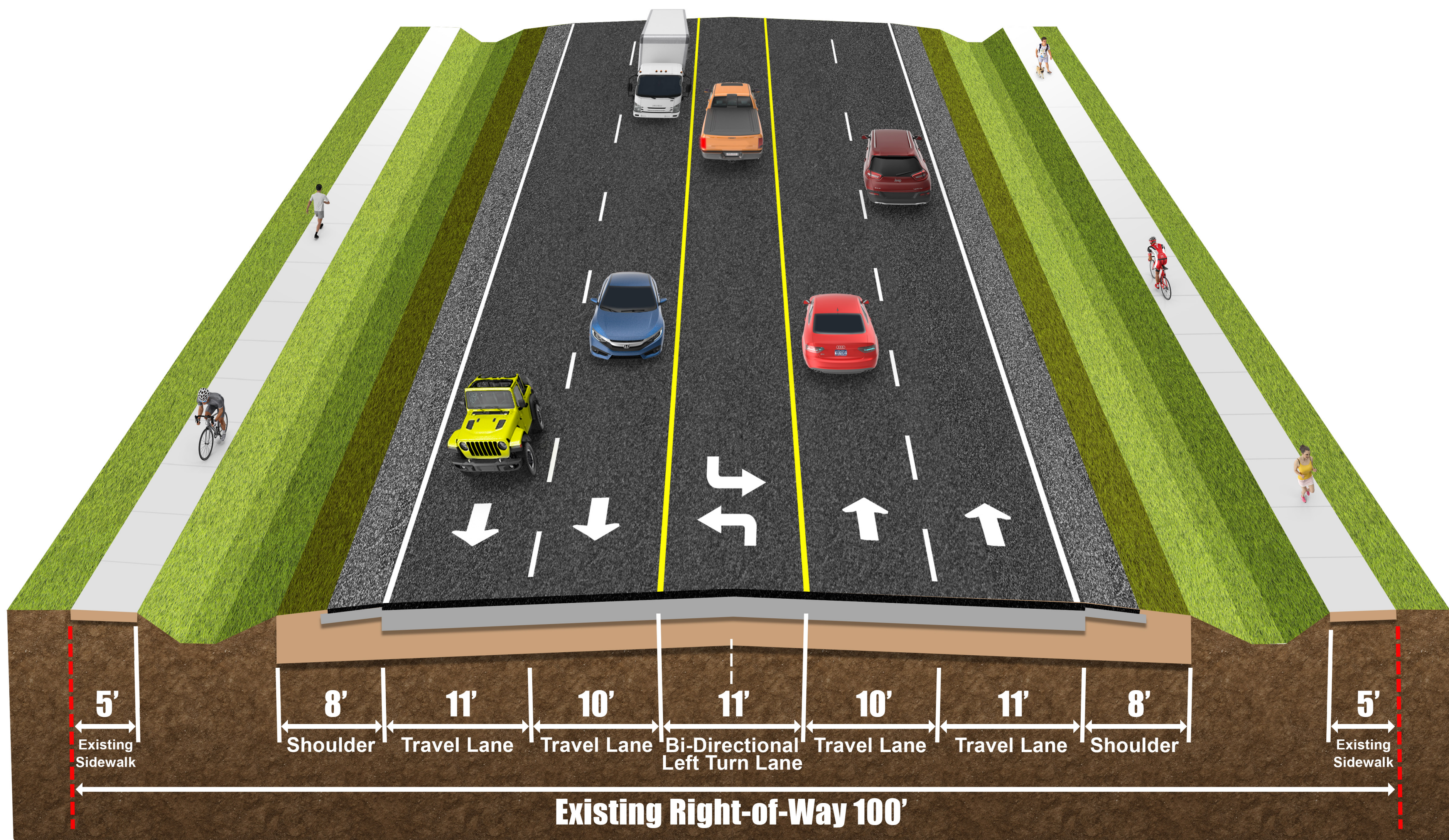


Stay up to date with project information by scanning the QR code to visit the project website

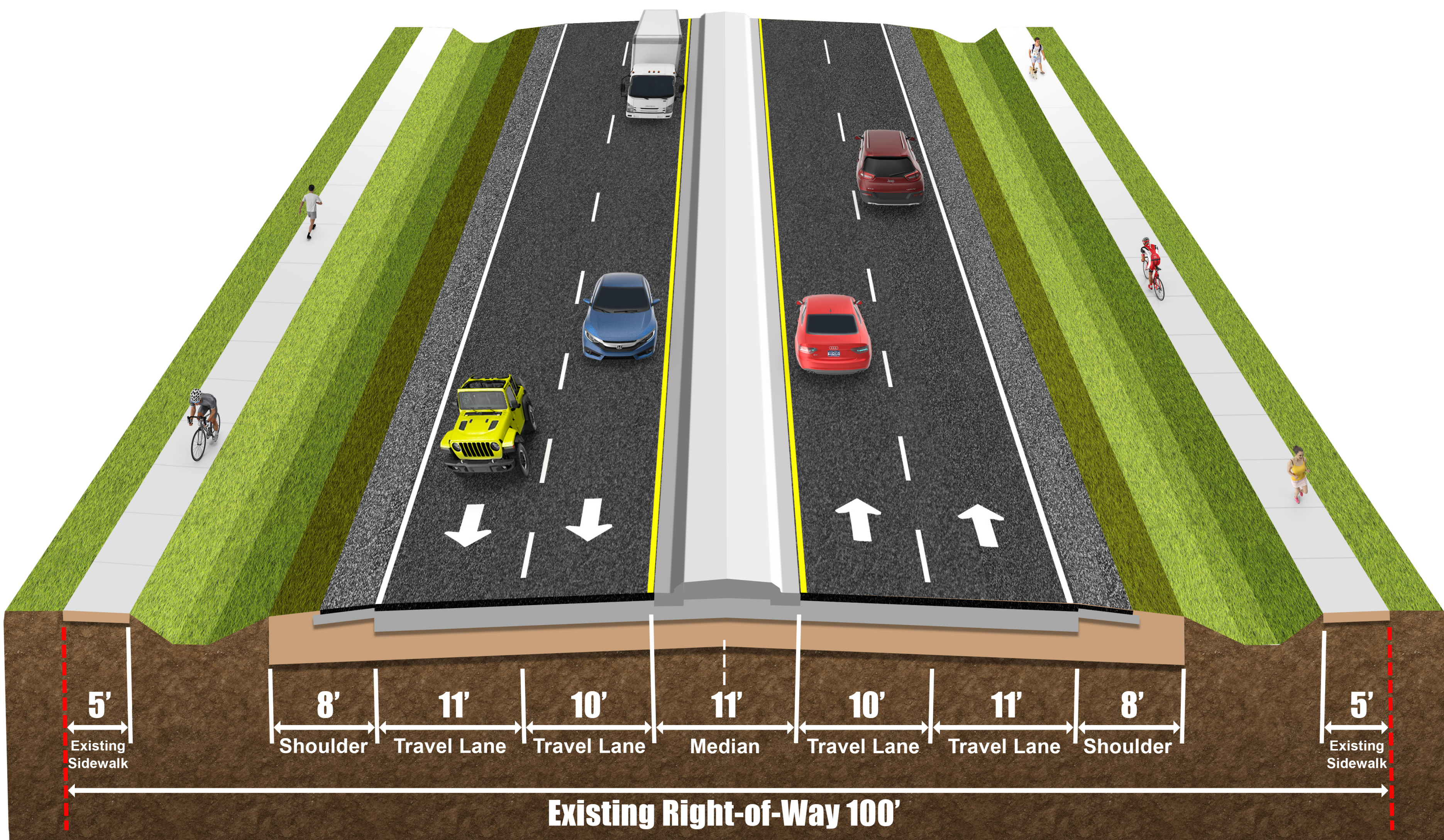


North Courtenay Parkway (S.R. 3) Safety Improvements From Catalina Isle Drive to S.R. 528 Eastbound Ramps

Financial Project Identification (FPID) No.: 453311-1



Existing Typical Section



Proposed Typical Section

Stay up to date with project information by scanning the QR code to visit the project website

