



**MOVING FLORIDA
FORWARD** 
Infrastructure Initiative

INDUSTRY FORUM

**I-95 and U.S. 1 DDI Interchange
Destination Daytona Lane to
Plantation Oaks Boulevard**

October 2, 2025

FPID No.: 419772-3



Agenda

- I. Introductions
- II. Moving Florida Forward
- III. Project Overview
- IV. Project Requirements
- V. Procurement Information
- VI. Draft Request for Qualifications
- VII. Schedule



Introductions



John Tyler, P.E.
District Secretary



Jim Stroz, P.E.
Director of Transportation
Development
Project Executive



Maryam Ghyabi
Ghyabi Consulting & Management
Senior Strategic Advisor



Catalina Chacon, P.E.
DCPME
Program Manager



Kathy Enot
Design Project
Manager



Christine Barone, P.E.
Deputy Program
Manager, Construction



Ed Colon, P.E.
RS&H
Deputy Program Manager,
Design

Introductions



Esther Montoya, P.E.
District Construction



Jason Watts, AICP
MI-4 Program Director of
Innovative Delivery



Morgan County, P.E.
MI-4 Program Director
of Controls

TRC Members:



Ed Kestory, P.E.
District Design
Engineer



John Hatfield, P.E.
District Construction
Engineer



Will Potter, P.E.
Central Office
Director of Design

Moving Florida Forward Initiative

19

**MOVING FLORIDA
FORWARD**
Infrastructure Initiative



MOVING FLORIDA FORWARD

Infrastructure Initiative

CONGESTION RELIEF PROJECTS

- | | |
|--|---|
| 1 U.S. 98 from R. Jackson Blvd. to Hathaway Bridge | 11 Golden Glades Interchange |
| 2 SW 10th St. | 12 I-4 from ChampionsGate to Osceola Pkwy. |
| 3 I-75 at Pine Ridge Rd. Interchange | 13 Poinciana Parkway Ext. Connector from C.R. 532 to S.R. 429 |
| 4 I-75 from Golden Gate Pkwy. to Corkscrew Rd. | 14 I-275 from 38th Ave. N to 4th St. N |
| 5 S.R. 29 from C.R. 846 E to New Market Rd. | 15 I-4 at S.R. 33 Interchange |
| 6 S.R. 29 from New Market Rd. to S.R. 82 | 16 I-4 from U.S. 27 to ChampionsGate |
| 7 I-10 from Eastbound weigh station to Nine Mile Rd. | 17 I-75 at Fruitville Rd. Interchange |
| 8 S.R. 263 from S.R. 61 to C.R. 2203 | 18 W Midway Rd. from Glades Cut Off Rd. to Jenkins Rd. |
| 9 S.R. 70 from Bournside Blvd. to Waterbury Rd. | 19 U.S. 301 Realignment from C.R. 470 to Florida's Turnpike |
| 10 I-75 Auxiliary Lanes from S.R. 44 to S.R. 326 | 20 I-95 at U.S. 1 Interchange in Volusia Co. |



09/22/2023
Subject to change.
Listed alphabetically by county.

I-95 at U.S. 1 Interchange in Volusia Co.

PROJECT DESCRIPTION

- Reconstructs interchange to a Diverging Diamond Interchange
- Widen U.S. 1 from Plantation Oaks Blvd & Broadway Ave
- Widen Destination Daytona Lane from 2 to 3 lanes
- Add shared use paths

COUNTY
Volusia

PROJECT LIMITS
Interstate 95 (I-95) at U.S. 1 Interchange in Volusia County

FUNDING
\$294 Million

CONSTRUCTION
2026

PROJECT LOCATION



REGIONAL
ECONOMIC IMPACT
**\$1.252
BILLION**



PROJECT BENEFITS

MODERNIZES
one of the oldest
interchanges along I-95



ENHANCE
traffic flow by increasing
**LEFT-TURN
CAPACITY**



New design handles
**HIGHER
VOLUMES
OF TRAFFIC**

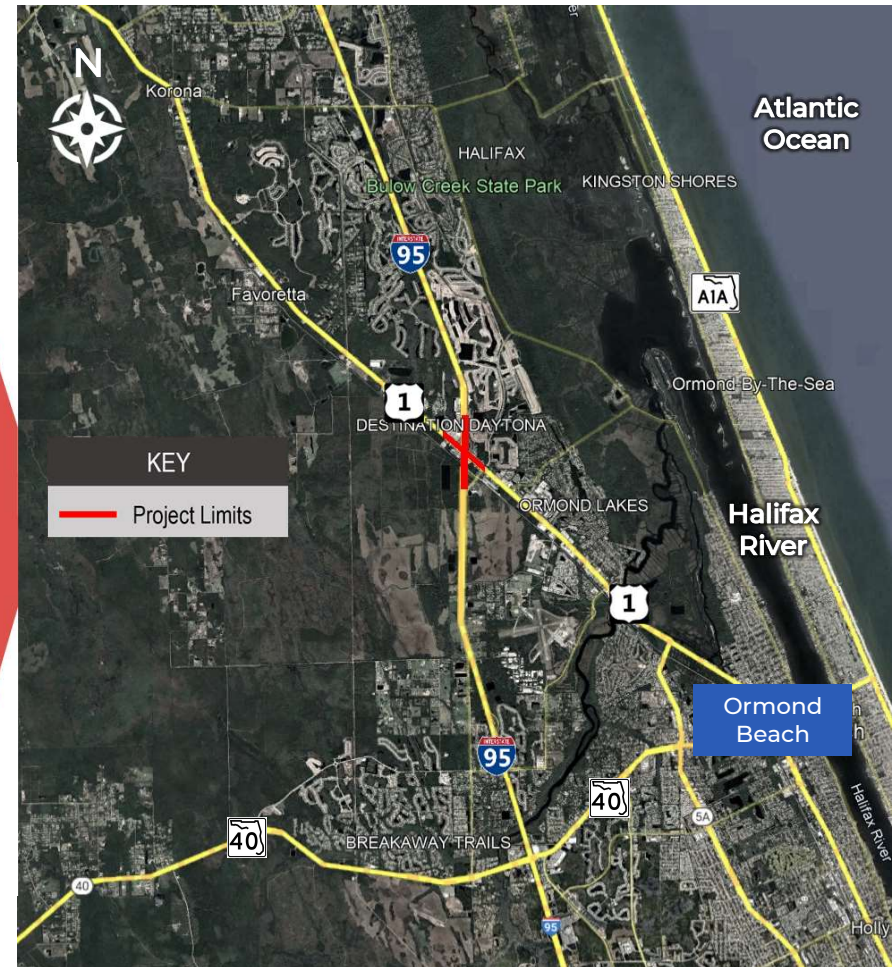
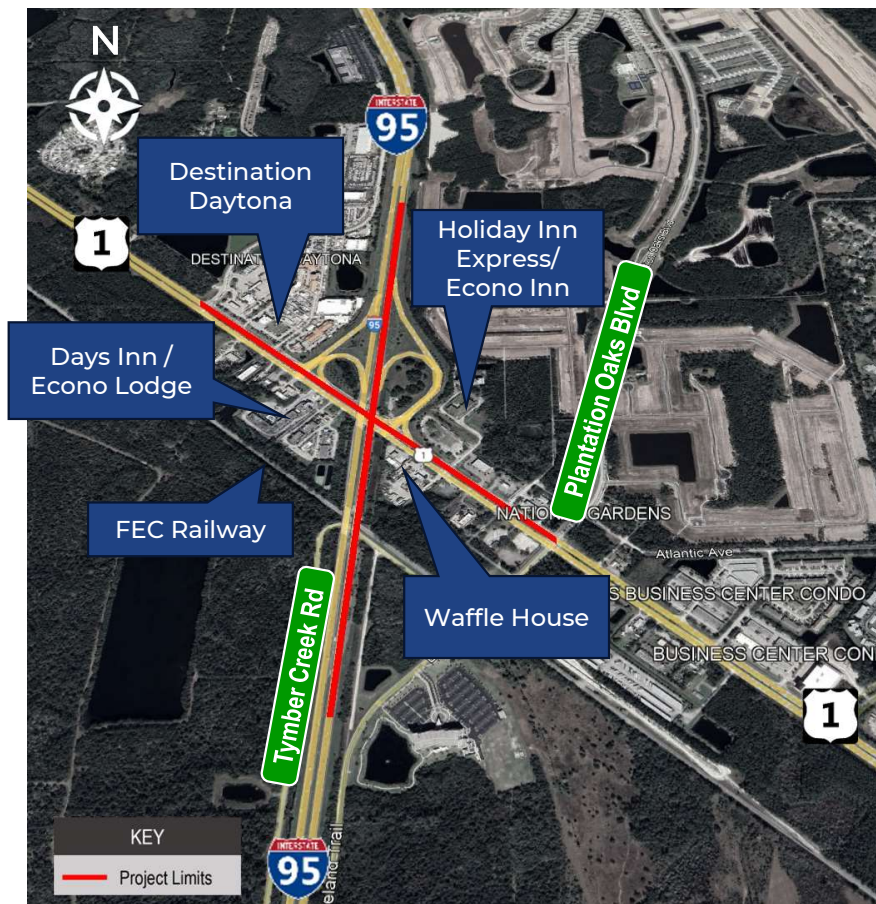


ENHANCES
this major route in
case of emergency
evacuations



MOVING FLORIDA
FORWARD
Infrastructure Initiative

I-95 and U.S. 1 - Project Overview



Project Purpose and Need



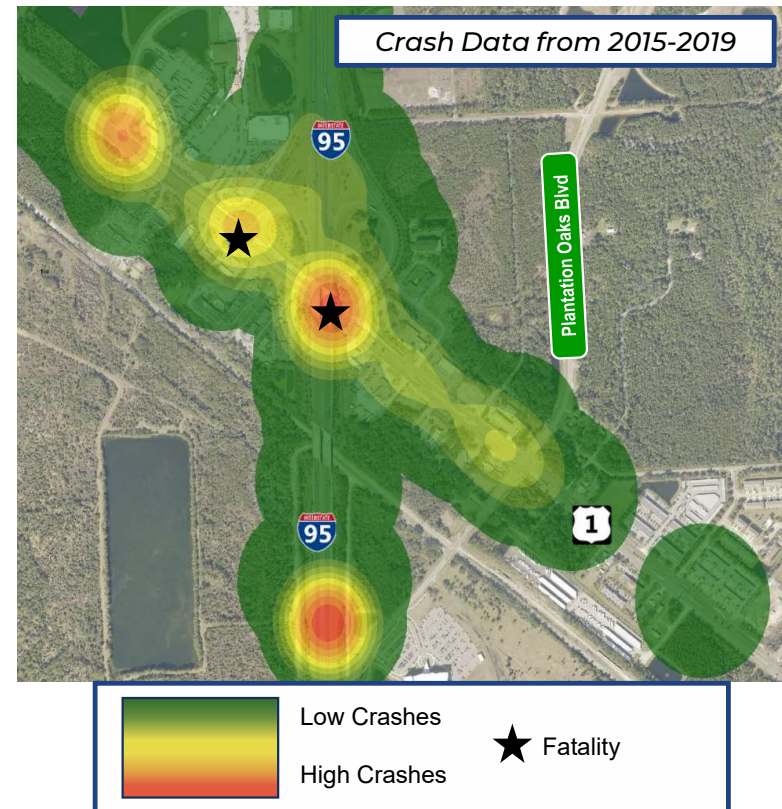
Improve traffic operations and mobility



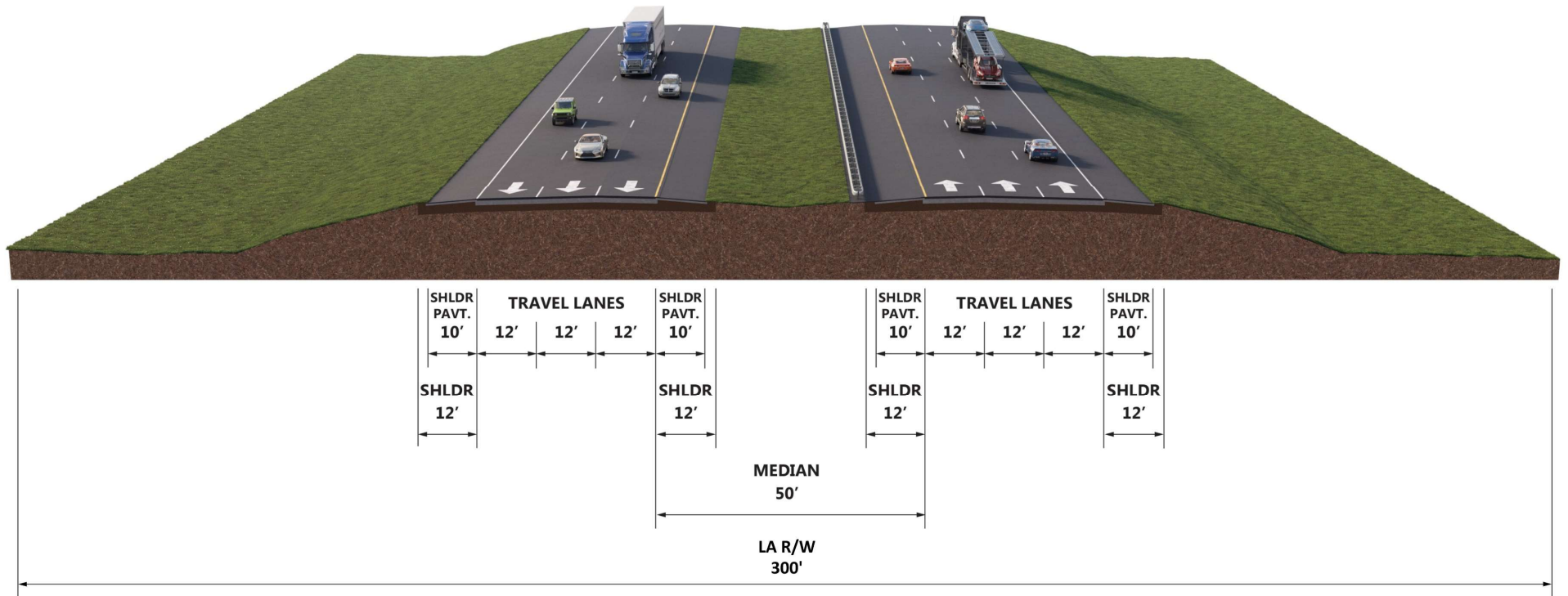
Reduce congestion



Enhance safety for all travel modes



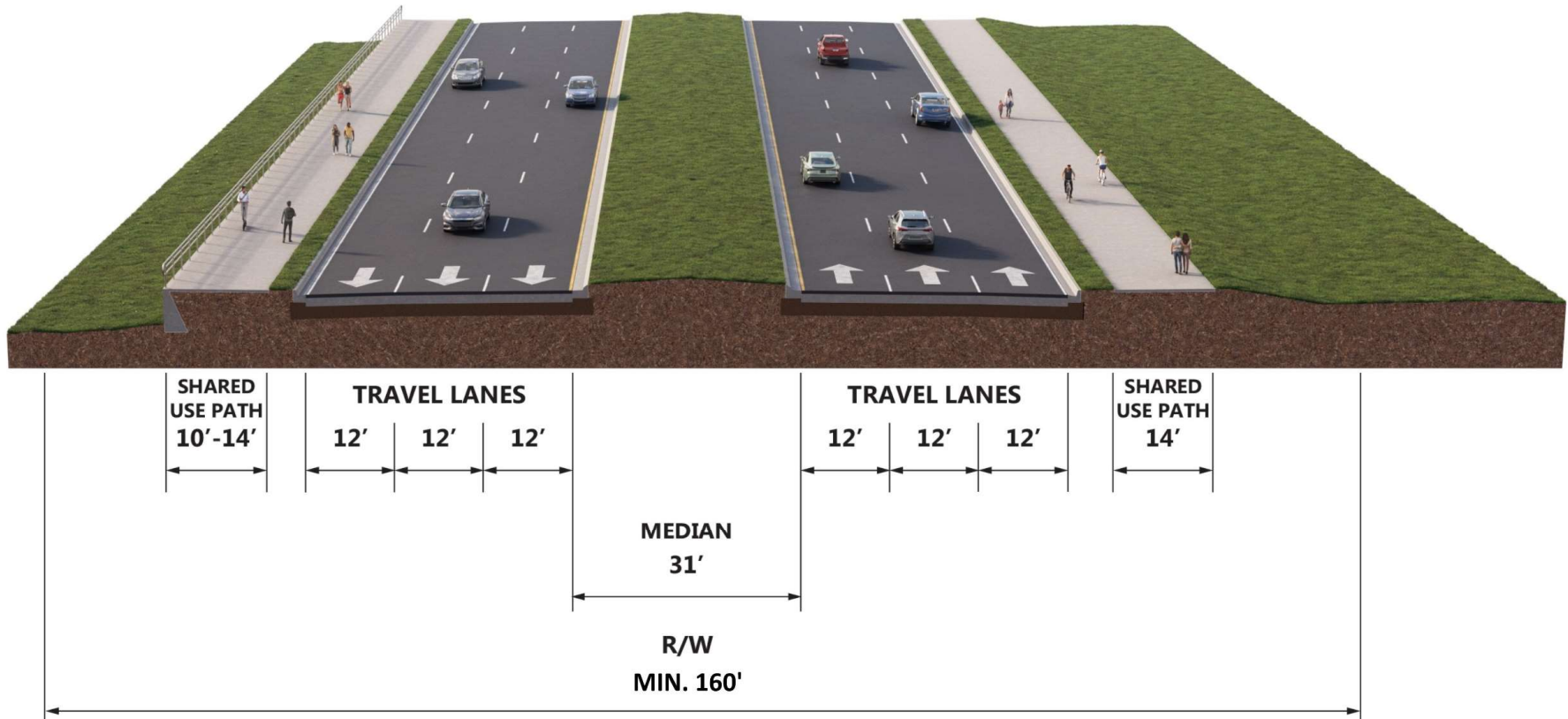
I-95 Typical Section



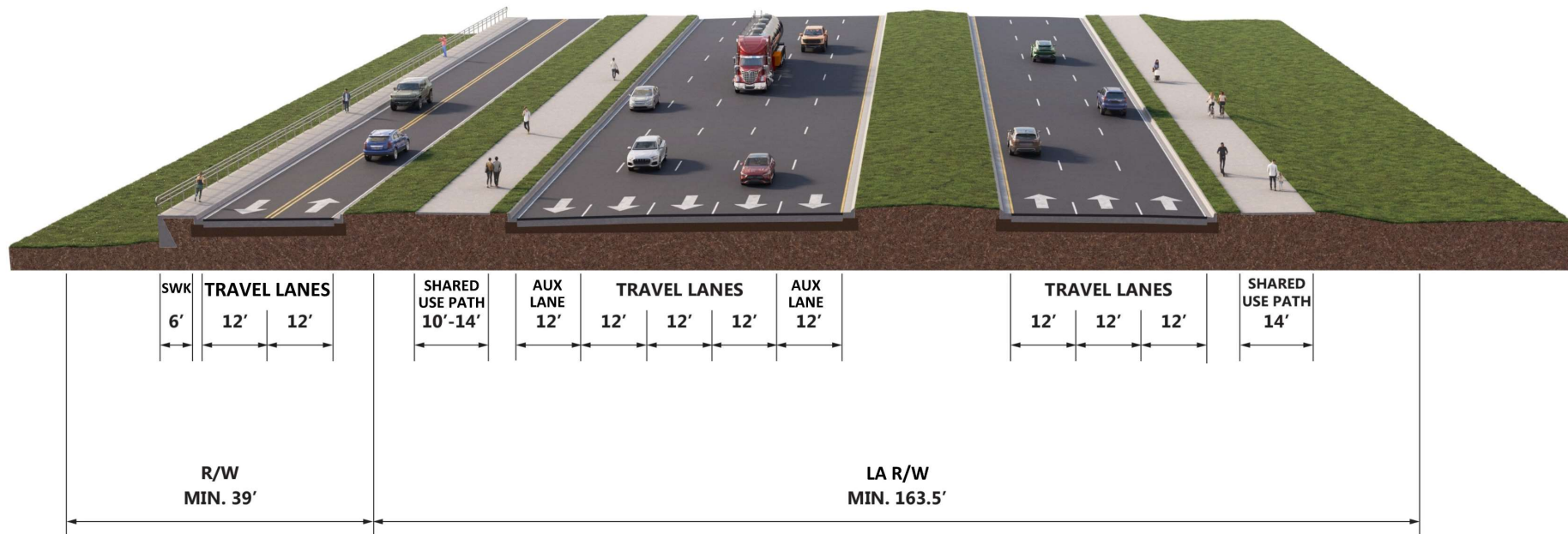
I-95 Improvements



U.S. 1 Typical Section – East of I-95



U.S. 1 Typical Section – West of I-95



U.S. 1 Improvements



U.S. 1 east side of I-95 looking west

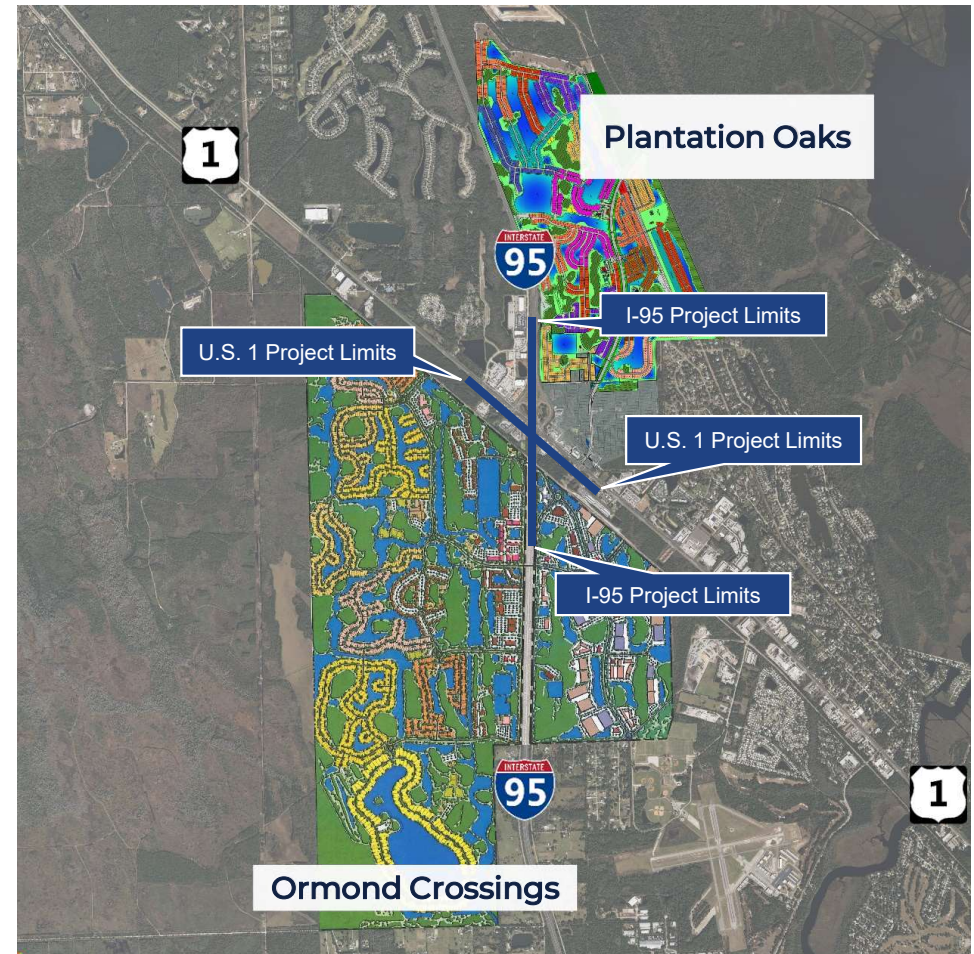
Future Area Development

➤ Ormond Crossings

- 3,000 acres
- 2,950 residential units
- 900,000 square feet of office space
- 800,000 square feet of industrial space
- School

➤ Plantation Oaks

- 1,044 acres
- 1,500 residential lots



Key Project Features – Utility Coordination

➤ Utilities

- High probability of major relocations and adjustments on U.S. 1

➤ Communications Tower

- Avoid impacts
- Part of FDOT Statewide Microwave System
- Primary backhaul for transportation data



Key Project Features – Utility Coordination

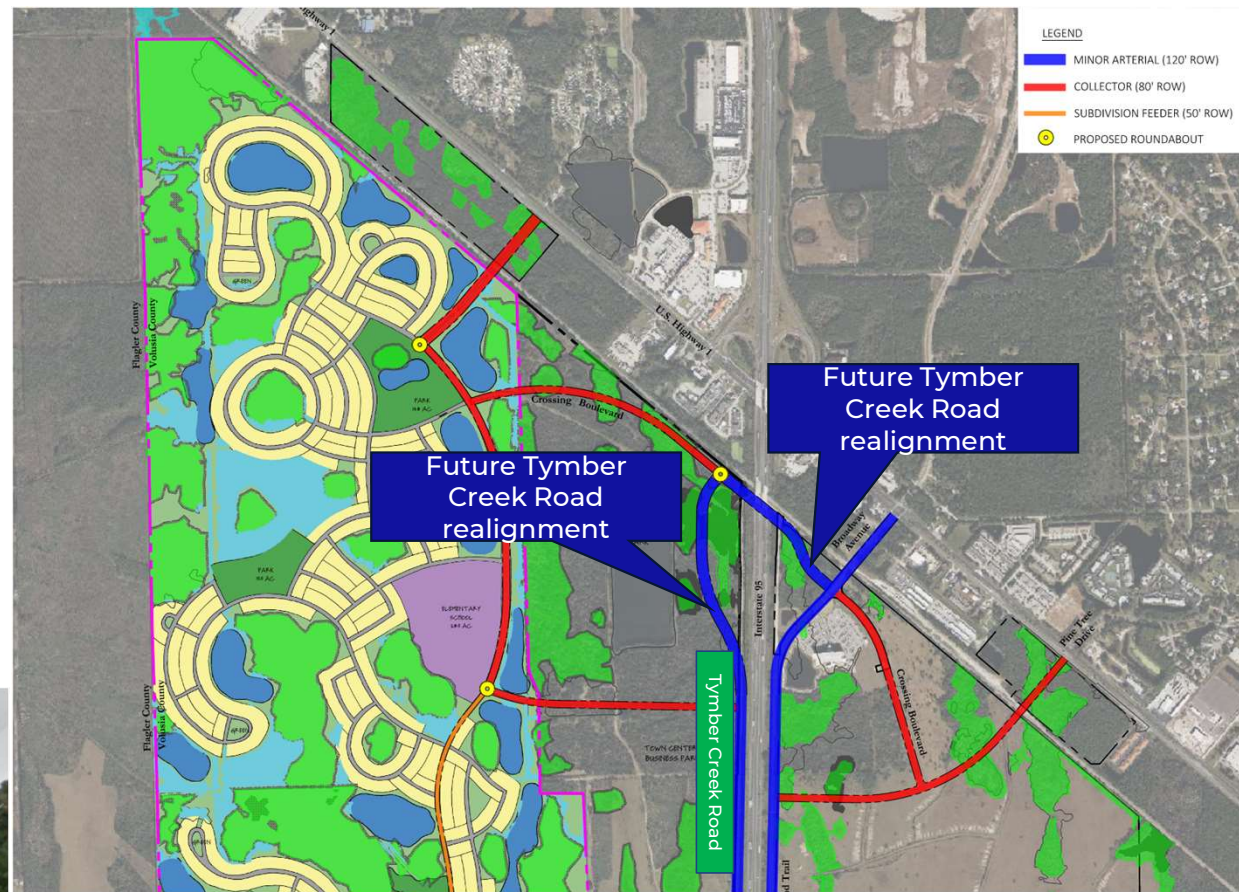


at&t



Key Project Features – Ormond Crossings

- Phase I design ongoing
- Utility Crossing proposed below I-95
- Future relocation of North Tymber Creek Road
- Potential new crossings and road connections to U.S. 1
- Potential for ITS/Signal interconnection on U.S. 1

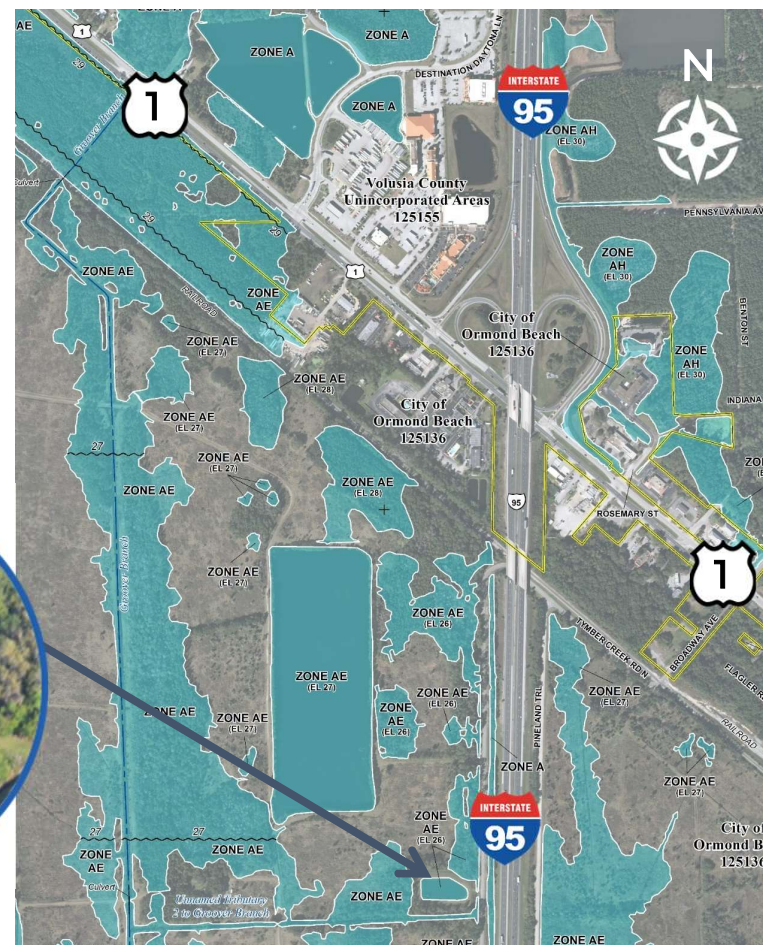


Key Project Features – Environmental



Key Project Features – Permitting

- ERP applications submitted to SJRWMD
- RAI #1 received
- Anticipate receiving ERP permit prior to AIC phase
- Permit mod (by FDOT) anticipated
 - Portion of Frontage Road originally to be constructed by Ormond Gateway developer (Wawa)



Project Notes – PD&E Commitments

PD&E Study Commitments

- Mitigation for impact to wood stork suitable foraging habitat
- U.S. Fish and Wildlife Service (USFWS) protection measures East Indigo Snake
- Garbage removal from construction site; bear proof containers



Project Notes



- Stakeholder Engagement
 - City of Ormond Beach
 - Volusia County
 - FEC Railway
 - General public
 - Ormond Crossings Developer
- Temporary Traffic Control Plan
 - Temporary bridge over U.S. 1
 - Detours

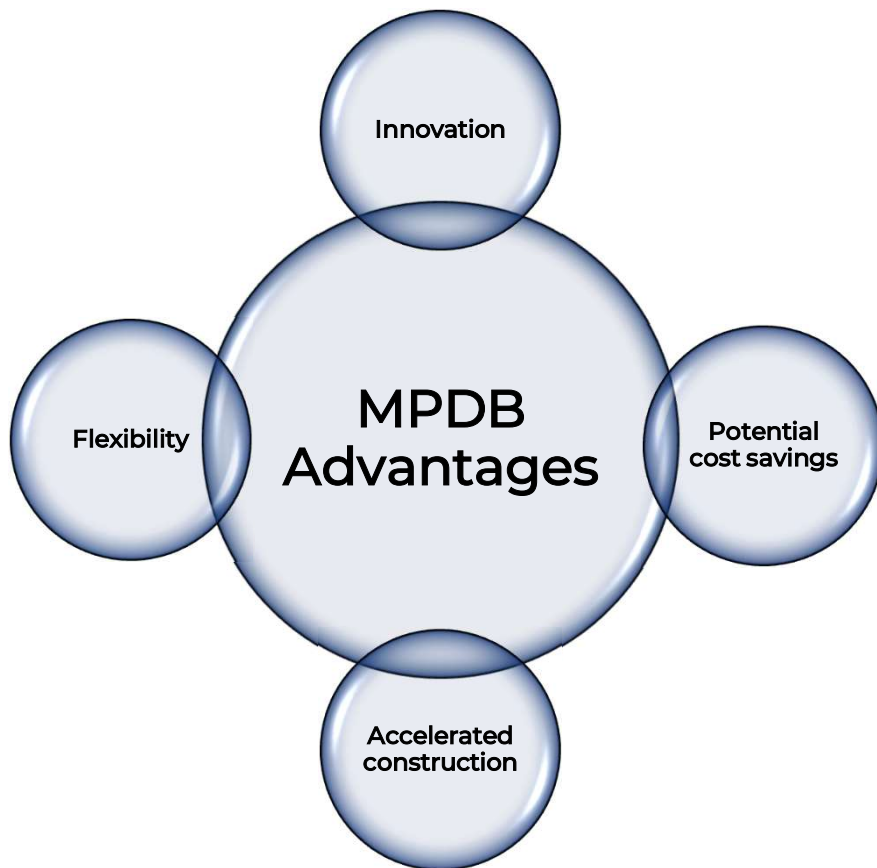
Temporary Traffic Control Plan Notes



Iron Horse Saloon on U.S. 1

- Special events include:
 - Daytona Speed Weeks
 - Daytona Bike Week
 - Spring break
 - Biketoberfest
 - Jeep Week
 - Wawa 250
 - Coke Zero 400
- Up to two lanes can be closed on I-95
- I-95 lane closures in one direction only
- Emergency use shoulder plan in effect during evacuation

Method of Delivery & Schedule



MPDB Procurement Schedule

Advertisement November 3, 2025

Letters of Response November 17, 2025

Notification of Award December 29, 2025

Contract Execution January 23, 2026

Anticipated AIC Phase February 2026

Team Characteristics

Flexibility / Adaptability

Strong Communication

Ability to manage many moving parts

Ability to manage project information

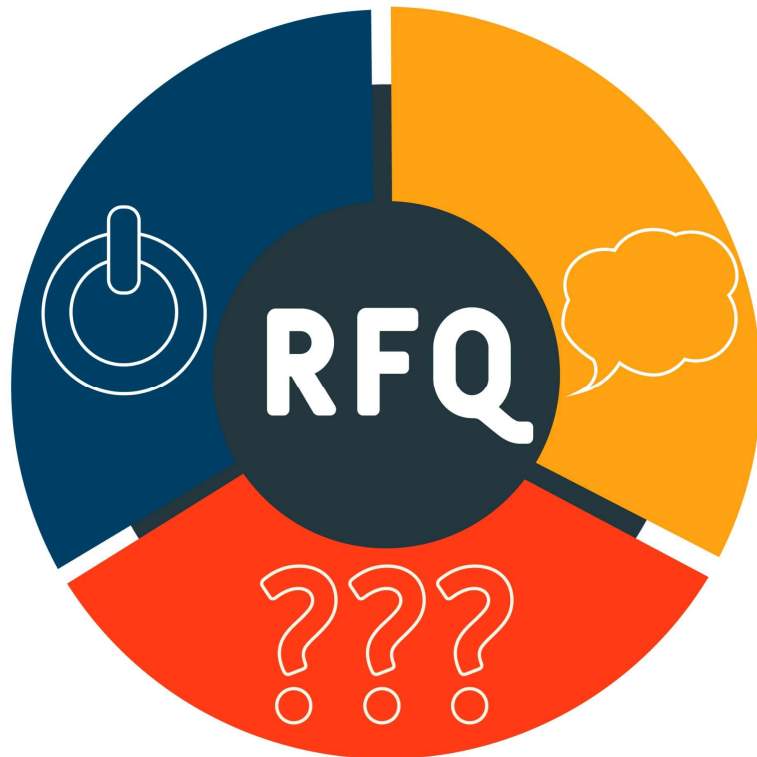
Commitment to supplying experienced staff / resources

Technical expertise

Problem solving

Dedication to strong team coordination

Request for Qualification (RFQ) Feedback



- The Department seeks to partner with the industry to develop an effective RFQ.
- Firms are invited to provide comment on the draft document over the next few weeks.
- Marketing Meetings will be held on October 20th, 2025.
- Final RFQ will post on November 3 on the CAP website.



Modified Phased Design-Build (MPDB)

MPDB Outreach & Engagement

- » Early Engagement of Industry Partners
- » Presentations, Roundtables, Webinars, and Q&A Sessions
- » Website Updates
- » Continuous solicitation of input and one-on-one conversations with industry throughout the year



Modified Phased Design-Build (MPDB)

Basic Premise

Multiple teams **selected** based on qualifications

Teams compete **post-selection** to build
the project

MPDB Essential Team Components



MPDB

Selected Teams are:

Highly Motivated

Innovative & Collaborative

Cost-Competitive

Schedule-Driven

MPDB – Resulting Benefits

MPDB

Benefits:

High Quality

Less D-B Firm Risk

High Value

Increased Opportunities

Reduced Durations

Overall Project Savings



MPDB - Selection Process



MPDB

Multiple teams selected and enter
into contracts with FDOT

MPDB – Innovation Phase

MPDB

Procurement is over

Teams are under contract and paid to go through innovation phase



MPDB – AIC Phase Process



MPDB

Innovate and **Collaborate**

Submit **Risk Register**

Submit Request to Continue
(RtC) Package

Submit Project Guaranteed
Maximum Price **(PGMP)**

MPDB – Risk Process

MPDB

Risk Register provided by team(s)
10-days prior to RtC submission

FDOT develops and provides **Risk Reserve**
with categories and an overall value

Risk Reserve included in the PGMP
as a **non-bid** item

Risk Reserve includes “**Other Risks**” category (**max 10%**)



MPDB – Risk Process



MPDB

Risk Reserve **does not** encompass all risks on the job

Teams will **price the job accordingly** based on the assigned risk pool value

MPDB – Determination Process

MPDB

Ranking of team's commitment, collaboration, innovations, and overall schedule

Adjusting teams' score **relative to each other** using a **weighted formula** for both innovation/collaboration and price

Task Work Order(s) issued for Design and Construction to the team with the highest score



MPDB – Opportunities & Incentives

MPDB

Projects offer certain elements of work to be incentivized if delivered early

Unused portion of design expense allocation paid to DB Firm and earned by designer



MPDB – Opportunities & Incentives

MPDB

20% of the difference between the **Design Phase GMP** and the final Design Phase amount used is paid to the DB Firm (earned by designer)

DB Firm shall receive **14% of the Shared Savings** (PGMP – fees paid)



MPDB – Opportunities & Incentives

MPDB

If a non-selected Design-Build Firm's innovations are utilized and result in a saving to the selected firm's PGMP, the **non-selected firm is entitled to 14% of the savings**



MPDB – Whole Project Contingency

MPDB

Only covers E&O Claims made by the Design-Build Firm concerning its consultant designer

No E&O Claims made, **FDOT pays 50%** of the WPC to the Design-Build Firm (25% earned by Contractor and 25% earned by the Designer)



MPDB – Construction Work Packages

MPDB

Construction Work Packages **limited to four:**

- Advanced Construction Works (~10%)
- Early Works (~15%)
- Major Works (~50%)
- Finishing Works (~25%)



CEI Procurement

CEI Procurement Schedule

Project-specific Full CEI Contract

Selection Method: Expanded Letter of Response (ELOR)

Post Advertisement December 22, 2025

Letters of Interest January 12, 2026

Final Selection February 9, 2026



Rafael
Rodriguez, P.E.
District
Designee

TRC Members



Kevin Hayden, P.E.



Ray Gopal, P.E.



Tammie Andrews, P.E.

Questions

Kathleen Enot
FDOT Project Manager
719 South Woodland Boulevard
DeLand, FL 32720
386-943-5149
Kathleen.Enot@dot.state.fl.us





Thank you!

