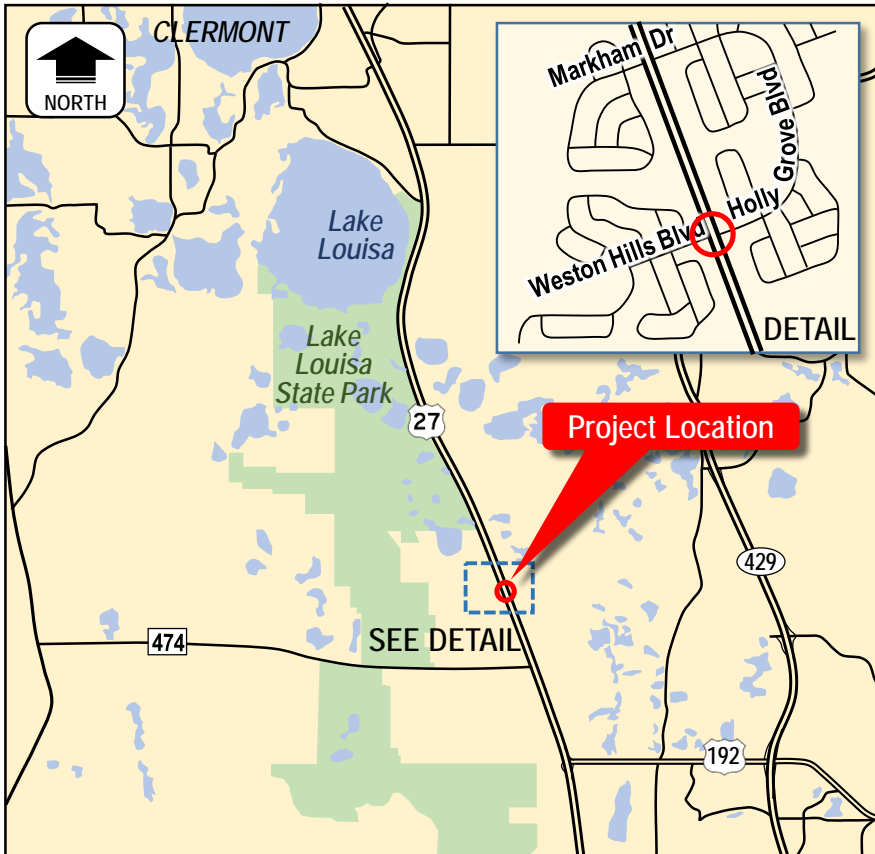


U.S. 27 and Weston Hills Boulevard/Holly Grove Boulevard Safety Improvements – Median Modification Lake County

Public Hearing – June 19, 2018



HEARING LOCATION

Clermont Arts & Recreation Center

3700 South Highway 27

Clermont, FL 34711

AGENDA

5:00 PM

- Please sign in
- Pick up a speaker request card if you wish to speak after the presentation, and/or a comment card if you would like to make a written statement
- Open House—project staff available to answer questions

6:00 PM

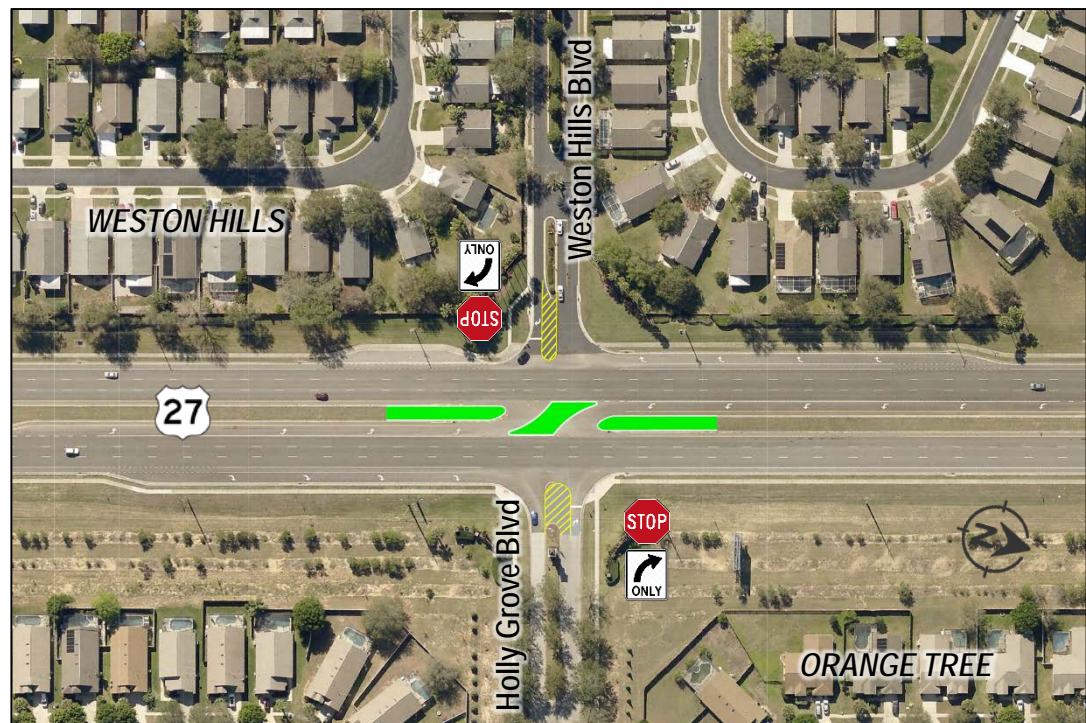
- Presentation
- Public comments

7:00 PM

- Meeting ends

Project Description

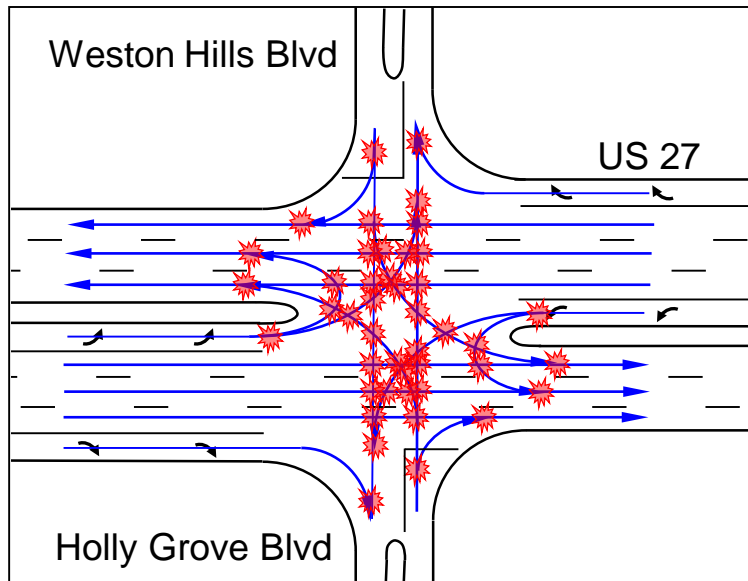
This project addresses operational and safety concerns in the area by converting the existing full median opening to a bi-directional median opening. Left turns from U.S. 27 onto Weston Hills Boulevard and Holly Grove Boulevard will still be permitted, and sight lines will be improved due to the lack of vehicles stacking in the median. Traffic entering U.S. 27 from both of the side streets will be converted to a right turn only lane. These modifications reduce the number of conflict points at the intersection, which improves safety.



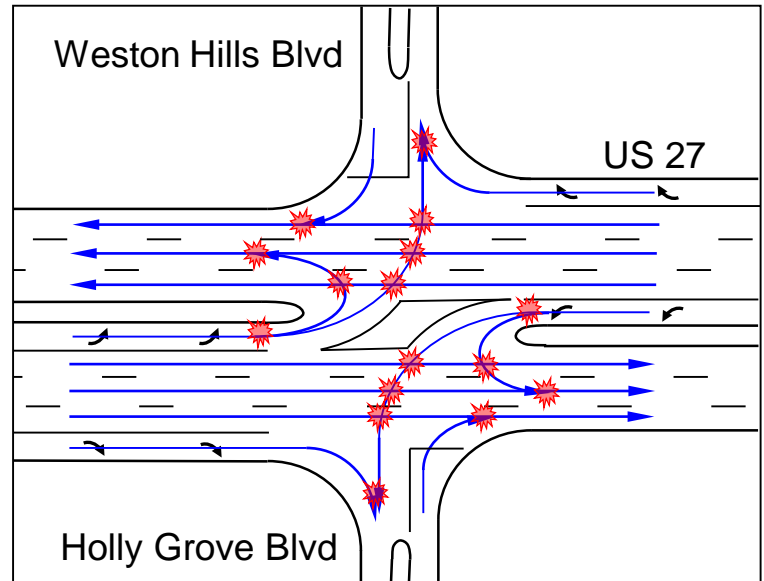
Access Management – Median Openings

Conflict points are locations along a roadway where two vehicles' paths can legally cross. There could be more than 42 conflict points at a four way intersection.

Each conflict point is a location where a crash can occur. A basic principle of access management is to limit the number of conflict points along a roadway by minimizing the number of driveways and median openings and restricting certain movements at some median openings. Drivers can be overwhelmed by conflict points in close proximity to one another, increasing the potential for crashes.



Before Access Management = More Conflicts



After Access Management = Less Conflicts

A typical median opening that allows all turns has numerous conflict points. One way to limit the number of conflicts is through the design of median openings. The U.S. 27 intersection with Weston Hills Boulevard/Holly Grove Boulevard is a four-way intersection containing numerous conflict points. The placement of a directional median opening greatly reduces the number of conflict points at this intersection by limiting the number of allowed turning movements.

Public Comments

Thank you for your participation. Your input is important and any comments are appreciated. We encourage you to fill out a comment card, which is available at the sign-in table, and drop it in the comment box, or return it by mail to the address on the back of the card no later June 29, 2018.

Written comments may also be submitted by mail to:

Dave Mixon
FDOT District Five Traffic Operations
719 South Woodland Boulevard
M.S. # 562
DeLand, FL 32720

Or by email to:

 Dave.Mixon@dot.state.fl.us



Public participation is solicited without regard to race, color, national origin, age, sex, religion, disability or family status. Persons wishing to express their concerns relative to FDOT compliance with Title VI may do so by contacting FDOT District Five Title VI Coordinator Jennifer Smith, at Jennifer.Smith2@dot.state.fl.us.