

State Road 25/U.S. 27 at Highland Lakes Boulevard

Safety Improvements - Median Modification Public Hearing



Thursday, October 26, 2017
The Fellowship at 27 Church
25900 U.S. Highway 27
Leesburg, FL 34748

Agenda

5:00 PM

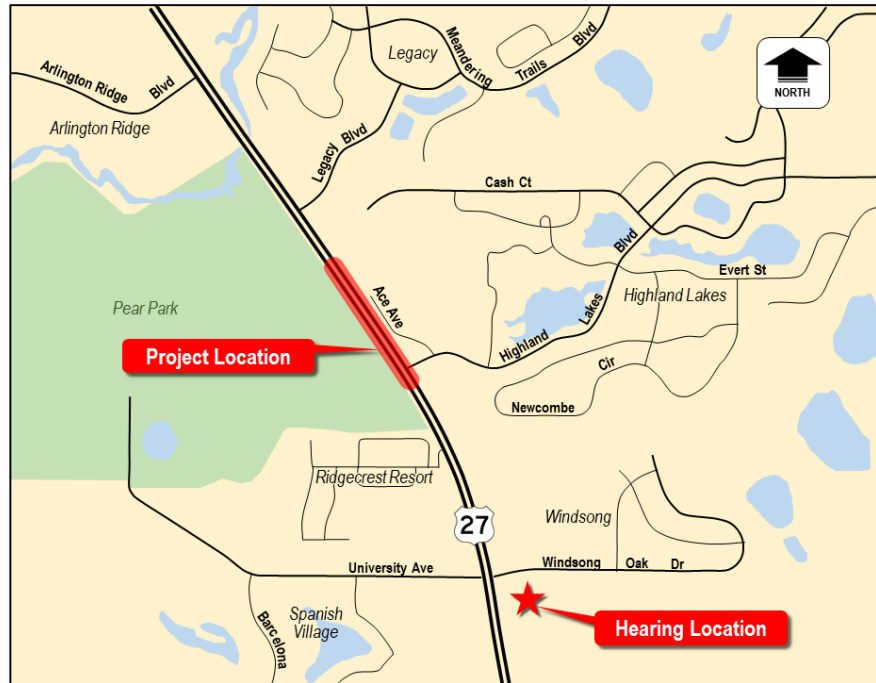
- Please sign in
- Pick up a speaker request card if you wish to speak after the presentation, and/or a comment card if you would like to make a written statement
- Open House—project staff available to answer questions

6:00 PM

- Presentation
- Public comments

7:00 PM

- Meeting ends



Proposed Improvements:

Based on the results of a Signal Warrant Study performed in March of 2016 at this location, the existing full median opening at Highland Lakes Boulevard will be converted by the Florida Department of Transportation to a southbound directional median opening; Southbound left turns onto Highland Lakes Boulevard, and northbound right turns out of Highland Lakes Boulevard will still be allowed, but southbound left turns will be prohibited. As part of these safety improvements, a designated northbound directional median opening is proposed for U-Turns to the north of this intersection.

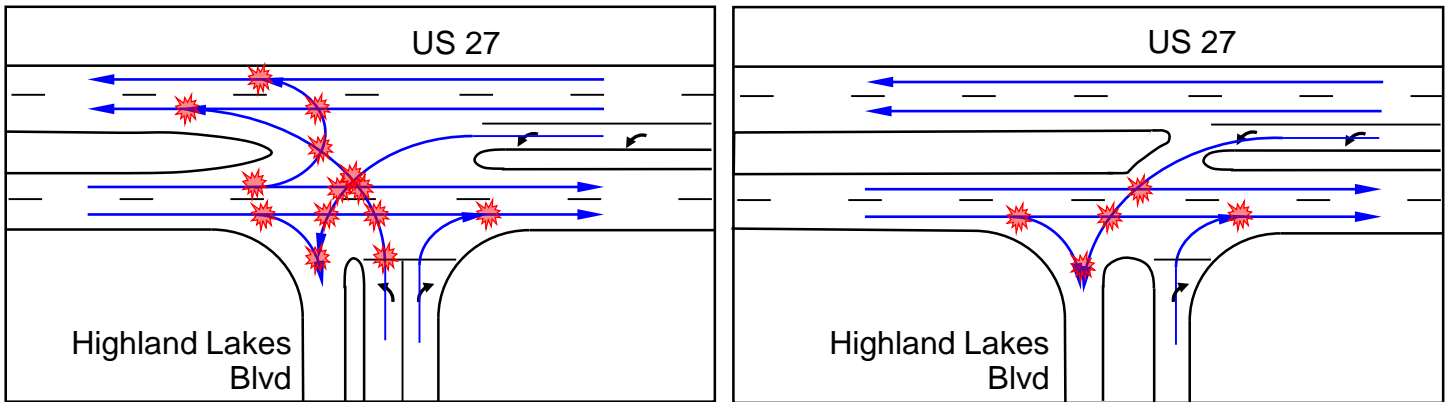
Proposed Improvements



Access Management – Median Openings

Conflict points are locations along a roadway where two vehicles' paths can legally cross. At a four way intersection there are as many as 36 conflict points.

Each conflict point is a location where a crash can occur. A basic principle of access management is to limit the number of conflict points along a roadway by minimizing the number of driveways and median openings and restricting certain movements at some median openings. Drivers can be overwhelmed by conflict points in close proximity to one another, increasing the potential for crashes.



Before Access Management = More Conflicts

After Access Management = Less Conflicts

A typical median opening that allows all turns has numerous conflict points. One way to limit the number of conflicts is through the design of median openings. The above example on the right is a “directional” median opening serving a side street that allows for left-turns from the major street but prohibits left-turns from the minor street. This is a design which greatly reduces the conflict points by limiting the number of allowed turning movements.



For more information visit:
www.CFLroads.com



Public Comments

Thank you for your participation. Your input is important and any comments are appreciated. We encourage you to fill out a comment card, which is available at the sign-in table, and drop it in the comment box, or return it by mail to the address on the back of the card no later than November 6, 2017.

Written comments may also be submitted by mail to:

Steven Buck, PE
Florida Department of Transportation
District Five Roadway Design
719 South Woodland Boulevard
M.S. # 543
DeLand, FL 32720

Or by email to:

Steven.Buck@dot.state.fl.us



Public participation is solicited without regard to race, color, national origin, age, sex, religion, disability or family status. Persons wishing to express their concerns relative to FDOT compliance with Title VI may do so by contacting Jennifer Smith, FDOT District Five Title VI Coordinator by phone at (386) 943-5367, or via email at Jennifer.Smith2@dot.state.fl.us.