

# Regional Transportation Management Center



**Design Public Information Meeting**

**May 31, 2016**

**Financial Project ID Number: 437100-1-32-01**



# Regional Transportation Management Center



## Florida Department of Transportation

This meeting and project are being conducted without regard to race, color, national origin, age, sex, religion, disability or family status. Persons wishing to express their concerns relative to FDOT compliance with Title VI may do so by contacting:

Jennifer Smith  
FDOT District Five Title VI Coordinator  
719 South Woodland Boulevard  
Deland, Florida 32720  
386-943-5367  
[Jennifer.smith2@dot.state.fl.us](mailto:Jennifer.smith2@dot.state.fl.us)

Jacqueline Paramore  
State Title VI Coordinator  
605 Suwannee Street, Mail Station 65  
Tallahassee, FL 32399-0450  
850-414-4753  
[Jacqueline.paramore@dot.state.fl.us](mailto:Jacqueline.paramore@dot.state.fl.us)

This meeting and project are being conducted without regard to race, color, national origin, age, sex, religion, disability or family status. Persons wishing to express their concerns relative to FDOT compliance with Title VI may do so by contacting the Department personnel shown here.

All inquiries or complaints will be handled according to FDOT procedure and in a prompt and courteous manner.

# What is a Transportation Management Center?



- The Regional Transportation Management Center (RTMC)
  - Monitors Traffic
    - Uses cameras along roadways (as seen on news)
    - Detectors determine speed and number of cars to detect crashes
  - Coordinates with Law Enforcement and Fire
    - Gets right equipment on scene faster in right location
    - Dispatches Road Rangers
    - Not used for speed enforcement or other enforcement activities

# What is a Transportation Management Center?



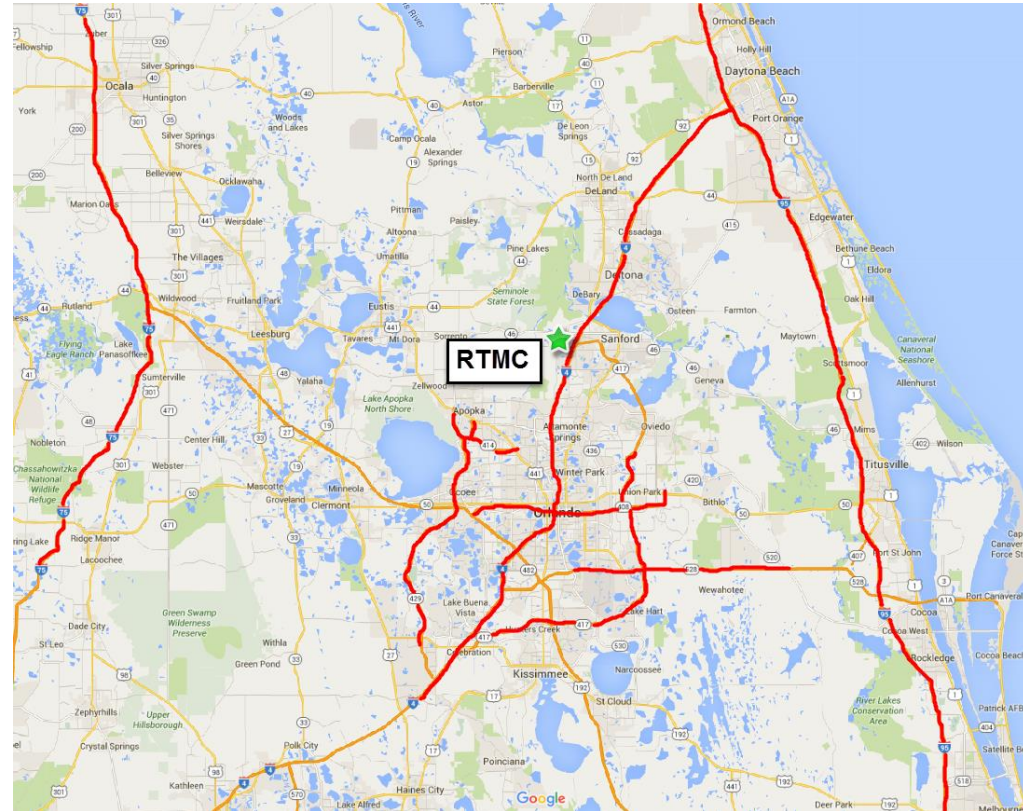
- Monitors and improves signal timing
  - Minimize effects of I-4 Ultimate detours
  - Assist local agencies with reoccurring congestion
- Will price Express Lanes
- Provides Information
  - FL511.com, 511, 511 App, Social Media, New Agencies, and Waze



# Where does Transportation Management Center Effect?

- Monitors Traffic & Coordinates with Law Enforcement and Fire
  - Interstate 4
  - Interstate 95
  - Interstate 75
  - State Road (SR) 408
  - SR 417
  - SR 528
  - SR 429
  - SR 414
- Will price Express Lanes
  - I-4 Ultimate
  - Beyond the Ultimate

RTMC Monitored Interstates



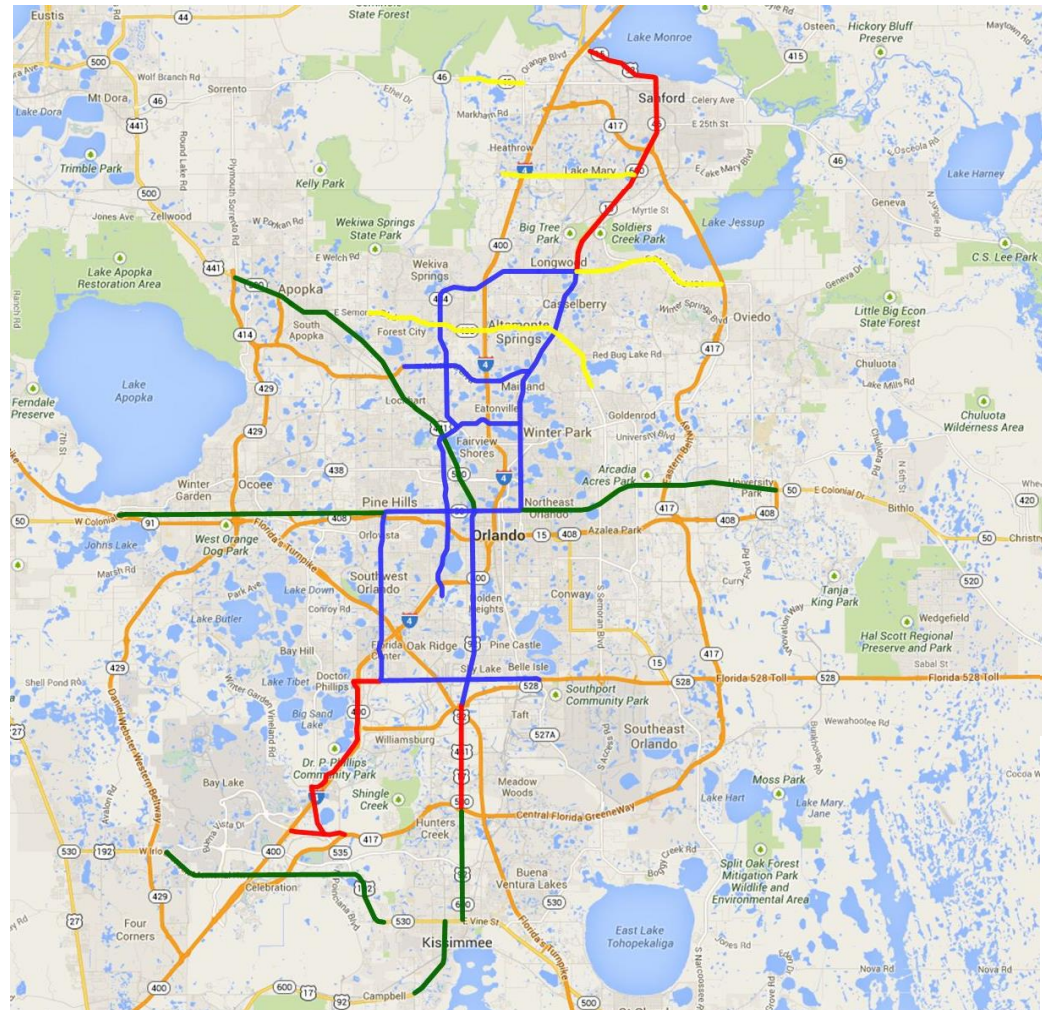
# Where does Transportation Management Center Effect?

## Regional Transportation Management Center (RTMC)

➤ Monitors and improves signal timing

- SR 46
- Lake Mary Boulevard
- US 17-92
- SR 434
- SR 436
- SR 414
- SR 423 (Lee Rd and JYP)
- US 441
- Kirkman Road
- Sandlake Road
- SR 535
- SR 536
- US 192

## RTMC Monitored Arterials



# Why Here and Why Now?

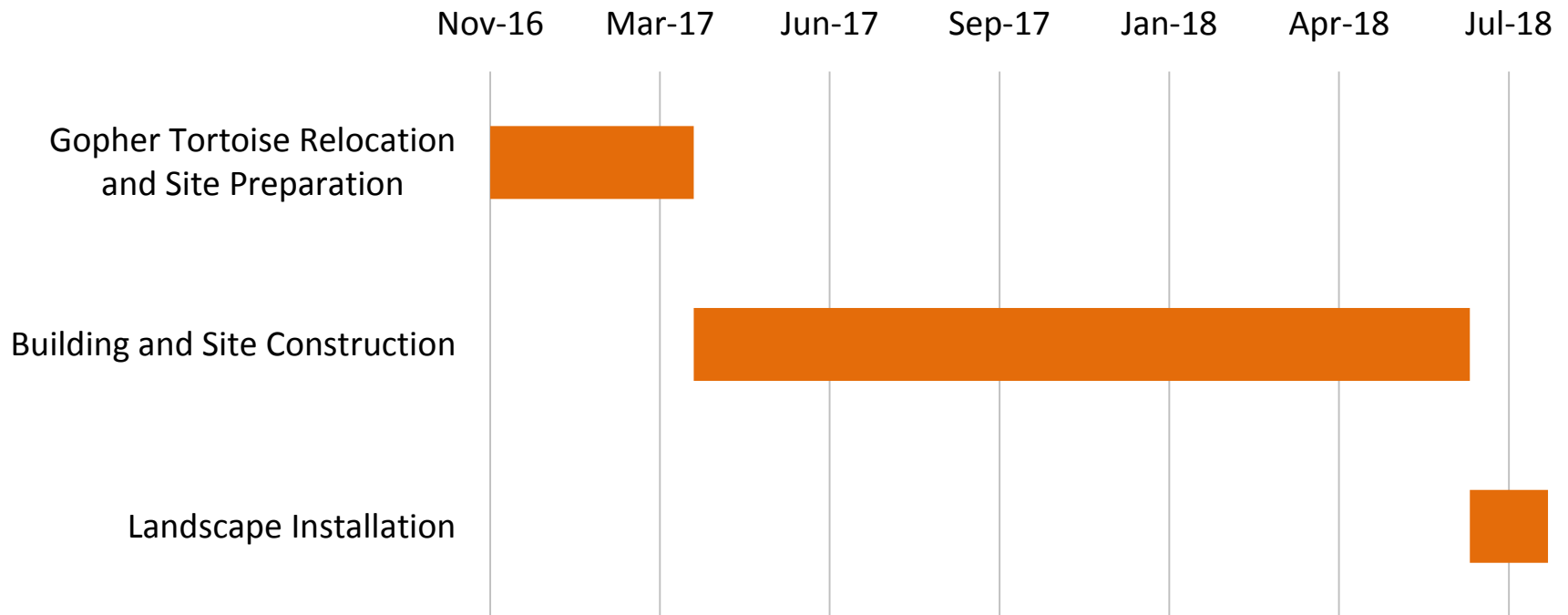


- Location
  - Provides access to interstate communications
  - Land already owned by Department, reducing cost
  - Fits within context of surrounding commercial areas
  - Lowest cost solution that delivers the function required for traffic management
  
- Timing
  - RTMC needed to control Express Lane pricing
  - Provides means enhance signal timing efforts



# Project Description

- Construction of a new state-of-the-art Regional Transportation Management Center (RTMC)
- Estimated Construction Cost: \$15.5 million





# What is not part of the RTMC?

- The RTMC is used for enforcement. It is used for traffic management
- RTMC includes FHP Dispatch but does not include the rest of Florida Highway Patrol Group. Officers will still be located at 133 S. Semoran Boulevard.
- Road Rangers will continue to use their shop for all maintenance and repairs off John Young Parkway
- The RTMC does not include a impound lot, armory, or other similar enforcement tools.



# Site Plan



# RTMC Building Eye Level View





# RTMC Building Aerial View





# THANK YOU FOR ATTENDING!

This presentation will begin again in a few moments



We'd like to thank everyone for attending this design public information meeting.

Project team members are here to address your questions. You also may submit questions or comments on the comment forms you received when you signed in.

We appreciate your feedback! There are surveys available for you to let us know how we're doing in terms of communicating with the public.

