

Public Information Meeting

State Road 46

From Mellonville Ave. to East of SR 415

Seminole County

Financial Project ID: 240216-2-52-01

April 20, 2016

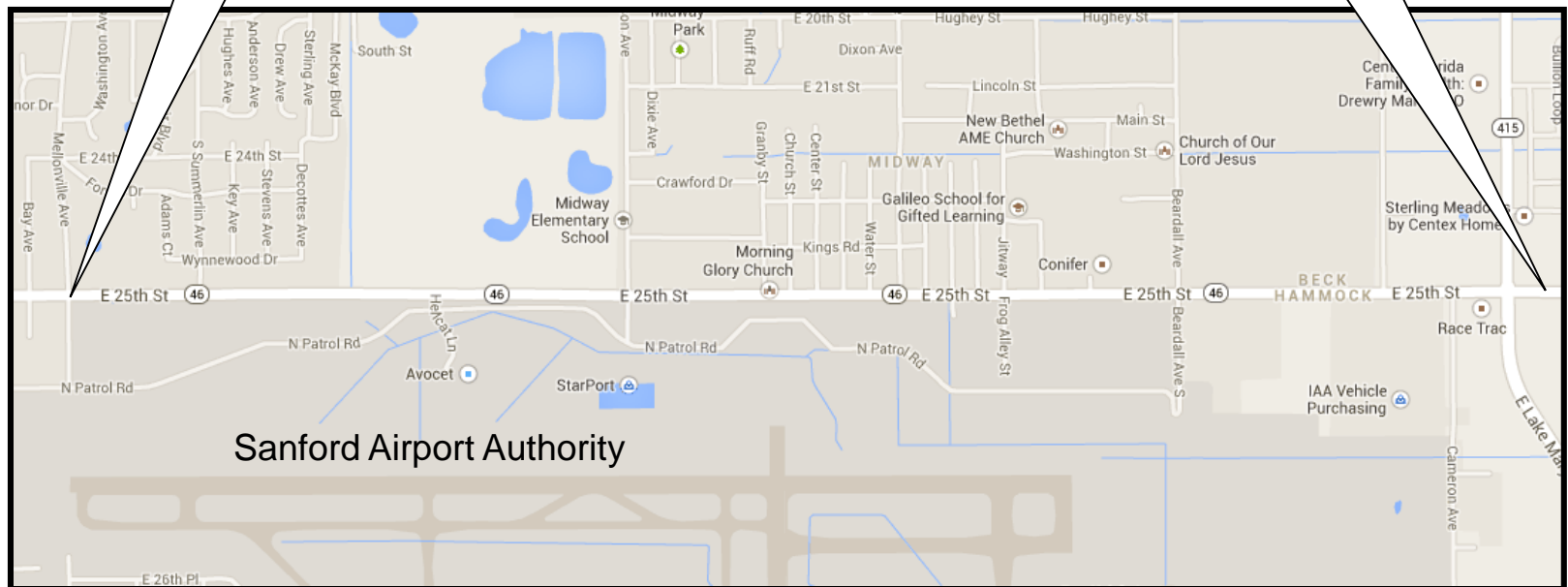
5:30 pm to 7:30 pm



Project Limits

**Begin Project:
Mellonville Ave.**

**End Project:
East of SR 415
(E. Lake Mary Blvd.)**



Project Objectives

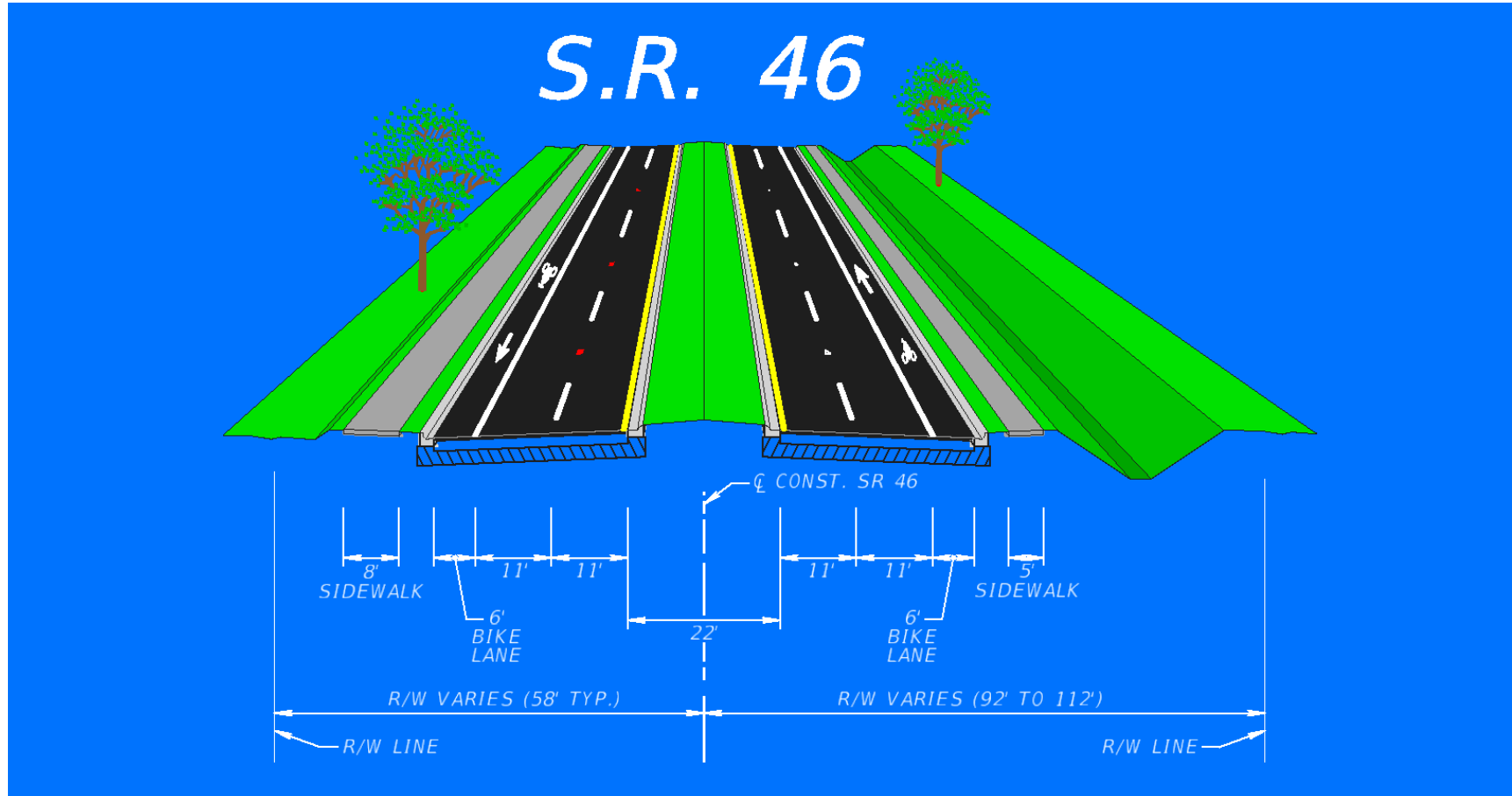
- **Improve Safety**
- **Meet Traffic Demands**
- **Increase Travel Mobility**
- **Decrease Congestion**
- **Improve Accessibility**

Proposed Improvements

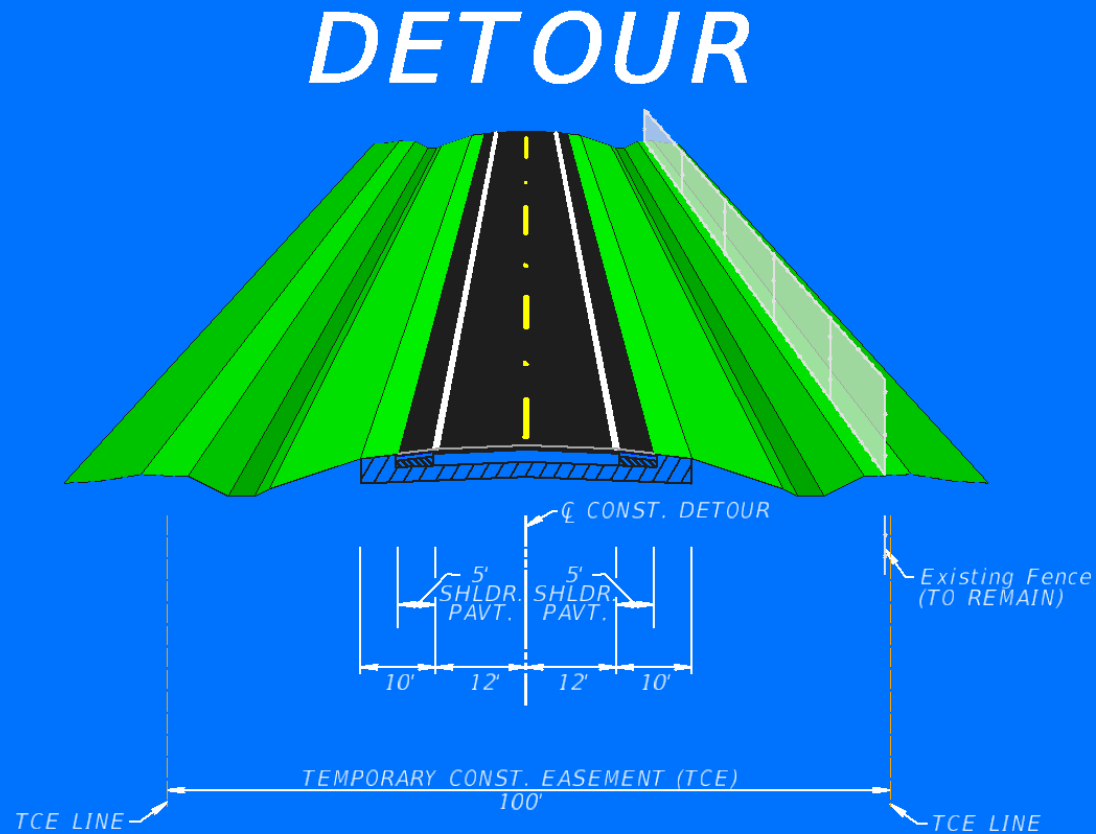
The project consists of reconstructing the existing two-lane roadway to a four-lane divided urban roadway with the following additional improvements:

- 6' Bike Lanes
- Curbs and Gutters
- 5' Sidewalk on south side
- 8' Sidewalk on north side
- 22' Raised Median
- Improved Drainage System

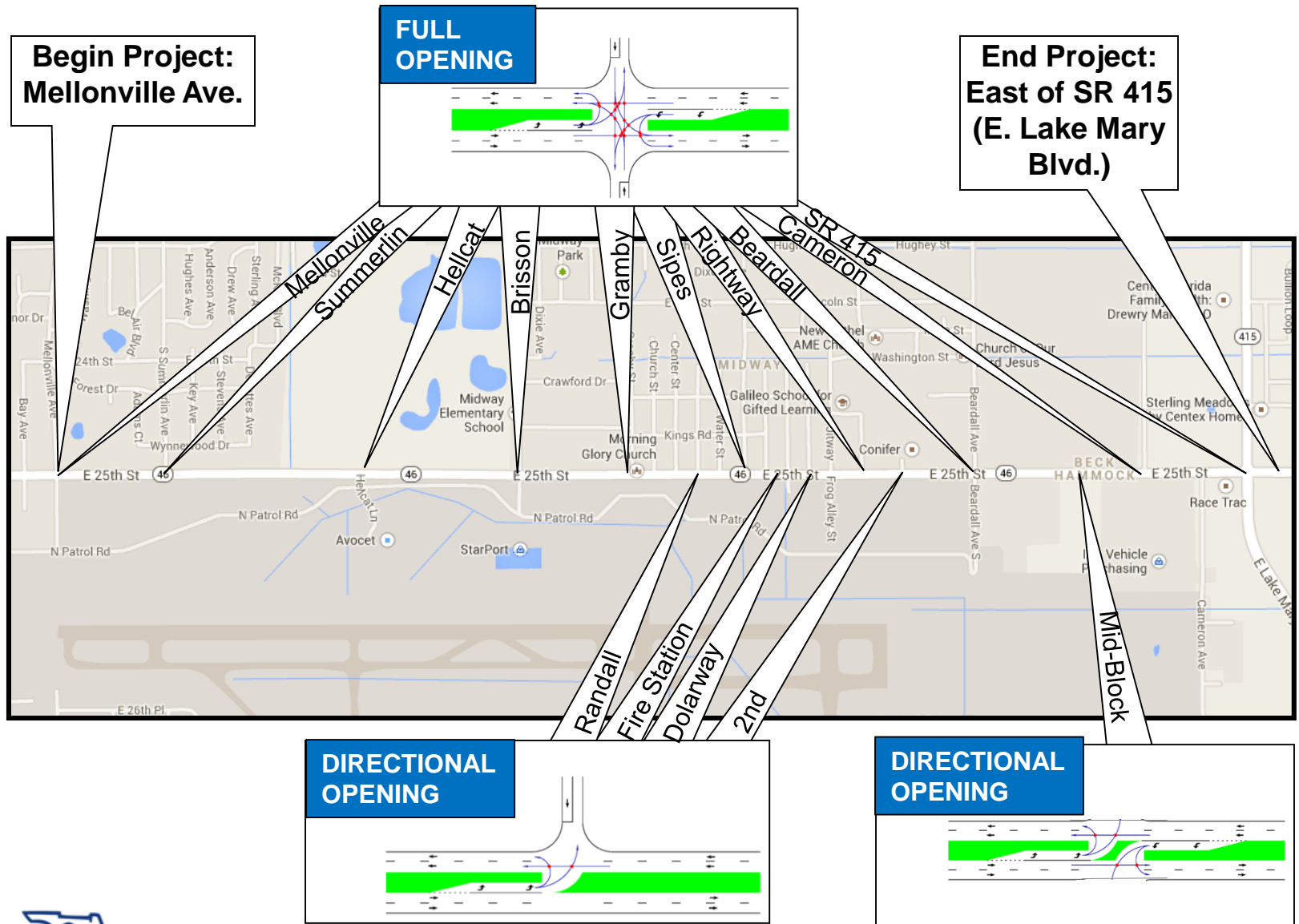
Typical Section



Typical Section



Proposed Median Openings



Access Management

What is Access Management ?

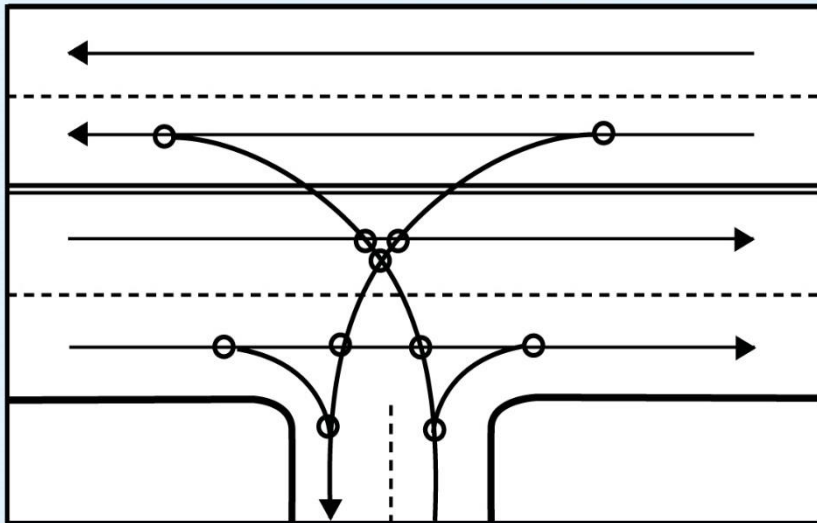
The careful planning of the location, design, and spacing of driveways, median openings, and street connections

How is Access Management Beneficial ?

- Increases Overall Public Safety
- Reduces the Number of Conflict Points
- Reduces the Number of Crashes
- Safely Allows for Greater Traffic Volumes

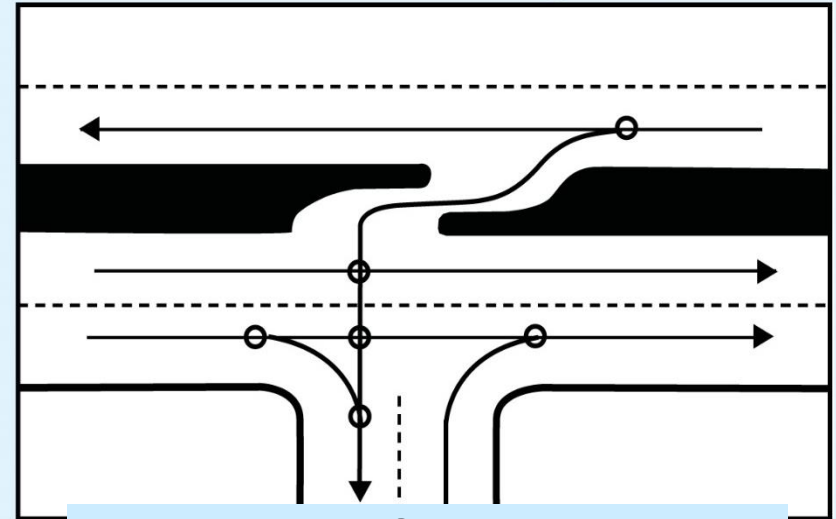
Access Management

Before Access Management



More Conflicts

After Access Management

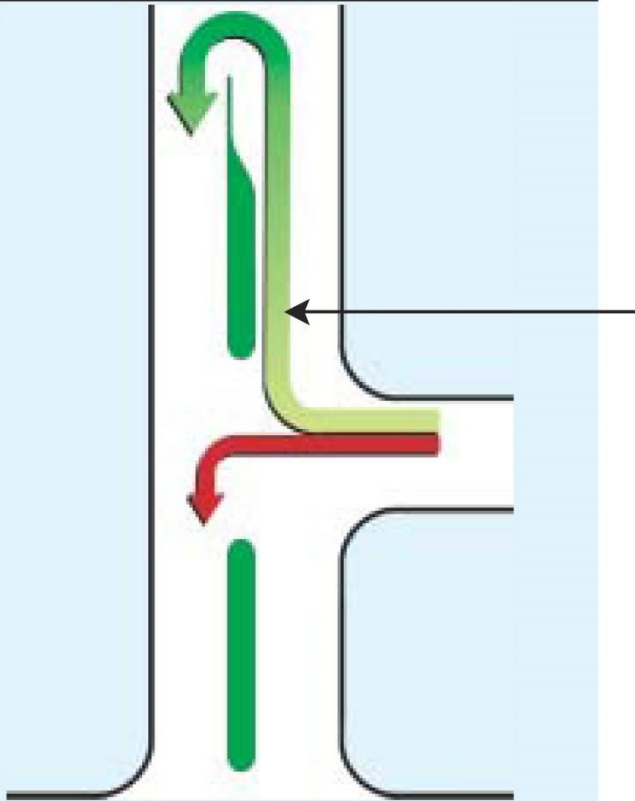


Less Conflicts

Conflict Points: Locations where a crash can occur

Access Management

A study in Orlando shows most customers do not find U-turns an inconvenience



Recent Studies Show U-Turns are Safer than Left Turns



John Lu, Ph.D., P.E. University of South Florida 2001

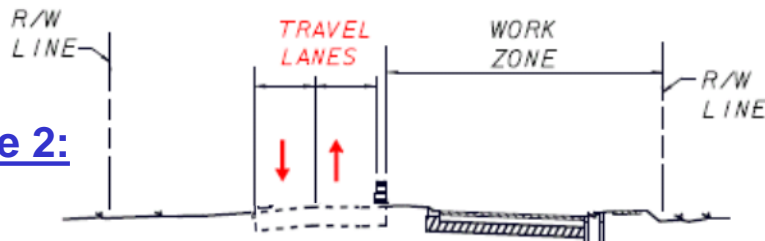
Temporary Traffic Control Plan

Phase 1:

Construct temporary detour around surcharge. Maintain traffic on existing lanes.

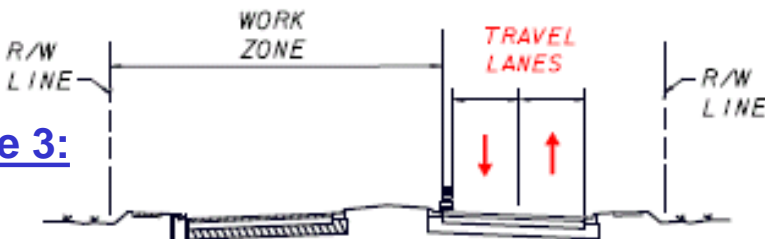
Phase 2:

Construct eastbound lanes. Maintain traffic on existing lanes.



Phase 3:

Construct westbound lanes. Maintain traffic on new eastbound lanes.



Phase 4:

Remove detour road connections to SR 46.

Phase 5:

Finalize construction of median.

Phase 6:

Install signs and apply pavement striping.

Project Schedule and Cost

Construction anticipated to begin: May 2016

Estimated Completion : Summer 2019

Estimated Construction Cost: \$26.4M



CFL Roads Website



Central Florida Roads
Florida Department of Transportation

[Contact](#)[F.A.Q.s](#)[Links](#)[Admin](#)[Home](#)[Lane Closures](#)[Under Construction](#)[Future Projects](#)[News](#)

Welcome to the Florida Department of Transportation District Five
State Roadway Projects Website

Project Finder

You can find road construction projects quickly by: Clicking a road shield below, selecting a road, city or county or by clicking a county on the map to the right



Current News

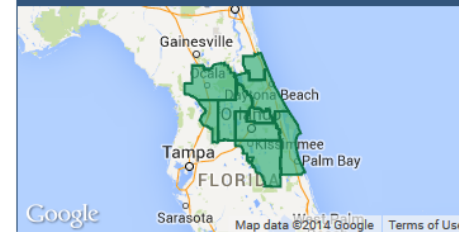


Nov 7 Weekly Interstate Report-Lane closures for week beginning: 11/09/14

Nov 7 Public Meeting- SR 436/Semoran Blvd. Corridor Planning Study

Nov 5 Public Information Meeting Notice- Pedestrian Improvements for US 92 (International Speedway Blvd.)

District 5 Service Area



Links

- [SunRail](#)
- [Florida's 511](#)
- [reThinkYourCommute.com](#)
- [D5 Work Program Public Hearings](#)
- [Public Meeting Notices](#)
- [Florida Highway Patrol](#)
- [FDOT Resources on CFGIS](#)

www.cflroads.com



Florida Department of Transportation
SR 46 – FPID 240216-2-52-01, From Mellonville Ave. to East of SR 415

Thank You

For Contact Information

FDOT Project Manager

Charles Long
FDOT Oviedo Construction
Email: charles.long@dot.state.fl.us
Office: (407)-482-7830
Cell: (407)-625-7591

Public Information Specialist

Alicia Arroyo
Quest Corporation of America
In-House FDOT Consultant
Email: Alicia.arroyo@dot.state.fl.us
Office: 407-482-7813
Cell: 407-509-0231

**The Florida Department of Transportation encourages
public participation and welcomes input**

**Please fill out a comment form and leave it with us tonight or mail to the address at
the bottom of the form**

