



SR 500 (US 192/441)

Aeronautical Drive to Budinger Avenue

Osceola County, Florida

Financial Management No.

FM 239682-1-52-01

Public Meeting – January 13, 2015

Presented by:

Storm Kazmierczak, P.E.

Florida Department of Transportation



Purpose of the Public Meeting

- To allow persons the opportunity to express their views relative to the proposed corridor improvements.

We encourage you to learn more about the project by reviewing maps, drawings, and other pertinent information developed by FDOT. Representatives from the project team are available to address any questions, comments, or concerns.



Civil Rights Statement

- The Florida Department of Transportation complies with various non-discrimination laws and regulations, including Title VI of the Civil Rights Act of 1964.
- Public participation is solicited without regard to race, color, national origin, age, sex, religion, disability or family status.
- Persons wishing to express their concerns relative to FDOT compliance with Title VI may do so by contacting either:

Florida Department of Transportation
District Five

Jennifer Smith

District Five Title VI Coordinator
719 South Woodland Boulevard
Deland, Florida 32720
386-943-5367

Jennifer.smith2@dot.state.fl.us

Florida Department of Transportation
Tallahassee Office

Jacqueline Paramore

State Title VI Coordinator
605 Suwannee Street, Mail Station 65
Tallahassee, FL 32399-0450
850-414-4753

Jacqueline.paramore@dot.state.fl.us



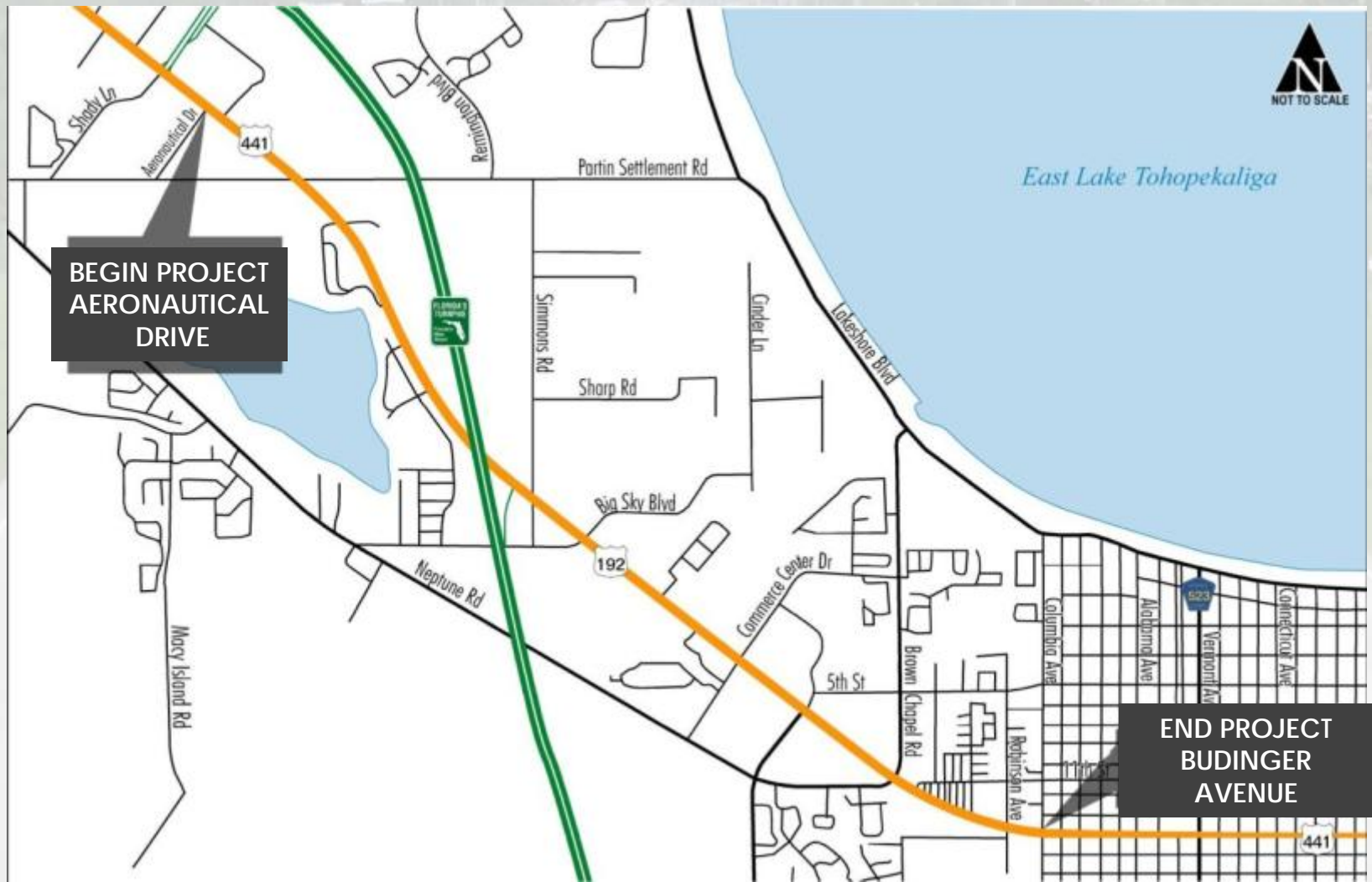
Project History

- PD&E Study from Aeronautical Drive to Holopaw Road (US 441)
- Public Private Partnership
 - Harmony Development Company
 - Florida Department of Transportation
 - Osceola County
- Approved by Federal Highway Administration - June 2008
- Preferred alternative recommended is a six lane high speed urban roadway. Design is nearly complete.



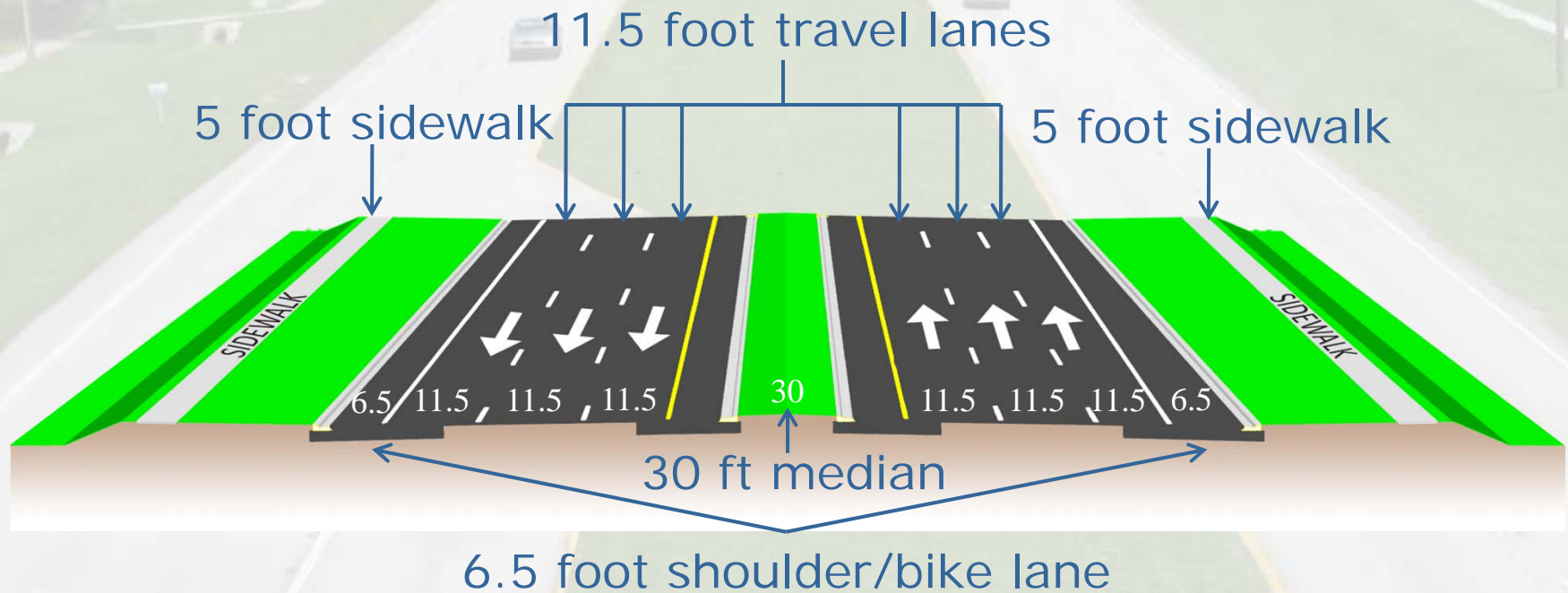


Project Location



Proposed Typical Section

- 6 Lane High Speed Urban
 - Curbed Inside and Outside Shoulders



Design Speed = 45-50 mph

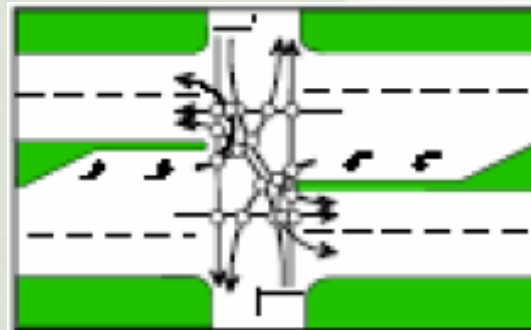
Access Classification/Modifications

■ Access Classification

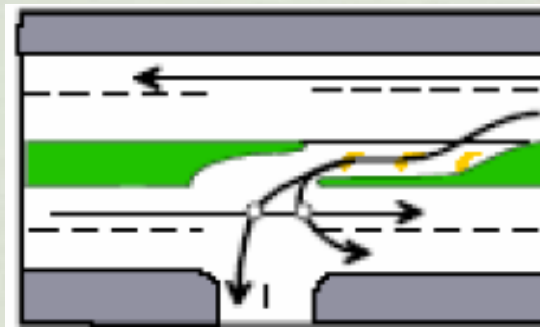
- Access Classification Class 5
- Full Median Opening spacing 2,640-ft minimum
- Directional Median Opening 660-ft minimum
- Maintain openings designed during PD&E to limit the number of conflicts along the roadway

■ Median Modifications

- Broadview Drive
- Parkway Commercial Center
- Emerald Drive
- Simmons Road
- Ames Haven Road
- St. Cloud Village Court
- Henry C. Yates Boulevard
- Home Depot
- Wal-Mart
- Blockbuster Shopping Plaza
- Westgate Shopping Center
- Arizona Avenue.



Full Median Opening
(18 Major Conflicts)



Directional Median
Opening
(2 Major Conflicts)

Intersection Improvements

■ Sidestreet Turn Lane Improvements

- Partin Settlement Road: Improvements within Right-of-Way will be designed and constructed with this project
- Old Canoe Creek Road: Improvements within Right-of-Way will be designed and constructed with this project

■ Traffic Signals

- Existing & Proposed
 - Academy Drive
 - Partin Settlement Road
 - Turnpike Off-Ramp
 - Commerce Center Drive
 - Old Canoe Creek Road
 - Neptune Road
 - Westgate Shopping Center
 - Budinger Ave.

Preferred Pond Locations

Pond 1

Pond Size – 2.73 AC





Preferred Pond Locations

Pond 2A & 2B

Pond Size – 3.72 AC





Preferred Pond Locations

Pond 3

Pond Size – 4.41 AC

Pond 4

Pond Size – 4.65 AC





Project Schedule

- Design Initiated – January 2009
- Design Complete – April 2015
- Right-of-Way Acquisition – Complete
- Construction – 2015 – \$32 million




Project Information

WWW.CFLROADS.COM

The screenshot shows the CFLRoads website interface. At the top left is the FDOT logo. To its right is the text "Central Florida Roads" and "Florida Department of Transportation". In the top right corner, there are navigation links: "Contact", "F.A.Q.s", "Links", and "Admin". Below these is a search bar labeled "Search CFLRoads...". A dropdown menu is open on the right side, listing various cities. The city "St Cloud" is highlighted with a red box, and a red arrow points from this box to the "City" dropdown menu in the "Project Finder" section. The "Project Finder" section has a dark blue header and contains the text: "You can find road construction projects quickly by: Clicking a road shield below, selecting a road, city or county or by clicking a county to the right". Below this text are several road shields: Interstate 4, Interstate 75, Interstate 95, State Road 1, State Road 441, State Road 50, Florida's Turnpike, and SunRail. At the bottom of the "Project Finder" section are three dropdown menus: "Road [Any Road]", "County [Any County]", and "City [Any City]". A blue "Search" button is located to the right of the "City" dropdown.



Project Information




Central Florida Roads
Florida Department of Transportation

[Contact](#) [F.A.Q.s](#) [Links](#) [Admin](#)

[Home](#) [Lane Closures](#) [Under Construction](#) [Future Projects](#) [News](#)

City of St Cloud Future Projects



Future Projects Design

- 239682-1 SR 500 (US 192) from Aeronautical Drive to Budinger Avenue**
- 239683-1 SR 500 (US 192) from Eastern Avenue to Nova Road

Public participation is solicited without regard to race, color, national origin, age, sex, religion, disability or family status. Persons with questions regarding nondiscrimination or Civil Rights, please contact the Civil Rights Officer listed under [Contact](#).

[Contact Us](#) [Employment](#) [MyFlorida.com](#) [Performance](#) [Statement of Agency](#) [Web Policies & Notices](#)



Project Information



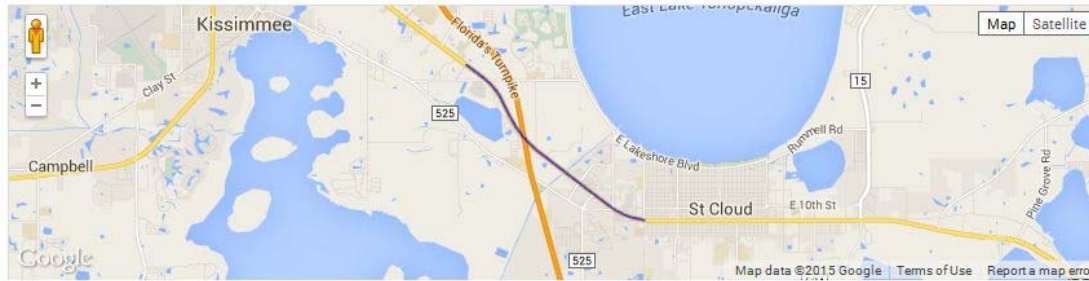
Contact F.A.Q.s Links Admin

Search CFLRoads...

Go

Home Lane Closures Under Construction Future Projects News

239682-1 SR 500 (US 192) from Aeronautical Drive to Budinger Avenue



About

This project pertains to the widening of SR 500 (US 192) from a 4-lane to a 6-lane roadway facility, drainage improvements, bike lanes, and sidewalks on both sides of the roadway.

Project Details

Phase: Design
Work Type: Widening
Length: 3.97Mi
City: St Cloud
County: Osceola
Road: US 192
Letting: 6/17/2015

Estimated Costs

Construction: \$32.0 Million

Contact Information

Project Manager: Storm Kazmierczak
(386) 943-5346
storm.kazmierczak@dot.state.fl.us
[Ask a Question](#)

Design Firm: Stantec



How Can You Comment

- Fill out a Comment Form and drop it in the Comment Box.
- Take a Comment Form with you and mail it to the address shown on the Comment Form.
- E-mail your comments to Storm.Kazmierczak@dot.state.fl.us
- Use the "Submit Comments and Questions" link on the CFLROADS project page.



Contacts



Storm Kazmierczak, P.E.

Project Manager

Florida Department of Transportation, District 5

719 S. Woodland Boulevard

DeLand, FL 32720

Tel: 386-943-5346

email: Storm.Kazmierczak@dot.state.fl.us



Stantec

Joseph O. Keezel, P.E.

Stantec, Roadway Engineer of Record

11315 Corporate Boulevard, Suite 105

Orlando, FL 32817

Tel: 407-823-8966

email: joe.keezel@stantec.com



**Thank you
for attending
tonight's meeting**