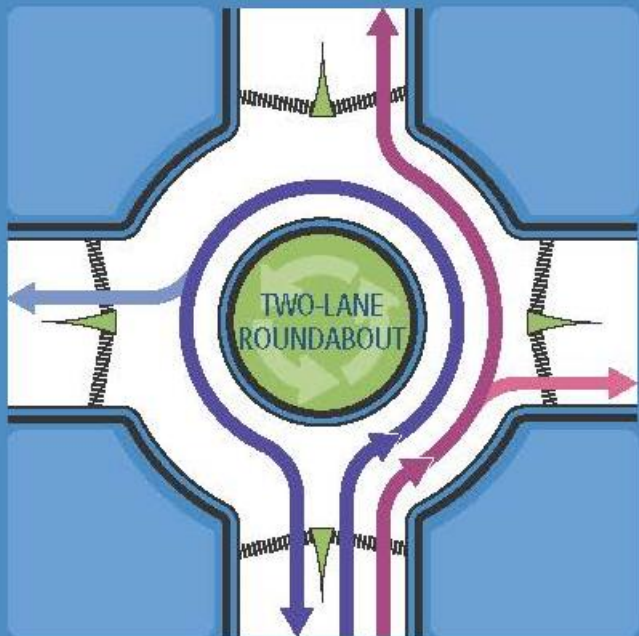
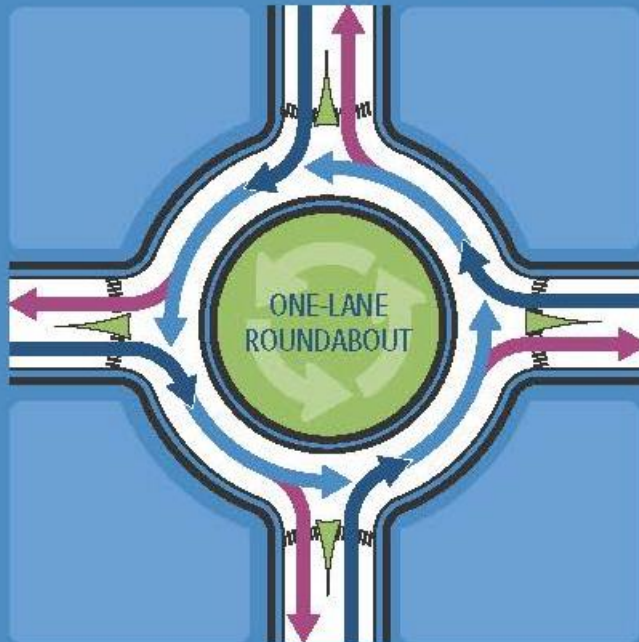


ROUNDBABOUTS

What?

A roundabout is a one-way, circular intersection that uses signs to guide motorists around them. They do not have traffic signals. Roundabouts have safe crossings for pedestrians and bicyclists.



Roundabout Rules of the Road

Slow down



Choose lane according to exit

Yield to traffic in roundabout



Do not pass in roundabout



Be alert for pedestrians and bicyclists



Allow emergency vehicles to pass



ROUNDABOUTS FICTION vs. FACT

@ FICTION

Roundabouts are unsafe

@ FACT

Roundabouts are safe. They have fewer and less severe crashes, 90% fewer deaths and 75% fewer injuries.

In roundabouts, drivers cannot run red lights or stop signs.

Roundabouts can be used in various intersection types.

@ FICTION

Roundabouts are dangerous for pedestrians and bicyclists

@ FACT

Roundabouts have up to 40% fewer incidents with pedestrians and cyclists.

@ FICTION

Roundabouts cause traffic delays

@ FACT

Roundabouts offer non-stop travel with no waiting at stop signs or traffic signals. Roundabouts accommodate up to 50% more traffic than typical intersections.

@ FICTION

Roundabouts are expensive

@ FACT

Roundabouts eliminate the cost of traffic signals and signal maintenance. During power outages, traffic still flows freely.

@ FICTION

Roundabouts are bad for business

@ FACT

Businesses near roundabouts have seen an increase in sales with more customers who can easily and safely drive, walk, or bike there.

They can also mark a business district or main street.

