

WOOTON PARK TRAILHEAD LEGEND

- M MAJOR CROSSING
- m MINOR CROSSING
- I INDUSTRIAL DRIVEWAY CROSSING
- P PRIVATE DRIVEWAY CROSSING
- C COMMERCIAL DRIVEWAY CROSSING
- + POTENTIAL SIGNALIZED CROSSING
- + MID-BLOCK CROSSING
- PUBLIC PARKS
- ALTERNATIVE A
- ALTERNATIVE B - RAILROAD ALIGNMENT
- EXISTING TRAIL
- PROPOSED TRAIL BY OTHERS
- PROPERTY LINE
- - - PROPOSED TRAIL R/W (ALT. B ONLY)

R/W ACQUISITION
PARCEL ID #
81926000100010000

WEKIVA TRAIL EXTENSION -
SEGMENT 5
FORMER TAV-DORA TRAIL
FPID 405859-1-12-07

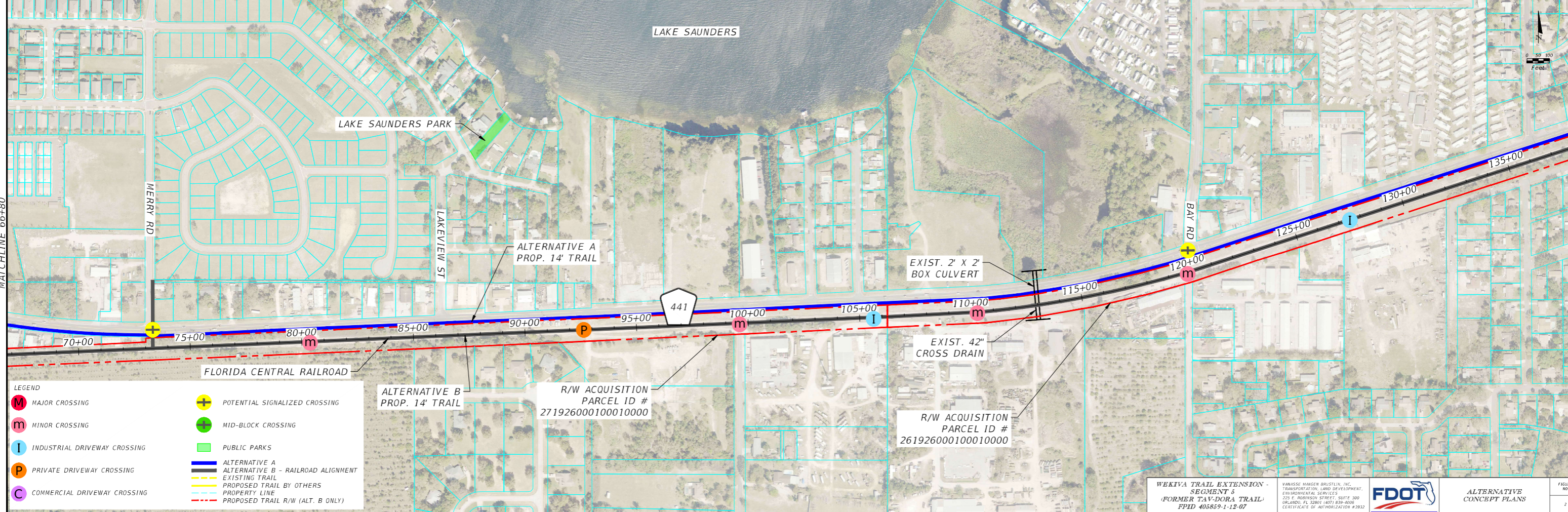
VARASSE HANSEN BRUSTLIN, INC.
TRANSPORTATION, LAND DEVELOPMENT,
ENVIRONMENTAL SERVICES
275 E. HARRISON STREET, SUITE 300
ORLANDO, FL 32801 | 407.839-4000
CERTIFICATE OF AUTHORIZATION #2932



ALTERNATIVE
CONCEPT PLANS

FIGURE
NO.
1

MATCHLINE 66+80



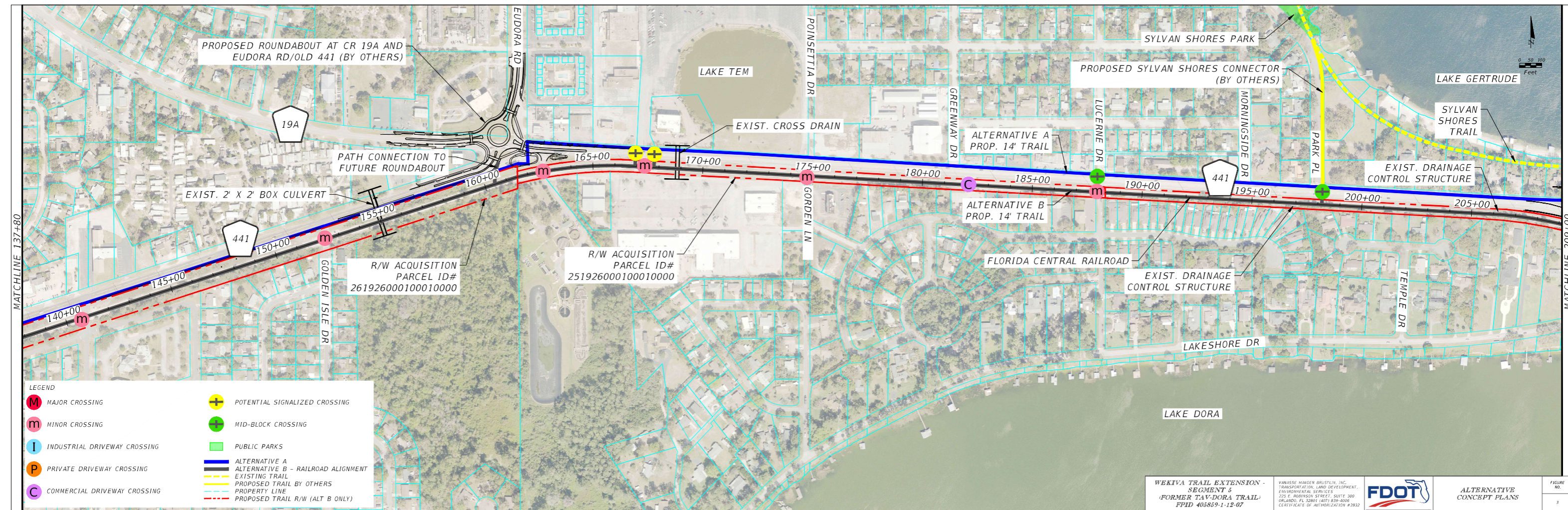
MATCHLINE 66+80

MATCHLINE 137+80

LEGEND

M MAJOR CROSSING	+ POTENTIAL SIGNALIZED CROSSING
m MINOR CROSSING	+ MID-BLOCK CROSSING
I INDUSTRIAL DRIVEWAY CROSSING	■ PUBLIC PARKS
P PRIVATE DRIVEWAY CROSSING	— ALTERNATIVE A - RAILROAD ALIGNMENT
C COMMERCIAL DRIVEWAY CROSSING	— EXISTING TRAIL
	— PROPOSED TRAIL BY OTHERS
	— PROPERTY LINE
	— PROPOSED TRAIL R/W (ALT. B ONLY)

<p>WEKIVA TRAIL EXTENSION - SEGMENT 5 FORMER TAV-DORA TRAIL FPID 405859-1-12-07</p>	<p>VARASSE HANSEN BRUSTLIN, INC. TRANSPORTATION, LAND DEVELOPMENT, ENVIRONMENTAL SERVICES 275 E. ROBINSON STREET, SUITE 300 ORLANDO, FL 32801 (407) 839-4000 CE-4119-PLATE OF AUTHORIZATION #2932</p>		<p>ALTERNATIVE CONCEPT PLANS</p>	<p>FIGURE NO. 2</p>
---	--	--	---	-------------------------



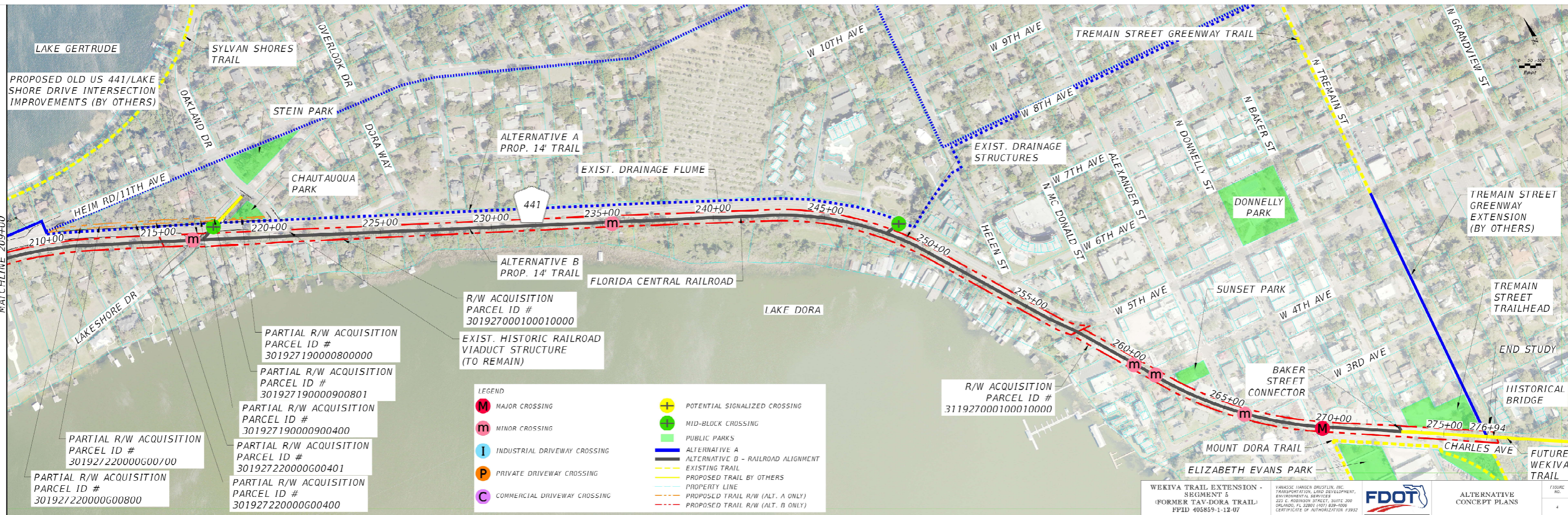
MATCHLINE 137+80

MATCHLINE 209+00

LEGEND

M MAJOR CROSSING	+ POTENTIAL SIGNALIZED CROSSING
m MINOR CROSSING	+ MID-BLOCK CROSSING
I INDUSTRIAL DRIVEWAY CROSSING	■ PUBLIC PARKS
P PRIVATE DRIVEWAY CROSSING	— ALTERNATIVE A
C COMMERCIAL DRIVEWAY CROSSING	— ALTERNATIVE B - RAILROAD ALIGNMENT
	— EXISTING TRAIL
	— PROPOSED TRAIL BY OTHERS
	— PROPERTY LINE
	- - - PROPOSED TRAIL R/W (ALT B ONLY)

<p>WEKIVA TRAIL EXTENSION - SEGMENT 5 FORMER TAV-DORA TRAIL FPID 405859-1-12-07</p>	<p>VANASSE HANGEN BRUSTLIN, INC. TRANSPORTATION, LAND DEVELOPMENT, ENVIRONMENTAL SERVICES 275 E. ROBINSON STREET, SUITE 300 ORLANDO, FL 32801 407.839.4000 CE-4119-PLATE OF AUTHORIZATION #2932</p>		<p>ALTERNATIVE CONCEPT PLANS</p>	<p>FIGURE NO. 3</p>
---	--	--	---	-------------------------



PROPOSED OLD US 441/LAKE SHORE DRIVE INTERSECTION IMPROVEMENTS (BY OTHERS)

MATCHLINE 209+00

- PARTIAL R/W ACQUISITION
PARCEL ID #
301927190000800000
- PARTIAL R/W ACQUISITION
PARCEL ID #
301927190000900801
- PARTIAL R/W ACQUISITION
PARCEL ID #
301927190000900400
- PARTIAL R/W ACQUISITION
PARCEL ID #
301927220000600700
- PARTIAL R/W ACQUISITION
PARCEL ID #
301927220000600401
- PARTIAL R/W ACQUISITION
PARCEL ID #
301927220000600800

- PARTIAL R/W ACQUISITION
PARCEL ID #
301927000100010000
- EXIST. HISTORIC RAILROAD VIADUCT STRUCTURE (TO REMAIN)
- PARTIAL R/W ACQUISITION
PARCEL ID #
311927000100010000

LEGEND

M	MAJOR CROSSING	+	POTENTIAL SIGNALIZED CROSSING
m	MINOR CROSSING	+	MID-BLOCK CROSSING
I	INDUSTRIAL DRIVEWAY CROSSING		PUBLIC PARKS
P	PRIVATE DRIVEWAY CROSSING		ALTERNATIVE A
C	COMMERCIAL DRIVEWAY CROSSING		ALTERNATIVE B - RAILROAD ALIGNMENT
			EXISTING TRAIL
			PROPOSED TRAIL BY OTHERS
			PROPERTY LINE
			PROPOSED TRAIL R/W (ALT. A ONLY)
			PROPOSED TRAIL R/W (ALT. B ONLY)

WEKIVA TRAIL EXTENSION - SEGMENT 5 (FORMER TAV-DORA TRAIL) FFD 405859-1-12-07

VARASSIS HANSEN DRUSTLIN, INC. TRANSPORTATION, LAND DEVELOPMENT, ENVIRONMENTAL SERVICES 222 S. ROBINSON STREET, SUITE 300 ORLANDO, FL 32801 (407) 839-1000 CERTIFICATE OF AUTHORIZATION #3992

FDOT

ALTERNATIVE CONCEPT PLANS

FIGURE NO. 4