

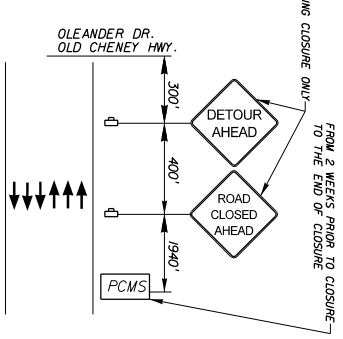
- DETOUR NOTES**
1. THIS DETOUR TO BE USED DURING CONSTRUCTION OF THE WESTBOUND SR 50 BRIDGE BEAMS. IT IS INTENDED TO CLEAR TRAFFIC FROM THE NORTH HALF OF THE INTERSECTIONS AND WESTBOUND RAMPS FOR CONSTRUCTION ACTIVITY.
  2. THIS DETOUR IS INDEPENDENT OF THE EASTBOUND SR 50 DETOUR.
  3. THIS DETOUR IS DESIGNED TO OCCUR AT THE END OF THE PHASE 3, DETOUR ALIGNMENTS AND CHANNELIZING DEVICES MATCH PHASE 3 EXCEPT WHERE NOTED.
  4. DETOUR AND LANE CLOSURES ARE SUBJECT TO LANE CLOSURE RESTRICTIONS, AS NOTED IN THE GENERAL NOTES. TRAFFIC MUST BE RETURNED TO PHASE 3 ALIGNMENT AND THE END OF EACH WORK PERIOD. DETOUR STRIPING MUST BE REMOVED/COVERED AT THE END OF EACH WORK PERIOD.
  5. THIS SHEET TO BE USED IN CONJUNCTION WITH THE WB DETOUR DETAIL SHEET (NEXT PAGE), WHICH PROVIDES ADDITIONAL STRIPING, BARRICADES, SIGNAGE, AND ALIGNMENT DETAIL.

**PCMS MESSAGE**

SR 436 CLOSED 09:50	SR 436 CLOSED 09:50	SR 436 CLOSED 09:50	SR 436 CLOSED 09:50
SR 436 TONIGHT	SR 436 TONIGHT	SR 436 TONIGHT	SR 436 TONIGHT
SR 436 DETOUR AHEAD	SR 436 DETOUR AHEAD	SR 436 DETOUR AHEAD	SR 436 DETOUR AHEAD

**DAY OF CLOSURE**

**DURING CLOSURE**



**GENERAL TCP SHEET 3**

DATE	DESCRIPTION	DATE	DESCRIPTION

<b>PBS&amp;J</b> Engineers of Record: William A. Terwilliger 489 South Keller Road Orlando, FL 32809 (407) 647-7215	<b>STATE OF FLORIDA</b> DEPARTMENT OF TRANSPORTATION COUNTY: ORANGE FINANCIAL PROJECT ID: 239203-2-52-01	<b>WB SR 50 BRIDGE DETOUR LAYOUT AND SIGNAGE PLAN</b>	SHEET NO. 603
--	---	---	---------------

DATE: 1/26/2006  
DRAWN BY: JAC/38/03/25/2006  
CHECKED BY: WAT/10/10/04/06

NOTICE: THE OFFICIAL RECORD OF THIS SHEET IS THE ELECTRONIC FILE SIGNED AND SEALED UNDER RULE 61G15-23.003, F.A.C.

