



PILE DRIVING

NOTICE

Update on the S.R. 50 Roadway
Construction Project

June 2008

FM No. 239203-2-52-01

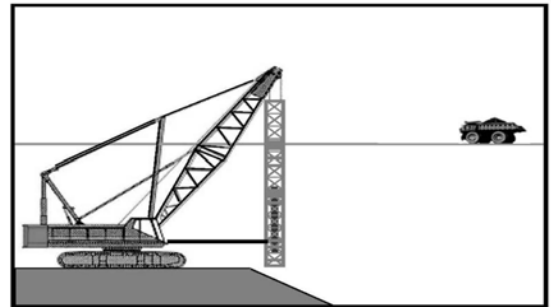
PILE DRIVING OPERATIONS TO BEGIN IN JULY 2008

The Florida Department of Transportation's (FDOT) contractor, LANE Construction Corporation, will begin constructing the foundations for the interchange at SR 50 and SR 436. The foundation work for the bridge structures located on the northwest and northeast corners of the SR 50/SR 436 intersection will include pile driving. This work will be performed between July 2008 and September 2008.

WHAT TO EXPECT DURING PILE DRIVING OPERATIONS

The construction of bridges and retaining walls often include driving piles for foundation support. Driven piles are typically constructed of wood, concrete, or steel.

This road construction project will use concrete piles. Concrete piles are driven into the ground by impact hammering.



Noise and vibrations associated with pile driving operations are inevitable. The Contractor will monitor vibration levels during pile driving activities.

WORK SCHEDULE

In an effort to minimize inconvenience to nearby residents, pile driving operations will take place between the hours of 7:00 a.m. and 7:00 p.m., Monday through Friday. Occasionally, pile driving operations may occur on Saturdays.

Please be advised weather and unforeseen circumstances may affect the construction schedule.

This work is part of the \$66 million construction project to widen SR 50 from west of SR 436 to SR 417. Please obey construction warning signs in the work area and be alert to workers near the roadway. FDOT appreciates your patience through this important project.

For additional information, contact Megan Olivera, Public Information Officer, at (407) 482-7813 or by email at megan.olivera@dot.state.fl.us