



FDOT District 5

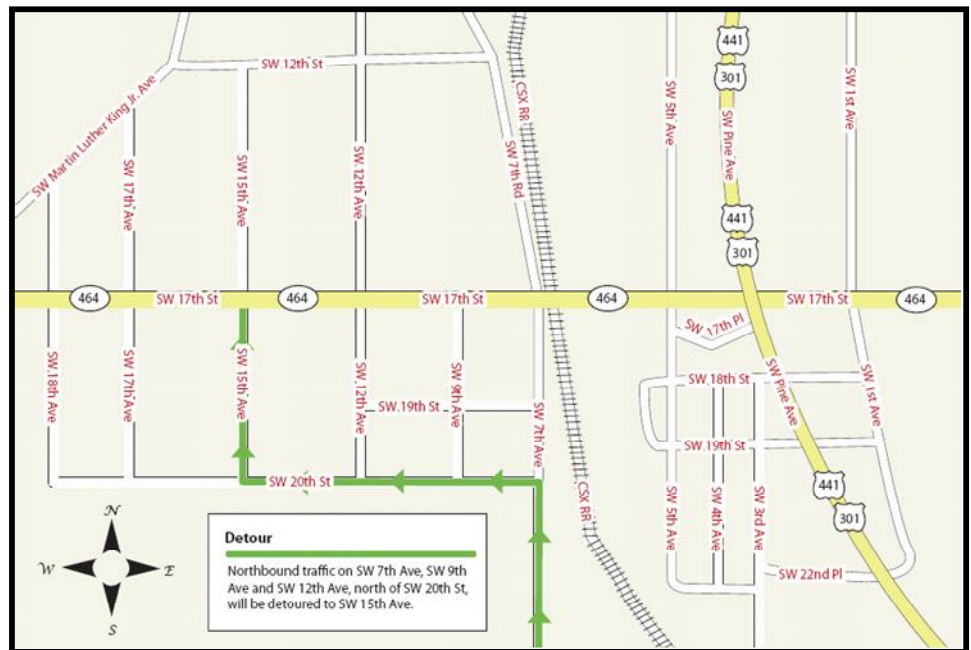
SR 464 Over CSX

Railroad Improvement Project

FIN NO. 411665-2-52-01

Detour to Occur August 18, 2008

- The Florida Department of Transportation's Contractor, Kiewit Southern Co. has scheduled a detour during the week of August 18 through August 22, 2008 as they work on setting the bridge's beams. Eastbound traffic and westbound traffic on SR 464 between SW 12th Avenue and Pine Avenue (US 27/US 301) will be reduced to one lane each direction. Northbound traffic on SW 7th Avenue, SW 9th Avenue and SW 12th Avenue, north of SW 20th Street will be detoured to SW 15th Avenue. Expect 20 minute delays. Motorist are encouraged to use an alternate route.



Please be advised that weather and unforeseen circumstances may affect the construction schedule.

Traffic Flow

This project includes a detailed Maintenance of Traffic (MOT) Plan that will maintain traffic flow through the construction zone. Although lane closures will be necessary at various times and locations in order for workers to complete this work safely, lane closures are restricted to non-peak hours, which are:

9 p.m.—6 a.m.

Access to residences and businesses will be maintained at all times. Should it be necessary to close a driveway to perform project-related work, project personnel will coordinate with the property owner in advance.

Speed Limits

The speed limits throughout the construction zone should be maintained as follows:

- Existing posted speed limits will remain in place.

Safety

Please use extreme caution and be alert when driving, walking, or biking around the construction area. Motorist should be alert for lane shifts or closures and for construction equipment/trucks entering and leaving the highway.

For more information, contact **Karen Kersey**, Public Information Officer, at (352) 427-4054 or by email at karen.kersey@dot.state.fl.us

For updated project information, check out the project website at <http://www.group97cei.com>