

Project Overview

The limits of the study area extend along SR 600 from west of Avenue "A" to County Road (CR) 535 (Ham Brown Road), a distance of 2.03 miles. A PD&E Study was previously completed and approved for this project and moved forward into the design phase. The current PD&E study is being performed to identify technical aspects of the proposed improvements where costs and impacts may be minimized. A State Environmental Impact Report (SEIR) will document the findings of the study.

Project Purpose & Need

The purpose and need is an important part of this project. There are three factors identified as vital to the successful completion of the project. These consist of traffic operations, traffic safety, and network connectivity. By 2036, SR 600 from Poinciana Boulevard to Ham Brown Road will experience significant delays with a level of service E, or failure. Improvements are needed to meet future traffic demands. As traffic congestion increases, the potential for crashes could increase. Improvements to reduce conflicts and enhance traffic flow should in turn reduce crash potential within the project area. This is also an important network connector in supporting the future SunRail station.

Public Hearing

We look forward to your continued participation. A Public Hearing, tentatively scheduled for August 2014, will provide additional opportunity for public comment. To be added to the mailing list, please contact the project manager.



Project Schedule

SEIR - Access Management Public Meeting	Design Begins	SEIR - Public Hearing	SEIR Approval	Construction Letting	Construction Complete
May 2014	June 2014	August 2014	October 2014	October 2016	Late 2018

CONTACT INFORMATION

PHONE	E-MAIL	MAIL	FAX
Lisa Lanman - Consultant Project Manager (407) 896-0594	llanman@drmp.com	Lisa Lanman DRMP, Inc. 941 Lake Baldwin Lane Orlando, Florida 32814	(407) 896-4836 Attn: Lisa Lanman
Mary McGehee - FDOT Project Manager (407) 474-8991 (386) 943-5063	Mary.McGehee@dot.state.fl.us		



State Road 600 (US 17-92) From Poinciana Boulevard to CR 535

Project Development & Environment (PD&E) Study



Financial Project Number: 239714-1-52-01

May 27, 2014

Tonight's Agenda

5:00 p.m. - Open House

5:30 p.m. - Presentation

6:00 p.m. - Open House

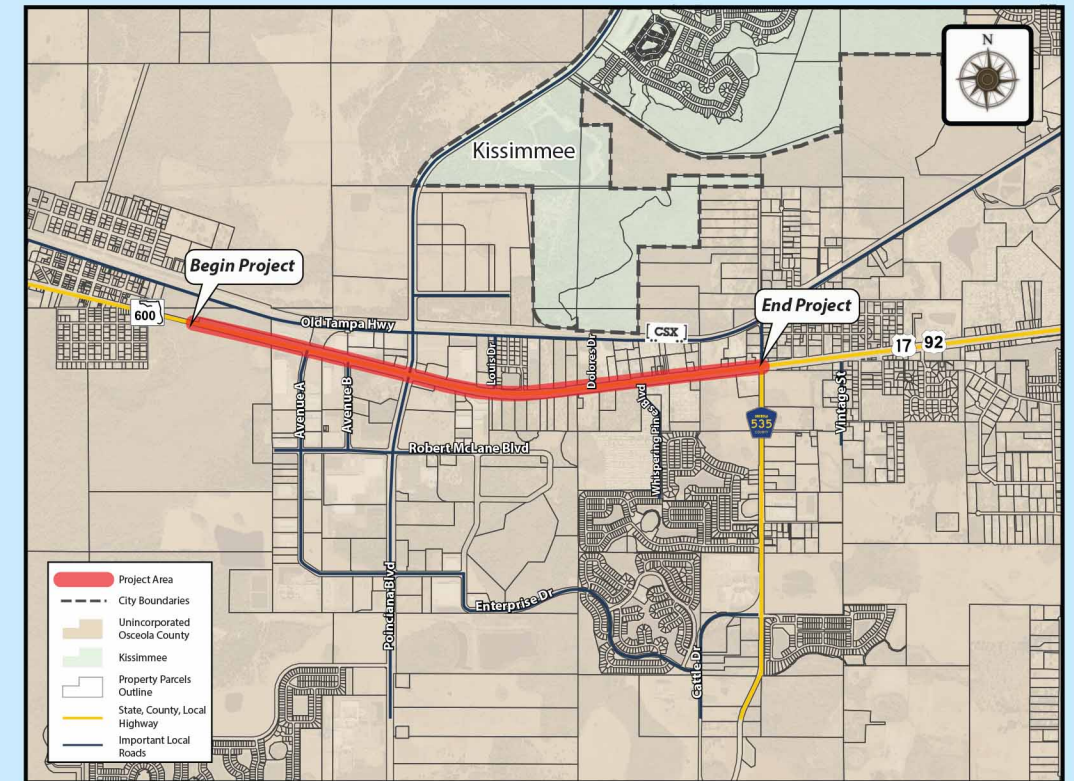
Contacts:

FDOT Project Manager:

Mary McGehee
719 S. Woodland Blvd.
DeLand, FL 32720
(386) 943-5063
Mary.McGehee@dot.state.fl.us

Consultant Project Manager:

Lisa Lanman, AICP
DRMP, Inc.
941 Lake Baldwin Lane
Orlando, FL 32814
(407) 896-0594
llanman@drmp.com



Welcome!

Welcome to the State Road 600 (US 17-92) PD&E Study Access Management Public Meeting! The Florida Department of Transportation (FDOT) is conducting this public meeting to present and explain the proposed access management concept and to obtain input from elected and appointed officials, property owners/tenants, business owners/operators, and other interested parties. A presentation, display boards, and other project information are on display here this evening. Project representatives are also available to discuss the project and answer any questions you may have.

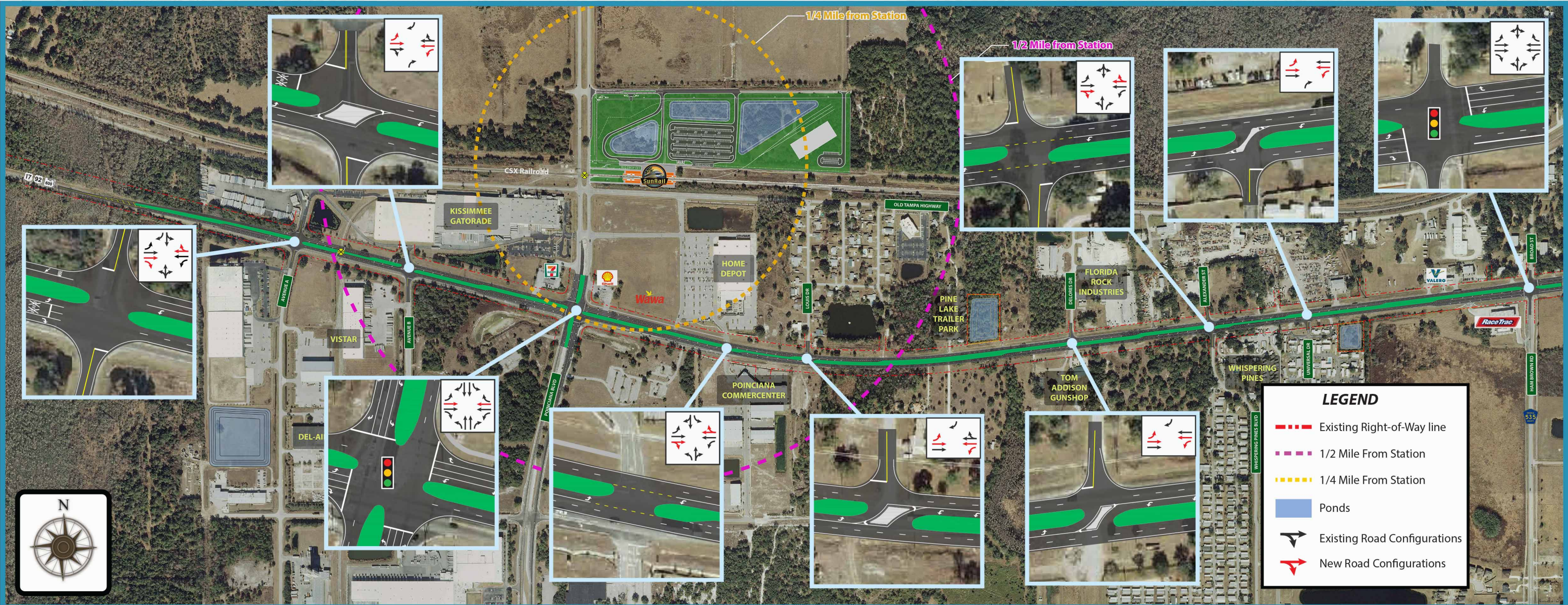
How Can I Get Involved?

Comment forms are available at this meeting for your use. Feel free to complete the comment form provided and drop it in one of the comment boxes, or if you prefer, you may mail your comments or written statements, postmarked by Saturday, June 7, 2014, to the address on the comment form. You can also submit your comments to the project manager through the email provided in this handout.

We strongly encourage public participation and welcome your comments and questions. The FDOT project manager, Mary McGehee can be reached at 386-943-5063 or by email to Mary.McGehee@dot.state.fl.us.



Please visit www.cflroads.com for the latest information and to be added to our mailing list. We invite you to check back regularly as the project website will be updated as additional information becomes available.



What is Access Management?

Access Management is the careful planning of the location, design, and operation of driveways, median openings, interchanges, and street connections.

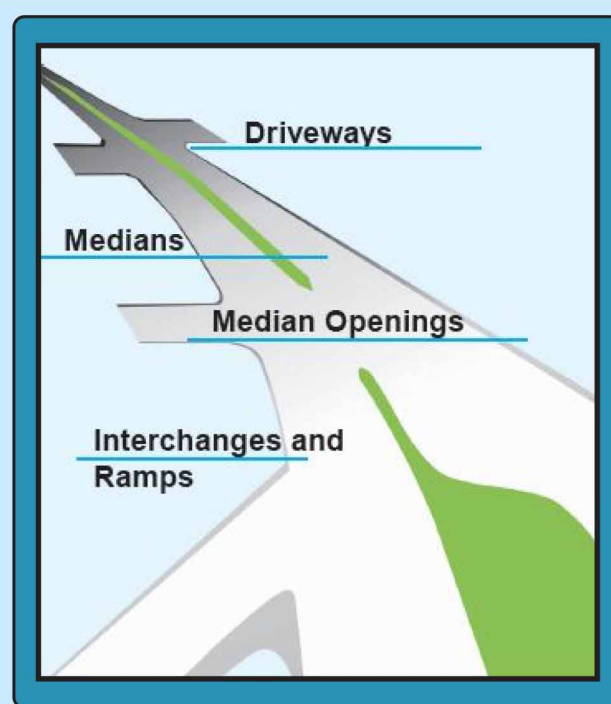
The purpose of access management is to provide access to land development in a manner that preserves the safety and efficiency of the transportation system.

One of the most important responsibilities of the Florida Department of Transportation (FDOT) is to ensure that the design of each state road properly balances access and mobility. Access management is used to provide this very important balance.

Does FDOT just think this stuff up?

No, the standards are based on over 40 years of experience and research.

The standards used by FDOT are thought to provide the optimal balance between access and mobility, and consider the characteristics of different types of roadways.



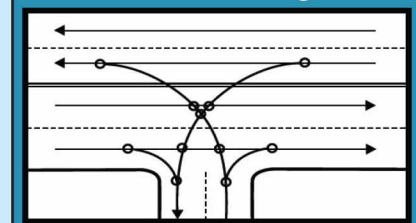
How does Access Management improve safety?

By Reducing Conflicts.

Conflict points are locations along a roadway where two vehicle's paths can legally cross. At a four way intersection there are as many as 36 conflict points. Each conflict point is a location where a crash can occur. A basic principle of access management is to limit the number of conflict points along a roadway by limiting the number of driveways and median openings and restricting certain movements at some median openings.

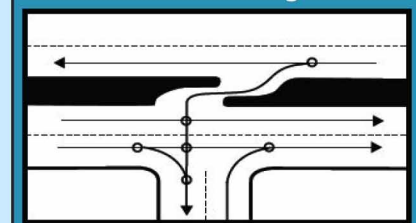
Good access management practice strives to separate conflict points by providing a reasonable distance between driveways and between median openings.

Before Access Management



More Conflicts

After Access Management



Less Conflicts

Access Management Reduces Crashes