



# SR 524 Corridor PLANNING STUDY

## Project Fact Sheet

The Florida Department of Transportation (FDOT) is conducting a corridor planning study for **State Road (SR) 524** from **Friday Road South, west of I-95, to Industry Road**.

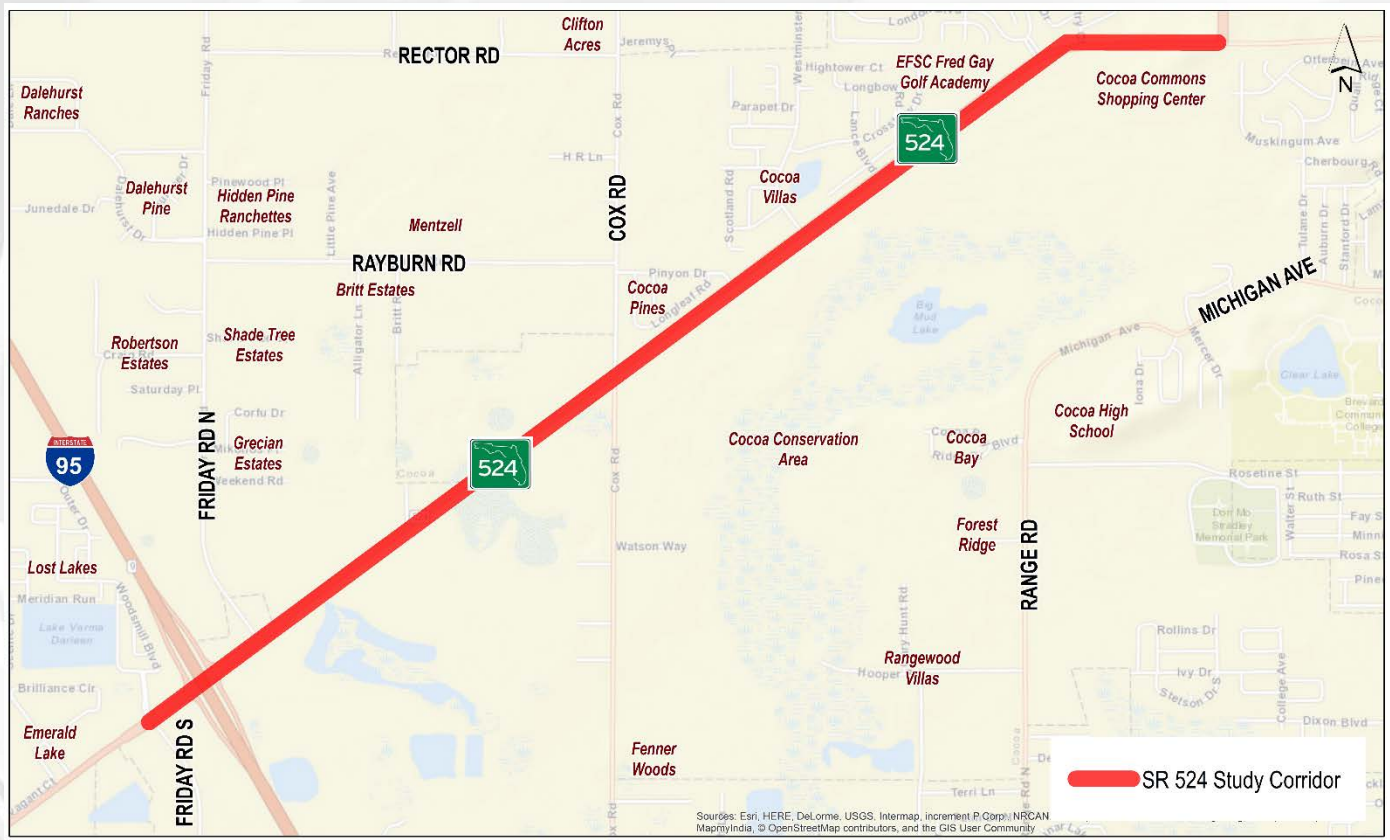


*The study will:*

Develop a future vision for the corridor that establishes a multi-modal approach

Develop potential solutions for the corridor that establish a more walkable urban environment

## Project Study Area



## Project Schedule

		2016											2017					
		Feb	Mar	Apr	May	Jun	Jul	Aug	Sep	Oct	Nov	Dec	Jan	Feb	Mar	Apr	May	Jun
<b>DEFINE THE PROBLEM</b>	Public Involvement Plan																	
	Public Meetings									★						★		
	PVT Meetings						●				●				●		●	
	PVT Stakeholder Interviews																	
	Existing Corridor Conditions Summary																	
<b>DEFINE GUIDING PRINCIPLES</b>	Purpose & Need Report																	
	Future Corridor Conditions Summary																	
<b>DEFINE AND SELECT ALTERNATIVES</b>	Conceptual Alternatives																	
	Conceptual Alternatives and Strategies Summary																	

## Corridor Information

SR 524 is a **critical traffic corridor** in the Space Coast region, connecting I-95, SR 520, SR 528, US 1, and Cape Canaveral.

The vast majority of the existing 3.1-mile corridor is a **two-lane undivided cross-section**. There are **limited pedestrian and bicycle facilities** and limited transit access.

Across the Study Area, the highest traffic volume occurs **between Cox Road and Industry Road** (15,300 Average Annual Daily Traffic in 2015).

From 2010 to 2014, there were 124 crashes in the Study Area - the overall average crash rate was greater than comparable roads statewide overall, and **more than triple** at the **I-95 interchange area**.

There are **7,666 residents** and **2,969 households** within one mile of the Corridor.

The vast majority (85 percent) of parcels in the Study Area are zoned **single-family residential**, followed by a **significant share of vacant parcels** (10 percent).



Please Visit the Project Website for more information

[http://www.cflroads.com/project/437983-1/SR\\_524\\_Corridor\\_Planning\\_Study](http://www.cflroads.com/project/437983-1/SR_524_Corridor_Planning_Study)

