

NE 36th Avenue Widening Design Project



WELCOME

Public Meeting on November 1, 2016

From State Road 492/NE 14th Street to NE 35th Street in Marion County

Heather Johnstone, P.E., FDOT Project Manager



Presentation Format



- **Overview**

- **Project Features**

- Segment 1 (NE 14th Street to NE 20th Place)
- Segment 2 (NE 20th Place to NE 25th Street)
- Segment 3 (NE 25th Street to NE 35th Street)

- **Share Your Comments**

- **Contact Information**

Overview



Title VI

This public meeting is being conducted without regard to race, color, national origin, age, sex, religion, disability or family status. Persons wishing to express their concerns relative to FDOT compliance with Title VI may do so by contacting:

District Five

Florida Department of Transportation
District 5 Title VI Coordinator
Jennifer Smith
719 South Woodland Boulevard
DeLand, FL 32720-6834
(386) 943-5367
Jennifer.Smith@dot.state.fl.us

Tallahassee Office

Florida Department of Transportation
Statewide Title VI Coordinator
Jacqueline Paramore
605 Suwannee Street, MS 65
Tallahassee, FL 32399-0450
(850) 414-4753
Jacqueline.Paramore@dot.state.fl.us

All inquiries or complaints will be handled according to FDOT procedures and in a prompt and courteous manner.

Overview



Project Limits

- **Segment 1:** SR 492 (NE 14th Street) to NE 20th Place
- **Segment 2:** NE 20th Place to NE 25th Street
- **Segment 3:** NE 25th Street to NE 35th Street



Overview



Project Features

- 1.5 miles in length
- City of Ocala street
- FDOT sponsored project



Overview



Presentation Format



Project Purpose

- Create a safer NE 36th Avenue corridor by widening the existing roadway to four lanes, adding buffered bicycle lanes, adding sidewalks, and addressing ADA requirements.



Presentation Format

Project Purpose

- Create a safer NE 36th Avenue corridor by widening the existing roadway to four lanes, adding buffered bicycle lanes, and adding sidewalks, and addressing ADA requirements.
- ***Bridge NE 36th Avenue over the existing CSX Railroad.***



Presentation Format



Project Purpose

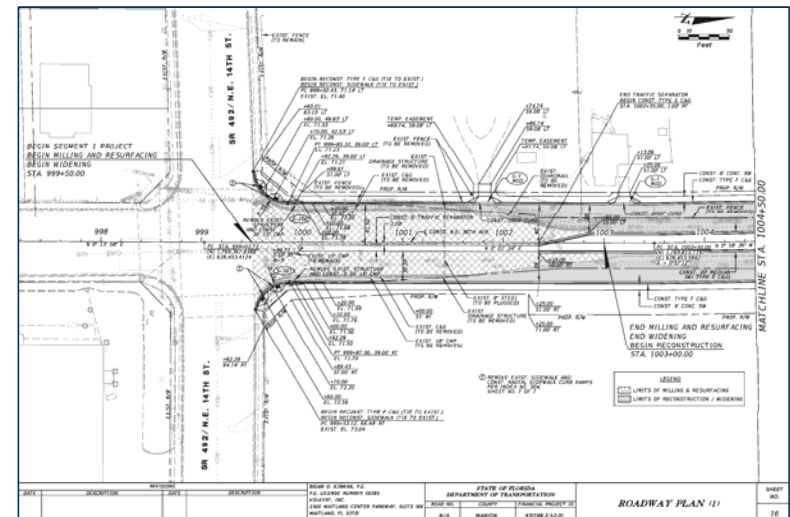
- Create a safer NE 36th Avenue corridor by widening the existing roadway to four lanes, adding buffered bicycle lanes, adding sidewalks, and addressing ADA requirements.
- Bridge NE 36th Avenue over the existing CSX Railroad.
- ***Improve drainage and signalization.***



Presentation Format

Project Purpose

- Create a safer NE 36th Avenue corridor by widening the existing roadway to four lanes, adding buffered bicycle lanes, and adding sidewalks. , and addressing ADA requirements.
- Bridge NE 36th Avenue over the existing CSX Railroad.
- Improve drainage and signalization.
- ***Prepare a set of construction documents that will be used to complete this project.***



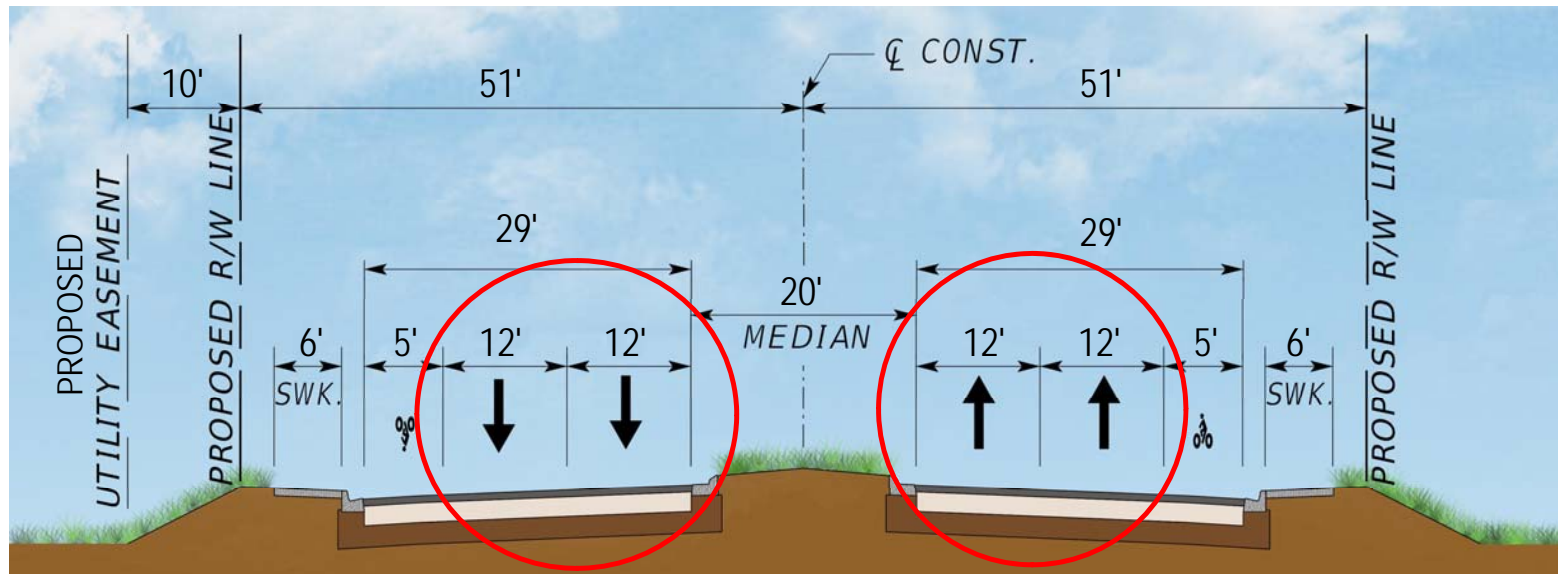
Project Features – Segment 1

SR 492 (NE 14th Street) to NE 20th Place



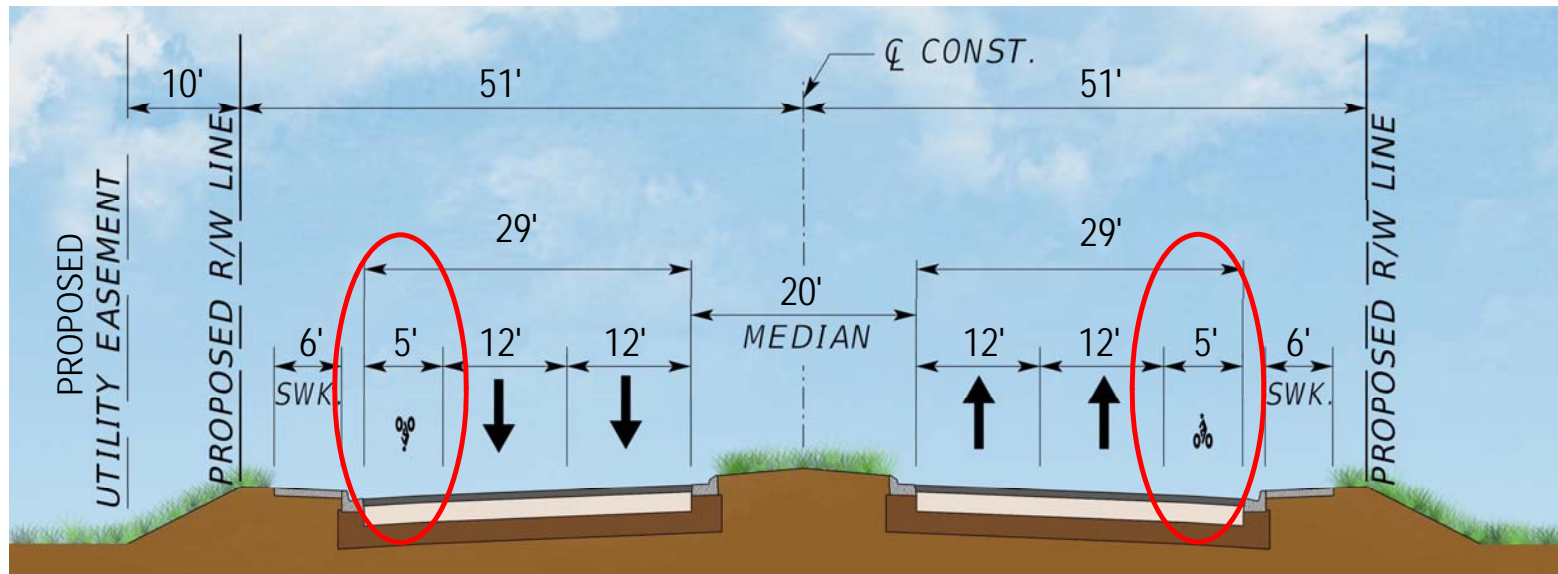
Project Features – Segment 1

Roadway Typical Section



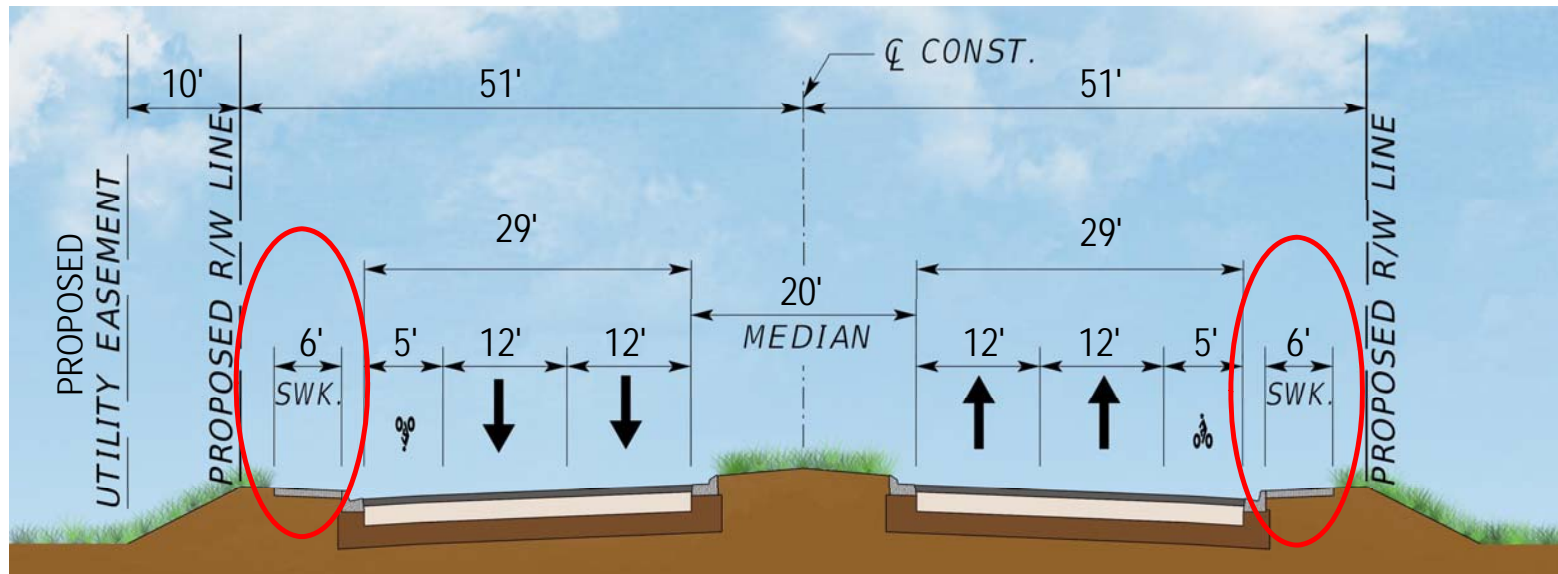
Project Features – Segment 1

Roadway Typical Section



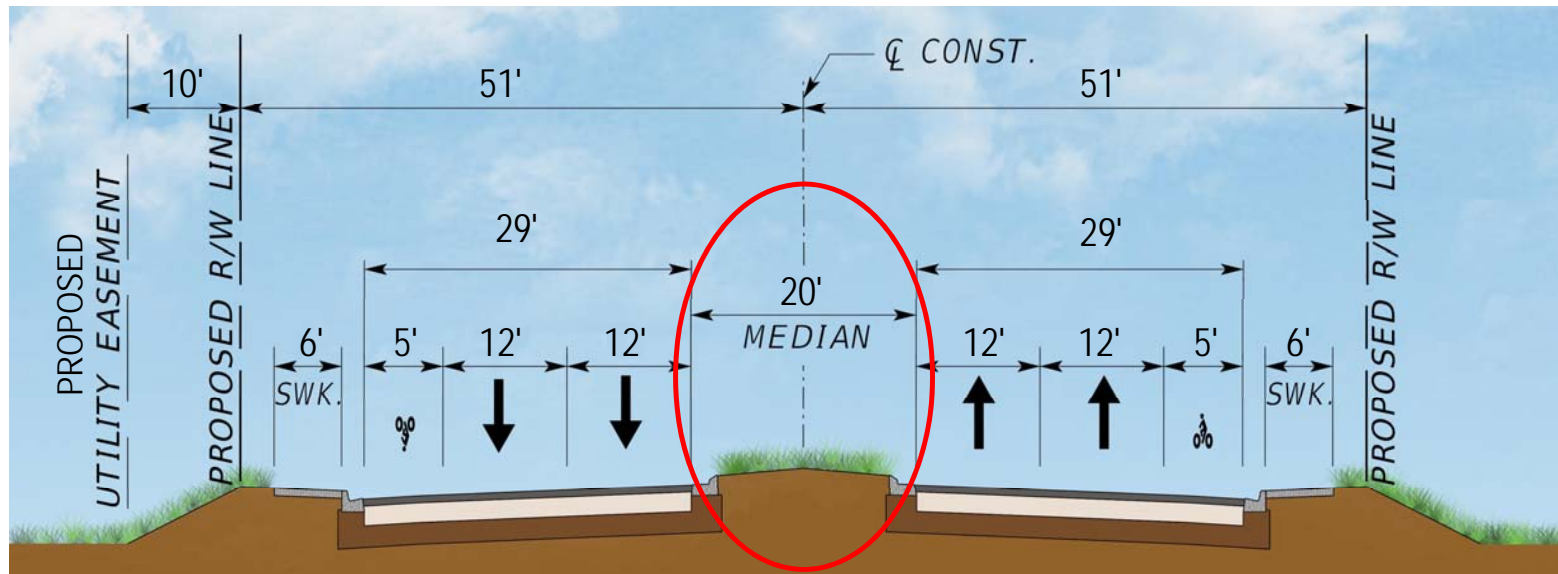
Project Features – Segment 1

Roadway Typical Section



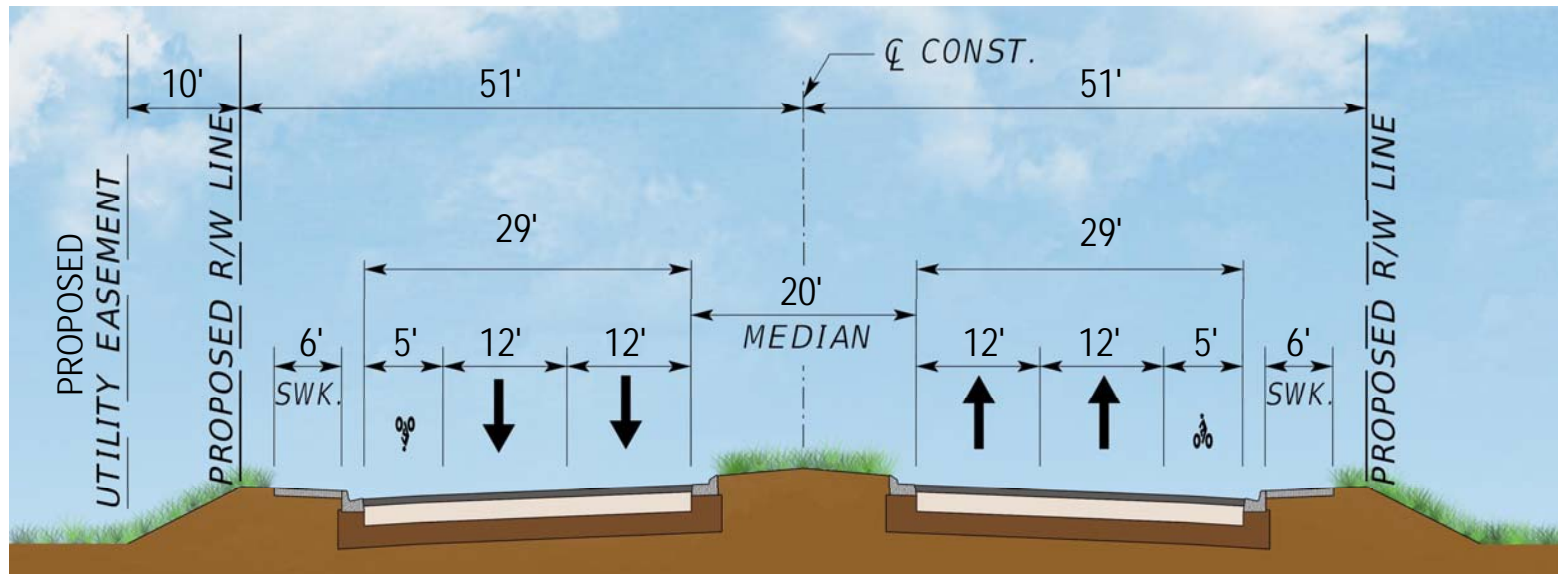
Project Features – Segment 1

Roadway Typical Section



Project Features – Segment 1

Roadway Typical Section



Project Features – Segment 1

Pond Location



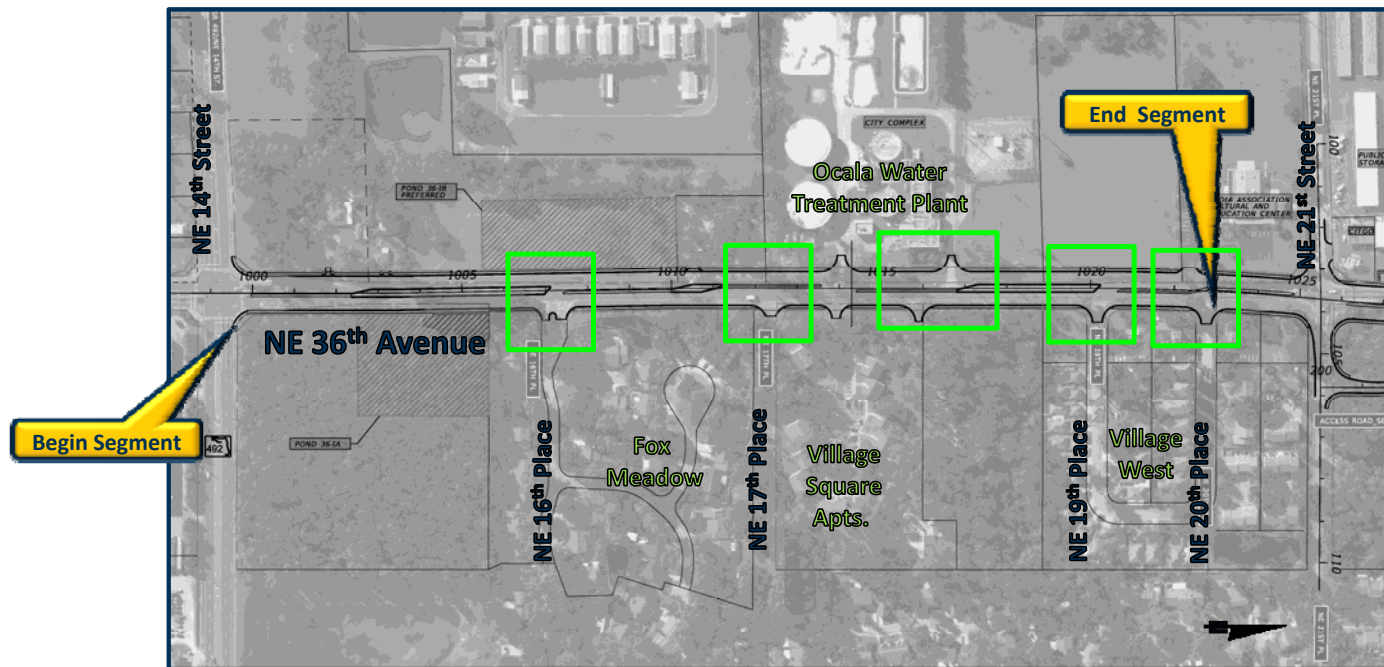
Project Features – Segment 1

Parcel Access



Project Features – Segment 1

Parcel Access



Project Features – Segment 1



Project Schedule

Task	Date
Design Started	August 28, 2015
Phase I Design Plans	March 11, 2016
Phase II Design Plans	August 2, 2016
Public Meeting	November 1, 2016
Phase III Design Plans	April 3, 2017
Final Plans	June 6, 2017

Right-of-way acquisition and construction are not funded.

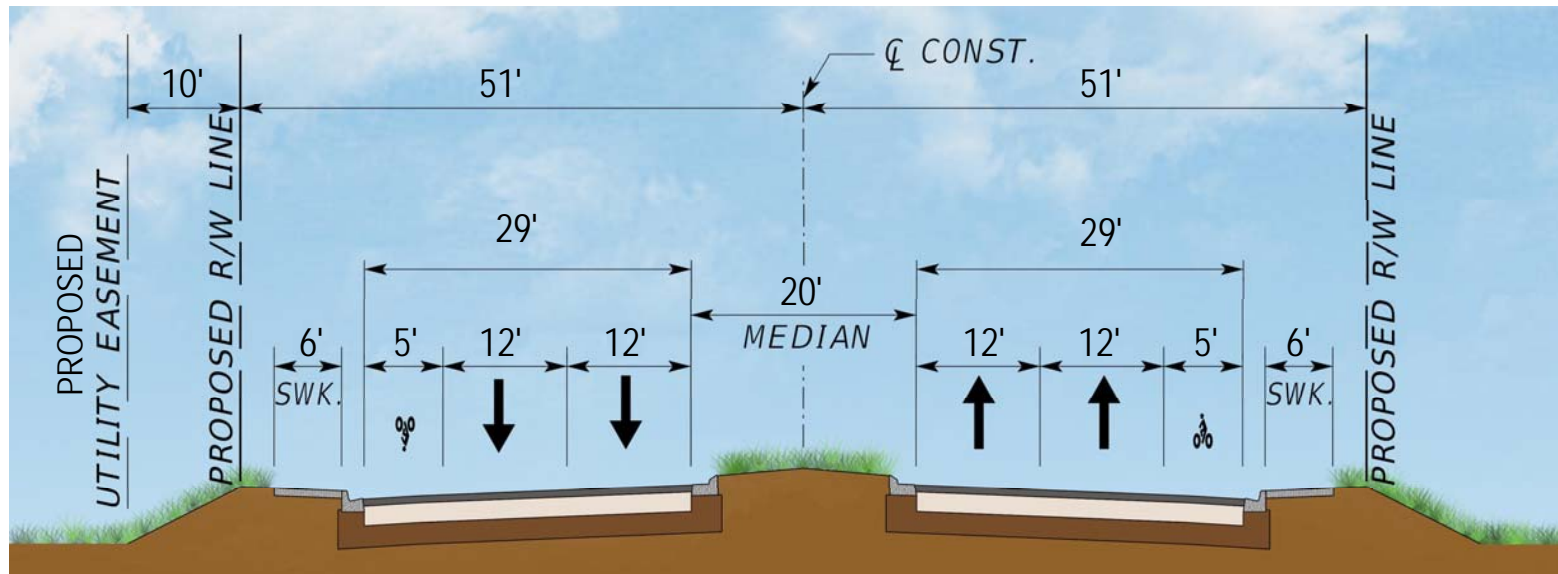
Project Update – Segment 2

NE 20th Place to NE 25th Street



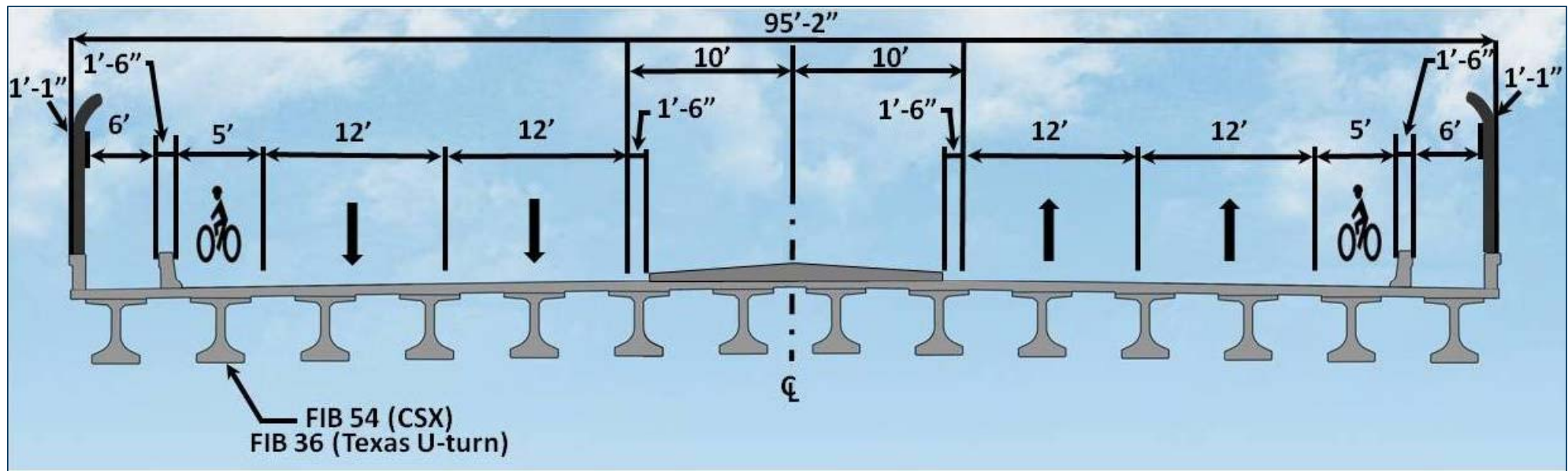
Project Features – Segment 2

Roadway Typical Section



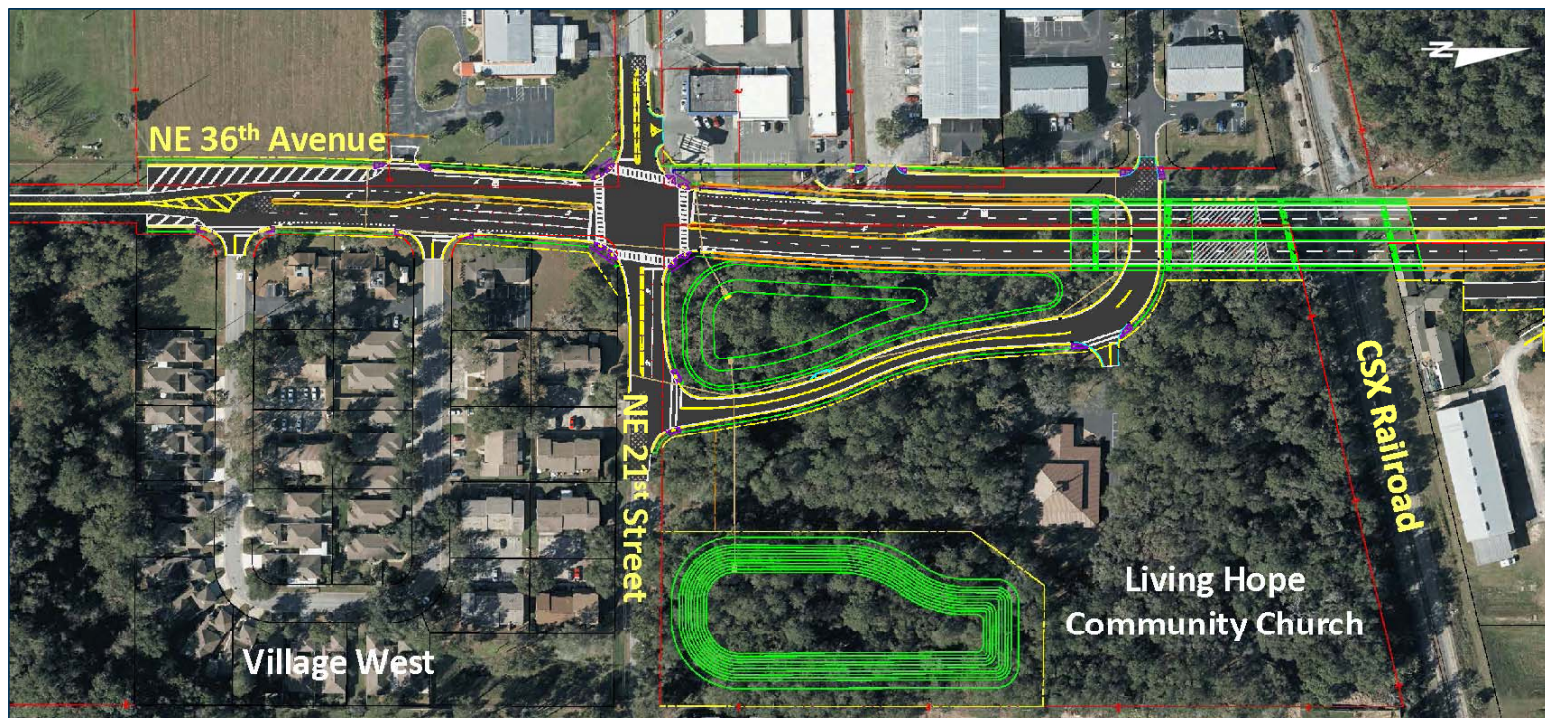
Project Features – Segment 2

Bridge Typical Section



Project Features – Segment 2

Texas U-Turn



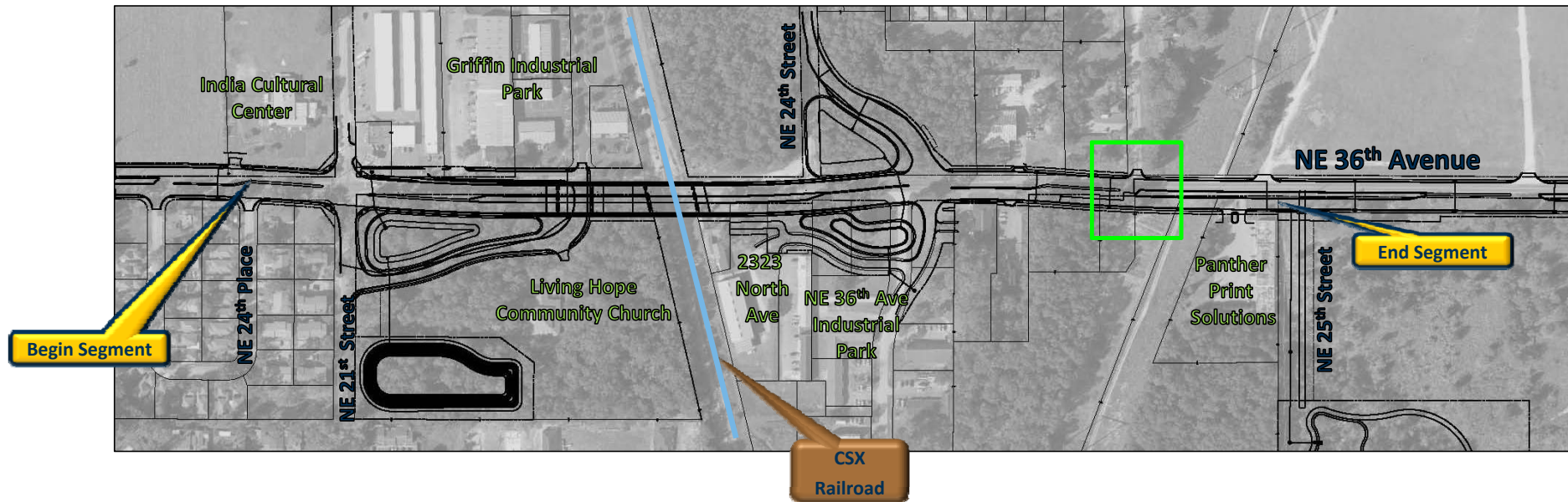
Project Features – Segment 2



NE 24th Street Realignment

Project Update – Segment 2

Parcel Access



Project Update – Segment 2

Pond Locations



Project Features – Segment 2



Project Schedule

Task	Date
Design Started	August 28, 2015
Phase I Design Plans	March 11, 2016
Phase II Design Plans	August 2, 2016
Public Meeting	November 1, 2016
Phase III Design Plans	April 3, 2017
Final Plans	June 6, 2017
Segment 2 - Letting Date	May 7, 2019
Segment 2 - Two years for R/W Acquisition	

Right-of-way acquisition and construction are funded.

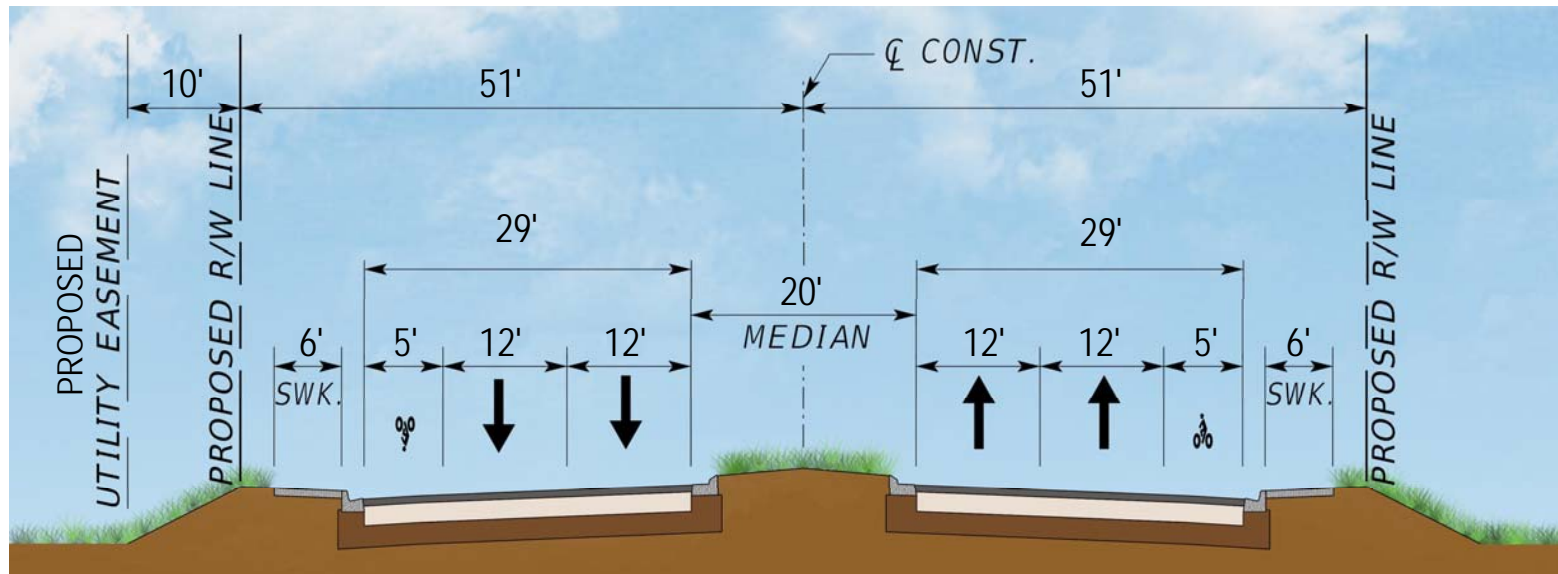
Project Features – Segment 3

NE 25th Street to NE 35th Street



Project Features – Segment 3

Roadway Typical Section



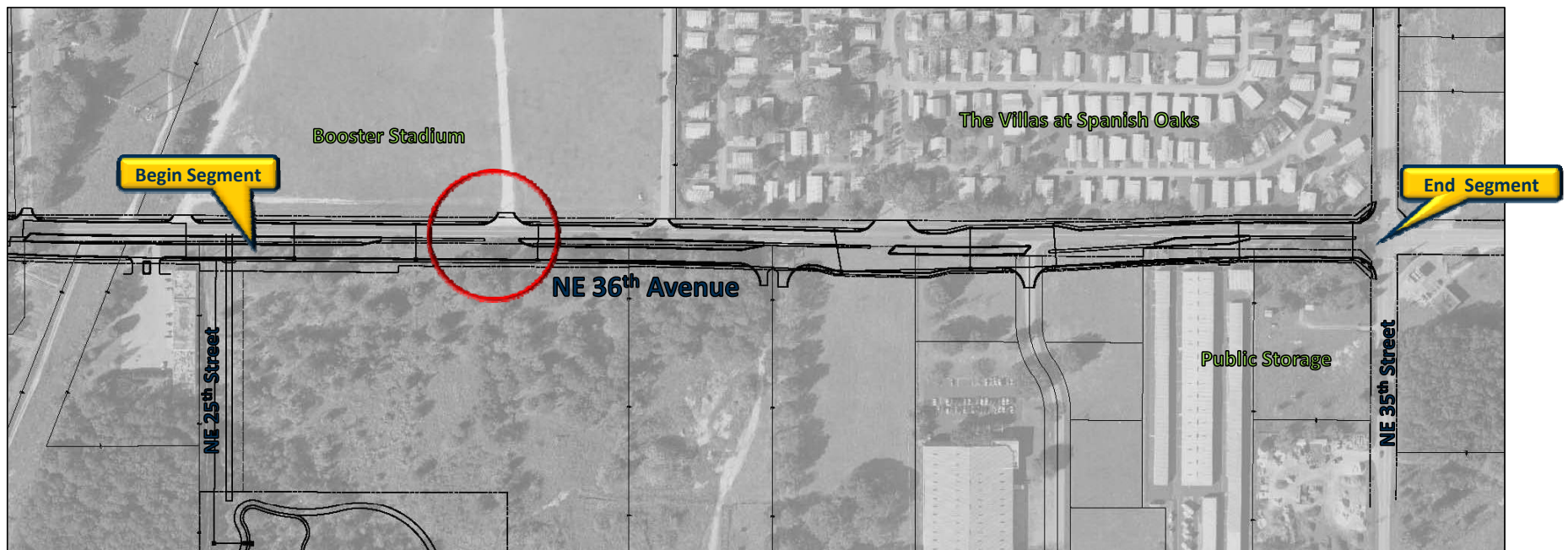
Project Features – Segment 3

Pond Location



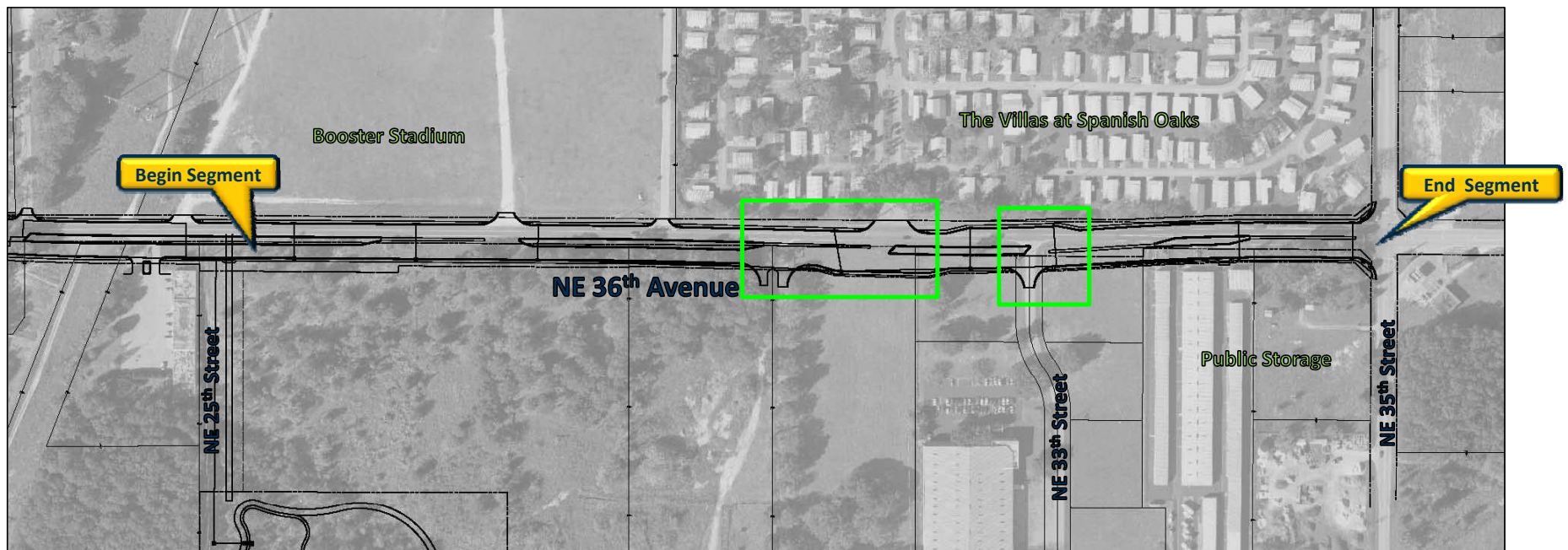
Project Features – Segment 3

Parcel Access



Project Features – Segment 3

Parcel Access



Project Features – Segment 3



Project Schedule

Task	Date
Design Started	August 28, 2015
Phase I Design Plans	March 11, 2016
Phase II Design Plans	August 2, 2016
Public Meeting	November 1, 2016
Phase III Design Plans	April 3, 2017
Final Plans	June 6, 2017

Right-of-way acquisition and construction are not funded.

Agency Coordination



Interactive Meetings

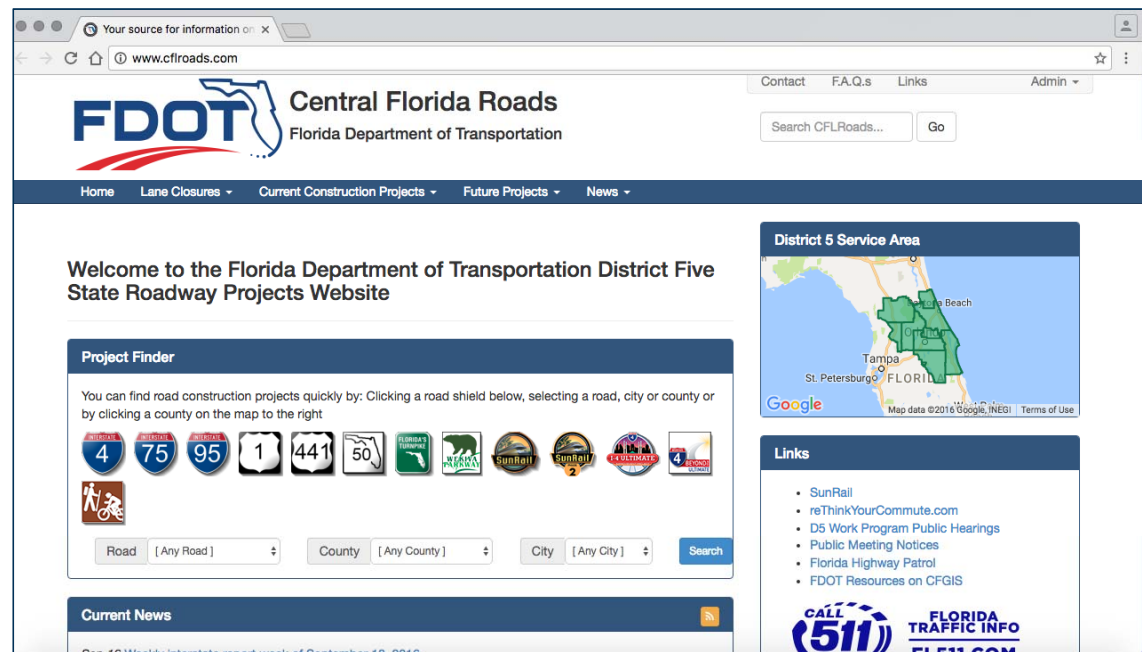
- March 15, 2016
- August 31, 2016



Project Features



www.cflroads.com

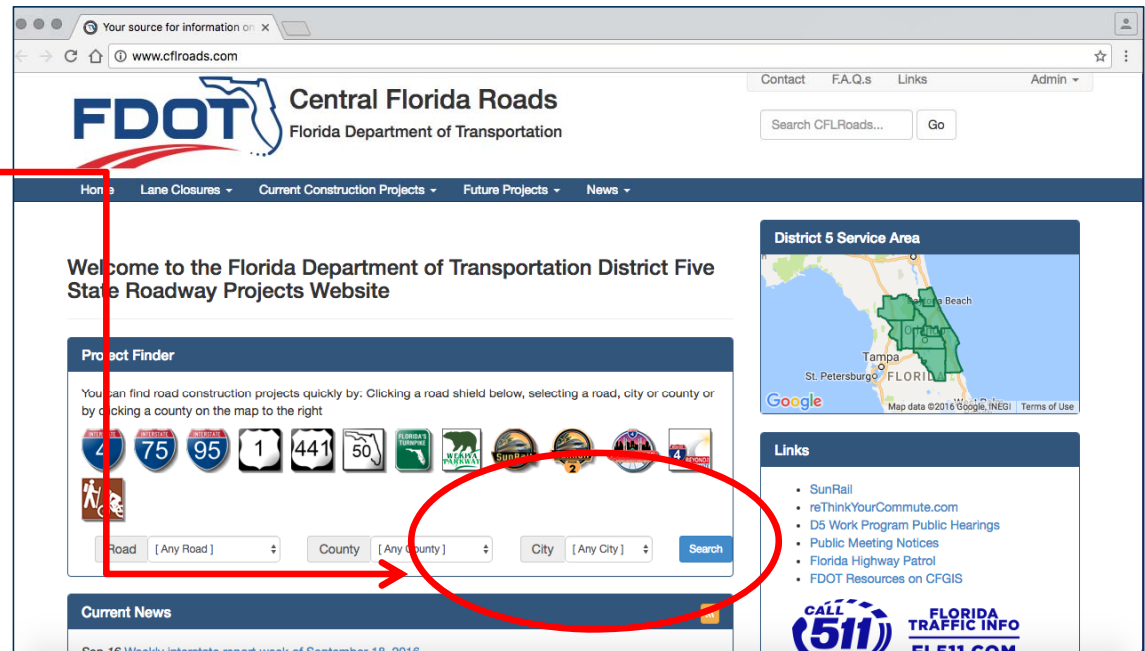


Project Features



www.cflroads.com

- *Select "Ocala" from the pull-down menu for "City" and click on Search*

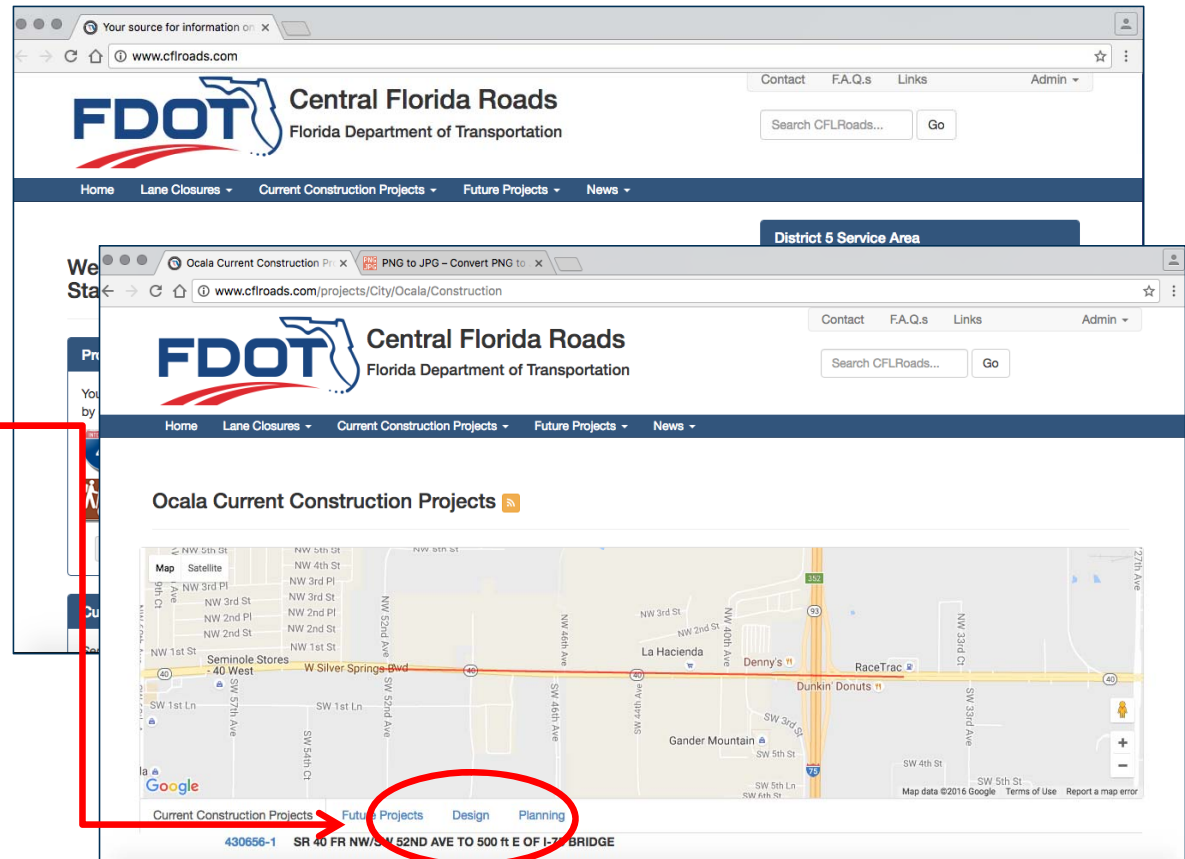


Project Features



www.cflroads.com

- Select "Ocala" from the pull-down menu for "City" and click on Search"
- *Click on "Design" link*

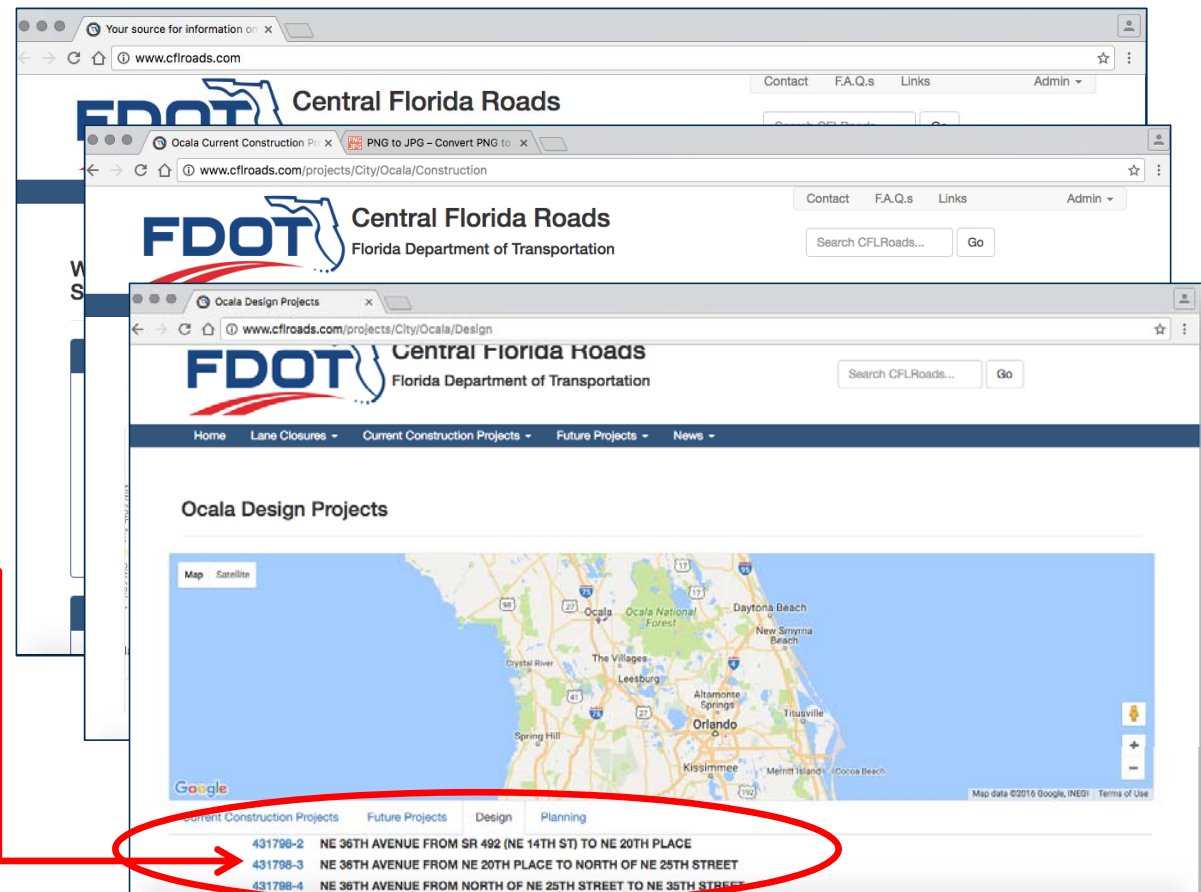


Project Features



www.cflroads.com

- Select "Ocala" from the pull-down menu for "City" and click on Search"
- Click on "Design" link
- ***Click on NE 36th Avenue segment***



Share Your Comments



- Complete a comment form and return it tonight or mail/email to Heather Johnstone, P.E. before November 11, 2016
- Use the “Ask a Question” button on the Central Florida Roads website (www.cflroads.com), NE 36th Avenue segment pages

COMMENT FORM

Public Meeting
November 1, 2016



NE 36th Avenue Widening Design Project
from SR 492 (NE 14th Street) to NE 35th Street
Financial Project ID Numbers: 431798-2-32-01, 431798-3-32-01, 431798-4-32-01

We'd like to hear from you! Please share your ideas and comments by writing them down here. Additional space for your comments is provided on the back of this form.

How to Submit Your Comments

If you would like your comments to be included in the meeting summary, you may return this form tonight or email comments by November 11, 2016. If mailing your comments, we would like to receive them by November 11, 2016.

Please return to:

Ms. Heather Johnstone, P.E.
FDOT Project Manager
FDOT - District Five
719 S. Woodland Boulevard, MS 542
DeLand, Florida 32720-6834
Phone: 386-943-5540
Email: heather.johnstone@dot.state.fl.us

Mailing List Information

Please check the box below if you would like to be added to the mailing list and please provide your name and mailing address.

☐ Add to mailing list

Name: _____

Mailing Address: _____

Email address (optional): _____

NOTE: The information you provide on this comment form becomes part of the NE 36th Avenue project files. This information may be provided to other individuals who may make a request for project information.

Contact Information



**If you have questions or would like more information,
you may also contact our project team.**

FDOT Project Manager

Heather Johnstone, P.E.
FDOT - District 5
719 South Woodland Boulevard, MS 542
DeLand, FL 32720-6834
(386) 943-5540
Heather.Johnstone@dot.state.fl.us

Consultant Project Manager

Gene Quinn, P.E., PLS
Volkert, Inc.
3501 South Main Street, Suite 2
Gainesville, FL 32601
(352) 372-9594
Gene.Quinn@volkert.com

All inquiries or complaints will be handled according to FDOT procedures and in a prompt and courteous manner.

NE 36th Avenue Widening Design Project



THANK YOU

Public Meeting on November 1, 2016

From State Road 492/NE14th Street to NE 35th Street in Marion County

Heather Johnstone, P.E., FDOT Project Manager

