



SR 426 and SR 551

Median Modifications Public Hearing

**Thursday
February 25, 2016**

Agenda

5:00 PM

- Please sign in
- Pick up a speaker request card if you wish to speak after the presentation, and/or a comment card if you would like to make a written statement.
- Open House—project staff available to answer questions

6:00 PM

- Presentation
- Public comments

7:00 PM

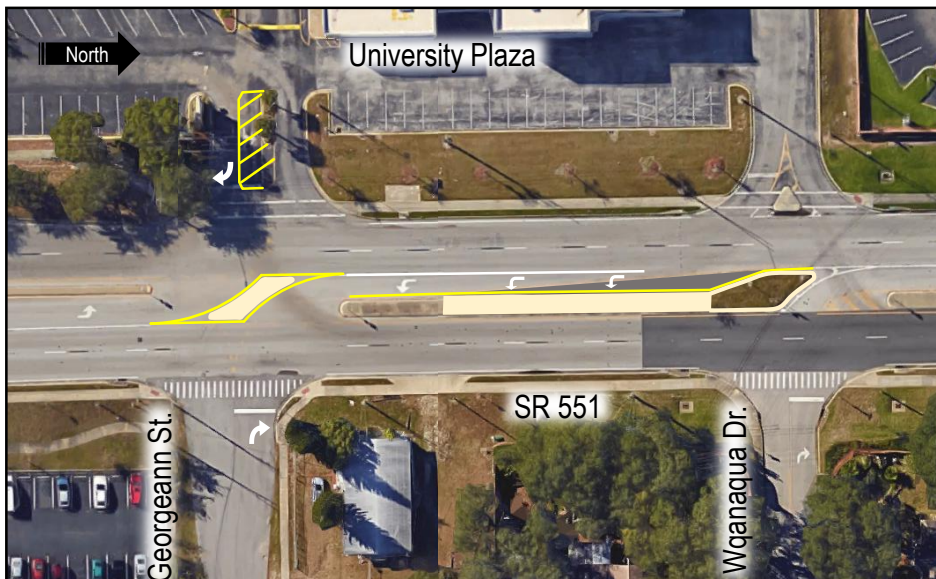
- Meeting ends



State Road (SR) 551 (North Goldenrod Avenue) at Georgeann Street

Median Modification:

The existing full median opening at SR 551 and Georgeann Street will be converted by FDOT to a directional median opening in order to reduce traffic conflicts and improve safety. Exiting Georgeann Street and the University Plaza driveway onto SR 551 will be by right turn only. The southbound left turn lane taper will be modified to provide maximum storage for turning vehicles.



SR 426 (Aloma Avenue) at Tangerine Avenue

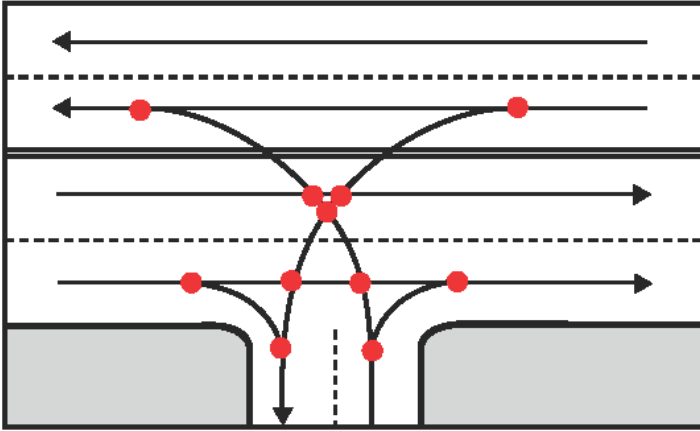
Median Modification:

The existing median opening at SR 426 and Tangerine Avenue will be converted by FDOT to an eastbound only directional median opening based on the evaluation of crashes and observed conflicts at this location. Exiting Tangerine Avenue onto SR 426 will be by right turn only.

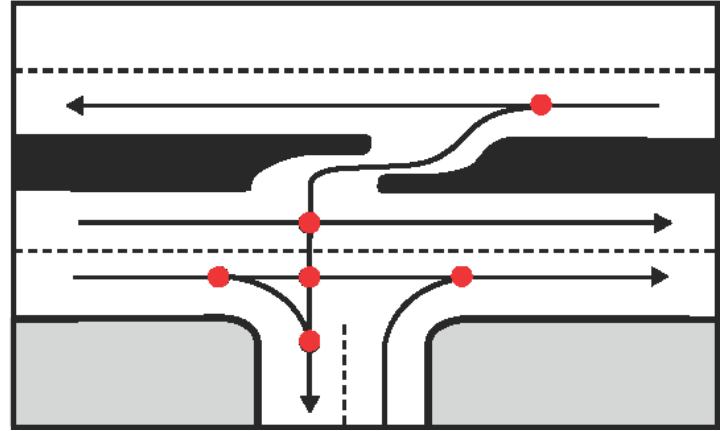
Access Management – Median Openings

Conflict points are locations along a roadway where two vehicles' paths can legally cross. At a four way intersection there are as many as 36 conflict points.

Each conflict point is a location where a crash can occur. A basic principle of access management is to limit the number of conflict points along a roadway by minimizing the number of driveways and median openings and restricting certain movements at some median openings. Drivers can be overwhelmed by conflict points in close proximity to one another, increasing the potential for crashes.



Before Access Management = More Conflicts



After Access Management = Less Conflicts

A typical median opening that allows all turns has numerous conflict points. One way to limit the number of conflicts is through the design of median openings. The above example on the right is a "directional" median opening serving a side street that allows for left-turns from the major street but prohibits left-turns from the minor street. This is a design which greatly reduces the conflict points by limiting the number of allowed turning movements.



For more information visit:
www.CFLroads.com



We Value Your Opinion

Public participation is solicited without regard to race, color, national origin, age, sex, religion, disability or family status. Persons wishing to express their concerns relative to FDOT compliance with Title VI may do so by contacting Jennifer Smith, FDOT District Five Title VI Coordinator by phone at (386) 943-5367, or via email at Jennifer.Smith2@dot.state.fl.us.

Public Comments

Thank you for your participation. Your input is important and any comments are appreciated. We encourage you to fill out a comment card, which is available at the sign-in table, and drop it in the comment box, or return it by mail to the address on the back of the card no later than March 7, 2016.

Written comments may also be submitted by mail to:

Dave Mixon

Florida Department of Transportation

District Five Traffic Operations

719 South Woodland Boulevard

M.S. # 562

DeLand, FL 32720

Or by email to:

Dave.Mixon@dot.state.fl.us

