



**I-95 AT  
U.S. 1**  
INTERCHANGE  
PD&E STUDY



# WELCOME

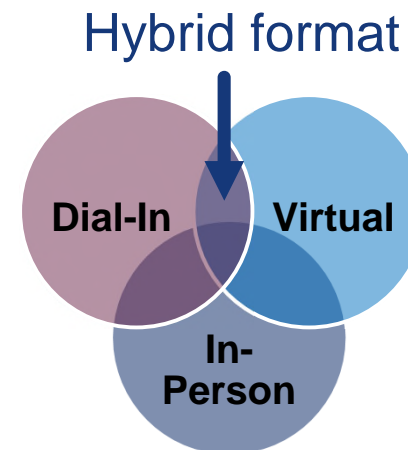
to the Alternatives Open House



## About the Alternatives Open House

This Alternatives Open House is being conducted in a hybrid format

- In-Person
- Virtual
- Dial-In



**Dial-in** attendees are “listen only”.

A copy of the presentation is available at  
[www.cflroads.com/project/419772-2](http://www.cflroads.com/project/419772-2)





**I-95 AT  
U.S. 1**  
INTERCHANGE  
PD&E STUDY

## National Environmental Policy Act (NEPA)



Florida Department of Transportation

The environmental review, consultation, and other actions required by applicable federal environmental laws for this project are being, or have been, carried out by FDOT pursuant to Title 23 U.S.C. § 327 and a Memorandum of Understanding dated May 26, 2022, and executed by the Federal Highway Administration and FDOT.



## Title VI of the Civil Rights Act of 1964

### Title VI Compliance

*Public participation is solicited without regard to race, color, national origin, age, sex, religion, disability, or family status. Persons wishing to express concerns relative to FDOT compliance with Title VI may do so by contacting:*

Jennifer Smith  
**District Five Title VI Coordinator**  
719 South Woodland Blvd.  
DeLand, FL 32720  
386-943-5367  
Jennifer.Smith2@dot.state.fl.us

Jacqueline Paramore  
**State Title VI Coordinator**  
605 Suwannee St., MS 65  
Tallahassee, FL 32399-0450  
850-414-4753  
Jacqueline.Paramore@dot.state.fl.us

*All inquiries or concerns will be handled according to FDOT procedure and in a prompt and courteous manner.*



**I-95 AT  
U.S. 1**  
INTERCHANGE  
PD&E STUDY

# Public Notice



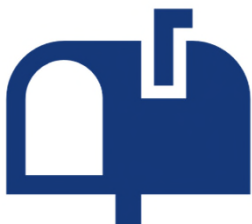
**Florida Administrative  
Register**



**Department/project webpage**



**Newspapers**



**Property owner/tenant letters**



**Elected & Appointed Officials**

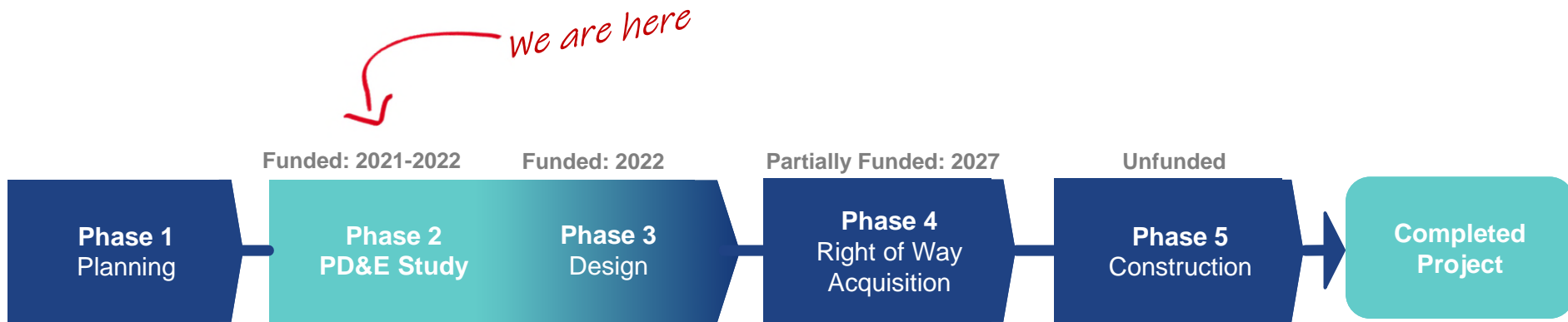


**Email to project contacts list**



**I-95 AT  
U.S. 1**  
INTERCHANGE  
PD&E STUDY

# Transportation Development Process





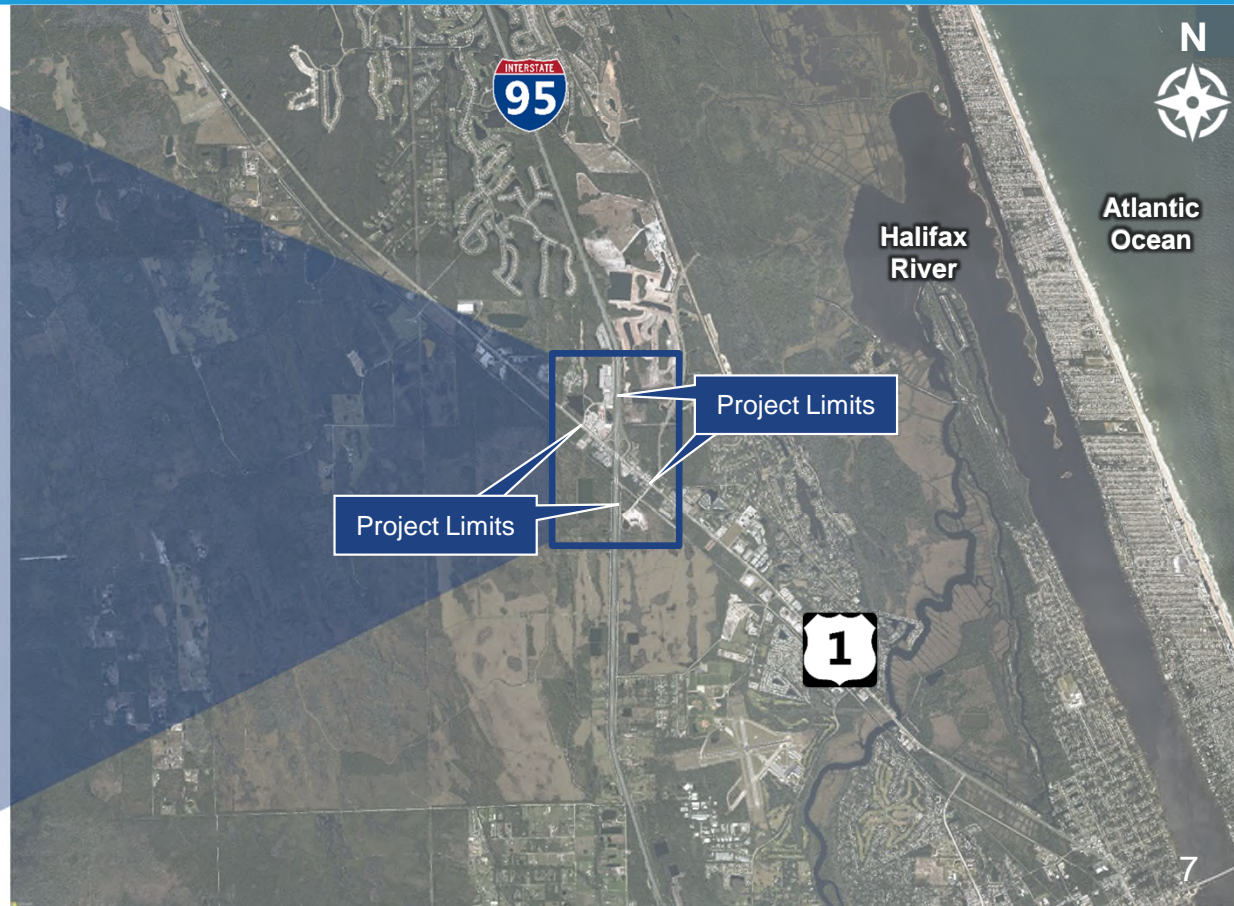


**I-95 AT  
U.S. 1**  
INTERCHANGE  
PD&E STUDY

# Project Background



Note: Florida East Coast (FEC)

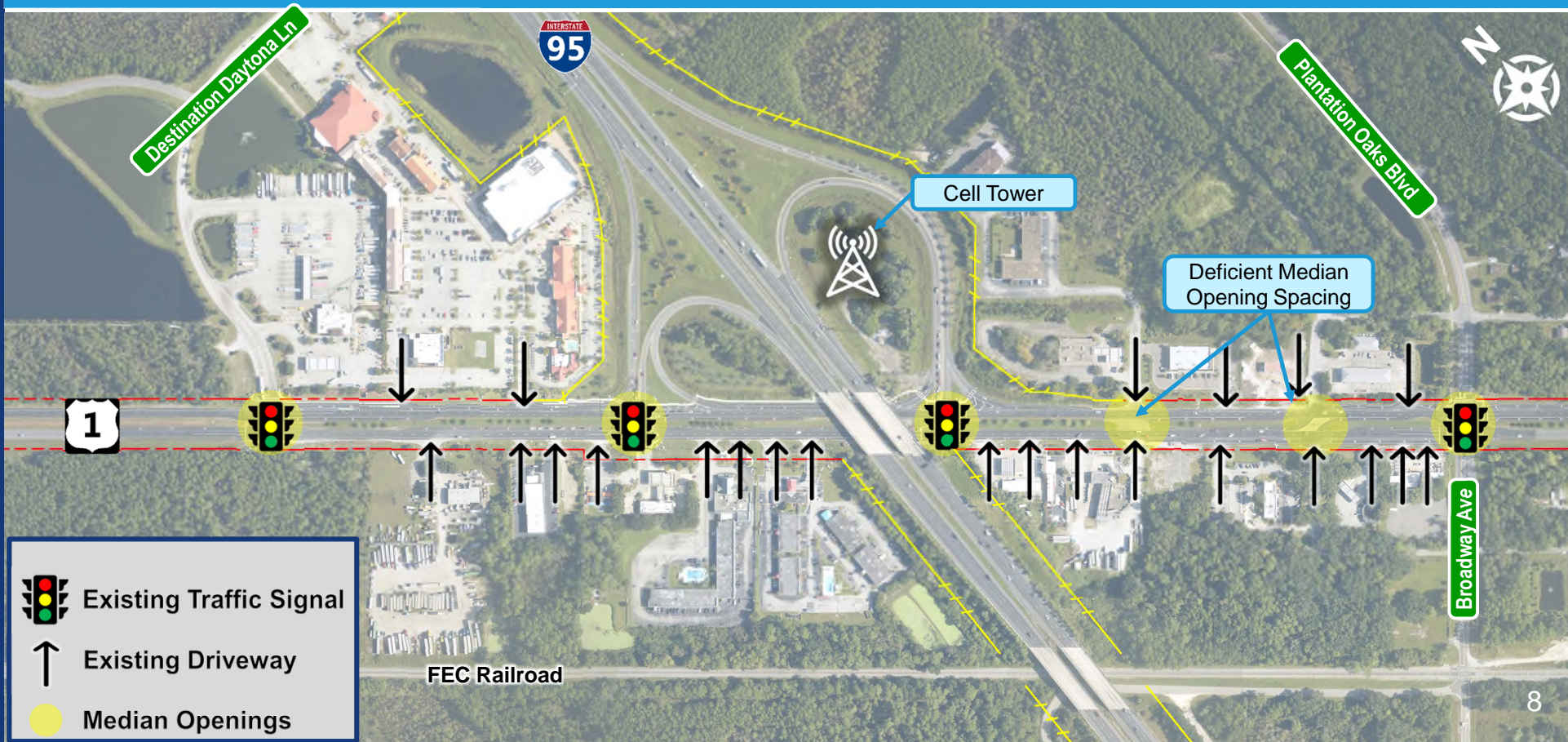






# I-95 AT U.S. 1 INTERCHANGE PD&E STUDY

## Existing Characteristics

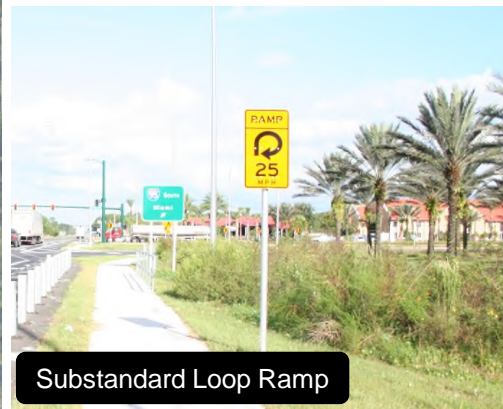
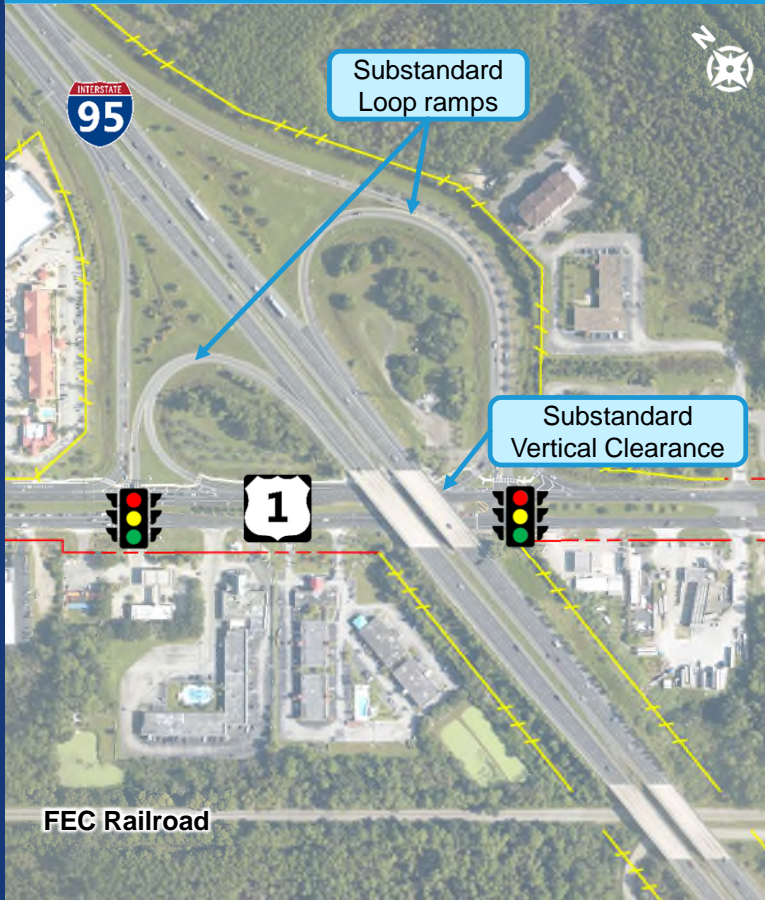






**I-95 AT  
U.S. 1**  
INTERCHANGE  
PD&E STUDY

# Existing Characteristics



Substandard Loop Ramp



Substandard Vertical Clearance



Bicycle / Pedestrian Features



# Future Developments

- **Ormond Crossings**

- 3,000 acres
- 2,950 residential units
- 900,000 square feet of office space
- 800,000 square feet of industrial space
- School

- **Plantation Oaks**

- 1,044 acres
- 1,500 residential lots







**I-95 AT  
U.S. 1**  
INTERCHANGE  
PD&E STUDY

# Traffic Analysis

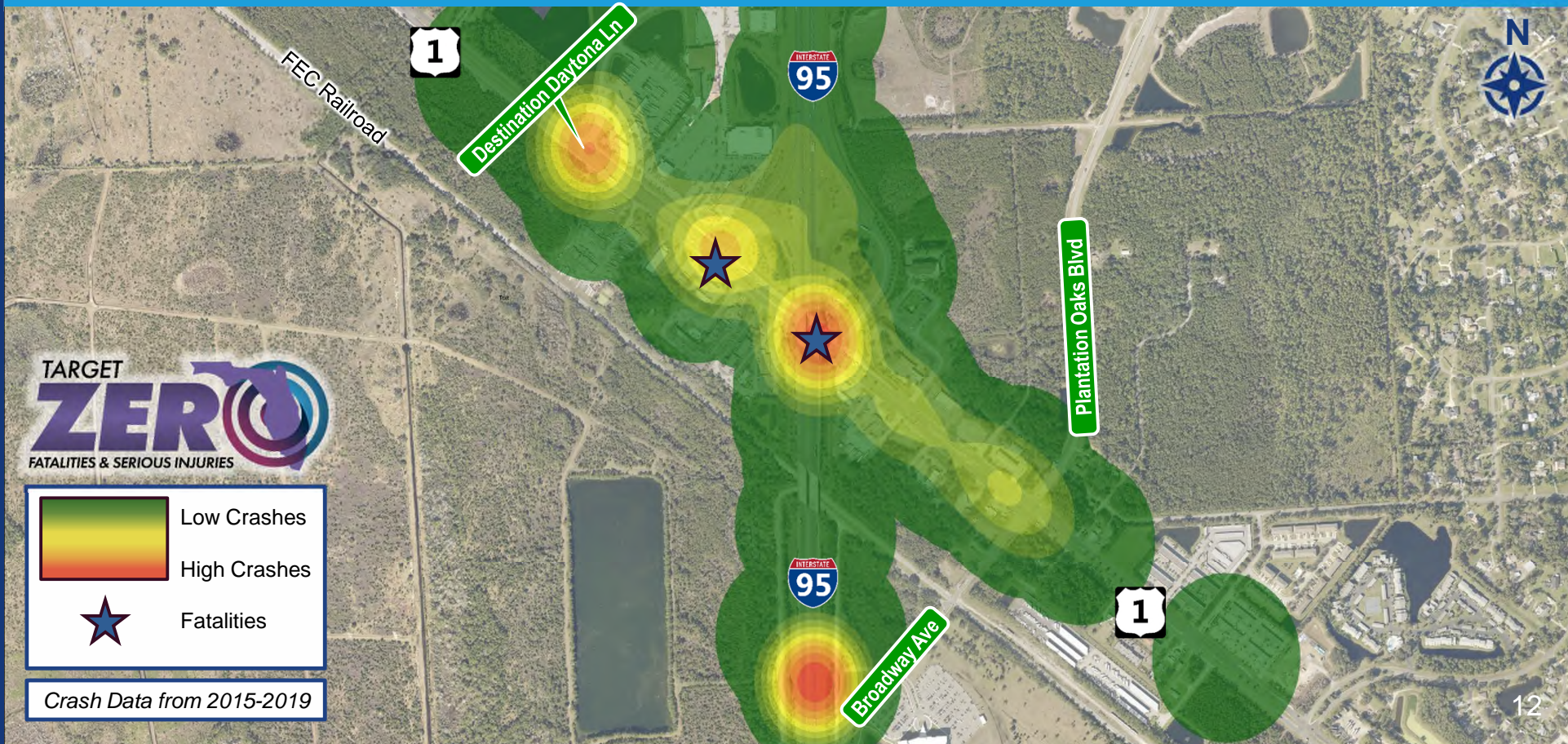






**I-95 AT  
U.S. 1**  
INTERCHANGE  
PD&E STUDY

# Crash History







- **What is the purpose of the study?**

- Accommodate the existing and future travel demand
- Improve safety
- Enhance pedestrian connectivity

- **Why is the project needed?**

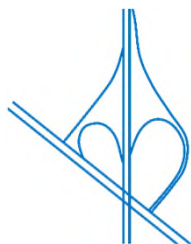
The project is needed to:

- Improve traffic operations and mobility
- Reduce congestion
- Enhance safety for all travel modes



## Alternatives Considered

- **No-Build Alternative**

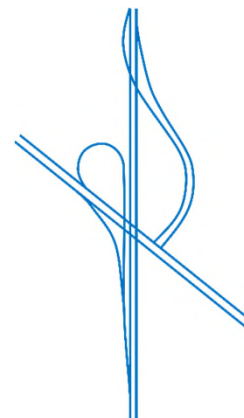


*(Existing interchange remains)*

- **Two Build Alternatives**



**Diverging Diamond  
Interchange (DDI)**



**Offset Intersection  
Interchange (Offset)**



**I-95 AT  
U.S. 1**  
INTERCHANGE  
PD&E STUDY

# No-Build Alternative



- Assumes no improvements
- Existing substandard conditions remain
- Traffic operations will continue to degrade
- Congestion will intensify
- Incomplete bicycle and pedestrian network will remain
- Does not meet project purpose and need



# Build Alternatives

## Traffic Conditions

- Unique mix of traffic
- Increase capacity at ramp intersections and along U.S. 1
- Designing for year 2050

## Existing Infrastructure

- Replace substandard loop ramps
- Enhance bicycle and pedestrian network

## Safety

- Establish appropriate travel speeds along U.S. 1
- Reduce potential conflict points (driveways and median openings)

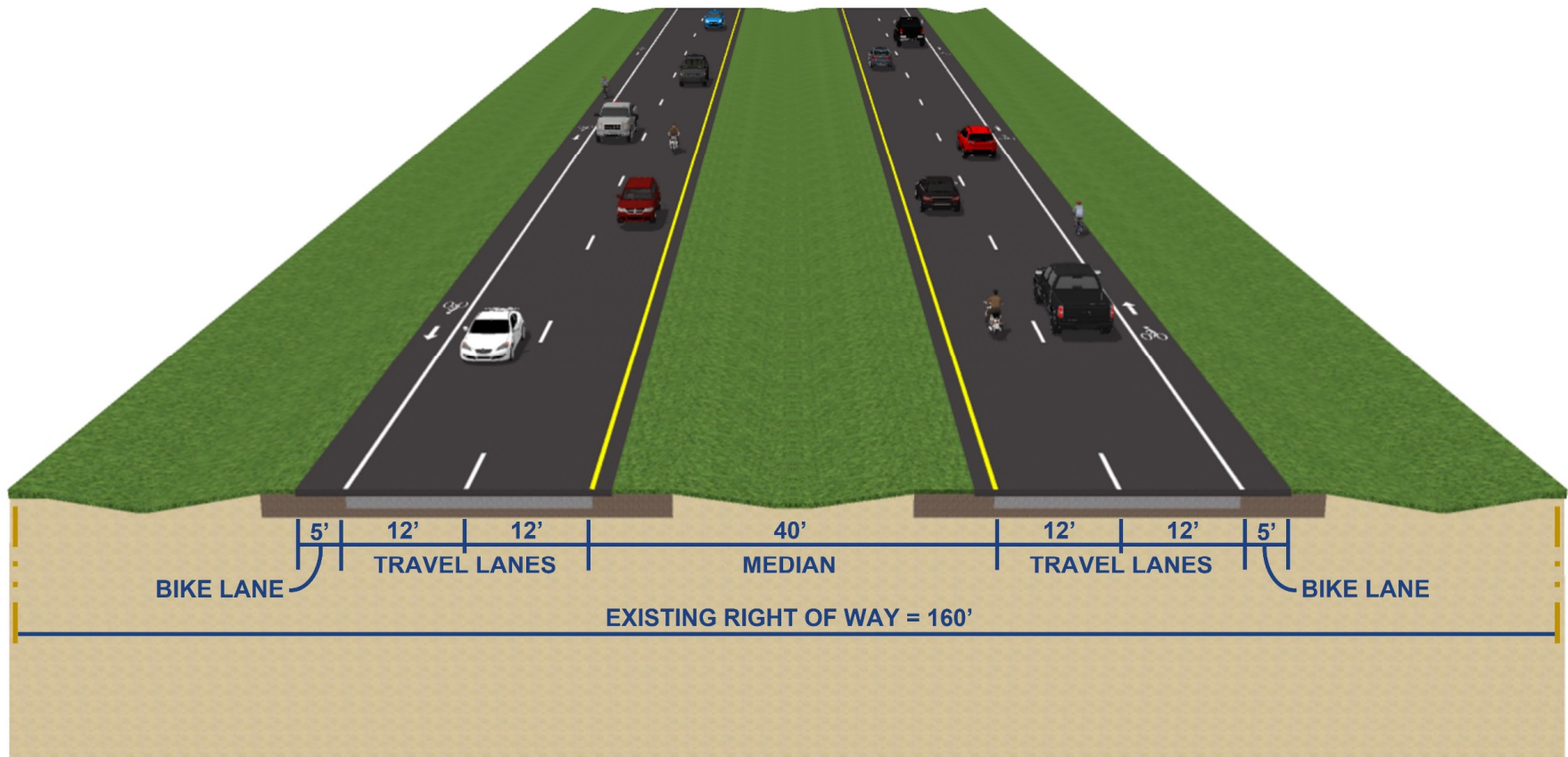






**I-95 AT  
U.S. 1**  
INTERCHANGE  
PD&E STUDY

# U.S. 1 Improvement Existing Typical Section

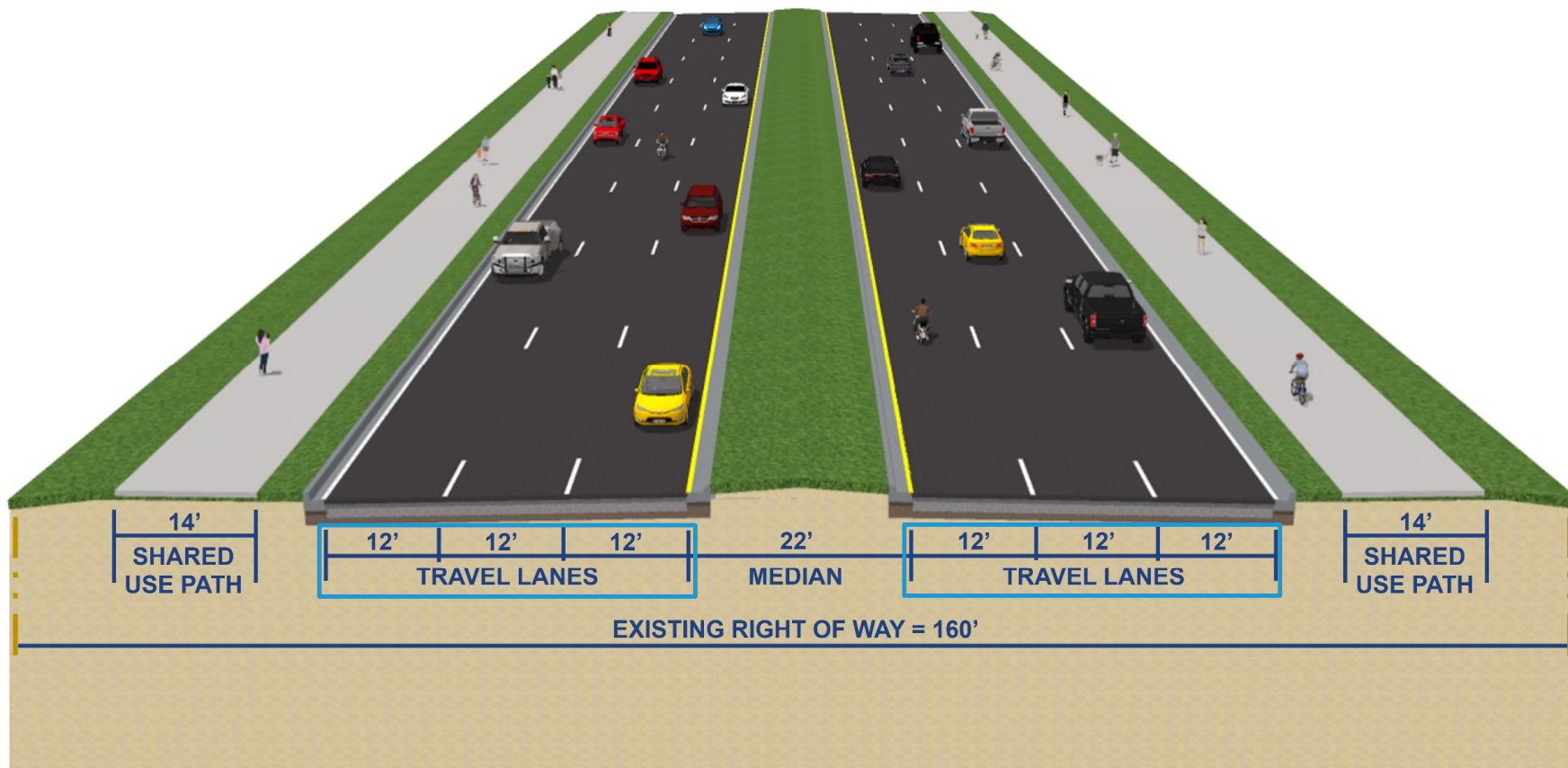




**I-95 AT  
U.S. 1**  
INTERCHANGE  
PD&E STUDY

# U.S. 1 Improvement

## Proposed U.S. 1 DDI Typical Section

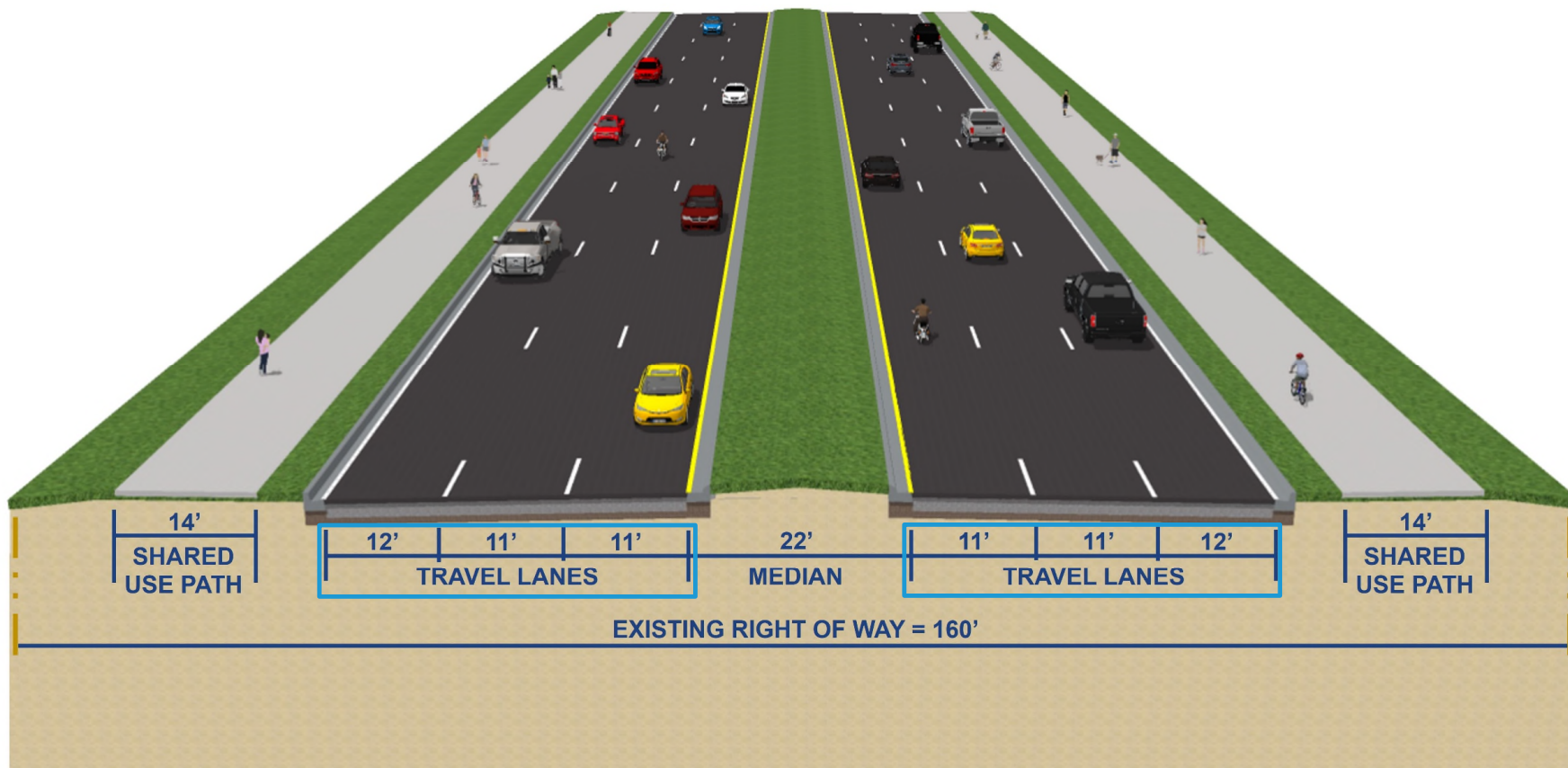




**I-95 AT  
U.S. 1**  
INTERCHANGE  
PD&E STUDY

# U.S. 1 Improvement

## Proposed U.S. 1 Offset Typical Section

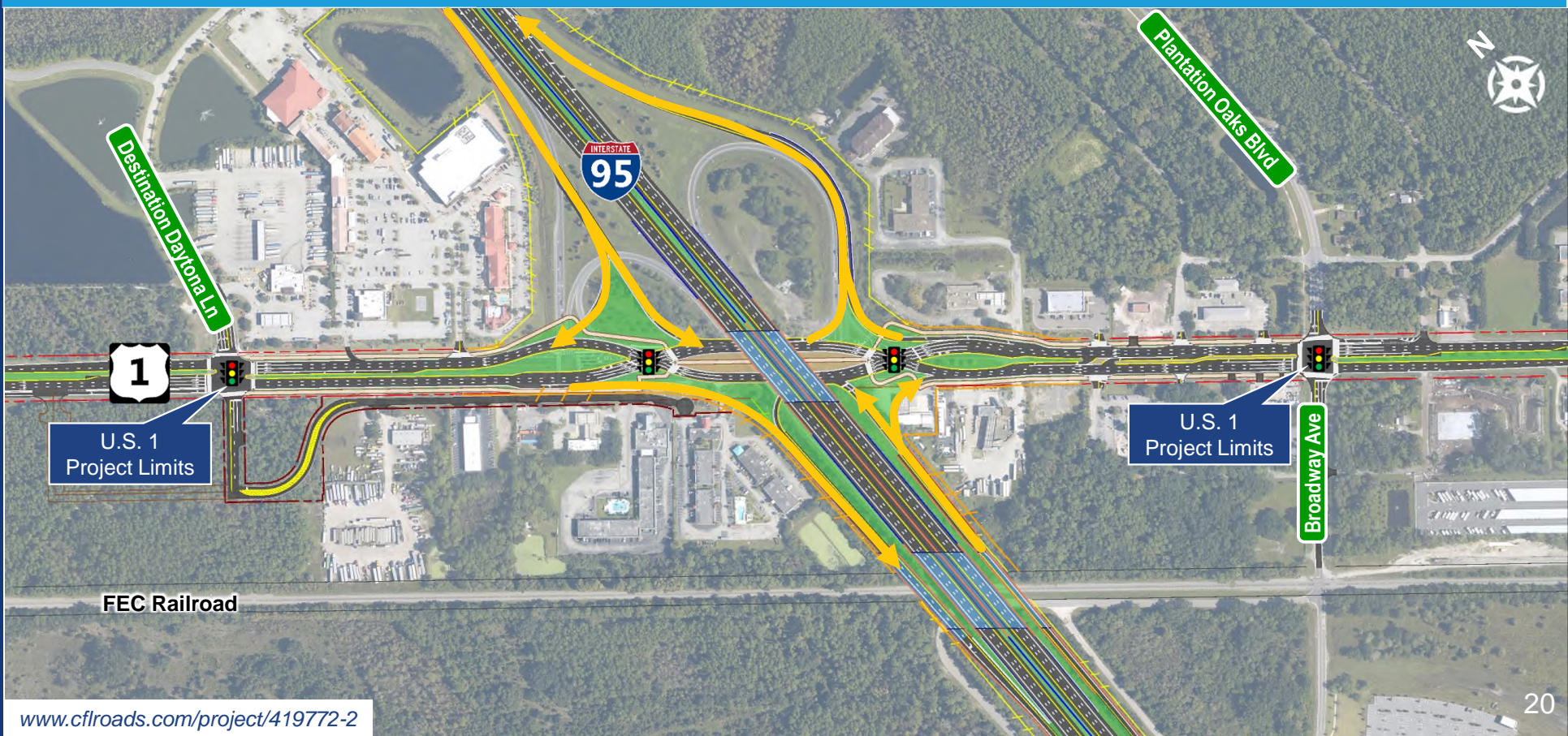
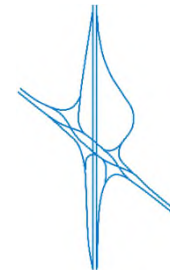






**I-95 AT  
U.S. 1**  
INTERCHANGE  
PD&E STUDY

# Diverging Diamond Interchange (DDI) Alternative

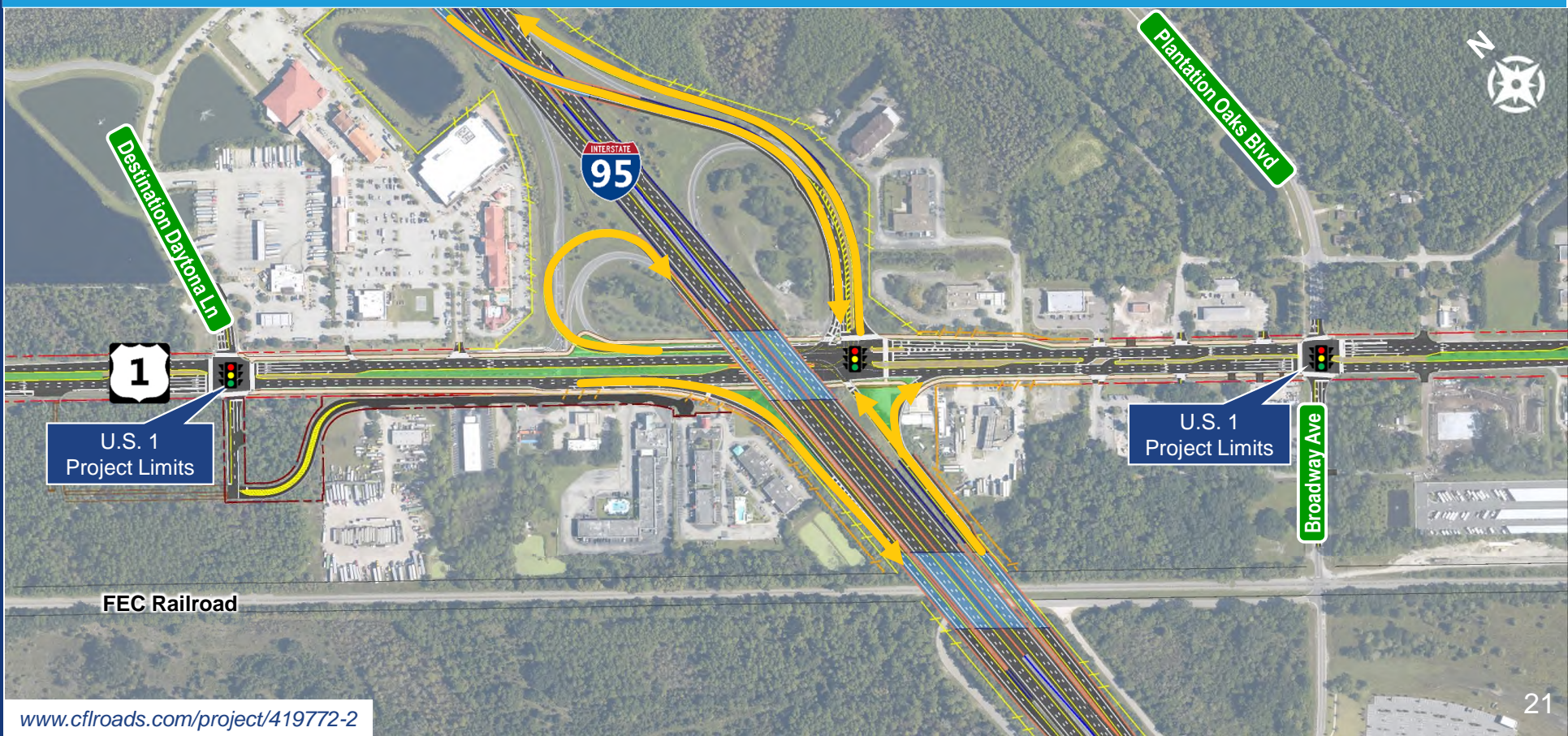
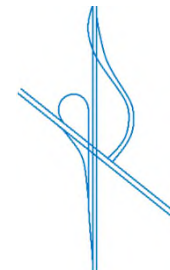






**I-95 AT  
U.S. 1**  
INTERCHANGE  
PD&E STUDY

# Offset Intersection (Offset) Alternative





Potential effects to the social, cultural, natural, and physical environment will be analyzed in accordance with state and federal regulations.



## SOCIAL AND ECONOMIC

- Social
- Aesthetic Affects
- Relocation Potential

## PHYSICAL

- Highway Traffic Noise
- Air Quality
- Contamination

## NATURAL

- Wetlands and Other Surface Waters
- Water Resources
- Floodplains
- Protected Species and Habitat

## CULTURAL

- Historical Sites/Resources
- Archaeological Sites





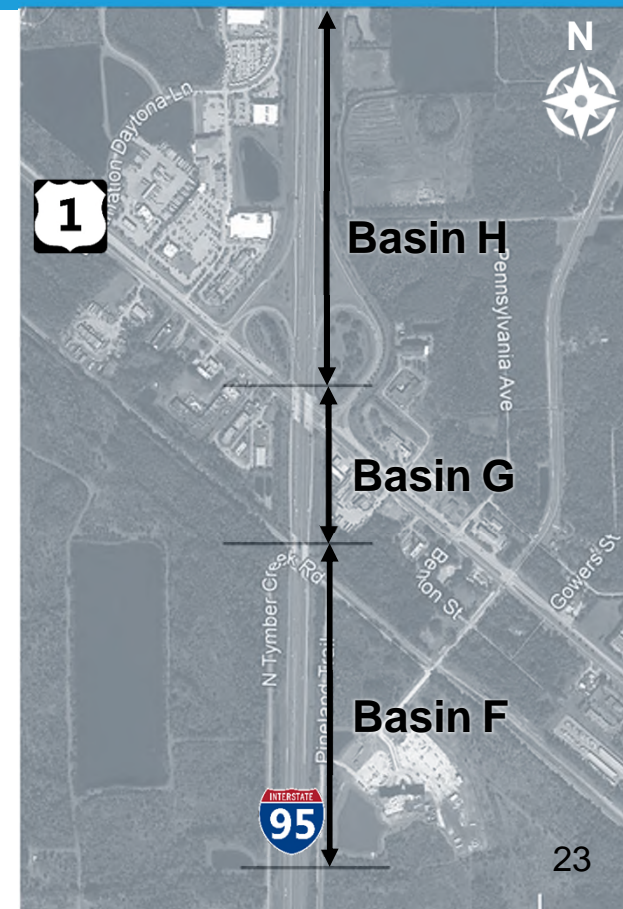
# Drainage Analysis

- **Stormwater Ponds**

- Meet St. Johns River Water Management District standards
- Evaluate 3 alternative pond sites for each drainage basins

- **Floodplain Compensation Ponds**

- Ensure project has no adverse impacts to FEMA flood zones
- Evaluate 2 alternatives per potential encroachment





# Preliminary Evaluation Matrix Summary

Evaluation Criteria		DDI	Offset	No-Build
<b>Purpose and Need</b>	Accommodates Future Traffic Demand	Yes	Yes	No
	Improves Safety	Yes	Yes	No
	Improves Bicycle and Pedestrian Facilities	Yes	Yes	No
<b>Social and Economic</b>	Additional Right of Way (acres)	5.0	5.1	0
	Total Parcels Impacted	16	15	0
	Business Displacements	2	2	0
	Access Impacts	13	13	0
<b>Physical</b>	Noise Sensitive Sites	3	3	0
	Utility Conflicts	Minor	Minor	None
<b>Natural</b>	Floodplain Impacts (acres)	1.3	1.1	0
	Wetland Impacts (acres)	0.8	0.8	0
	Contamination Sites	4	4	0
	Listed Species Involvement	Minor	Minor	None
	Historic / Cultural Resource Sites	6	6	0
<b>Costs</b>	Design Cost (million)	\$3.3	\$3.3	\$0
	Construction Engineering and Inspection Cost (million)	\$9.1	\$9.9	\$0
	Construction (million)	\$130.1	\$140.9	\$0

**Notes:** 1. This analysis does not yet include pond sites.  
 2. The No-Build Alternative does not meet the project's purpose and need.





**I-95 AT  
U.S. 1  
INTERCHANGE  
PD&E STUDY**

# PD&E Schedule

Tentative – Subject to Change

Project Milestones	2021		2022				2023			
	July – September	October – December	January – March	April – June	July – September	October – December	January – March	April – June	July - September	October - December
Begin Study										
Data Collection										
Project Advisory Group Meetings										
Select and Refine Viable Alternatives										
Conduct Alternatives Open House										
Select and Refine Preferred Alternative										
Prepare Documents										
Conduct Public Hearing										
Project Approval										
Stakeholder Engagement										



# I-95 AT U.S. 1 INTERCHANGE PD&E STUDY

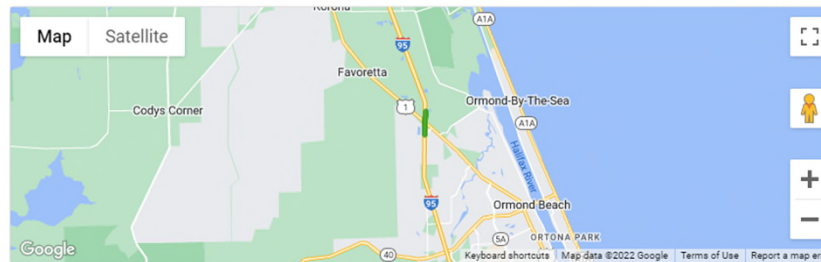
## Project Website

[www.cflroads.com/project/419772-2](http://www.cflroads.com/project/419772-2)



[CFLRoads Home](#)
[Lane Closures](#)
[Construction Projects](#)
[Future Projects](#)
[News](#)
[Resources](#)

419772-2 I-95 Interchange at SR 5 (US 1)



### About

The Florida Department of Transportation (FDOT) is conducting a Project Development and Environment (PD&E) Study for the Interstate 95 (I-95) at U.S. 1 interchange (exit 273) in Ormond Beach.

This study will evaluate improvements to the I-95 interchange as well as the approximately one-mile segment of U.S. 1 between Plantation Oaks Boulevard/Broadway Avenue and Destination Daytona Lane. The purpose of this PD&E Study is to accommodate the existing and future travel demand, improve safety and enhance pedestrian connectivity by developing solutions, known as alternatives, that improve operations at the I-95 interchange and along U.S. 1.

The PD&E study began in August 2021 and is anticipated to take 24 months to complete.

### Project Details

**Work Type:** PD&E Study  
**Phase:** PD&E  
**Length:** 1 miles  
**County:** Volusia  
**Road:** I-95  
 US 1

[Send a comment or ask a question about this project](#)

### Contact Information

**PD&E Project Manager**  
 Jesse Blouin  
 386-943-5167  
[jesse.blouin@dot.state.fl.us](mailto:jesse.blouin@dot.state.fl.us)

Last Updated  
 04/04/2022

Public participation is solicited without regard to race, color, national origin, age, sex, religion, disability or family status. Persons with questions regarding nondiscrimination or Civil Rights, please contact the [Civil Rights Officer](#).

[Contact Us](#)
[Employment](#)
[MyFlorida.com](#)
[Performance](#)
[Statement of Agency](#)
[Web Policies & Notices](#)



© 1996 - 2022 Florida Department of Transportation

Florida Department of Transportation  
 Improve Safety, Enhance Mobility, Inspire Innovation



## Public Comments and Questions

- **In-person**
  - Submit Comment Form
- **Virtually**
  - GoToWebinar: Type your comment/question in the **question box**
  - Online at the project website  
[www.cflroads.com/project/419772-2](http://www.cflroads.com/project/419772-2)
- **By email to FDOT Project Manager**
- **By U.S. mail to FDOT Project Manager**
- **By phone at 386-943-5167**

### Project Manager Contact Information

Jesse Blouin, AICP  
 719 S. Woodland Blvd., MS 501  
 DeLand, FL 32720  
[Jesse.Blouin@dot.state.fl.us](mailto:Jesse.Blouin@dot.state.fl.us)  
 386-943-5167



**I-95 AT  
U.S. 1**  
INTERCHANGE  
PD&E STUDY

Thank you for participating

Please submit comments and questions by July 1, 2022

Jesse.Blouin@dot.state.fl.us



719 S. Woodland Blvd., MS 501, DeLand, FL 32720



386-943-5167



[www.cflroads.com/project/419772-2](http://www.cflroads.com/project/419772-2)





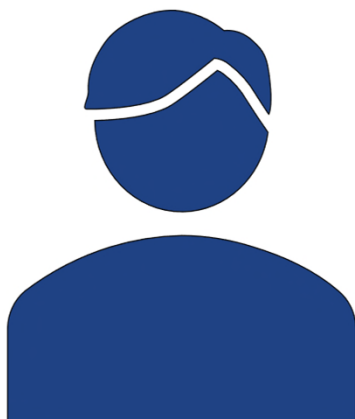
**I-95 AT  
U.S. 1**  
INTERCHANGE  
PD&E STUDY





**I-95 AT  
U.S. 1**  
INTERCHANGE  
PD&E STUDY

# Welcome



**Jesse Blouin, AICP**

FDOT Project Manager

719 S. Woodland Blvd., MS 501

DeLand, FL 32720

[Jesse.Blouin@dot.state.fl.us](mailto:Jesse.Blouin@dot.state.fl.us)

386-943-5167



**We are experiencing technical difficulties**

**Our team is actively  
working to fix the issue and  
hope to have this resolved  
soon.**

Thank you for your patience.