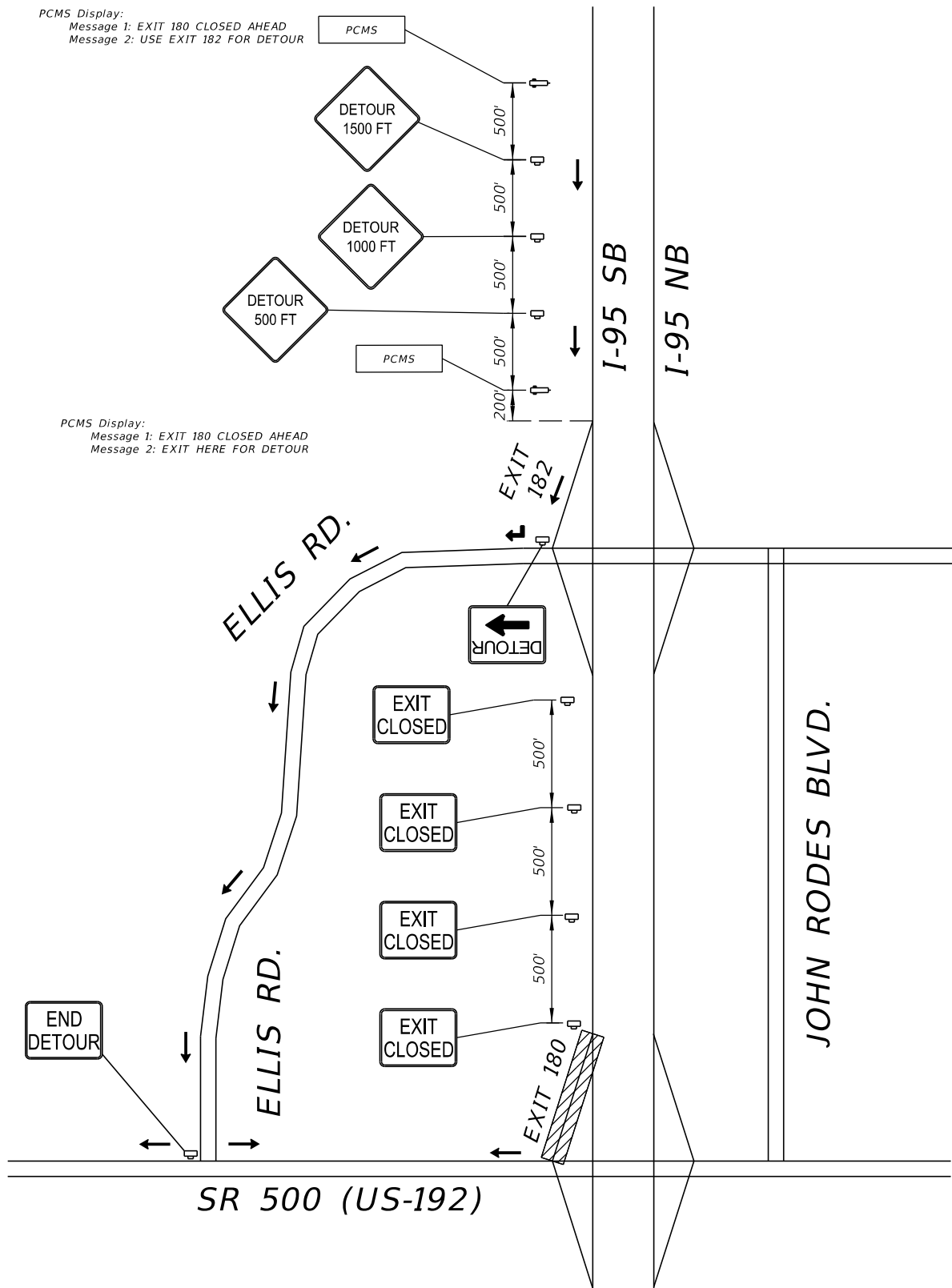


SPECIAL DETOUR A

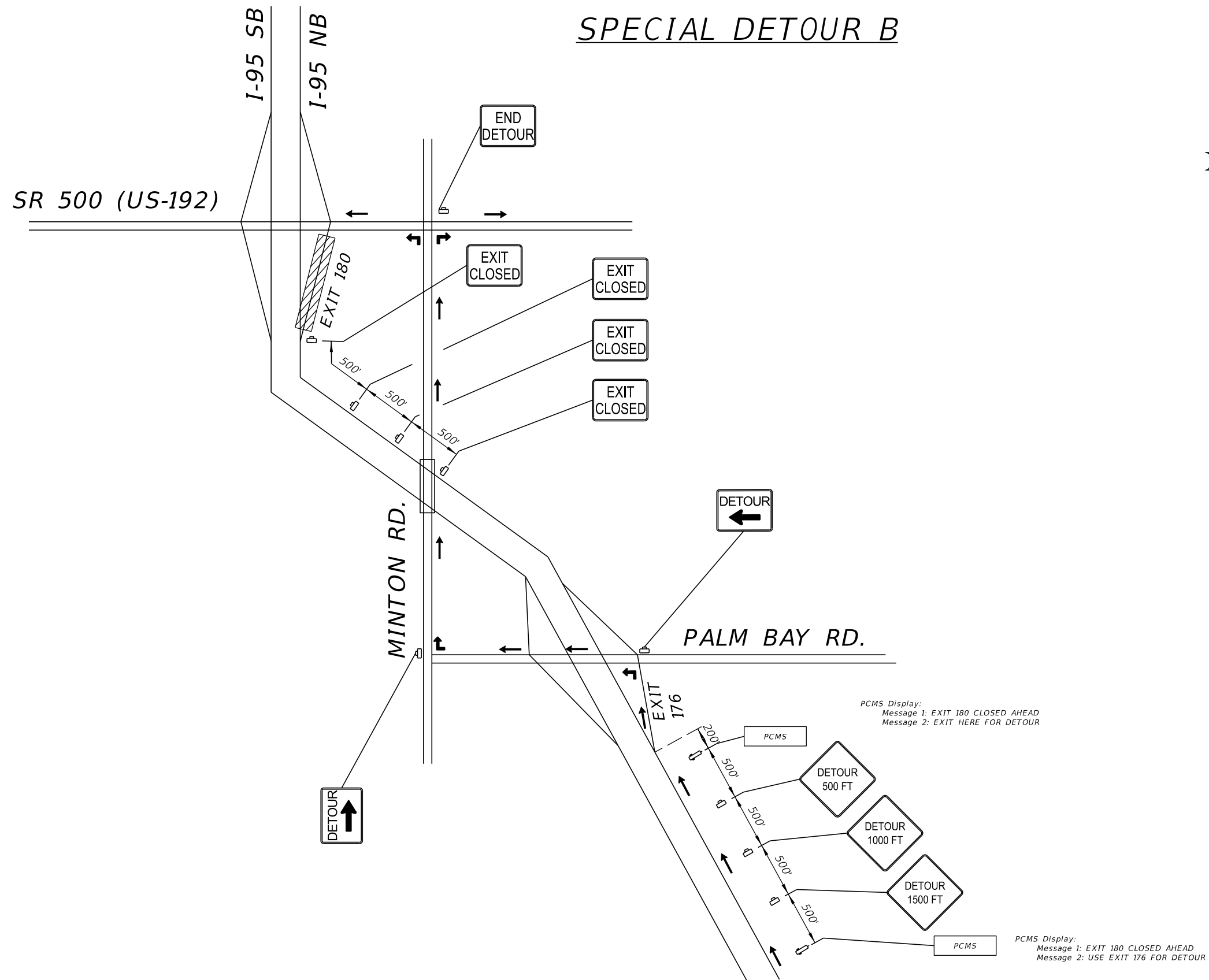


- LEGEND**
- Advance Warning Arrow Panel
 - Channelizing Device (See Index 600)
 - Lane Identification and Direction of Traffic
 - Portable Changeable (Variable) Message Sign
 - Portable Regulatory Sign
 - Radar Speed Display Unit
 - Work Area
 - Work Zone Sign

REVISIONS				LUIS E. NIETO, P.E. P.E. LICENSE NUMBER 77621 TETRA TECH, INC. 201 EAST PINE STREET, SUITE 1000 ORLANDO, FL 32801 CERTIFICATE OF AUTHORIZATION 2429	STATE OF FLORIDA DEPARTMENT OF TRANSPORTATION			TEMPORARY TRAFFIC CONTROL PLAN	SHEET NO.
DATE	DESCRIPTION	DATE	DESCRIPTION		ROAD NO.	COUNTY	FINANCIAL PROJECT ID		86
					SR 500	BREVARD	442882-1-52-01		

THE OFFICIAL RECORD OF THIS SHEET IS THE ELECTRONIC FILE DIGITALLY SIGNED AND SEALED UNDER RULE 61G15-23.004, F.A.C.

SPECIAL DETOUR B



- LEGEND**
- Advance Warning Arrow Panel
 - Channelizing Device (See Index 600)
 - Lane Identification and Direction of Traffic
 - Portable Changeable (Variable) Message Sign
 - Portable Regulatory Sign
 - Radar Speed Display Unit
 - Work Area
 - Work Zone Sign

PCMS Display:
 Message 1: EXIT 180 CLOSED AHEAD
 Message 2: EXIT HERE FOR DETOUR

PCMS Display:
 Message 1: EXIT 180 CLOSED AHEAD
 Message 2: USE EXIT 176 FOR DETOUR

REVISIONS				LUIS E. NIETO, P.E. P.E. LICENSE NUMBER 77621 TETRA TECH, INC. 201 EAST PINE STREET, SUITE 1000 ORLANDO, FL 32801 CERTIFICATE OF AUTHORIZATION 2429	STATE OF FLORIDA DEPARTMENT OF TRANSPORTATION			TEMPORARY TRAFFIC CONTROL PLAN	SHEET NO.
DATE	DESCRIPTION	DATE	DESCRIPTION		ROAD NO.	COUNTY	FINANCIAL PROJECT ID		87
					SR 500	BREVARD	442882-1-52-01		

THE OFFICIAL RECORD OF THIS SHEET IS THE ELECTRONIC FILE DIGITALLY SIGNED AND SEALED UNDER RULE 61G15-23.004, F.A.C.