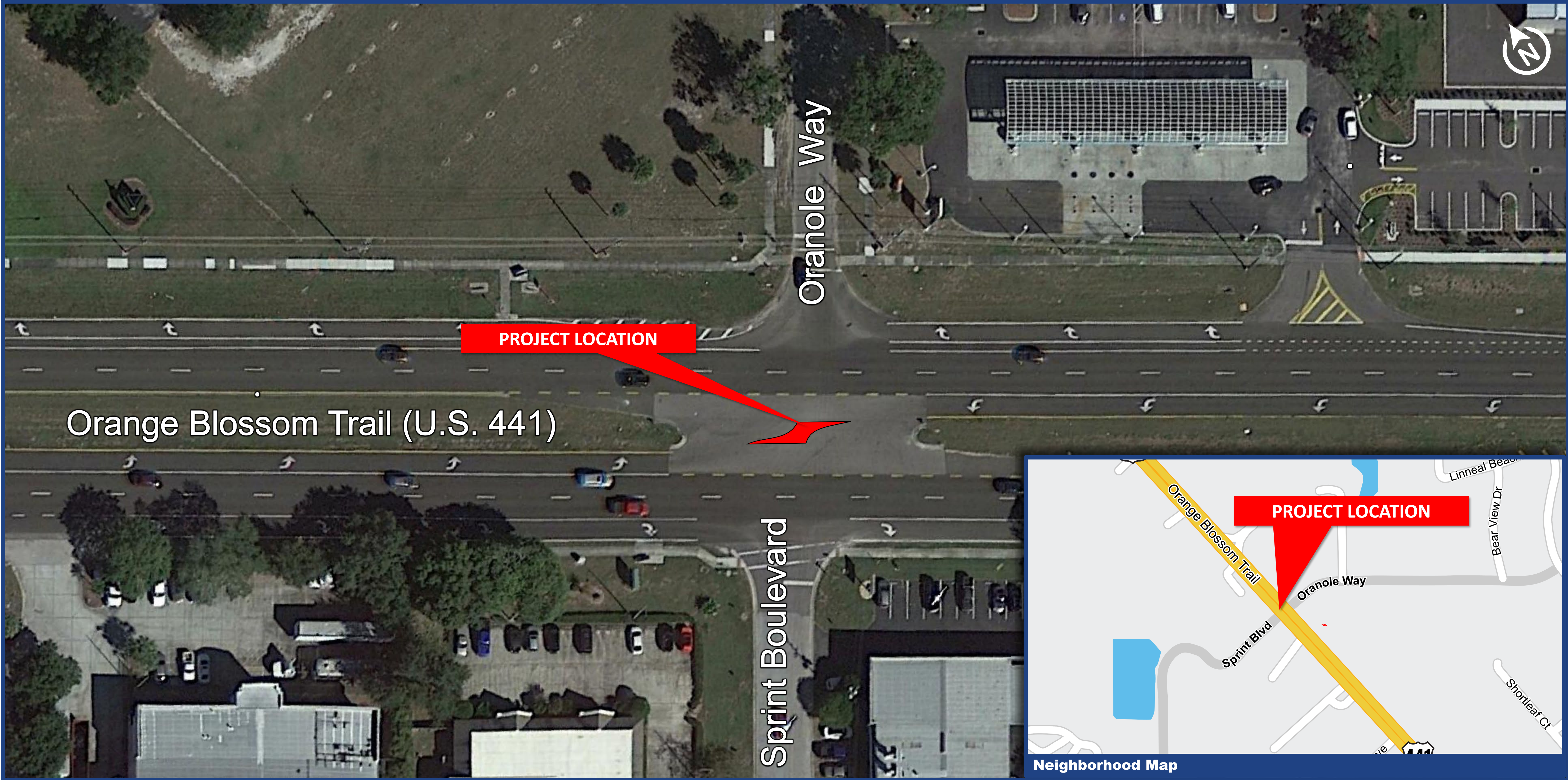


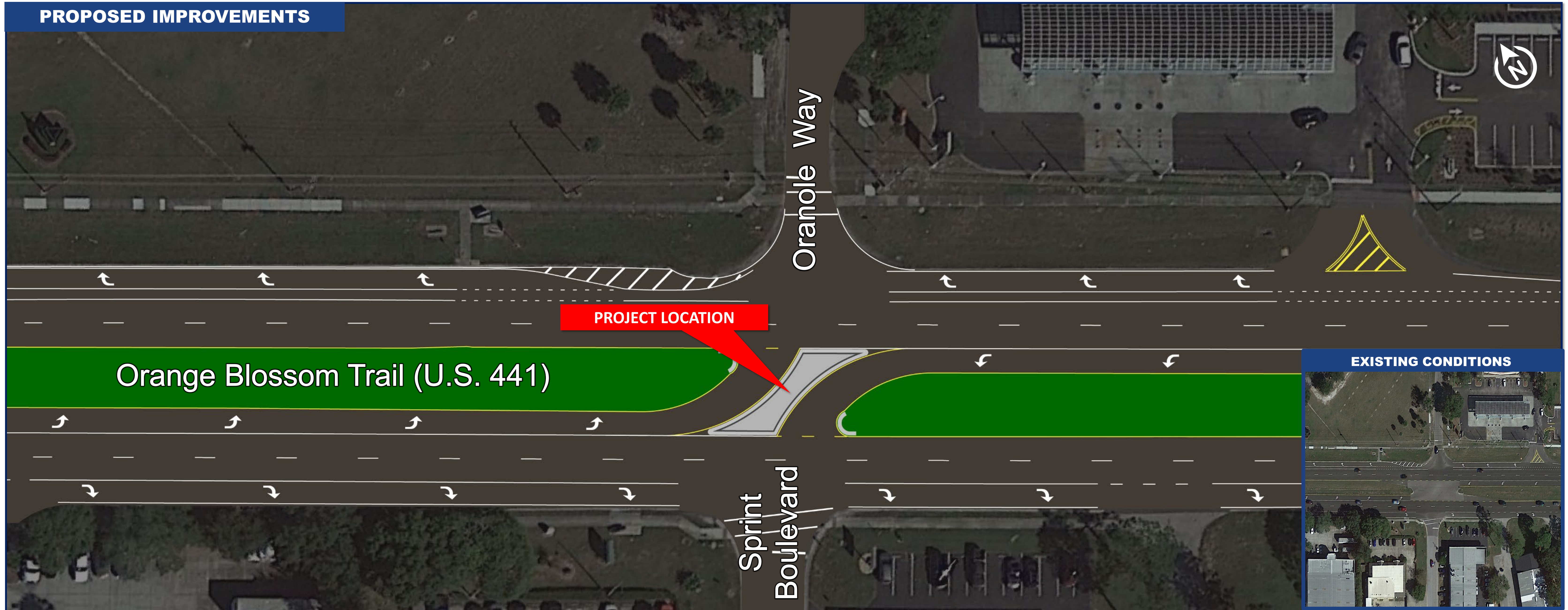
# Project Location



Download this exhibit on the project website  
[www.CFLRoads.com/project/992100-2](http://www.CFLRoads.com/project/992100-2)

Orange County, Florida  
Financial Project Identification (FPID) No. 992100-2

# Proposed Improvements



Proposed improvements include converting the existing full median opening to a two-way directional median opening.



Download this exhibit on the project website  
[www.CFLRoads.com/project/992100-2](http://www.CFLRoads.com/project/992100-2)  
Orange County, Florida  
Financial Project Identification (FPID) No. 992100-2



# Proposed Improvements



## Westbound at Oranole Way



Proposed improvements on Orange Blossom Trail (U.S. 441) include the construction of a median island, creating a two-way directional median opening. Left turns will not be permitted from Oranole Way or Sprint Boulevard onto Orange Blossom Trail.



## Northbound on Orange Blossom Trail (U.S. 441)



The two-way directional median opening will still permit left turns from motorists traveling northbound and southbound, as well as U-Turns, on Orange Blossom Trail.



Download this exhibit on the project website  
[www.CFLRoads.com/project/992100-2](http://www.CFLRoads.com/project/992100-2)

Orange County, Florida  
Financial Project Identification (FPID) No. 992100-2



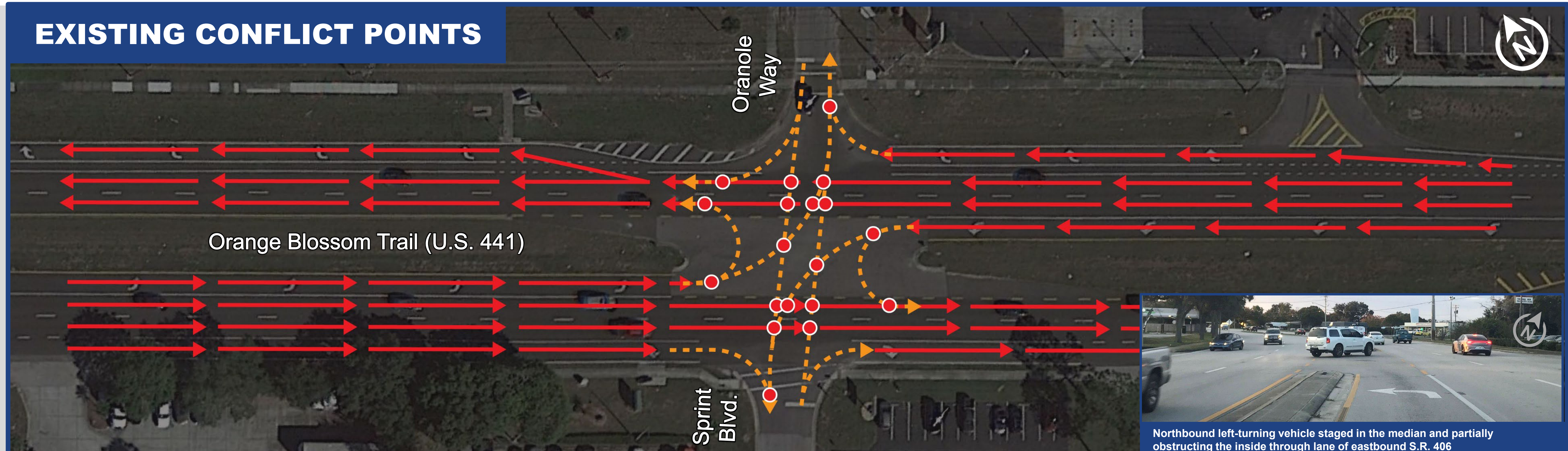
# Conflict Points

Conflict points are locations along a roadway where two vehicles could cross and potentially collide.

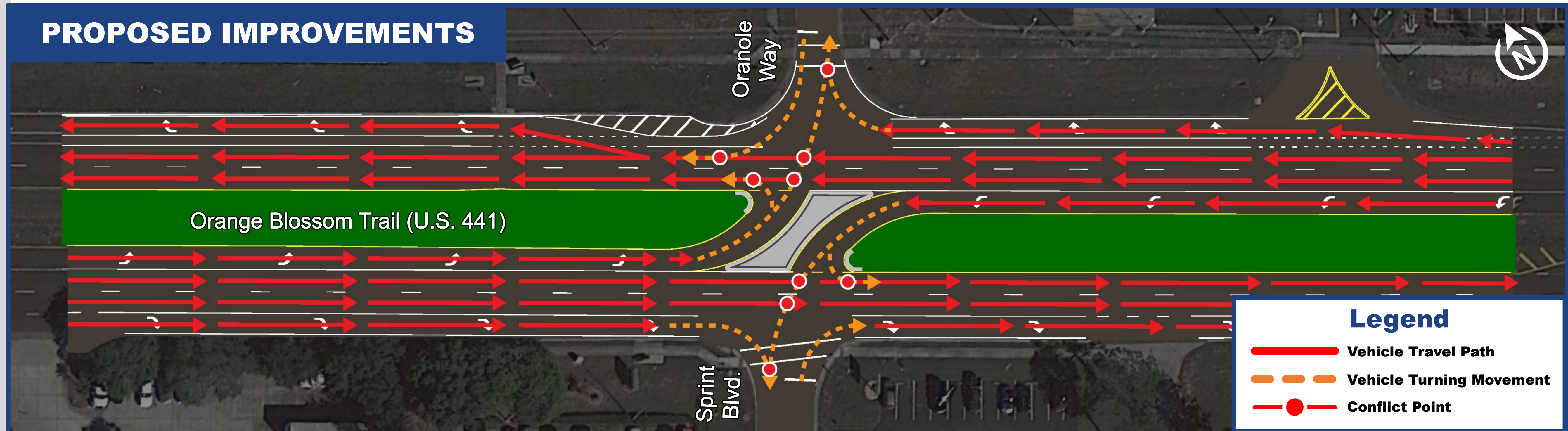
Currently, there is a full median opening at the intersection of Orange Blossom Trail (U.S. 441) and Oranole Way/Sprint Boulevard. Drivers staged in the median intending to turn eastbound or westbound cannot clearly see approaching northbound or southbound vehicles on Orange Blossom Trail. While waiting to turn, drivers can block the inside through lane of Orange Blossom Trail. Eastbound and westbound left-turning drivers can block the sightline for northbound or southbound left-turning drivers waiting in the median opening.

The proposed improvements aim to reduce these points of conflict and obstruction.

## EXISTING CONFLICT POINTS



## PROPOSED IMPROVEMENTS



Download this exhibit on the project website  
[www.CFLRoads.com/project/992100-2](http://www.CFLRoads.com/project/992100-2)

Orange County, Florida  
Financial Project Identification (FPID) No. 992100-2

