

Orange Avenue

CORRIDOR PLANNING STUDY | PINELOCH AVE. TO ANDERSON ST.

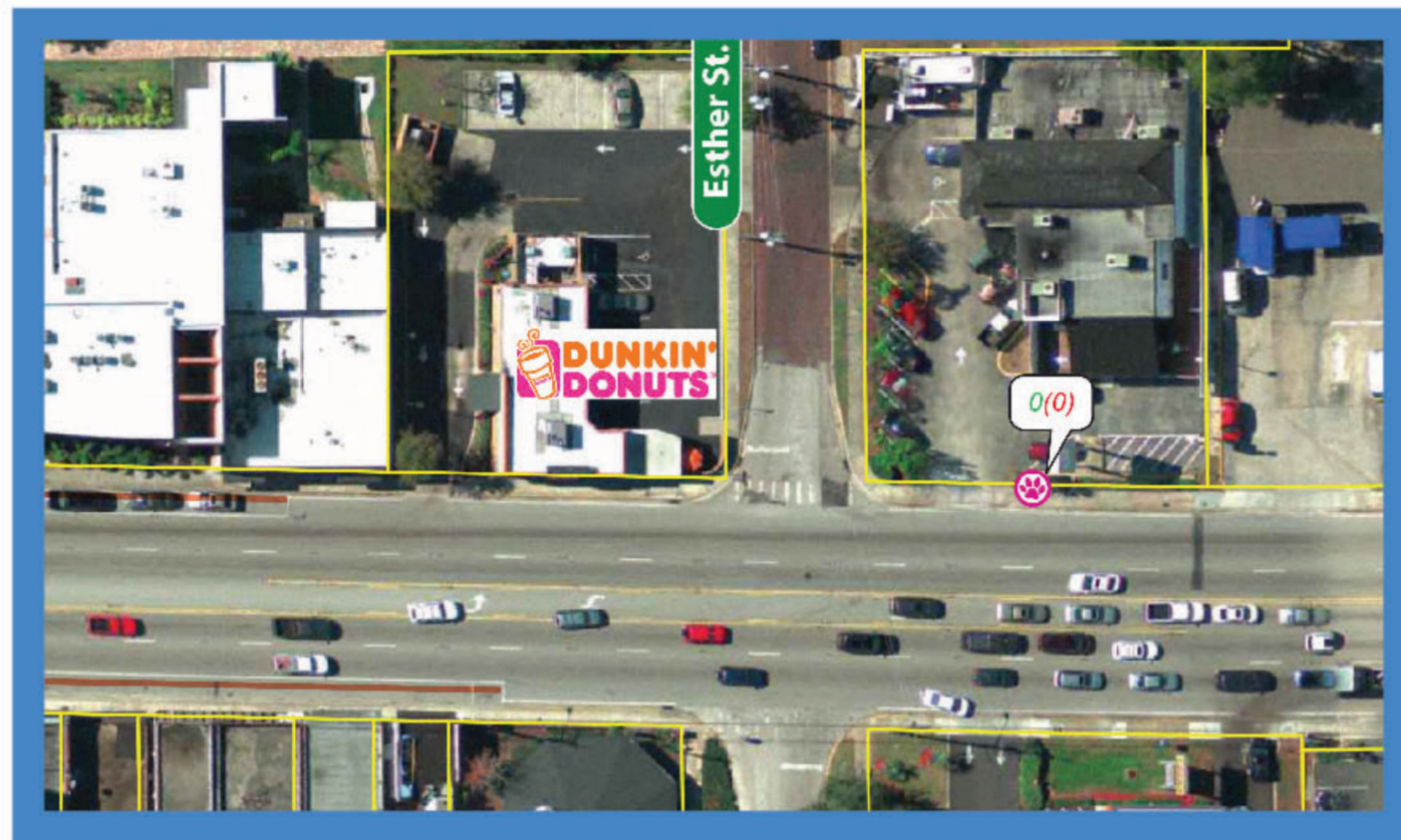


STUDY AREA ISSUES

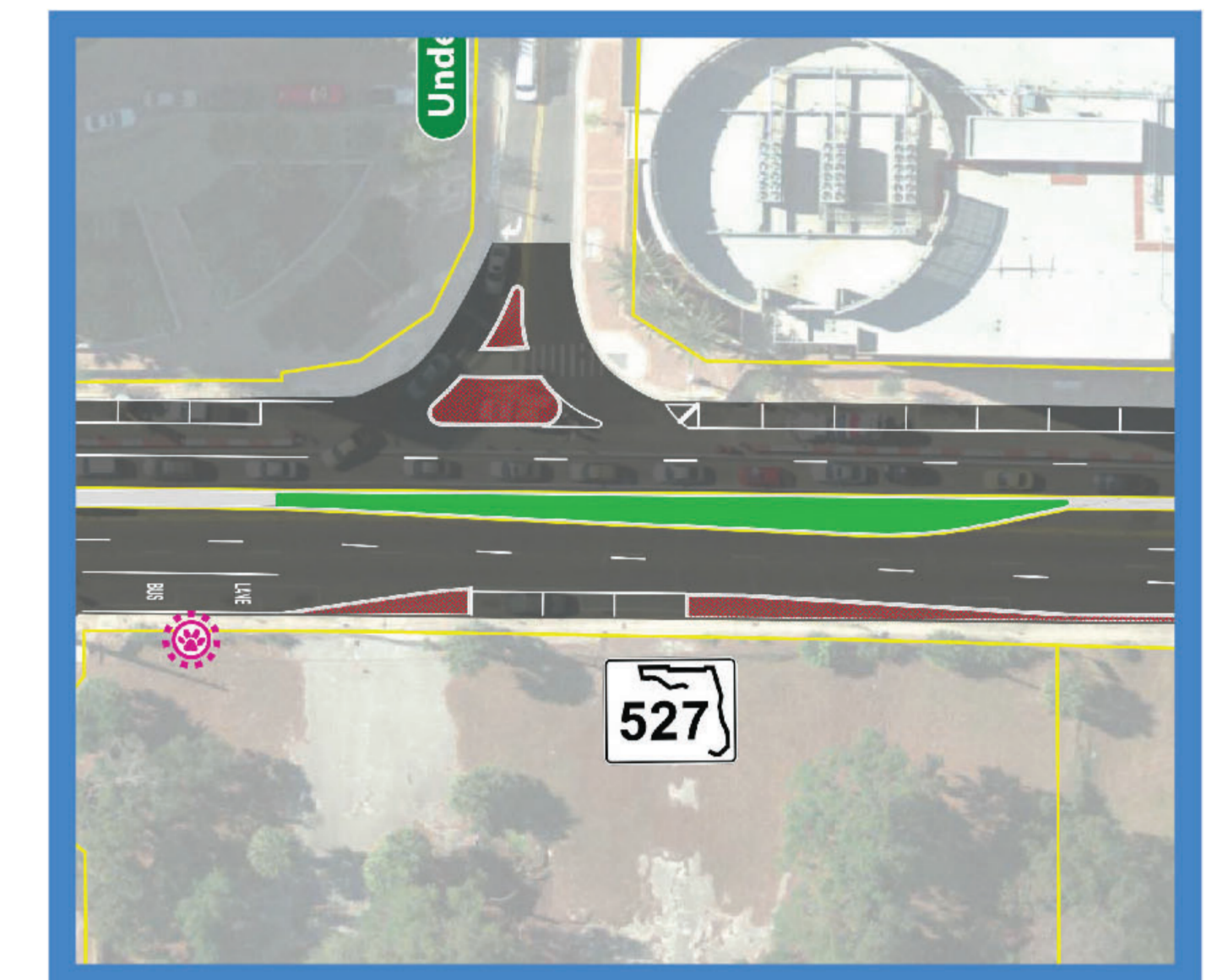
GOALS & OBJECTIVES

Safety:

High number of crashes and bi-directional turn lane conflicts. Sight distance issues at select driveways.



- 1 Reduction in number of crashes
- 2 Lower design speed
- 3 Implement access management where reasonable to eliminate bi-directional turns
- 4 Provide medians where possible
- 5 Improve sight distance

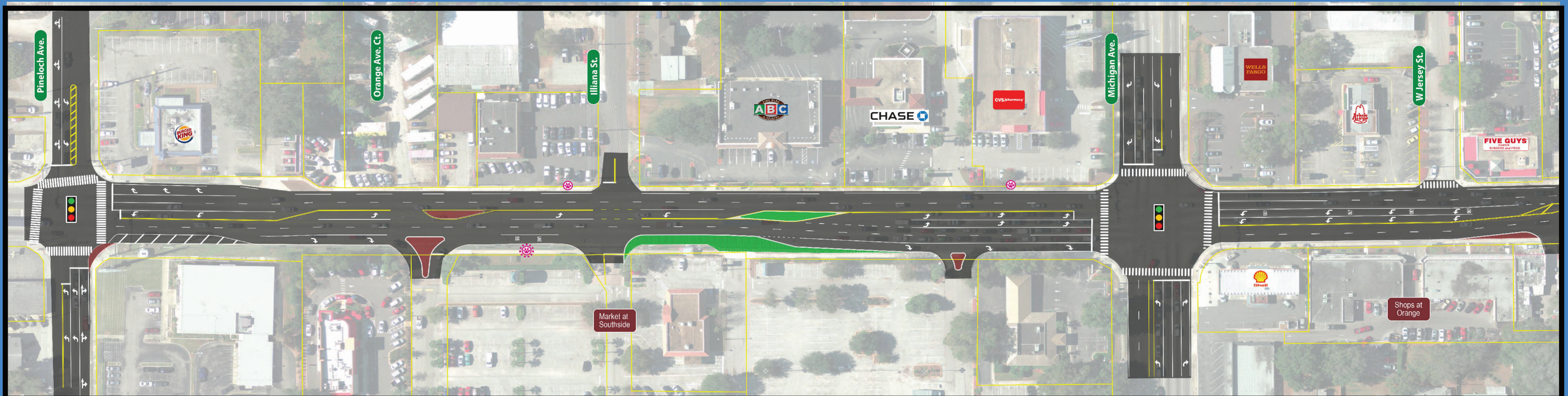


Pedestrian Mobility:

Frequent mid-block crossings between bus stops. Three fatalities involved peds/cyclists.



- 1 Reduction in mid block crossings
- 2 Shorter intersection crossing distances
- 3 Increased space between sidewalk and travel lane



Consistency:

Speed changes from 40 - 35 - 30 mph, inconsistent lane widths, medians, and a lack of "look" or "brand" of the corridor.



- 1 Consistency in posted speeds
- 2 Provide consistent lane widths that support lower speeds
- 3 Implement more greenscape/hardscape where possible

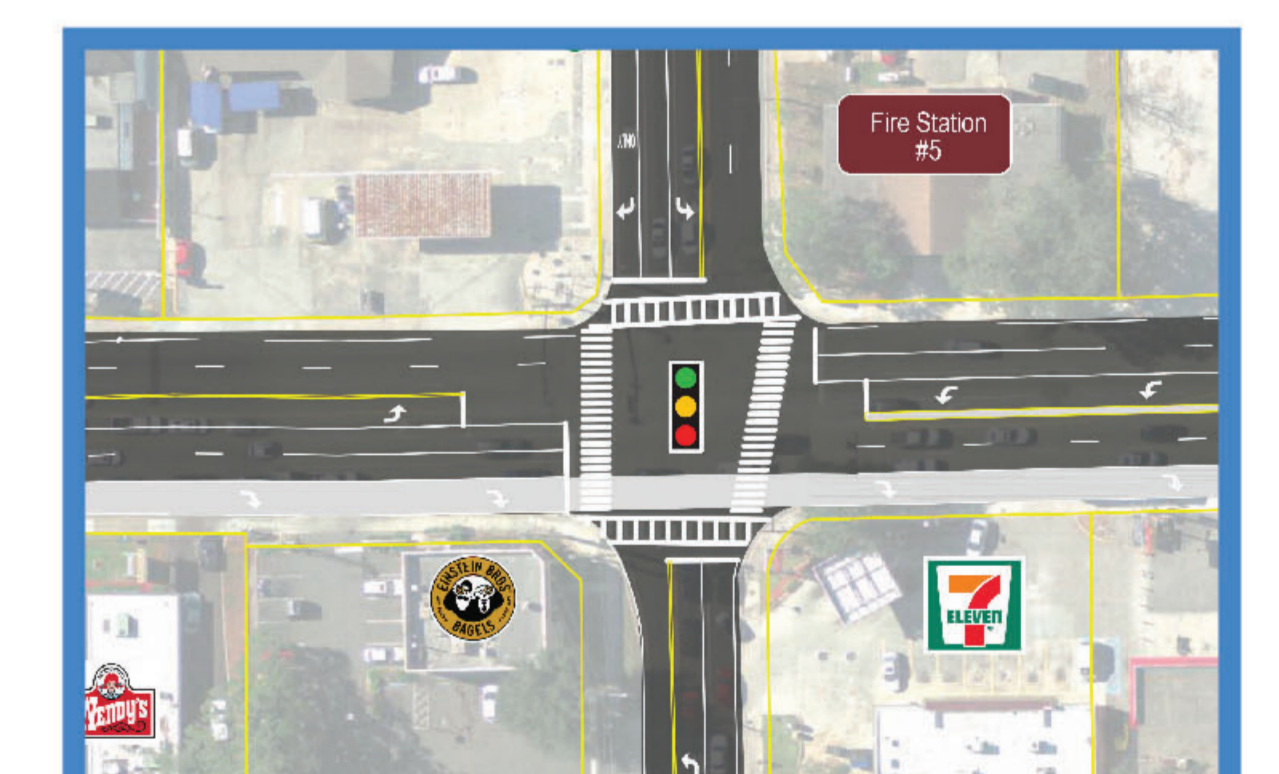


Traffic Congestion:

Long delays at high volume intersections



- 1 Reduce delay at intersections where possible
- 2 Implement intersection geometry improvements like right or left turn lanes where possible



Transit:

Highly used corridor w/ frequent headway times and stop locations. Transit operations currently block traffic operations and many stops have no shelter



- 1 Consolidate underutilized stop locations
- 2 Remove transit operations from thru traffic lanes when possible
- 3 Provide bus shelters
- 4 Provide Flex Lanes where applicable

